

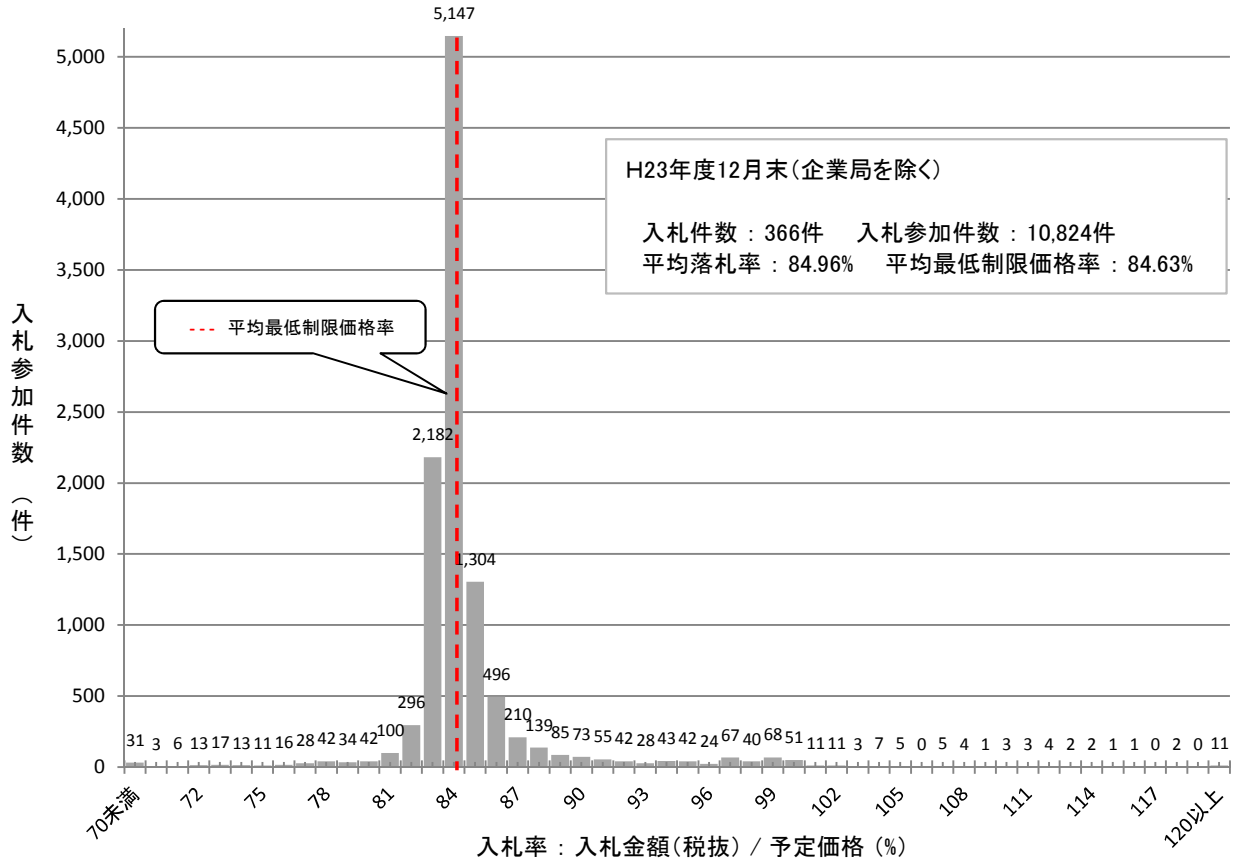
工事における入札金額の分布(企業局を除く)

単位:件、%

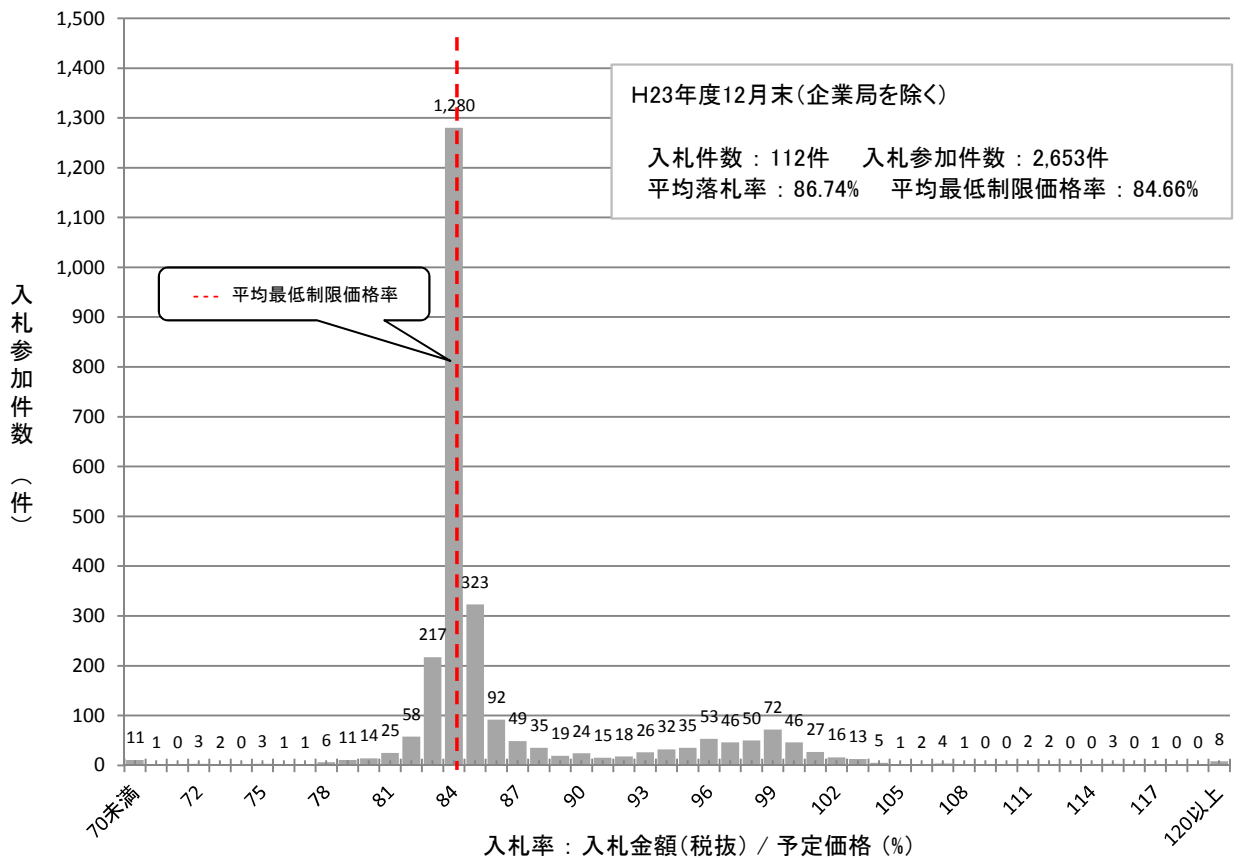
入札率(%)	工種	土木		下水道		舗装		造園		建築		電気		管		その他	
		入札参加 件数	構成比	入札参加 件数	構成比	入札参加 件数	構成比	入札参加 件数	構成比	入札参加 件数	構成比	入札参加 件数	構成比	入札参加 件数	構成比	入札参加 件数	構成比
70	未満	31	0.29%	11	0.41%	4	0.18%	4	0.37%	91	3.53%	29	2.06%	34	3.07%	6	2.01%
70	以上	71	0.03%	1	0.04%	2	0.09%	0	0.00%	15	0.58%	5	0.36%	4	0.36%	0	0.00%
71		72	0.06%	0	0.00%	2	0.09%	0	0.00%	18	0.70%	2	0.14%	5	0.45%	1	0.34%
72		73	0.12%	3	0.11%	0	0.00%	2	0.18%	18	0.70%	1	0.07%	12	1.08%	1	0.34%
73		74	0.16%	2	0.08%	1	0.04%	2	0.18%	20	0.78%	6	0.43%	8	0.72%	0	0.00%
74		75	0.12%	0	0.00%	3	0.13%	1	0.09%	24	0.93%	4	0.28%	5	0.45%	2	0.67%
75		76	0.10%	3	0.11%	5	0.22%	2	0.18%	29	1.12%	5	0.36%	14	1.26%	3	1.01%
76		77	0.15%	1	0.04%	4	0.18%	4	0.37%	26	1.01%	7	0.50%	3	0.27%	3	1.01%
77		78	0.26%	1	0.04%	5	0.22%	0	0.00%	38	1.47%	15	1.07%	10	0.90%	4	1.34%
78		79	0.39%	6	0.23%	26	1.14%	6	0.55%	43	1.67%	11	0.78%	12	1.08%	1	0.34%
79		80	0.31%	11	0.41%	7	0.31%	8	0.73%	52	2.02%	8	0.57%	14	1.26%	6	2.01%
80		81	0.39%	14	0.53%	20	0.88%	13	1.19%	50	1.94%	19	1.35%	17	1.53%	7	2.35%
81		82	0.92%	25	0.94%	13	0.57%	17	1.56%	58	2.25%	17	1.21%	22	1.98%	8	2.68%
82		83	2.73%	58	2.19%	39	1.72%	29	2.66%	66	2.56%	19	1.35%	25	2.25%	8	2.68%
83		84	20.16%	217	8.18%	545	24.00%	73	6.68%	77	2.99%	34	2.42%	33	2.98%	11	3.69%
84		85	47.55%	1,280	48.25%	929	40.91%	198	18.13%	91	3.53%	48	3.42%	51	4.60%	11	3.69%
85		86	12.05%	323	12.17%	367	16.16%	305	27.93%	88	3.41%	58	4.13%	54	4.87%	10	3.36%
86		87	4.58%	92	3.47%	75	3.30%	124	11.36%	107	4.15%	83	5.91%	75	6.76%	23	7.72%
87		88	1.94%	49	1.85%	39	1.72%	82	7.51%	191	7.41%	64	4.56%	71	6.40%	34	11.41%
88		89	1.28%	35	1.32%	19	0.84%	48	4.40%	133	5.16%	25	17.86%	83	7.48%	21	7.05%
89		90	0.79%	19	0.72%	12	0.53%	28	2.56%	143	5.55%	90	6.41%	73	6.58%	14	4.70%
90		91	0.67%	24	0.90%	13	0.57%	23	2.11%	87	3.37%	67	4.77%	53	4.78%	6	2.01%
91		92	0.51%	15	0.57%	3	0.13%	22	2.01%	91	3.53%	56	3.99%	45	4.06%	10	3.36%
92		93	0.39%	18	0.68%	12	0.53%	13	1.19%	88	3.41%	42	2.99%	36	3.25%	14	4.70%
93		94	0.26%	26	0.98%	7	0.31%	14	1.28%	102	3.96%	38	2.70%	35	3.16%	4	1.34%
94		95	0.40%	32	1.21%	10	0.44%	11	1.01%	87	3.37%	41	2.92%	26	2.34%	8	2.68%
95		96	0.39%	35	1.32%	18	0.79%	4	0.37%	72	2.79%	42	2.99%	29	2.61%	5	1.68%
96		97	0.22%	53	2.00%	10	0.44%	5	0.46%	53	2.06%	35	2.49%	23	2.07%	8	2.68%
97		98	0.62%	46	1.73%	4	0.18%	11	1.01%	49	1.90%	28	1.99%	27	2.43%	10	3.36%
98		99	0.37%	50	1.88%	6	0.26%	7	0.64%	43	1.67%	34	2.42%	24	2.16%	8	2.68%
99		100	0.63%	72	2.71%	18	0.79%	7	0.64%	39	1.51%	26	1.85%	15	1.35%	7	2.35%
100		101	0.47%	46	1.73%	27	1.19%	2	0.18%	36	1.40%	24	1.71%	14	1.26%	5	1.68%
101		102	0.10%	27	1.02%	9	0.40%	8	0.73%	40	1.55%	13	0.93%	21	1.89%	2	0.67%
102		103	0.10%	16	0.60%	4	0.18%	4	0.37%	37	1.44%	21	1.49%	14	1.26%	5	1.68%
103		104	0.03%	13	0.49%	4	0.18%	3	0.27%	32	1.24%	21	1.49%	11	0.99%	2	0.67%
104		105	0.06%	5	0.19%	0	0.00%	0	0.00%	24	0.93%	15	1.07%	7	0.63%	1	0.34%
105		106	0.05%	1	0.04%	1	0.04%	1	0.09%	25	0.97%	5	0.36%	11	0.99%	2	0.67%
106		107	0.00%	2	0.08%	0	0.00%	2	0.18%	30	1.16%	11	0.78%	15	1.35%	4	1.34%
107		108	0.05%	4	0.15%	1	0.04%	1	0.09%	20	0.78%	14	1.00%	7	0.63%	1	0.34%
108		109	0.04%	1	0.04%	0	0.00%	0	0.00%	17	0.66%	2	0.14%	6	0.54%	4	1.34%
109		110	0.01%	0	0.00%	0	0.00%	2	0.18%	18	0.70%	11	0.78%	12	1.08%	5	1.68%
110		111	0.03%	0	0.00%	0	0.00%	2	0.18%	17	0.66%	9	0.64%	6	0.54%	0	0.00%
111		112	0.03%	2	0.08%	0	0.00%	0	0.00%	14	0.54%	9	0.64%	3	0.27%	2	0.67%
112		113	0.04%	2	0.08%	2	0.09%	1	0.09%	12	0.47%	6	0.43%	2	0.18%	2	0.67%
113		114	0.02%	0	0.00%	1	0.04%	1	0.09%	9	0.35%	10	0.71%	5	0.45%	0	0.00%
114		115	0.02%	0	0.00%	0	0.00%	0	0.00%	8	0.31%	3	0.21%	1	0.09%	0	0.00%
115		116	0.01%	3	0.11%	0	0.00%	0	0.00%	13	0.50%	8	0.57%	2	0.18%	2	0.67%
116		117	0.01%	0	0.00%	0	0.00%	0	0.00%	11	0.43%	3	0.21%	5	0.45%	1	0.34%
117		118	0.00%	1	0.04%	0	0.00%	0	0.00%	9	0.35%	0	0.00%	3	0.27%	0	0.00%
118		119	0.02%	0	0.00%	0	0.00%	0	0.00%	7	0.27%	4	0.28%	0	0.00%	1	0.34%
119		120	0.00%	0	0.00%	1	0.04%	0	0.00%	7	0.27%	5	0.36%	3	0.27%	1	0.34%
120			0.10%	8	0.30%	3	0.13%	2	0.18%	103	4.00%	26	1.85%	23	2.07%	4	1.34%
計		10,824	-	2,653	-	2,271	-	1,092	-	2,578	-	1,405	-	1,109	-	298	-

- ※1 入札率=入札金額(税抜)/予定価格(税抜)
- ※2 構成比は、各工種における件数計に占める割合を示す。
- ※3 12月末までに開札した案件で集計(ただし総合評価等の未確定案件を除く)。
- ※4 随意契約を除く。
- ※5 表中の網掛は、各工種において最も件数が多かった入札率を示す。

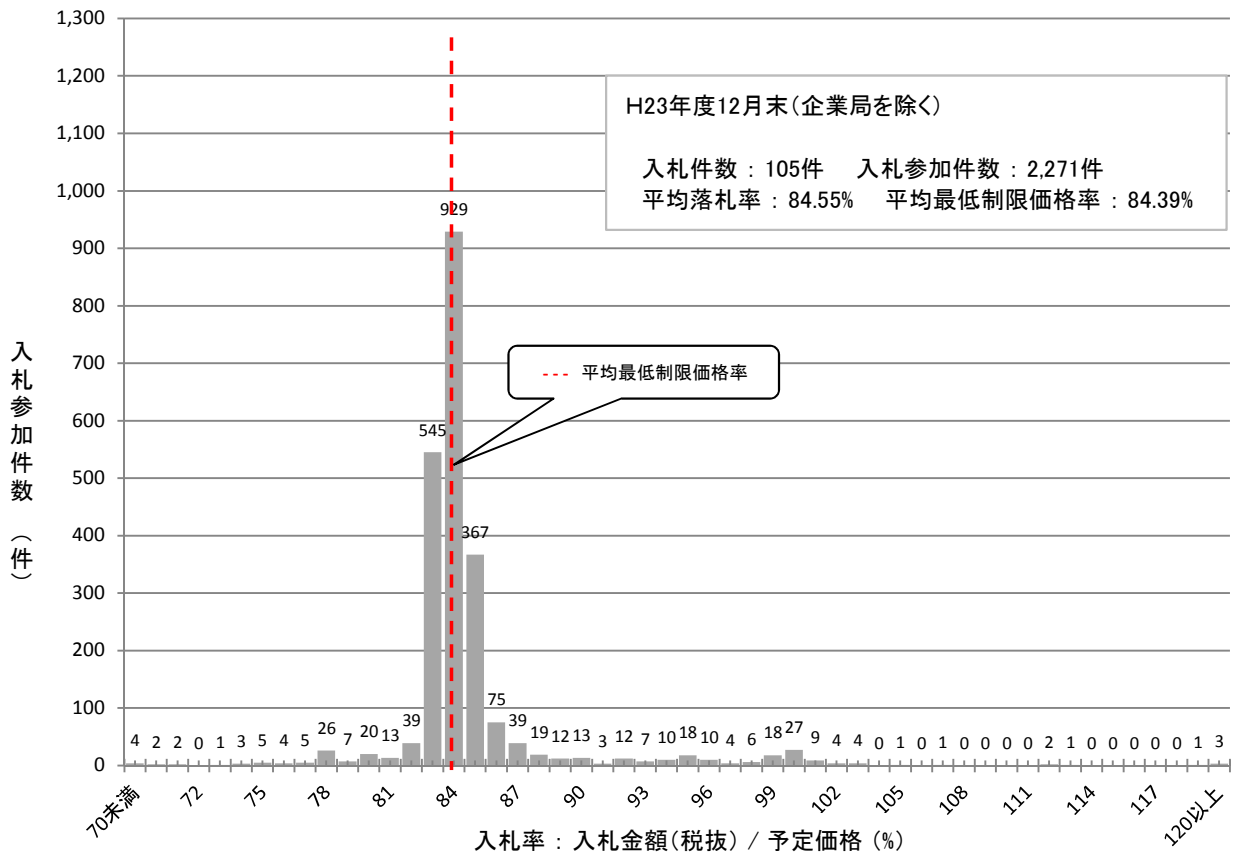
### 入札金額の分布(土木)



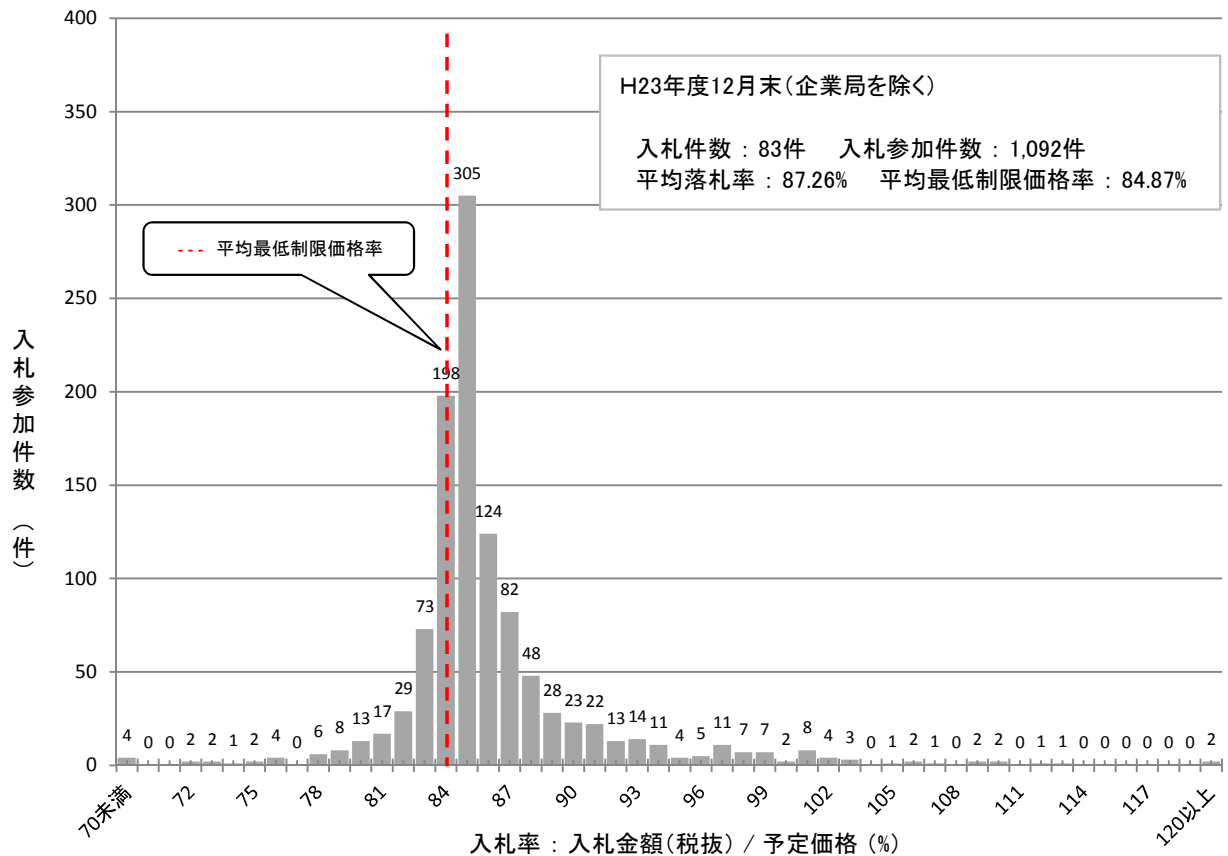
### 入札金額の分布(下水道)



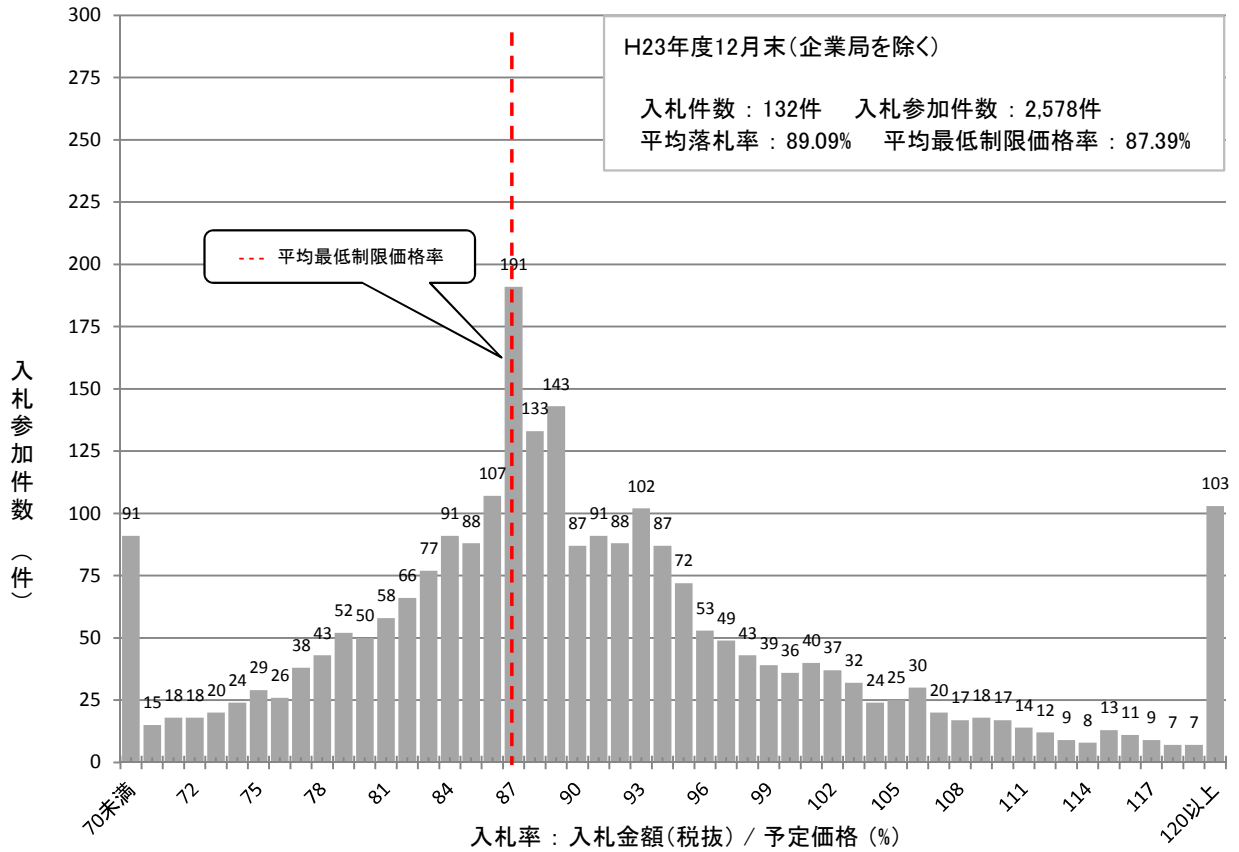
### 入札金額の分布(舗装)



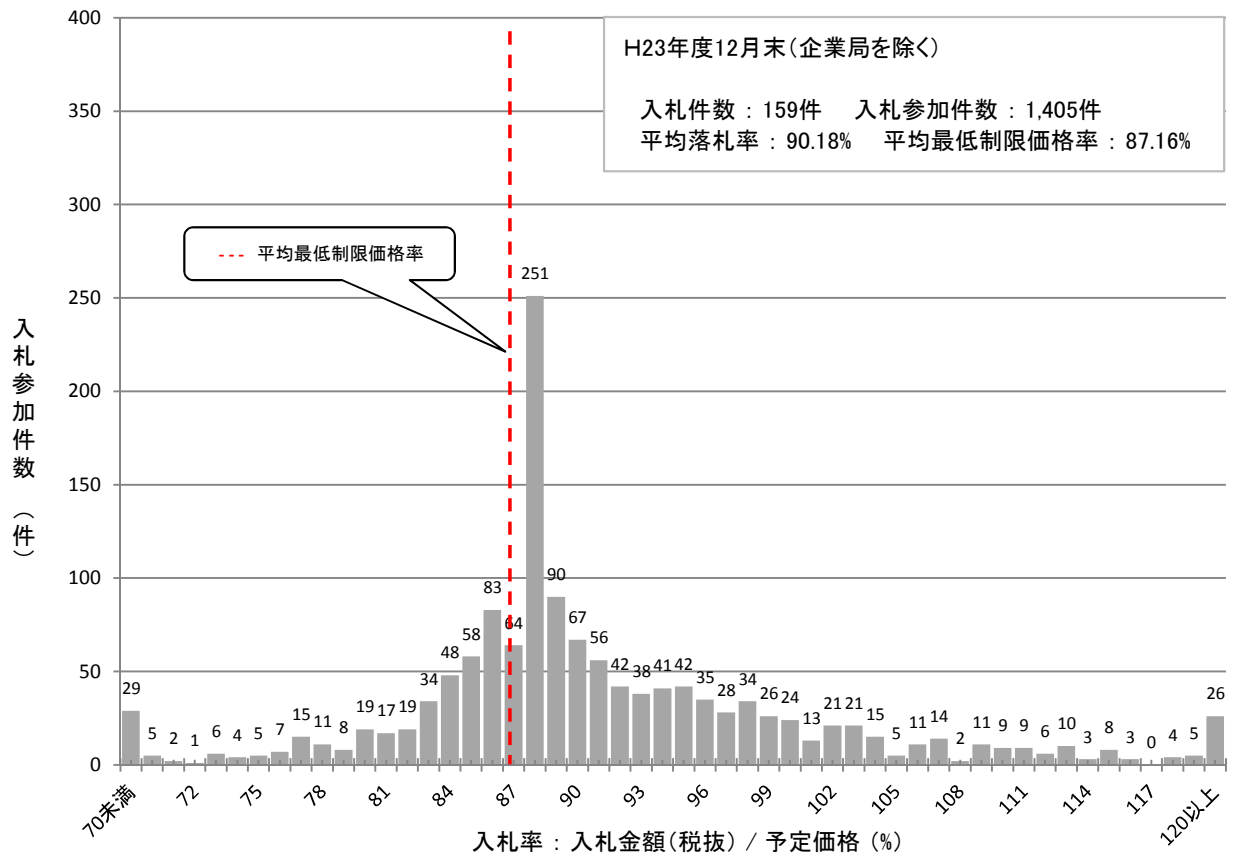
### 入札金額の分布(造園)



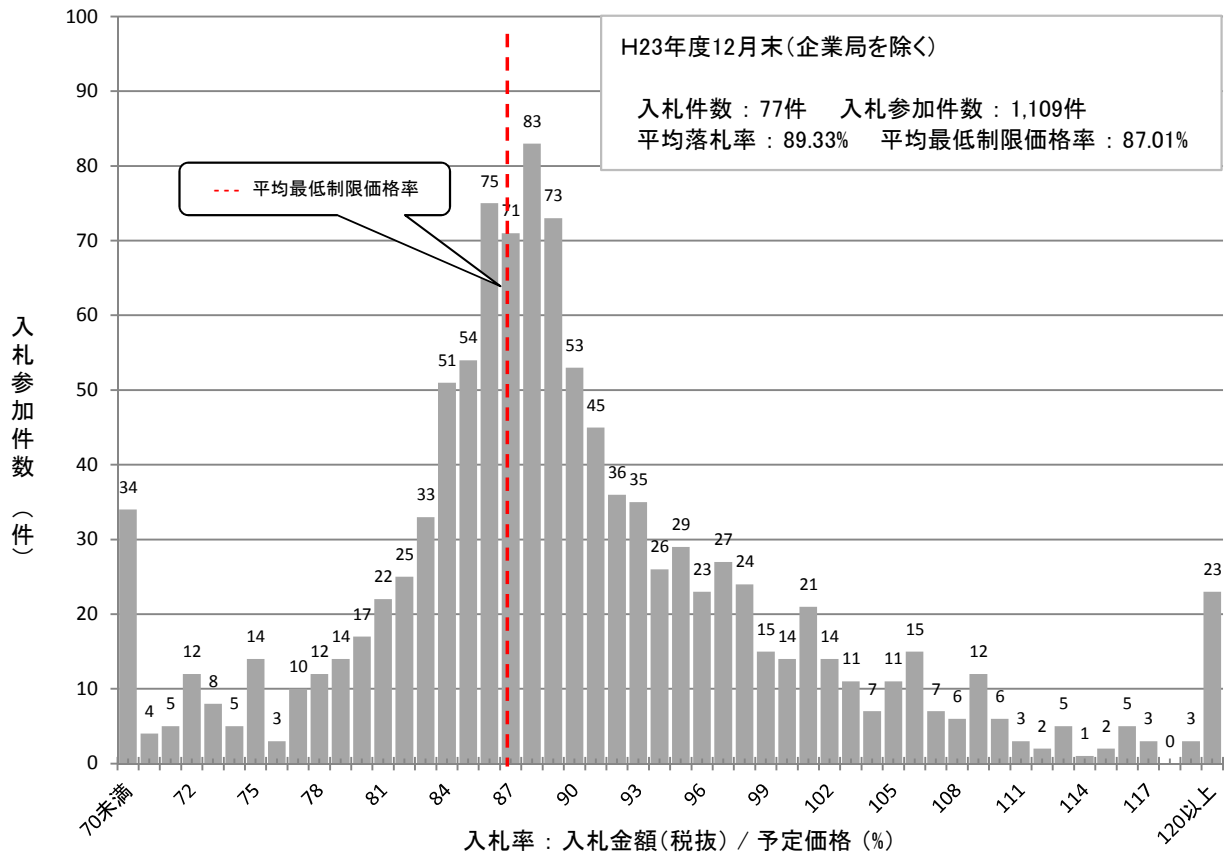
## 入札金額の分布(建築)



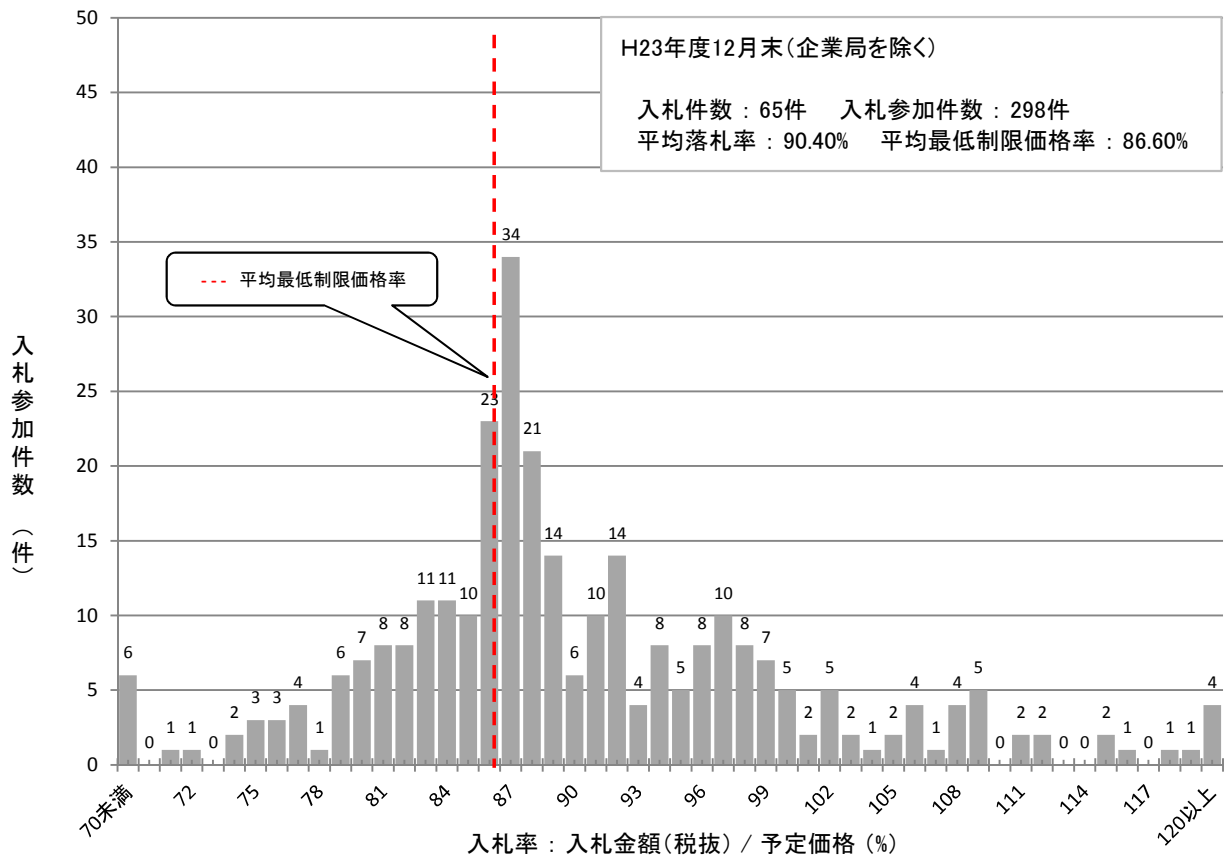
## 入札金額の分布(電気)



## 入札金額の分布(管)



## 入札金額の分布(その他)



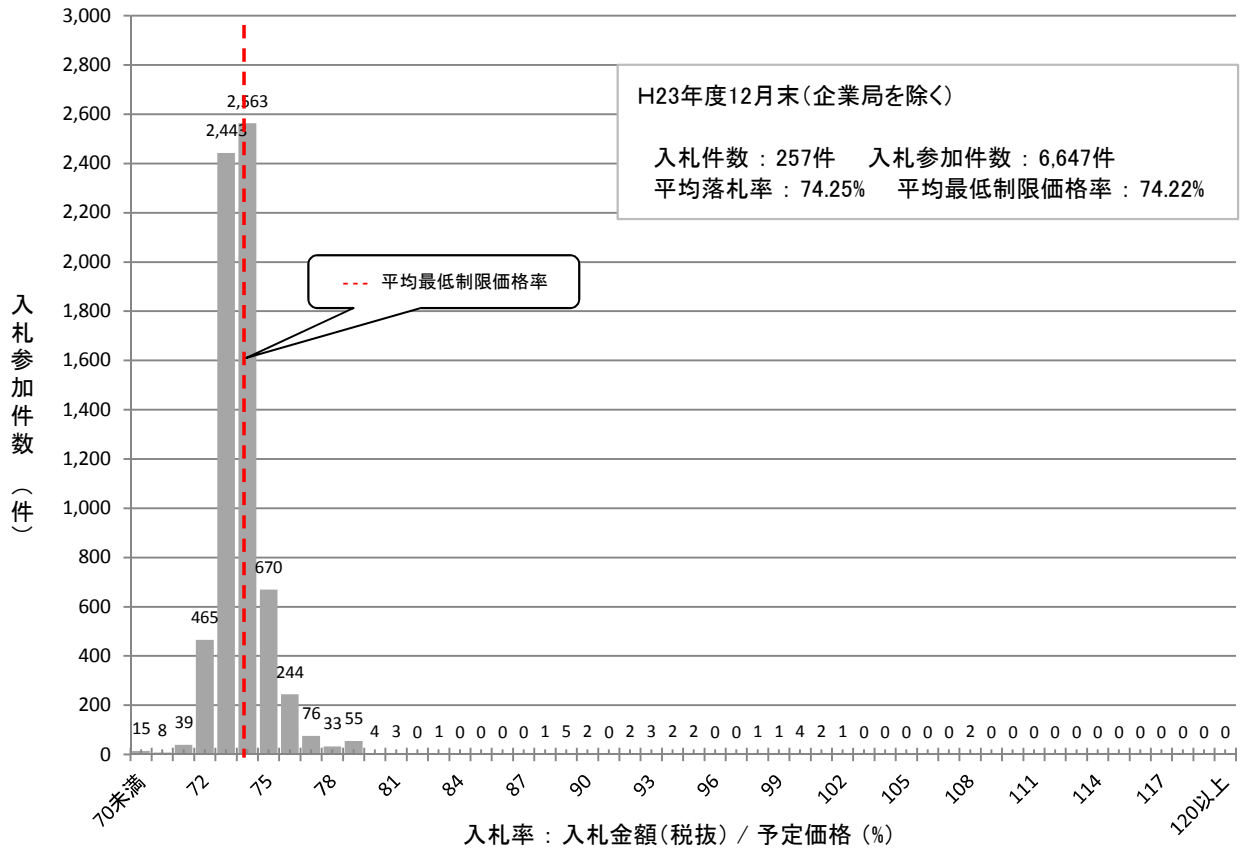
## 業務における入札金額の分布(企業局を除く)

単位:件、%

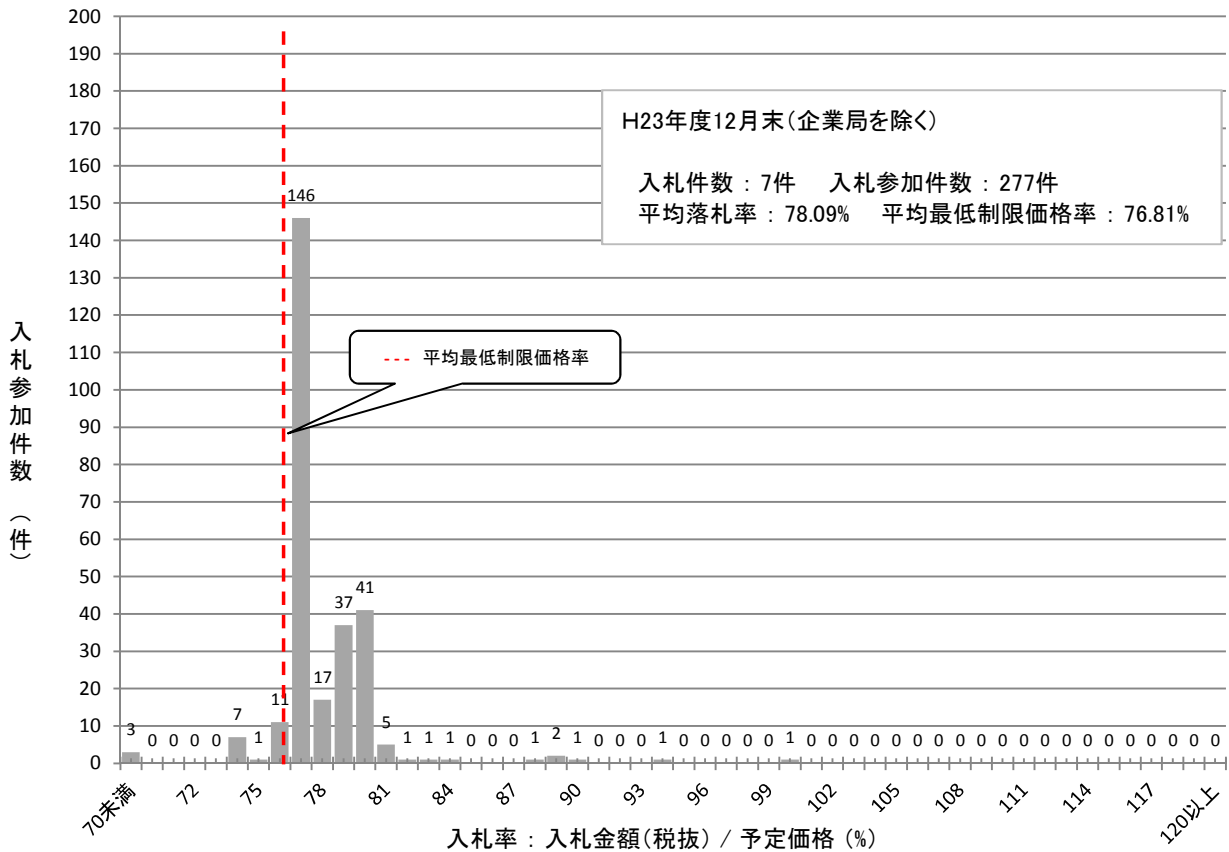
業種 入札率(%)	測量		地質調査		設計	
	入札参加 件数	構成比	入札参加 件数	構成比	入札参加 件数	構成比
70 未満	15	0.23%	3	1.08%	117	2.65%
70 以上 71 "	8	0.12%	0	0.00%	33	0.75%
71 " 72 "	39	0.59%	0	0.00%	90	2.04%
72 " 73 "	465	7.00%	0	0.00%	177	4.01%
73 " 74 "	2,443	36.75%	0	0.00%	326	7.38%
74 " 75 "	2,563	38.56%	7	2.53%	941	21.31%
75 " 76 "	670	10.08%	1	0.36%	1,586	35.91%
76 " 77 "	244	3.67%	11	3.97%	229	5.19%
77 " 78 "	76	1.14%	146	52.71%	112	2.54%
78 " 79 "	33	0.50%	17	6.14%	79	1.79%
79 " 80 "	55	0.83%	37	13.36%	148	3.35%
80 " 81 "	4	0.06%	41	14.80%	134	3.03%
81 " 82 "	3	0.05%	5	1.81%	59	1.34%
82 " 83 "	0	0.00%	1	0.36%	34	0.77%
83 " 84 "	1	0.02%	1	0.36%	19	0.43%
84 " 85 "	0	0.00%	1	0.36%	20	0.45%
85 " 86 "	0	0.00%	0	0.00%	32	0.72%
86 " 87 "	0	0.00%	0	0.00%	18	0.41%
87 " 88 "	0	0.00%	0	0.00%	18	0.41%
88 " 89 "	1	0.02%	1	0.36%	11	0.25%
89 " 90 "	5	0.08%	2	0.72%	16	0.36%
90 " 91 "	2	0.03%	1	0.36%	14	0.32%
91 " 92 "	0	0.00%	0	0.00%	9	0.20%
92 " 93 "	2	0.03%	0	0.00%	16	0.36%
93 " 94 "	3	0.05%	0	0.00%	13	0.29%
94 " 95 "	2	0.03%	1	0.36%	13	0.29%
95 " 96 "	2	0.03%	0	0.00%	11	0.25%
96 " 97 "	0	0.00%	0	0.00%	10	0.23%
97 " 98 "	0	0.00%	0	0.00%	6	0.14%
98 " 99 "	1	0.02%	0	0.00%	11	0.25%
99 " 100 "	1	0.02%	0	0.00%	36	0.82%
100 " 101 "	4	0.06%	1	0.36%	38	0.86%
101 " 102 "	2	0.03%	0	0.00%	13	0.29%
102 " 103 "	1	0.02%	0	0.00%	4	0.09%
103 " 104 "	0	0.00%	0	0.00%	6	0.14%
104 " 105 "	0	0.00%	0	0.00%	3	0.07%
105 " 106 "	0	0.00%	0	0.00%	1	0.02%
106 " 107 "	0	0.00%	0	0.00%	2	0.05%
107 " 108 "	0	0.00%	0	0.00%	0	0.00%
108 " 109 "	2	0.03%	0	0.00%	1	0.02%
109 " 110 "	0	0.00%	0	0.00%	1	0.02%
110 " 111 "	0	0.00%	0	0.00%	0	0.00%
111 " 112 "	0	0.00%	0	0.00%	0	0.00%
112 " 113 "	0	0.00%	0	0.00%	0	0.00%
113 " 114 "	0	0.00%	0	0.00%	0	0.00%
114 " 115 "	0	0.00%	0	0.00%	1	0.02%
115 " 116 "	0	0.00%	0	0.00%	2	0.05%
116 " 117 "	0	0.00%	0	0.00%	0	0.00%
117 " 118 "	0	0.00%	0	0.00%	0	0.00%
118 " 119 "	0	0.00%	0	0.00%	1	0.02%
119 " 120 "	0	0.00%	0	0.00%	0	0.00%
120 "	0	0.00%	0	0.00%	5	0.11%
計	6,647	-	277	-	4,416	-

- ※1 入札率=入札金額(税抜)/予定価格(税抜)
- ※2 構成比は、各業種における件数計に占める割合を示す。
- ※3 12月末までに開札した案件で集計(ただし総合評価等の未確定案件を除く)。
- ※4 随意契約を除く。
- ※5 表中の網掛は、各業種において最も件数が多かった入札率を示す。

### 入札金額の分布(測量)



### 入札金額の分布(地質調査)



## 入札金額の分布(設計)

