

Highlights of this Facility♪

Figures written in parentheses () indicate approximate times required.

① Let's Look at the Exhibition Hall♪ (20-30 mins)

Approximately 300 traditional articles made by the Ainu people of Sapporo are on display. Not only can you look at them, but you can also touch them!

Exhibition Hall does require a fee



② Experience Corner♪ (30 mins)

Try embroidery, wood carving, knitting, and other traditional Ainu crafts. You can also try Ainu garments at the photo corner. Please be careful as available hours are fixed (same-day reservations system). For details, please visit the website.

Free participation

We recommend visiting the Experience Corner when you arrive or making a reservation.



③ Let's Look at the Outdoor Exhibition♪ (20-30 mins)

A recreation of a Kotan (village) where the Ainu people used to live! The atmosphere changes with the four seasons!



④ Let's Participate in an Event♪ (60 mins)

Events are held regularly in the Cultural Exchange Hall! In addition to viewing traditional Ainu dance, visitors of all ages can experience children's games and more! Visit the home page for details.



There's still so much more! Take a look through the leaflet♪

Available Hours

Open 8:45~22:00
Indoor Exhibition & Outdoor Exhibition 9:00~17:00
Closed Monday, National holidays, The last Tuesday of the month, Year-end and New Year holidays (12/29-1/3)

Exhibition Hall Fee

General ¥350 (¥300) High school/College Students ¥150
Prices written in parentheses () are for groups of over 20 members
※Middle school students and younger, adults over 65, and those with a disability are free.

Main Access Methods



By car
Route 230 Approx. 40 mins.

By bus
Jotetsu Bus Approx. 60 mins.
(Buses bound for Jozekei Hot Springs/Hoheikyo Hot Springs)

(Reservations only) Kappa Liner Approx. 50 mins.

By Bus & Subway
Namboku Subway Line (Bound for Makomanai)
Approx. 20 mins.

By JR
JR Rapid Airport Approx. 40 mins.
※Go to Sapporo Station and use one of the routes listed above.

By car
Approx. 75 minutes by car
(Hokkaido Expressway Kitahiroshima IC-Route 230※1)
※1 There is also a route from Eniwa via Hokkaido Prefectural Road 117 (mountain road).

By Bus
Jotetsu Bus (Bound for Jozekei Hot Springs)
Approx. 40 mins.

By Car From New Chitose Airport
Approx. 75 minutes by car

Sapporo Station

Makomanai Station

New Chitose Airport

Sapporo Ainu Culture Promotion Center (Sapporo Pirka Kotan)

Walk 6 mins.

※Required times are a rough estimate for summer. Times may take longer due to winter weather conditions. ※For details on fares, timetables, etc., please check with the transportation companies. ※Free parking (Capacity: 40 cars, 6 buses)

Sapporo Ainu Culture Promotion Center Sapporo Pirka Kotan

27 Koganeyu, Minami-ku, Sapporo, Hokkaido
TEL : (011) 596-5961
E-mail : pirka-kotan@city.sapporo.jp
HP : Search "Sapporo Pirka Kotan"

Sapporo Pirka Kotan Search



さっぽろ市
02-D03-25-221
R7-2-158

Sapporo Ainu Culture Promotion Center

Sapporo Pirka Kotan



SAPPORO

Visitors can see, touch, and experience numerous traditional articles created by the Ainu people of Sapporo on site.

Visitors can enjoy learning about the culture and history of the Ainu people, who first settled in Hokkaido and other lands and developed their own unique culture!



① Exhibition Hall

- Approximately 300 traditional Ainu articles
- Table theater that introduces Ainu culture
- Exhibit explanation video
- Ainu language quiz



② Experience Corner

- Embroidery, wood carving, and knitting
- Garment try-on (Commemorative Photo Corner)



③ Outdoor Exhibition

【History Village】

- Cise (a traditional Ainu house)
- Heperset (bear cub weaving)

【Itaomacip】

- 15m long plank-built boat

【Nature Village】

- Iyutap (rice milling device)
- To (pond)
- Plants associated with the Ainu



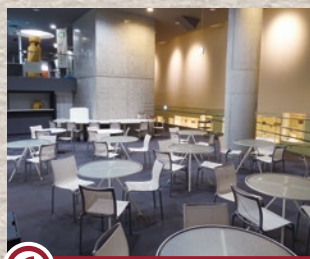
④ Event Venue (Cultural exchange Hall)

An exchange hall that accommodates approximately 200 people and hosts various events and hands-on learning programs for elementary school students or school field trips.



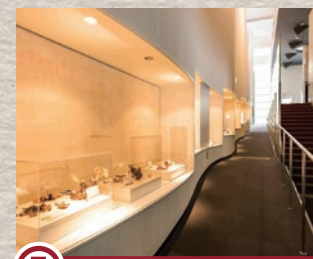
⑤ Courtyard

Easy-to-see display of plants related to the Ainu



⑥ Rest Corner

A leisurely place to rest. There are also books and videos about Ainu culture!



⑦ Street Gallery

A gallery that invokes a gently flowing river. Traditional articles are also on display here.

⑧ Ior Forest Symbol Garden

The Sapporo Ainu Association is working on restoring a traditional Ainu living space (Ior) and planting Ainu-related plants in a near-natural environment.



Museum exhibition guide
Pocket Curator
Smartphone app

The exhibit contents of this facility can also be viewed on this smartphone app.

Japanese, English, Chinese (simplified), and Korean are also available. Wi-Fi is also available in the facility.

Download the app here!



【App Store】



【Google Play】