

# SAPPORO STYLE CATALOGUE



Industry Promotion Department, Economic & Tourism Affairs Bureau,  
City of Sapporo

Kita 1-jo Nishi 2-chome, Chuo-ku, Sapporo 060-8611, Japan TEL 011-211-2392  
sapporo-style@city.sapporo.jp

<https://www.city.sapporo.jp/keizai/sapporo-style/index.html>

sapporostyle



\*All sizes are in centimeters.

\*The information is current as of January 1, 2023. Prices and designs may change without notice.

SAPPORO



さっぽろ市  
01-H01-23-97  
R5-1-38

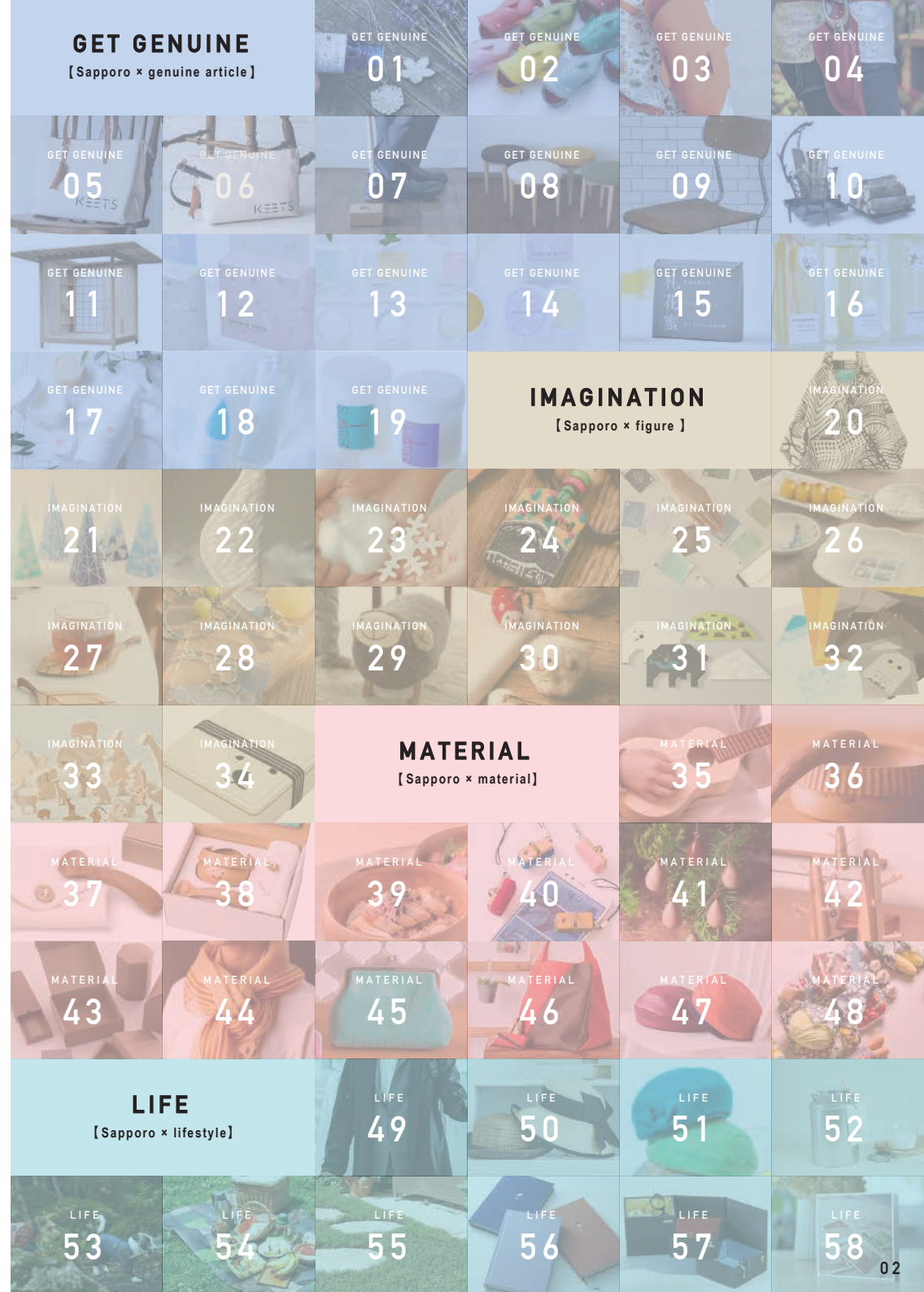


Sapporo creates the next age.  
The city is filled with “something good,”  
namely, a free spirit and creativity to explore  
and clear the untrodden way to the future.

People living in Hokkaido are known for their open-mindedness.  
This quality is strongly connected to Hokkaido’s history up to the present.  
In Hokkaido, personal exchanges involving the crossing of  
oceans have continued for a long time. In the Meiji era,  
it was foreigners who introduced advanced urban development concepts.  
Sapporo Style is a brand lining up “something good” nurtured  
by the free spirit unique to Sapporo, a city with a rich history fueled  
by generously absorbing different cultures and new things.

### What is Sapporo like?

Sapporo, located in Hokkaido in northern Japan,  
is a large city with a population of about 1.95  
million people. Urban features and nature  
coexist in Sapporo, which includes virgin forests  
and other lush green areas, while  
salmon-spawning rivers flow through its central  
area. Since manufacturers, design firms,  
distribution companies and other business  
entities are concentrated in a compact area,  
these specialists in their own fields have  
opportunities to interact and sometimes jointly  
create something new. The four distinct seasons  
form another attraction of Sapporo – the only  
city in the world where some 1.95 million people  
live in an area where the total annual snowfall  
exceeds a depth of six meters.





# GET GENUINE

【Sapporo × genuine article】

Distinct personalities abound in Sapporo, a city with a large population of 1.97 million, including many who have moved from elsewhere in Hokkaido and Japan. The people who live here are working hard day by day to offer “something good.” Each article they produce is of top quality. These articles, which could not be created elsewhere in the world, add richness and comfort to our daily lives.



## Tin Aroma Style Pendant (Tin Aroma Diffuser) Series

Simply add a few drops of your favorite essential oil to the pendant head and enjoy the aroma wherever you go. Choose from two designs: a snowflake or a five-petal lucky lilac flower. These pure tin pendant heads are crafted with advanced casting techniques in Toyama Prefecture, which is famous for traditional craftsmanship spanning a course of over 400 years. Despite being metal, the pendant heads are pliable and can be curved to your liking for a personalized finishing touch.



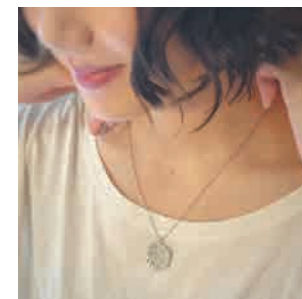
A **Lucky Lilac** Size: H2.6×W2.3×D0.4cm

B **Yuki** Size: H2.6×W2.3×D0.2cm

Materials: 100%tin, silver 925 rhodium coating (chain)  
Size:40 - 45cm

Herb & Glass K's Factory is dedicated to producing natural scents and products for enjoying them without having to rely on artificially created chemical scents. The goal is to share the soothing effects of plant-based fragrances with as many people as possible.

01 Herb&Glass K's Factory→P45





## Gentle, Cute, and Playful

### 02 id.Lumina Key case

With the gentle, cute, and playful design, these key cases offer a new sense of value and comfort. The reel inside the case's mouth instantly "swallows" your key.

Size: H15×W9×D5cm  
Materials: cow leather  
Colors: white, red, green, blue, black, orange

### 03 id.J Rucksack

This unique leather case was developed in line with the concept, "to create an opportunity for conversation." It features leather of the highest quality and diamond-shaped beady crystal eyes.

Size: H38×W25×D10cm  
Materials: cow leather  
Colors: white, red, green, blue, black, orange

### 04 id.Zion Florist case

This unique leather case was developed in line with the concept, "to create an opportunity for conversation." It features leather of the highest quality and diamond-shaped beady crystal eyes.

Size : H25×W9×D4cm  
Materials: cowhide  
Colors: white, red, green, navy, black, orange, brown



As a leather case brand, we pursue the highest quality in function, durability and design. Our original items, each the outcome of stringent material choice and craftsmanship, exert a stunning presence.

02.03.04

i . d . o →P45



Back to basics,  
we pursue user friendliness.



### 05 WALTON Tote M CP

Size: H27×W40×D17cm  
Materials: canvas (produced in Japan), leather (produced in Italy)  
Colors: regular (unbleached) black  
\*other colors available upon order

A tote bag created in pursuit of excellence of both function and material. Larch forests, home to many Hokkaido animals, are depicted on the inner fabric. The salmon-shaped leather charm hanging from the handle is another attractive feature.

### 06 WALTON Sacoche

Size: H20×W29×D4cm  
Materials: canvas (produced in Japan), leather (produced in Italy)  
Colors: regular (unbleached) black  
\*other colors available upon order

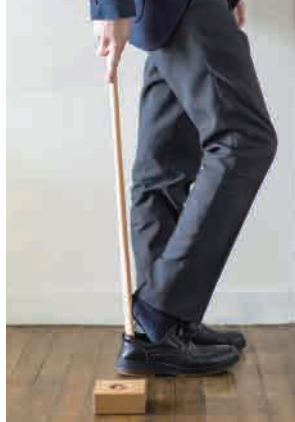
The simple sacoché bag is just the right size with adequate space to contain the minimum items. It is also light and easy to carry around. Like the tote bag, a salmon-shaped charm is attached to the handle.

05.06 KEETS Inc. →P45

Based on key words like, "simple, minimal and unique," which are also applicable to the lifestyle in the northland, we carefully produce bags using Hokkaido-produced wood and buckskin of Japanese deer, as well as strong canvas manufactured in Japan.







Small daily  
life companions

## 07 Northern Furniture for the foyer: the "Chokotto" Shoehorn

Compact items suited to an urban lifestyle. They even fit in the narrow foyer of apartment buildings. The design makes the most of the warmth of the material, Sargent cherry from Hokkaido.

Size: H76.8xW10xD10cm Materials: Sargent cherry (from Hokkaido)



Cute and Comfy

## 08 Bean Stools

The seats of these stools are gently shaped to resemble plump beans. The upholstery comes in four colors inspired by the beans produced in large quantities in Hokkaido: white (white runner bean), yellow (soybean), green (green soybean), and brown (adzuki bean). The legs are made of castor aralia wood produced in Hokkaido.

Size: H41xW31xD43cm

Colors: white (white runner bean), yellow (soybean), green (green soybean), and brown (adzuki bean)

Material: castor aralia

07.08 Mio-Kobo Co., Ltd. →P45

Having both excellent design and functionality, Mio-Kobo's quality furniture brings a touch of color to everyday life. The company delivers products handcrafted from natural materials in Sapporo, Hokkaido.



Nostalgic school  
chair in daily life

## 09 A-100(Reproduced)

This is a reprint of the first school chair made of steel and wood in Hokkaido about 60 years ago, in order to improve the safety and reduce the weight of school chairs, which were made entirely of wood. This time, the chair has been reissued with improvements to make it easier to sit on and to make it suitable for children and adults.

Size: H75xW36xD44cm

Materials: Hardwood plywood

Colors (frame/back and seat): Black/brown, black/natural, white/natural, clear/brown, clear/natural



09 Ichimura Co., Ltd. →P45

Ichimura's starting point was a chair that wished for children's smiles and growth. We continue to expand our products and services to various fields with new ideas, keeping in mind the needs of users, while keeping an eye on the changing times.



BUY



## From Flames That Give Warmth to Flames That Enchant



## 10 GURU GURU FIRE

This unique open fire stand boasts a stylish design besides being practical, enabling people to watch flames roaring up into the dark from inside the rings. You don't need any tools to assemble it and can also enjoy how the iron ages over time.

XS: Size: H22×W22×D34.2cm  
S: Size: H33×W33×D50.5cm  
M: Size: H41×W41×D67.3cm  
L: Size: H51×W51×D84.5cm

Material: iron

**10** Tri Path Co., Ltd. →P45

Tri Path crafts quality products while having fun under the slogan Tanoshi-metaru (thrilling metalwork). Advanced sheet metal processing technology is employed to deliver unique products.

BUY



11

## Assembled Japanese-style room “KUMITATE2015 Vee. Abies sachalinensis”

A 2-tatami Japanese room built with traditional Japanese techniques. It can be assembled anywhere without any tools. The joinery panels can be fitted in any layout.



©Sakai Koji

## Making use of local wood and skilled craftsmen

Includes: basic frame, floor board, tatami, joinery panels(basic wall×1, staggered shelves chigaidana ×1, tokonoma×1, crawl-in entrance nijiriguchi×1, shoin×1, eaves×4, Japanese style sunroom engawa×1)

(Body) Size: H220×W188×D229cm (including sunroom)

(Eaves) Size: H2.5×W313.5×D313.5cm

Joinery panels (tokonoma, nijiriguchi, shoin, eaves, engawa) customization available

Materials: basic frames: Japanese cedar (From Miyazaki), joinery panels: Sakhalin fir *Abies sachalinensis* (From Hokkaido)



©Sakai Koji

**11** Uchida Yoko Co., Ltd., Hokkaido Branch  
Laboratory of Architectural Design, Faculty of Engineering, Hokkaido University  
(former Laboratory of Architectural History and Design) →P45

By applying Japanese Wood Joinery techniques and building system which can be done by few people, we offer the Japanese space of “Takumi” reproducing anywhere. This is a new idea about community development born in University of Hokkaido graduate School, Laboratory of Architectural Design.

BUY







12

## Basic skin care items born in Sapporo



13



14

### 12 SAVON de SIESTA Solid Soap

This solid soap with its gentle touch to the skin has a moisturizing effect. It is produced by a cold processing and manufacturing method, which includes aging the rich Hokkaido natural ingredients for 40 days without adding heat.

Content: Approx. 80g  
Types: Plain, Lavender, Adzuki beans, Goat's milk, Shirakaba (white birch), Yukihada (snow-white skin)

### 13 SALT DE SIESTA

This bath salt contains only Hokkaido-produced ingredients, including sugar, milk, honey and camellia oil. No synthetic perfumes, or other additives are used. Choose one of the 3 kinds in line with your mood.

Content: 40g  
Types: Moisturizing floral scent, Refreshing forest scent, Soothing shea butter for sensitive skin

### 14 SAVON de SIESTA Skin Cream

A skin care cream produced with natural ingredients. 2 varieties (Calendula Baby, Shea Rich butter) are available.

Content: 9.7g  
Types: Calendula baby, Shea rich butter

## With blooming honey in Sapporo



15

### Sakkamitsu

This soap made from only natural material, mixing honey from flowers in the middle of Sapporo, sunflower oil from Nayoro and Sakhalin fir (*abies sachalinensis*) oil from Shimokawa. The honey is produced by Odori High School, which has won the top prize in Japan.

Content: Approx. 80g

## Enjoy the aroma of Hokkaido in your room



16

### SAVON de SIESTA Room Fragrance

This indoor air freshener contains Hokkaido-produced essential oils. Only natural flavors are used and no synthetic perfumes. The soothing fragrance lasts about one month.

Content: 100ml  
Aroma of citrus and mint,  
aroma of forests, aroma of flowers

To offer comfort equal to a daytime nap as a moment of relief amid your daily schedule, our veteran staff carefully produce each item by hand at our studio in Sapporo, using only natural materials and strictly observing our trusted manufacturing processes.

12.13.14.15.16

Savon de Siesta→P45



To nourish your skin with  
the blessings of mother earth



## 17 BABY & MOTHER

This skin-care series includes moisture-rich natural horse oil produced in Japan and Hokkaido-grown white birch sap. You can even use this product for delicate baby skin.

- A Moisturizing horse oil cream**  
10g / 80g
- B Solid soap made of horse oil**  
Content: 80g
- C Foaming liquid soap made of horse oil**  
Content: 300 ml (refill 500ml)

We offer skin care products that can readily be used for babies, expectant and nursing mothers as well as senior citizens. High-quality Hokkaido-produced ingredients are used for these items that are gentle on the skin like a mother's hands embracing her child.

17 The St Monica →P45



## Sanitizing/Washing/Moisturizing lotion

## 18

### Karadakirei

This is the all-in-one-lotion including sanitizing, washing, moisturizing and protecting, no need to rinse. It's been tested for sanitizing and safety, cleaning power, moisturizing. It is gentle enough for use on babies and faces. It can be used for a wide range of purposes, from emergency stockpiling to nursing care, including sterilization of the face and fingers, difficult bathing, diaper changing, and outdoor use. Winner of the 2019 Hokkaido town development of welfare award ; welfare equipment

Content: 80ml (Approx. 13days) ,  
150ml(Approx. 25days)

Abyssal Japan is the skin care brand produced from Hokkaido-grown sugar and vegetables. With the blessings of the land of Hokkaido, it brings out the natural beauty of your skin while conditioning it and making it more clear.



18.19 Abyssal Japan →P45



## 19

### Sweet Skin Care Series SUCRE

This safe and effortless skin-care product series including Massage & Pack for the face, Face & Body Scrub and a bath agent is based on food-derived natural ingredients.



To moisturize your skin  
with the power of sugar

- A Face & Body Scrub**  
Content: 200g  
Types: 5 types  
(Lavender, Japanese Mint, Citrus, Vanilla, Rosemary)
- B Massage & Pack**  
10g / 3units / 5units / 35g  
Types: 5 types  
(Lavender, Japanese mint, Citrus, Vanilla, Rosemary)
- C Sugar Bath**  
Content: 40g  
Types: 3 types (Lavender, Japanese Mint, Citrus)



## IMAGINATION

【Sapporo × figure】

Sapporo has distinct seasonal attractions and its cityscapes completely change with the season. The colorful scenery of Sapporo produced by ice, wind, forests and northern animals inspires us and stirs our imagination and sensitivity. We hope that the “figures” created with inspiration from the city will become welcome companions in your daily life.



20

## monmecci Bag

The large bag made of original textiles.  
It opens wide and quickly closes with a magnet.



## Original hand-dyed colored textiles

20 monmecci→P45



Cloth handles  
Leather handles  
Size: H73×W42×D25cm  
Materials: 100% cotton



21

### Series of snow and ice candles

This fantastic candle series reproduces the atmosphere of winter in Sapporo. The soft yet stable candle light, which reminds us of snow and ice, gently and warmly lights up the surrounding area.

#### Candles in Sapporo Blues Flicker Softly



A candle produced to reflect the beautiful and somewhat solemn winter in Sapporo.

**Frost Pillar** Size: H12×W4×D4cm \* Contained in a clear case



A candle to be floated on ice.  
Frost flowers are illustrated on it.

**Frost Flower**

Size: H1.3×W5.2×D6cm  
\* Contained in a clear case



A nostalgic candle designed to recreate the image of  
pieces of thin ice overlapping each other.

**Ice Butterfly**

Size: H3×W8×D6.5cm  
\* Contained in a clear case

22

### SNOW WING Candle

This lively candle is designed to reflect snow-made wings that flutter toward a sky of hope. The subtlety of snow and ice pillars is expressed by carefully linking the silky wings comprising the candle one by one.

A graceful snow wing  
fluttering  
in your room



Size: H28×W10×D5cm  
Box (laying) H8.3×W14.6×D31.6 cm  
\* The price and specifications are  
subject to change without prior notice.



21.22 Yuko Fukui,  
Progressive Candle→P45





23

### Paper Soap "Hatsuyuki"

On a cold winter day, you can feel a fluffy snowflake fall from the sky onto your hand. Such scenery exclusive to this northern region takes shape in this cell-phone size paper soap. Upon contact with moisture, it will instantly melt and turn into bubbles.



Snowflakes turning into bubbles one by one



12units Size: H14xW11.5cm

23 Savon de Siesta→P45



Instill your wish into these mountain charms

24

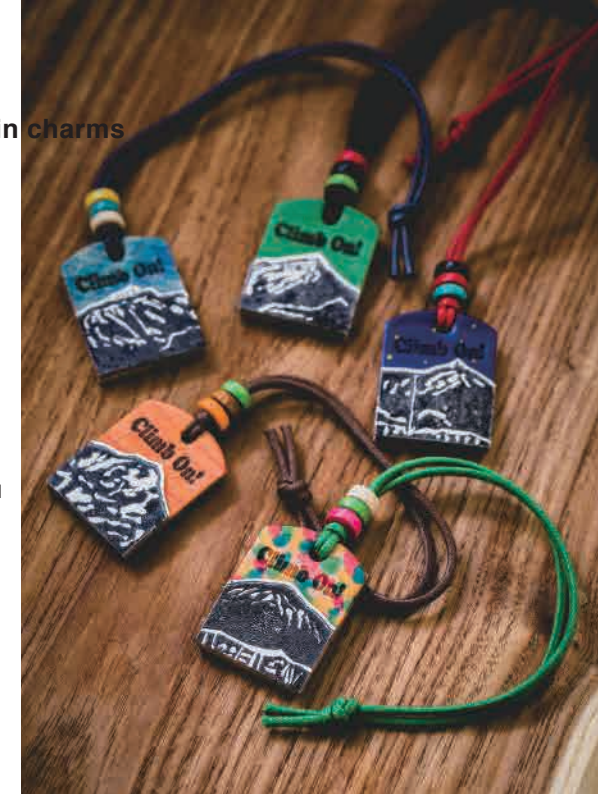
### Mountain lucky charm (with Sapporo mountains), message column on the reverse side

Various mountains around Sapporo are depicted on the hand-dyed leather. You can write a letter or message on the reverse side. Great choice as a personal tag or present to a dear one.

Size: H3.5xW2.5xD4.5cm  
Types: Mt. Maruyama, Mt. Okura, Mt. Moiwa, Mt. Hakken, etc.

24

STEPPING STONES  
→P45



Play and learn "Sapporo's colors"



25

### Sapporo's Scenery Color 70 Series

The tools for learning about color in a fun way represented by Sapporo's scenery. Each of them is named after a color: "woolly aphid color", "Moerenuma color", "Snow Festival color", etc.

A Sapporo's Scenery cards, "Sapora"  
Size: H18xW11xD4cm

B Sapporo's Scenery 70 colors Origami  
40sheets Size: H15xW15cm

C Sapporo's Scenery The book for thinking about city's color  
64 pages

25

Hokkaido color design laboratory→P45



Rabbits bring happiness  
to the table



26

### Tableware Series to Enjoy Sapporo

Seen as a symbol of good fortune in Japan, rabbits are a popular motif on porcelain. With beautifully hand-painted soft illustrations, this porcelain series features a rabbit story set in Sapporo.

- A Mug: Falling snow seen through a window  
Size: W11.5xD8.5xH8cm
- B Chopstick rest: Building a snowman  
Size: W6.0xD5.1xH1.6cm
- C Wagashi plate: Building a snowman  
Size: W15.2xD7.5xH1.3cm
- D Cloud-shaped plate: Falling snow seen through a window  
Size: W14.3xD14.3xH3.1cm
- E Sapporo tiny plate  
Size: φ9xH1.8cm



26

Kuroha tokobo→P45



27

### Leaf-shaped Coaster

By infusing a new breath into ash, walnut and other wood scraps, we have produced this beautiful leaf-shaped coaster using a mosaic technique. Enjoy a relaxing moment in your daily life with the warmth of Sapporo, a city filled with greenery.



Wood scraps brought  
back to life  
in wooden mosaic

Size: H16xW8xD0.7cm  
Materials: ash, walnut, etc.

27 Sapporo Clover (NPO)  
Kobo Clover→P45





## "Hyoteki"

This glass plate, as fine as thin ice, symbolizes water drops of all sizes dripping onto ice. This plate brings a sense of coolness to your table during the short, yet hot summer in Sapporo.

### The glassware, bringing coolness to the table



- A flat** Size:  $\phi 19 \times H0.6$ cm  
**B square** including 2 plates Size:  $H1.5 \times W12 \times D12$ cm  
**mini** Size:  $H1.4 \times W8 \times D8$ cm

28 Rikospoppo /  
Eriko Yoshida → P45



### Lovely sheep inviting smiles from everyone



29

### Fluffy Lambkin Chair BTO

These fluffy chairs made of Hokkaido wool are one by one carefully completed by hand. The lovely sheep face with its cloud-like touch will add warmth to your room.

Size:  $H33 \times W27 \times D45$  cm



30

### Fluffy Lambkin

This adorable lamb mascot is designed to represent a fleecy cloud in the shape of a sheep floating in the sky above Hitsujigaoka hill. The product line includes stationary articles incorporating Hokkaido-produced sheep wool, straps, bookmarks and photo postcards.

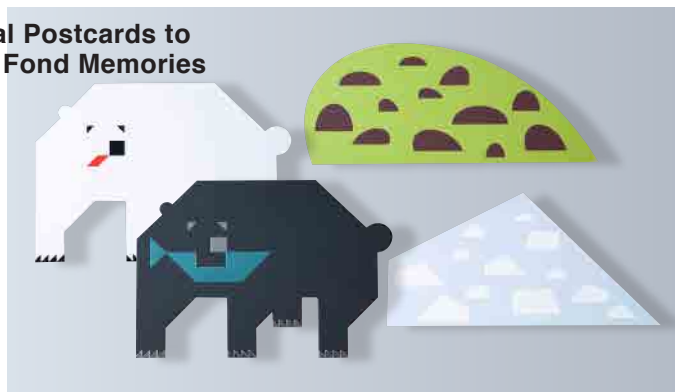
- A Mascot**  
Size: From  $H5.5 \times W4$  × from  $D4$ cm  
**B Strap**  
Size:  $H3.5 \times W2 \times D3$ cm  
**C Bookmark**  
Size:  $H3.5 \times W2 \times D3$ cm  
**D Postcard**  
Size:  $H14.7 \times W10$ cm

29.30

maaberry Co., Ltd.  
(oioe noriko) → P45



## Special Postcards to Share Fond Memories



### 31 Hokkaido Postcards

These postcards feature the nature and other features of Hokkaido. Foil stamping and other intricate finishings on uniquely textured paper affirm true craftsmanship.

Size: from H8.4xW20cm  
Types: Polar bear, brown bear, drift ice, mountains  
Material: Paper

31 Hokkai Shikohsha Co., Ltd.→P46



## Get to know and enjoy northern animals in your daily life



### 32 Northern Animals "Origami"

This product has been discontinued.

With this origami set, you (or those who receive this) can re-create the animals living in Sapporo. Four types, namely, Ural owl, brown bear, Ezo red fox and Hokkaido red squirrel, are available.

8 pieces  
Size: H12.5xW12.5cm  
Types: Ural owl, Brown bear, Hokkaido red squirrel, Ezo red fox

32 Kitanihon Advertising Inc.→P46



**A Kino ZOO**  
S-large, S-small, L  
Size: various  
Materials: (S) katsura, (L) castor aralia

**B Strap and Magnet**  
Size: H3xW3xD0.8cm  
Materials: cherry wood  
Types: 8 types in total



**C Magnet Board**  
Size: H47xW47xD20cm  
Materials: katsuka, castor aralia  
Colors: green, orange



### 33 Kino ZOO series (Wooden Zoo)

Popular animals from Sapporo Maruyama Zoo are featured in wooden figures, straps, magnets, puzzles and other educational toys and general goods. All items are made exposing the texture of the wood maximally. These products have also been approved as official zoo goods.

33 Social welfare corporation  
Kusno-mi-kai  
Kusano-mi-kobo Moku→P46



**D Assortment with Wooden Box**  
(S)28 kinds of animals  
(L)30 kinds of animals  
Size: (S)H27xW15xW9cm  
(L)H40xW28.5xD11.5cm

**E Puzzle with Four Animals**  
Size: H15xW9xD2.5cm  
Materials: katsura

### 34 GEL-COOL (GEL-COO-Ma Series)

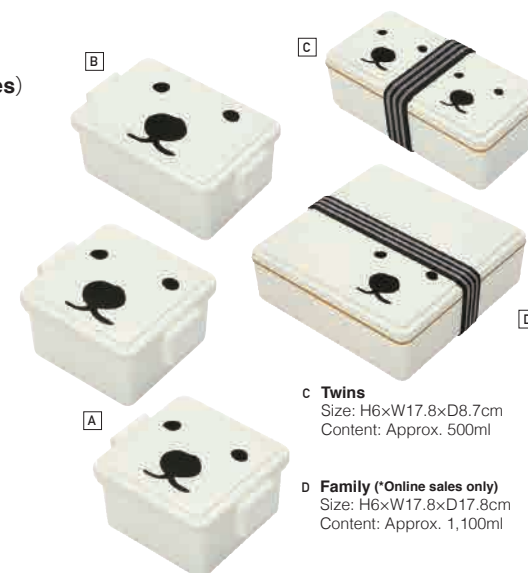
These lunchboxes feature a design of Maruyama Zoo's popular polar bear face. The lid contains a refrigerant that keeps the lunch cold until lunchtime. A portion of the sales will be donated to the zoo.

34 MIYOSHI Seisakusho Co., Ltd.  
→P46



**A Male and female bears**  
Size: H5.5xW11xD9.4cm  
Content: Approx. 220ml

**B Boss**  
Size: H6xW15xD9.4cm  
Content: Approx. 400ml



**C Twins**  
Size: H6xW17.8xD8.7cm  
Content: Approx. 500ml

**D Family (\*Online sales only)**  
Size: H6xW17.8xD17.8cm  
Content: Approx. 1,100ml



# MATERIAL

## 【Sapporo × material】

With the melting of snow in the fields and mountains of Hokkaido, vegetation germinates, colorful flowers come into bloom and wild animals like Hokkaido sika deer and red foxes, begin running around. In Sapporo, a city blessed with rich natural surroundings, you can find many heartwarming products that have been created taking advantage of local materials. Please touch them to directly feel them breathing and exuding the inner warmth of the northland.



35

### Ezo's Ukulele

**Sapporo's tone produced by a ukulele made of Japanese spruce**

This is a product with a unique gap between a tropical instrument, the ukulele, and wood from the cold climate of Hokkaido. It is highly regarded by experts and its high quality sound brings warmth to life in the north.

Soprano size, concert size  
Size: Soprano size H54×W17×D7cm;  
concert size H61.8×W19.6×D7.3cm  
Materials: Glehn's spruce, Ezo spruce,  
Sakhalin fir, Japanese pagoda tree  
(all from Hokkaido)

35 Quiam→P46



Woodwork items that convey  
the craft workers' aspirations



The plate in the photo is from the children's  
"Shima-shima" series.

### 36 "Shima-shima" series

"Shima-shima" series retains the warm wooden texture of Hokkaido-grown Alnus and Birch. The stripes inscribed in the handle produce a nonslip surface allowing everyone from babies to adults to use these dishes with ease.

Shima-shima small tray Size: H2.5×W20×D18cm  
Shima-shima deep tray Size: H2.5×W32×D25.2cm  
Materials: Birch(from Hokkaido)  
Shima-shima Kids' dish Size: φ10×H3.5cm  
Shima-shima Kids' bowl Size: φ8.4×H4.5cm  
Materials: Alnus (from Hokkaido)

### 37 Poko Poko Baby Spoon

Conveying the warmth of Hokkaido wood, this spoon can easily be held by a baby to scoop with.

Single item, Gift set  
Size: H10.5×W3.5×D2cm  
Material: Cherry wood (from Hokkaido)



### 38 Friends of the Forest

These sets consisting of a Poko Poko Baby Spoon and an item from the Shima Shima series support baby's weaning journey.

#### A Amu Amu set

Includes: Shima shima child bowl x 1 / Poko Poko baby spoon x 1 / Gauze baby towel x 1 / picture book "Friends of the Forest" x 1

#### B Mogu Mogu set

Includes: Shima Shima child plate x 1 / Poko Poko baby spoon x 1 / Gauze baby towel x 1 / picture book "Friends of the Forest" x 1



### Small daily life companions

### 39 Tableware Living With the Forest coberu Series

Expressing the comfort of living in the forest with the gentle touch of wood. Flat plates that go well with all kinds of food, and bowls with gentle curves. Made from alder trees grown in Hokkaido.

**Dish**  
S M L  
Size: S φ16×H3.5cm  
M φ19×H3.5cm L φ22×H3.5cm  
Materials: Alder (from Hokkaido)

**Bowl**  
S M L  
Size: S φ10×H4.5cm M φ13×H6cm  
L φ16×H7cm  
Materials: Alder (from Hokkaido)

### A small but versatile blackboard eraser

### 40 Strap with mini blackboard eraser

The classic blackboard eraser is elaborately reproduced in this long seller. The top board is made of scarlet cherry wood from Hokkaido with a beautiful wood grain. You can use this miniature blackboard eraser to clean your cell- or smartphone screen.

Size: H3.5×W1.5×D1.5cm  
Materials: scarlet katsura wood (from Hokkaido)



36.37.38.39.40

Chiemoku Co., Ltd.  
→P46







Putting our hopes for the arrival of spring into water drops.

## 41 Torori series

Sapporo residents long for the arrival of spring. This accessory series is made of Hokkaido-grown maple, Japanese pagoda tree and other local materials. The Torori series is shaped like water drops from melting snow to express the joy of the thawing season. Each item is soft to the touch and is comfortable to wear.

Necklace  
Earrings  
Clip-on earrings  
Drop only: H2.3cm to 3cm x W1.5 to 1.8cm  
Materials: maple, cherry wood walnut, etc.  
All materials are from Hokkaido.

41

hikuidori→P46



You can hang  
whatever you like

## 42

### Hook tree

A small tabletop forest is included in the design of this hook. Soft colors of Hokkaido-grown trees are combined in this mosaic work. Hang accessories, watches, keys or whatever you like from the branches.

Tall Size: H27xW15xD15cm  
Medium Size: H21xW13xD13cm  
Short Size: H12xW8xD8cm  
Materials: Hokkaido-grown wood

42

Sapporo Clover  
(NPO) Kobo Clover→P45



Packages produced made of  
wood from Hokkaido forests

## 43

### Ezomatsu craft original boxes

This paper box is made of our original packaging material "Ezo spruce craft." The wooden texture is reproduced in this package made of wood scrap powder from the Ezo spruce, which is only grown in Hokkaido in all of Japan. Enjoy wrapping something in packaging which embodies the "essence of Hokkaido."



Original packages \*Gift boxes  
(price of small size, light brown color)  
5 units / 30 units / 100 units  
Size: H5xW14xD14cm  
\* Ask Morita Corporation for details on size, etc.



43

Morita Corporation→P46





**Colors exclusive to Sapporo are produced by vegetable-dyeing**

44

#### Onion-dyed stole

Sapporo is known as the birthplace of onion cultivation in Japan. Hemp, silk and cotton are dyed with special Sapporo onion peels, and woven into stoles. Three color variations (khaki, yellow(alum), copper) are available.

Stole  
Size: H33 - 55×W130 - 180cm  
Materials: Silk + rayon, cotton + hemp, cotton  
Colors: khaki, yellow(alum), copper.  
\*The photo is yellow.  
\*Actual size, color and design may vary.

#### Onion-dyed placemat and coaster

Hemp thread is dyed with onion peels and woven into coasters and placements with a weaving machine. The soft feel exclusive to vegetable-dyed items match the dining table. Two color variations, khaki and gold, are available.

Coaster Size: H13.5×W9cm  
Placement Size: H50×W30cm  
Colors: khaki, gold  
\* Actual size may vary.

44

Craft Studio Hamanasu  
→P46



45

#### Suffolk Leather Purse Series

The Purse series of lambskin from Hokkaido "Suffolk leather". Under the concept that "Finding the value from waste", we use sheepskin that used to be discarded in Shibetsu.



**Lightness and softness, the features of lambskin.**

45 Fu's room→P46

BUY



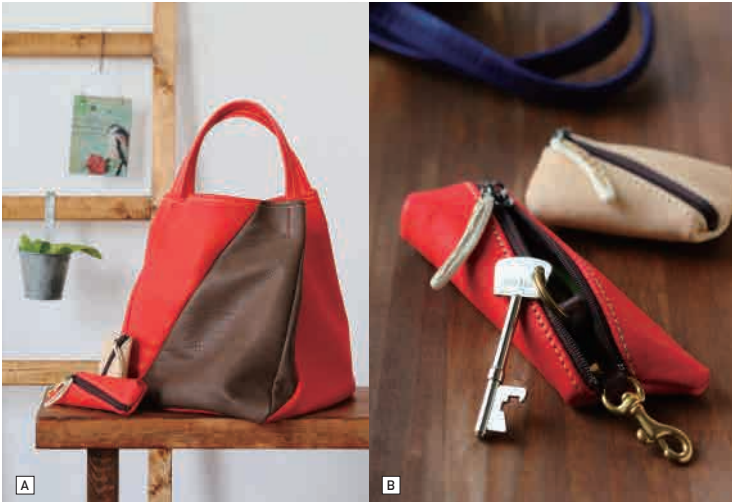
Size: S H7×W7.5×D1cm, M H7.5×W11×D2cm, L H10×W15.5×D4cm, long size H7×W19×D3cm  
Materials: sheepskin (from Hokkaido)  
8 colors (red, green, black, lemon, etc.)



Diagonal lines form a sharp impression.

46  
EZO/slash series

This bag made of light, strong Ezo deer leather features stylistic yet friendly diagonal lines. The product line includes simple lightweight bags and small articles that incorporate Ezo deer antler as the zipper pull.



46 24KIRICO→P46



A Bag  
Size: S / H23×W18×D18cm  
M / H29×W23×D23cm  
L / H34×W27×D27 cm  
Materials: deerskin (shell),  
Cotton made in Japan (lining)  
Colors: bicolor (see photo), monochrome

B Key case Size: H15×W5×D2cm  
Coin case Size: H9×W5×D1cm  
Pouch Size: H15×W9×D2.5cm  
Pencil case Size: H19×W4×D2cm  
Materials: deerskin (shell),  
pigskin made in Japan (lining)  
Colors: red, black, blue, beige,  
limited colors, etc.



Flexible Ezo deer leather  
brightens up the winter.

47  
Mints beret series:  
Yuku's beret

"Yuku" means deer in the Ainu language. The strong, flexible Ezo deer leather is used in this feminine beret. The vivid colors brighten your winter wardrobe.

Size: S 56cm M 58cm  
Materials: Ezo deer leather  
Colors: orange, brown, Bordeaux, navy, etc.

47

Kazue Fukui, WORKS207 / Mints→P46



48

Mitutumi

Reusable, washable eco-wraps created from hand towels that have been hand-printed using a silk screen and beeswax sourced in Sapporo are not only environmentally friendly, but also keep food fresh.



Beeswax Cloth Wraps for Ecological Lifestyles

S: Size: H20×W20cm M: Size: H28×W28cm  
Materials: Cloth, beeswax, jojoba oil, pine resin

48 Oasis Create→P46



## LIFE

## 【Sapporo × lifestyle】

We eagerly wait for winter because we miss the snow. Since it snows a lot in Sapporo, we also long for the arrival of spring. Life in Sapporo follow this cycle, directly in contact with both the warmth and strictness of nature. The products introduced here have been created to make our lives here more comfortable. They also serve as “something good” both for people in Sapporo and elsewhere in the world.



## IMVER Series

## A functional wear corresponding to changing weather.

Tailored jackets, pants, and coats made from functional materials cultivated in snowboarding wear. The waterproof and breathable material flexibly responds to the changing climate and temperature differences in Hokkaido.



Stretch Tech Tailor  
Size: S, M, L, XL  
Materials: 92% (Nylon), 8% (Polyurethane)  
Colors: black, gray, navy, khaki

Stretch Tech Trousers  
Size: S, M, L, XL  
Materials: 92% (Nylon), 8% (Polyurethane)  
Colors: black, gray, navy, khaki

Stretch Tech coat  
Size: S, M, L, XL  
Materials: 92% (Nylon), 8% (Polyurethane)  
Colors: black, gray, navy, khaki



49

Four Seasons co.,ltd.  
→P46





50

## abonet

This hat, offering both safety and fashionability, was developed through collaboration by the government, industry and academic circles. It protects your head against the severe cold of the northland as well as injury in case of a fall on the icy winter streets.

- A** Hat-shaped shade  
Size: 55 - 57cm  
Materials: rayon (shell), polyester (lining),  
Mesh + PORON (padding for back of the head only)  
Colors: beige, black
- B** Tyrolean hat  
Size: 58 - 60cm  
Materials: acrylic (shell), polyester (lining)  
Mesh + PORON (padding)  
Colors: beige checkered, navy checkered
- C** Crochet Tweed  
Size: 55 - 57cm  
Materials: rayon, wool (shell), cotton (lining),  
Mesh PORON (padding)  
Colors: orang, gray

**Walk around a snowy region  
in a safe and cool way.**



- D** (Outer: Knit cap with ear muffs)  
One Size Fits All  
Materials: acryl (shell), acryl + polyester (earmuffs)  
Colors: khaki with wood grain, gray with wood grain
- E** (Outer: Onion-shaped beret)  
Size: Free size  
Materials: 100% hemp (shell), 65% polyester,  
35% cotton (lining)  
Colors: blue, mustard, olive, brick,
- F** (Outer: Reflect Watch cap)  
Size: Free size  
Materials: 100% cotton (shell), 95% cotton,  
5% polyurethane (rib)  
Colors: purple gray, gray, black

Note: No protective materials are included in products D to F.

- G** (Cap lining with bead, hard type)  
Size: Medium (50 - 56cm) Large (56 - 61cm)  
Materials: polyester (shell / lining), polyester (lining),  
polyethylene beads (padding)  
Colors: black

50

Tokushuiyou Inc.→P46

BUY



51

Mints beret series  
<Sapporo Beret>

This beret is designed for Sapporo citizens to enjoy fashion even in winter. The ingrained wool repels water and makes it easy to shake off the snow. Choose from navy, red and hounds tooth check patterns, all of which look great against the pure white snowscapes.

Size: S 56cm M 58cm  
Materials: wool, cassimere, etc.  
Colors: navy, off-white, blue-green, red,  
hound' s-tooth check, etc.

**An ideal beret when taking a  
walk in the snow-white street.**



51

works 207/Mints(Kazue Fukui) →P46



**Laundry cleaner in a can designed  
with images of  
Sapporo's characteristics**

52 Tomioka Cleaning  
"Laundry Detergent in a  
Milk Can" Series

This laundry detergent comes in a pretty milk can that was developed for professional use by a dry cleaner's shop in Sapporo, a city where dairy farming flourishes. With this detergent, you will no longer be annoyed by bad smells due to indoor drying, an unavoidable occurrence in Sapporo.



Content: 800g  
Types: Original, Plus and Flower

52

HAPPY TREE→P46

BUY





## May hope and joy support life with your favorite pet dog

Moisture-retaining stretch fabric is used for this overall to help retain the dog's body temperature and protect it against dirt, snow and other complications of various outdoor scenes.

### 53 W. Full Dog Guard

Size and type: 14 sizes available, from SS to CGL depending on dog breed  
Materials: 94% polyester, 6% polyurethane  
Colors: Pink, blue

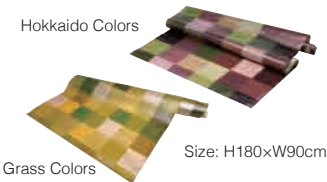
53  
ALPHAICON(ICONs, Inc.)→P46



## A picnic sheet that matches natural landscapes

### 54 "Sakura sheet" Hokkaido Colors / Grass Colors

This picnic sheet adorned with designs in a Japanese atmosphere is characterized by a texture of bonded material. It goes well with the natural landscape. There are two types of design: "Hokkaido Colors" based on the soil and the grass in May when cherry blossoms begin to bloom in Hokkaido, and "Grass Colors" that represents the season of cherry blossom in Tokyo.



Grass Colors

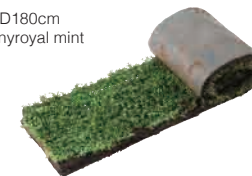
Size: H180xW90cm

## Grow a herb carpet and enjoy the fragrance

### 55 Herb Carpet

This herb seedling mat can be used as a fragrant carpet. It takes root in two weeks after seeding and remains thawed even under the snow and is thus ideal for use in the garden or as rooftop greening. The rolled carpet can easily be cut and fit into a small space.

Size: W30xD180cm  
Herbs: Pennyroyal mint



54

Planning and design: Sato Design Room Co., Ltd.  
Manufacturer: Yamauchi Vyle Processing Co., Ltd.  
Distributor: Word M Corp.  
→P46



55

Kuroda Herb Noun Hokkaido  
→P46





Usable stationaries suit  
for your lifestyle flexibly

56

## booco Series

The multi-colored thread-bound pages are both playful and easy to open. The notebook is colorfully designed based on the concept of Hokkaido's specialties (asparagus, corn, etc.).

A booco DIARY  
Size: H19.3xW12.6xD1.8cm  
Color: Indigo sky, Crimson sky, Violet sky

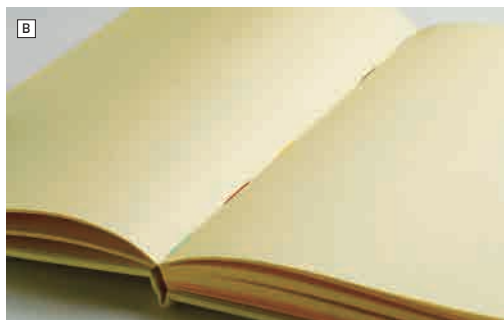
B DELICIOUS COLOR notebook  
Size: H18.4xW12xD1.3cm  
Types: Asparagus, Potato, Corn, Milk, Sea urchin

c booco 凸 (embossed) Diary  
Size: H19.3xW12.6xD1.8cm

D Delicious Color Notepad  
Size: H9xW9xD1.3cm  
Types: Asparagus, potato, sea urchin, corn, milk

Materials: paper, strings

56 Ishida Bookbinding Co., Ltd.→P46



## The Universe in a tiny box

57

## MINiMuM Space Series

Compact paper multifunctional storage box. It opens and closes on both sides, and after opening to store things, it can be closed compactly. It can be used as a pen holder or a small accessory box.

Size: BOX-1, BOX-2 H9xW7.2xD7.2cm  
BOX-3 H3.5xW4.5xD4.5cm  
Materials: paper(MILKRAFT)



57

MORITA Corporation.→P46



## A guitar sound that perfectly matches daily life

58

## "Tsumuhikari" Kota Kanamori

The beautiful tones of the classical guitar played by Kota Kanamori, an artist from Sapporo, adorn your daily life like a companion. Enjoy a relaxing moment on a peaceful afternoon or a quiet spell before bedtime.

Number of recorded songs: 7 songs in total



58

Tsumiki Record→P46



01

## Kazue Katagi, Herb & Glass K's Factory

[Directly managed store]  
Palais-Roya II 1F, Kita-43 jo  
Higashi 15-chome 3-16, Higashi-ku,  
Sapporo  
(To prevent the spread of infectious  
diseases, shopping must be reserved in  
advance. ※except Sunday)  
011-792-2016  
herb\_ks\_factory@ybb.ne.jp  
<http://www.herb-ks-factory.com/>

02.03.04

## i.d.o, Inc.

Kikusui-Motomachi 7-jo 4-chome 3-17,  
Shiroishi-ku, Sapporo  
011-826-3422  
info@ido-jp.com  
<https://www.ido-jp.com/>

05.06

## KEETS, Inc.

[Directly managed store]  
Maruyama Nishimachi 1-chome 3-7,  
Chuo-ku, Sapporo  
011-699-5360  
info@keets.co.jp  
<http://www.keets.co.jp>

07.08

## Mio Kobo Co., Ltd.

[Directly managed store]  
Higashi Sapporo 2-jo 4-chome 8-18,  
Shiroishi-ku, Sapporo  
011-816-6797  
mail@mio-kobo.com  
<https://www.mio-kobo.com/>

9

## Ichimura

Satozuka 3-jo 1-chome 8-5,  
Kiyota-ku, Sapporo  
011-884-9410  
welcome@ichimura-seisakusho.co.jp  
<https://delt-shop.com>

10

## Tri Path Co., Ltd.

Shinko-Nishi 3-chome 750-7, Ishikari  
011-881-5211  
products-info@tripath.co.jp  
<https://products.tripath.co.jp/>

11

## [Product details and sales] Uchida Yoko Co., Ltd., Hokkaido Branch

Kita-1 jo Higashi 4-chome 1-1,  
Chuo-ku, Sapporo  
011-214-8613  
ml-hokkaido-info@uchida.co.jp

[Activities using an assembled Japanese-style room, etc.]

## Laboratory of Architectural Design, Faculty of Engineering, Hokkaido University (former Laboratory of Architectural History and Design)

Kita-13 jo Nishi 8-chome,  
Kita-ku, Sapporo  
011-706-6248  
[http://kumitatewashitsu.web.fc2.com/kumitate2015/01\\_Home.html](http://kumitatewashitsu.web.fc2.com/kumitate2015/01_Home.html)

12.13.14.15.16.23

## Savon de Siesta

[Directly managed store]  
AS Bldg. 1F, Minami 1-jo Nishi  
12-chome 4-182, Chuo-ku, Sapporo  
011-206-0710  
office@at-siesta.com  
<https://at-siesta.com/>

17

## The St Monica

Minami 2-jo  
Nishi 26-chome 1-1, Chuo-ku, Sapporo  
[Directly managed store]  
Kita 16-jo Nishi 3-chome 2-18, Elm N16  
011-213-7572  
info@stmonica.info  
<https://stmonica.info/>

18.19

## Abyssal Japan

Minami-4 jo Nishi 12-chome 1304-4,  
Chuo-ku, Sapporo  
011-530-6500  
info@abyssal.jp  
<http://www.abyssal.jp/>

20

## monmecci

Sun Mountain Bldg. 3F  
Kita 2-jo Higashi 1-chome 3-3,  
Chuo-ku, Sapporo  
011-881-5211  
products-info@tripath.co.jp  
<https://products.tripath.co.jp/>

21.22

## Yuko Fukui, Progressive Candle

Minami 26-jo Nishi 13-chome 1-20-1130,  
Chuo-ku, Sapporo  
090-9757-7783  
candle@s2.dion.ne.jp  
<http://p-candle.shop-pro.jp/>

24

## STEPPING STONES

[Directly managed store]  
1F, Kita-32 jo Higashi 18-chome 3-14,  
Higashi-ku, Sapporo  
011-780-1522  
shop@stepping-s.com  
<https://www.stepping-st.com/>

25

## Hokkaido Color Design Laboratory (Yuka Tonozaiki)

c/o COVO, Odori Koen West Bldg. 3F  
Minami 1-jo Nishi 7-chome 12-2,  
Chuo-ku, Sapporo  
080-8627-1173  
smile@h-colorlab.com  
<https://colorlab.official.ec/>

26

## Kuroha tokobo

kuroha@boreas.dti.ne.jp  
<https://www.kuroha-tokobo.com/>

27.42

## Sapporo Clover(NPO)

Kobo Clover  
Makomanai 143-9, Minami-ku, Sapporo  
011-252-7345  
clover@snow.plala.or.jp  
<https://clover95.wixsite.com/clover>

28

## Rikospoppo (Eriko Yoshida)

Kaminoppo 3-jo 4-chome 5-13,  
Atsubetsu-ku, Sapporo  
011-893-6067  
rikospoppo@gmail.com  
<http://rikospoppo.com/>

29.30

## maaberry Co., Ltd. (ooie noriko)

Teine-Honcho 4-jo 2-chome 4-12,  
Teine-ku, Sapporo  
011-684-0877  
info@maaberry.com  
<http://maaberry.com/>

31

## Hokkai Shikohsha Co., Ltd.

Minami 9-jo Nishi 15-chome 3-12,  
Chuo-ku, Sapporo  
0133-64-5633  
info@sikoh.co.jp  
<https://sikoh.co.jp/>

32

## Kitanihon Advertising Inc.

FWD Sapporo Bldg. 2F  
Kita 1-jo Nishi 13-chome 4,  
Chuo-ku, Sapporo  
011-241-2314  
m\_takase@ad-kitanihon.co.jp  
<https://www.ad-kitanihon.co.jp/>

33

## Social welfare corporation Kusno-mi-kai Kusano-mi-kobo Moku

[Directly managed store]  
Little Rose 1F, Minami 13-jo  
Nishi 7-chome  
2-3, Chuo-ku, Sapporo  
011-804-5019  
koubou-moku@kusanomikai.jp  
<http://www.kusanomikai.jp/>

34

## MIYOSHI Seisakusho Co., Ltd..

6-4-12 Higashi Sapporo 4jo, Shiroishi-ku,  
Sapporo  
Memorial Heights 88  
011-776-7727  
info@miyoshi-ss.com  
<https://www.gel-cool.jp/>

35

## Quiam

Sumikawa 1-jo 4-chome 4-27,  
Minami-ku, Sapporo  
011-598-7902  
info@quiam.com  
<http://www.quiam.com/>

36.37.38.39.40

## Chiemoku Co., Ltd.

[Directly managed store]  
Kobetsuzawa 140, Nishi-ku, Sapporo  
011-790-7012  
info@chiemoku.co.jp  
<https://www.chiemoku.co.jp/>

41

## hikuidori

miki.hikuidori@gmail.com  
<https://hikuidori.com/>

43.57

## Morita Corporation

Chuo 2-jo 3-chome 2-17,  
Shiroishi-ku, Sapporo  
011-831-1151  
info@morita-package.com  
<https://www.hakop.jp/>

44

## Craft Studio Hamanasu

Kita 35-jo Higashi 1-chome 6-2,  
Higashi-ku, Sapporo  
011-723-2515  
hamanasu@silver.ocn.ne.jp  
<http://poporo-vg.wixsite.com/poporo116>

45

## Fu's room

4-2-1, Sumikawa 5jo, Minami-ku,  
Sapporo  
011-812-8889  
info@fusroom.com  
<https://www.fusroom.com>

46

## 24KIRICO

Odori Nishi 18-chome 1-40-307,  
Chuo-ku, Sapporo  
011-577-8104  
info@24kirico.com  
<https://24kirico.shop-pro.jp>

47.51

## Kazue Fukui, WORKS207/

Mints  
works207@ark.ocn.ne.jp

48

## Oasis Create, Hokkaido Resource Consulting

603 & 604 Kita 1-jo Nishi 10-chome 1-13,  
Chuo-ku, Sapporo  
011-777-9116  
oasiscreate.s@gmail.com  
<https://www.oasis-create.com/>

49

## Four Seasons co.,ltd.

Iwasa Bldg 1F, Kita 3-jo Higashi  
5-chome-5, Chuo-ku, Sapporo  
011-212-1724  
info@4ss.jp  
<https://www.imver.jp/>

50

## Tokushiryu Inc.

Hassamu 14-jo 14-chome 2-40,  
Nishi-ku, Sapporo  
011-663-0761  
info@tomoni.co.jp  
<http://www.tomoni.co.jp/>

52

## HAPPY TREE, Inc.

[Directly managed store]  
Kita 5-jo Nishi 3, 4-chome,  
Chuo-ku, Sapporo  
Sapporo APIA Fashion Walk B1F  
011-807-9915  
info@tomioaka-group.co.jp  
<http://www.happytree.co.jp/>

53

## ALPHAICON(Icons Inc.)

Kita 2-jo Nishi 27-chome 2-26 1F,  
Chuo-ku, Sapporo  
011-252-7568  
sapporostore@alphaicon.com  
<https://alphaicon.com>

54

## Word M Corp

Kita 15-jo Higashi 18-chome 2-17,  
Higashi-ku, Sapporo  
011-789-8880  
moto@wordm.com  
<http://www.wordm.com/>  
[Yamauchi Vyle Processing Co., Ltd.]  
<http://www.yvp.co.jp/>

55

## Kuroda Herb Nouen Hokkaido

Oyachi-Higashi 3-chome 1-25-41,  
Atsubetsu-ku, Sapporo  
090-1385-2433  
[Model garden and farm]  
Nibetsu 361-2, Kitahiroshima  
chives@ac.auone-net.jp  
<http://herb-carpet.com/>

56

## Ishida Bookbinding Co., Ltd.

Hassamu 16-jo 14-chome 3-31,  
Nishi-ku, Sapporo  
011-661-5670  
booco@ishidaseihon.com  
<https://l-bb.co.jp/booco/>

58

## Tsumiki Record

tsumikirecord@gmail.com  
<http://www.tsumikirecord.jp/>