

Sightseeing Etiquette

Welcome to Sapporo! Here are a few tips on etiquette, to ensure our visitors fully enjoy sightseeing in Sapporo (for details on guest house rules and terms of conditions, please consult with each individual facility). On the back you will find emergency contact numbers, tourist information and information on evacuation in the event of a natural disaster.

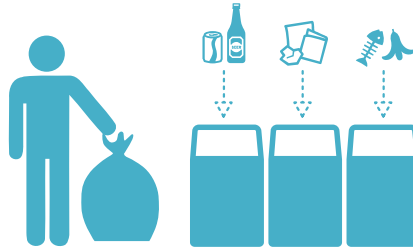
Keep your voice down

Speaking in loud voices, playing musical instruments, and the sound of footsteps on the floor can be noisier than you think. Please be mindful of others especially early in the morning and late at night.



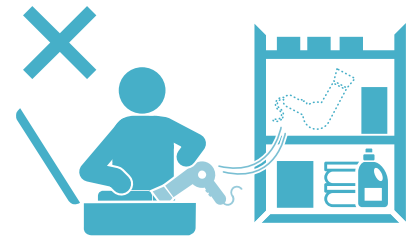
Abide by rules regarding garbage disposal.

The city of Sapporo has rules concerning garbage disposal (such as separating trash). Be sure to separate and dispose of your trash according to the explanations given at the guest house at which you are staying.



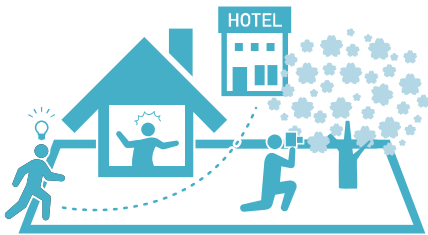
Do not take home fixtures or amenities

Taking home fixtures or amenities from guest houses or shops without permission is considered a crime. If you are unsure whether or not something can be taken home, please ask the shop or guest house staff.



Do not trespass on private property

Though you may not mean any harm by "taking a shortcut," or entering someone's property to get a closer look at the "building or yard," the owner of the house may think you are a trespasser and become alarmed.



Refrain from posting things on social media without permission

Please refrain from posting pictures, videos and the like of locals you encounter on social media without permission. Feel free to photograph places and items where permitted, and post on social media to spread the charm of Sapporo.



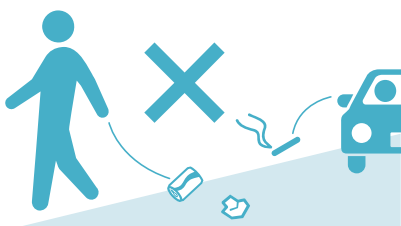
Smoke in designated areas.

Please refrain from smoking on the street or other areas unequipped with ash trays. As for eateries, some are smoke-free zones, and some are separated into smoking and non-smoking zones.



Do not litter cigarette butts or trash

The city of Sapporo strives to promote beauty. Please show your cooperation by disposing of cigarettes and trash in designated areas.



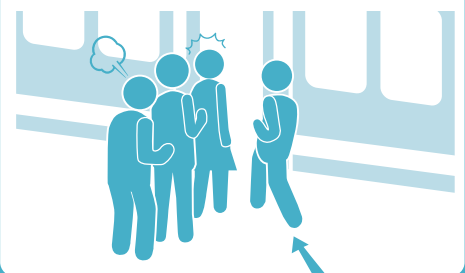
Sidewalk Etiquette

Are you absorbed in conversation or sightseeing with your posse? This can lead to obstruction of other pedestrians and vehicles, so be mindful of others and try not to spread out. Share the sidewalk, and keep the flow easy for everyone.



Do not cut in line

Remember, you are not the only one in a hurry at ticket counters or subway wickets. Wait your turn with a calm attitude.



Emergency Inquiries

POLICE



Numbers to Call

110

FIRE DEPARTMENT



Numbers to Call

119

INJURY or SUDDEN ILLNESS



●Hotline and Hospitals that Respond to Emergencies During the Night and on Holidays.

Hotline for Sudden Illness or Injury

Emergency Relief Center Sapporo

[Lines are open] 24-Hours [Holidays] Open all year

#7119

*Please call here if you cannot get through on the line shown on the left.
011-272-7119

Hospitals Accepting Patients During the Night and on Holidays.

Sapporo Higashi Tokushukai Hospital

011-722-1110

[Hospital Hours] Weekdays 5:00 PM - 9:00 AM Sat, Sun and holidays: 9:00 PM - 9:00 AM [Address] Kita 33-jo Higashi 14-chome, Higashi-ku, Sapporo

*Please call the hospital before you go.

Internal Medicine, Pediatrics, Otolaryngology, Ophthalmology **Sapporo Medical Association**

Nighttime Emergency Room (WEST19)

011-641-4316

[Hospital Hours] Internal Medicine, Pediatrics: 7:00 PM - 7:00 AM Otolaryngology, Ophthalmology: 7:00 PM - 11:00 PM [Holidays] Open all year [Address] WEST 19 1F Odori Nishi 19-chome, Chuo-ku, Sapporo

*Please use this facility if you are able to communicate in Japanese.

Dental **Sapporo Dental Association**

Oral Medical Center

011-511-7774

[Hospital Hours] 7:00 PM - 11:00 PM [Holidays] Open all year [Address] Sapporo Dental Association Bldg. 1F Minami 7 Jo Nishi 10-chome, Chuo-ku, Sapporo

*Please visit this facility with someone who can communicate in Japanese.

●Call here for any problems you encounter during your travels.

Sapporo City Call Center

011-222-4894



[Lines are open] 8:00-21:00 [Holidays] Open all year [E-mail] info4894@city.sapporo.jp

Evacuation In the Event of Natural Disaster During Winter Season

In the event of a natural disaster such as an earthquake, remain calm and secure your safety.

During the winter, beware of the following:

- During the winter, the temperature in Sapporo often drops below minus 10°C. When evacuating, be sure to grab your coat and gloves to stay warm.
- Be sure to turn off the stove before evacuating.
- Roads may be blocked by snow. Be sure to take wide roads.
- Lifelines such as water, gas and electric can be suspended.

Disaster Pocket Guide

Everything you need to know in the event of a disaster is summarized on one sheet.



Access the information from this QR Code▶



Tourist Information



Official Tourism Website for Sapporo

Welcome to **SAPPORO**