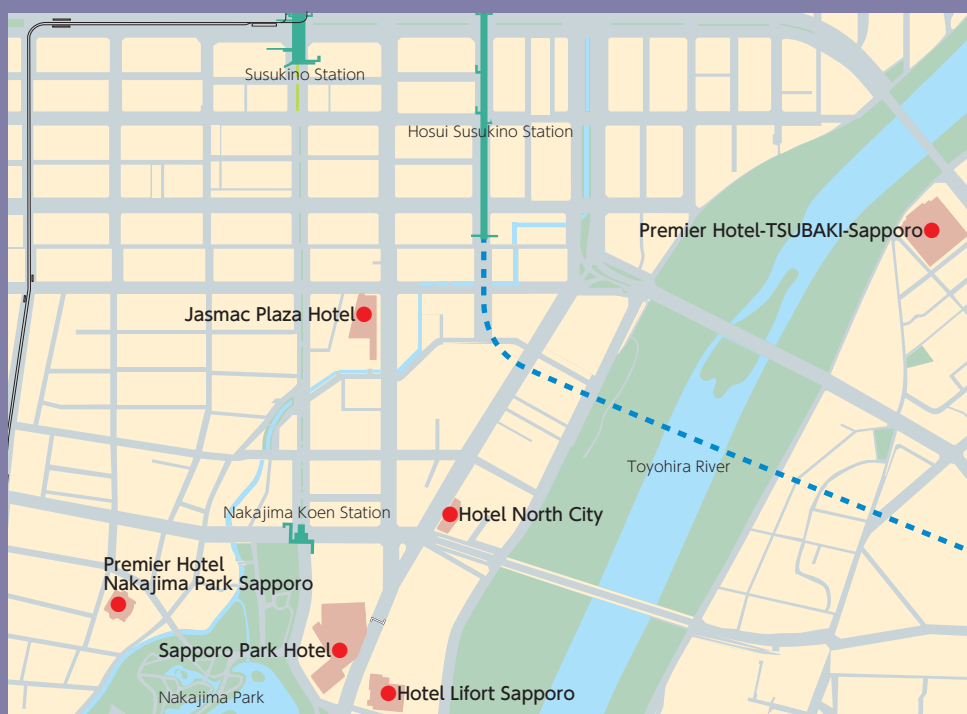


Central Part South Area

| | |
|--|----|
| Sapporo Park Hotel | 41 |
| Premier Hotel-TSUBAKI-Sapporo ... | 42 |
| Jasmac Plaza Hotel | 43 |
| Premier Hotel Nakajima Park Sapporo | 44 |
| Hotel North City | 45 |
| Hotel Lifort Sapporo | 46 |



Sapporo Park Hotel



- Address...1-1, Minami 10 Nishi 3, Chuo-ku, Sapporo
- Tel...+81-11-511-3137 (Banquet reservations)
- Fax...+81-11-531-8514 (Conventions)
+81-11-531-8522 (Hotel accommodation)
- URL...<http://www.park1964.com/>
- E-mail...enyosph@granvista.co.jp
- Access
- [Subway] One foot from Nakajima Koen Station Exit 3 on the Nanboku Line.
- [Taxi] 10 mins. ride from Sapporo JR Station
- Parking
- 220 spaces, with fee: 420 yen/hour (tax included)

Convention Rooms

| Name | Area (m ²) | Ceiling | Floor load | Dinner (people) | Buffet (people) | School (people) | Theater (people) | Basic rate (¥) |
|-------------------------|------------------------|---------|------------|-----------------|-----------------|-----------------|------------------|----------------|
| ● Park Hall [3F] | 1,165 | 4.8m | | 1,000 | 1,500 | 1,000 | 2,000 | (2,600,000) |
| ● Emerald [3F] | 449 | 4.1m | | 270 | 350 | 270 | 500 | (1,100,000) |
| ● The Terrace Room [1F] | 314 | 8.0m | | 160 | 200 | 150 | 250 | (1,250,000) |
| ● Takasago [3F] | 103 | 2.4m | | 70 | 80 | 60 | 90 | (300,000) |
| ● Seiryu [4F] | 70 | 2.4m | | 40 | 60 | | | (200,000) |
| ● Park Plaza [B2] | 2,345 | 3.4 m | | | | 1,200 | 2,500 | (2,000,000) |
| ● Pearl Room [2F] | 215 | 2.5m | | 120 | 150 | 120 | 150 | (450,000) |
| ● Emina [1F] | 109 | 3.6m | | 56 | 80 | 50 | 84 | (450,000) |

Basic charges apply between the hours 9:00~21:00. Tax and 10% service charged separately.
For figures in parentheses, please see details at right. Please contact each facility directly for specific rates.

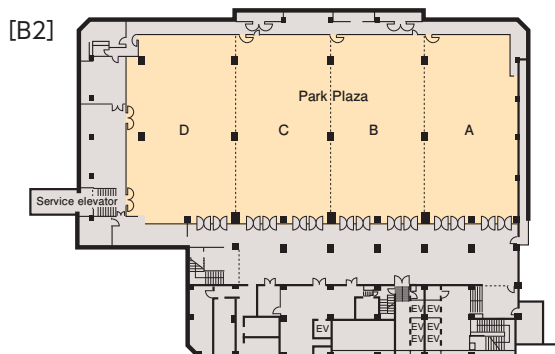
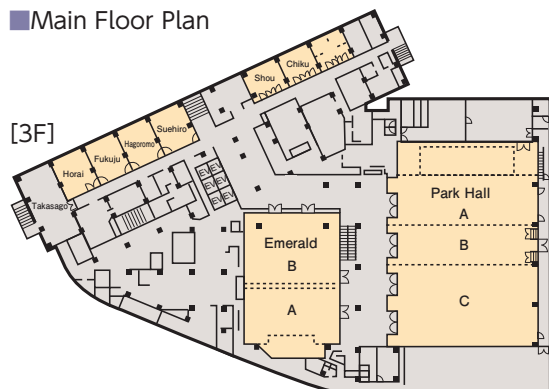
Hotel accommodation

| Guestroom type | No. of rooms | No. of people | Notes |
|----------------|--------------|---------------|-------|
| ● Suite | 1 | 2 | |
| ● Single | 75 | 75 | |
| ● Twin | 136 | 272 | |
| ● Double | 4 | 8 | |
| ● Total | 216 | 357 | |

Restaurants and Bars

| Type | Number | Capacity | Notes |
|----------------|--------|----------|-------|
| ● Restaurant | 4 | 582 | |
| ● Lobby Lounge | 1 | 20 | |
| ● Shop | 2 | | |

Main Floor Plan



Special Features

The hotel is proud of its excellent performance in a number of international conventions and provides various banquet halls ranging from one of the largest in the city to smaller halls which serve gatherings of all styles and sizes.

Facilities/Notes

Other Facilities

Basic charges at left are for the hours 9:00~21:00. Service charge (10%) and consumption tax (8%) will be calculated separately. Tax will be adjusted according to changes in the tax law.

Service

Language Services



Management Support



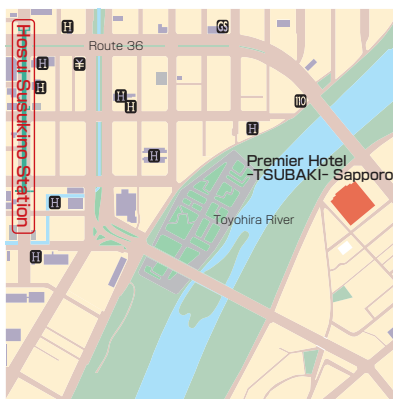
Universal Accessibility



Credit Cards Accepted



Premier Hotel-TSUBAKI-Sapporo



- Address...1-1, Toyohira 4-Jo 1-Chome, Toyohira-ku, Sapporo
- Tel...+81-11-821-1111
- Fax...+81-11-842-6191
- URL...<https://tsubaki.premierhotelgroup.com/sapporo/>
- Access
- [Subway] 15 mins. walk from Susukino Station on the Nanboku Line, 9 mins. walk from Kikusui Station on the Tozai Line, and 13 mins. walk from Hosui Susukino Station on the Toho Line.
- [Bus] Using Chuo Bus from the front of Sapporo JR Station, get off at the Toyohirabashi bus stop.
- [Taxi] About 10~15 mins. ride from Sapporo JR Station, costing about 1,100 yen.
- Parking
- 200 spaces, with fee: 350 yen for the first hour. Overnight parking for hotel guests: 600 yen. Parking for banquet and wedding guests: 200 yen/3 hours. Free parking for restaurant guests, up to 4 hours. Subsequent to these charges, 150 yen/30 mins.

Convention Rooms

| Name | Area (m ²) | Ceiling | Floor load | Dinner (people) | Buffet (people) | School (people) | Theater (people) | Basic rate (¥) |
|--------------|------------------------|---------|------------|-----------------|-----------------|-----------------|------------------|----------------|
| ● Camellia | 1,100 | 4.9m | | 600 | 800 | 600 | 1,400 | |
| ● Lavender | 80 | 3.1m | | 40 | 50 | 36 | 90 | |
| ● Lilac | 68 | 3.1m | | 30 | 40 | 36 | 90 | |
| ● Iris | 80 | 2.8m | | 40 | 50 | 36 | 90 | |
| ● Orchid | 80 | 2.8m | | 40 | 50 | 36 | 90 | |
| ● Chalumiere | 250 | 3m | | 100 | 100 | ※ | ※ | |

Please consult us regarding the asterisks (*). Please contact the facility directly for specific rates.

Hotel accommodation

| Guestroom type | No. of rooms | No. of people | Notes |
|------------------|--------------|-------------------------------|-------|
| ● Japanese-style | 5 | 28 | |
| ● Suite | 13 | 38 | |
| ● Single | | | |
| ● Twin | 304 | 728 (incl. double and triple) | |
| ● Total | 322 | 794 | |

Restaurants and Bars

| Type | Number | Capacity | Notes |
|--------------|--------|----------|-------|
| ● Restaurant | 4 | 478 | |
| ● Bar | 1 | 40 | |
| ● Tea Lounge | 1 | 44 | |
| ● Shop | 1 | | |

Special Features

The Premier Hotel -TSUBAKI- Sapporo of 1,100 square meters can accommodate a maximum of 1,400 guests with a capacity of 600 seats. The spacious facility is equipped with the latest audio and visual systems and can be divided into three spaces, which enables the facility to host a wide variety of events, including wedding receptions, celebratory parties, exhibitions, conferences and dinner shows.

Facilities/Notes

Other Facilities

No facilities

Service

Internet Usage



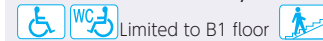
Language Services



Management Support



Universal Accessibility

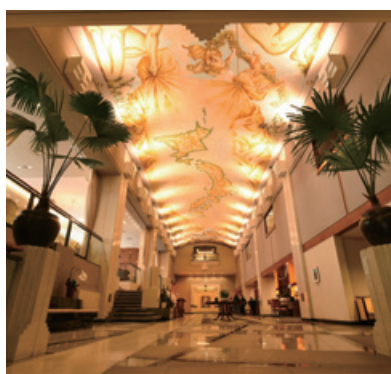
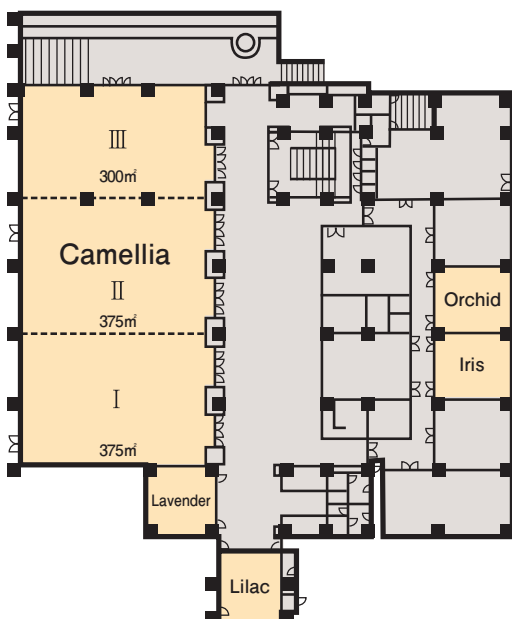


Credit Cards Accepted

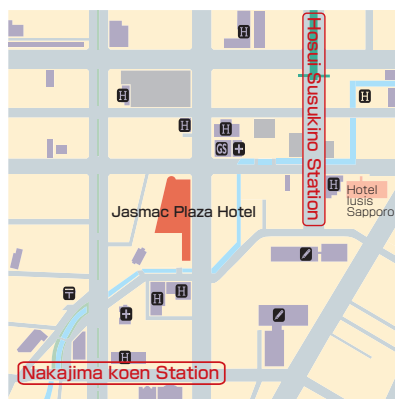


Main Floor Plan

[B1F]



Jasmac Plaza Hotel



- Address...Minami 7 Nishi 3, Chuo-ku, Sapporo
- Tel...+81-11-551-3333(Hotel)
+81-11-513-1077
(Banquet and party reservations)
- Fax...+81-11-552-3330
- URL...<https://www.jasmacplaza.jp>
- E-mail...hotel@jasmacplaza.jp
- Access
- [Subway] 3 mins. walk from Nakajima Koen Station on the Nanboku Line, 2 mins. walk from Hosui Susukino Station on the Toho Line.
- [Bus] Using the Jozankei line, get off at Susukino.
- [Taxi] 10 mins. ride from Sapporo JR Station
- Parking
- 81 spaces, with fee.

Convention Rooms

| Name | Area (m ²) | Ceiling | Floor load | Dinner (people) | Buffet (people) | School (people) | Theater (people) | Basic rate (¥) |
|------------|------------------------|---------|------------|-----------------|-----------------|-----------------|------------------|----------------|
| ● Zanaedu | [5F] 746 | | | 200 | 250 | 100 | 250 | (250,000) |
| ● Gaia | [5F] 155 | | | 80 | 100 | 50 | 50 | (120,000) |
| ● Bright | [6F] 70 | | | 35 | 40 | 40 | 50 | (80,000) |
| ● Joy | [6F] 41 | | | 18 | | | | (40,000) |
| ● Muse | [2F] 70 | | | 36 | 50 | 36 | 48 | (80,000) |
| ● Poseidon | [6F] 232 | | | 130 | 150 | 72 | 120 | (120,000) |

Basic rates are for the hours 11:00~22:00, tax not included. Please inquire about short-time usage, extension of hours, etc. Please contact each facility directly for specific rates.

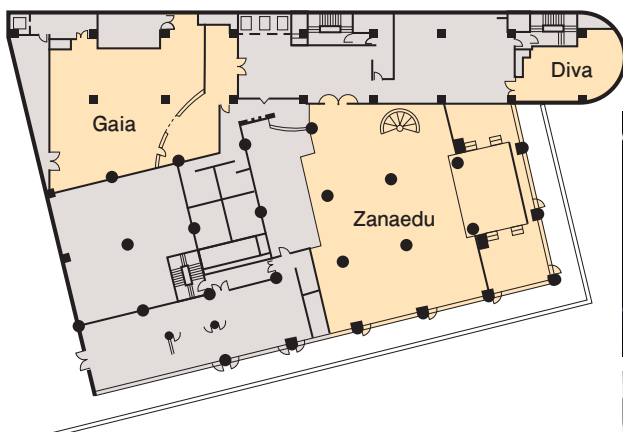
Hotel accommodation

| Guestroom type | No. of rooms | No. of people | Notes |
|------------------|--------------|---------------|-------|
| ● Japanese-style | 16 | 68 | |
| ● Delux | 6 | 12 | |
| ● Single | 32 | 61 | |
| ● Twin | 85 | 215 | |
| ● Double | 14 | 28 | |
| ● Total | 153 | 384 | |

Restaurants and Bars

| Type | Number | Capacity | Notes |
|--------------|--------|----------|---|
| ● Restaurant | 3 | 72~360 | Japanese restaurant, café, eating space attached to hot spring (Japanese, Western, Chinese). Private rooms available in each establishment. |
| ● Bar | | | |
| ● Tea Lounge | 1 | 72 | Café |
| ● Shop | 1 | | Convenience store |

Main Floor Plan [5F]



Special Features

This is a city resort hotel built around a natural hot spring. In addition to accommodations, the hotel provides a full range of services including a massage salon, an esthetic salon and various restaurants. A large choice of banquet facilities can accommodate different needs, such as conventions, parties and other events. Zanaedu, among others, has responded to the demands of a number of professional artists with its high-quality sound and lighting systems. A Japanese-style banquet room can accommodate up to 200 guests.

Facilities/Notes

- Room Notes
- At left are basic rates for conferences and seminars.
- There is a discount available for functions using the same space for both a conference and a banquet, as a set.
- The basic rate for exhibitions is for the hours 11:00~22:00.
- Usage of the space on the previous day for set-up will incur a charge of 50% of the normal charge.
- Exhibition guests can use the hotel hot spring facilities for a special price.
- The convention hall is wheelchair-friendly, and there is a wheelchair-friendly toilet in the hotel lobby on the 1st floor.
- Main Equipment for Loan or Rent
- Projector, screen, plasma TV, whiteboard, DVD player, video deck, bingo game, karaoke (all rooms, separate fee) [Zanaedu] Operation of sound and lighting systems, VTR, sound recording (separate fee)
- Other Facilities
- Natural hot spring ● sauna ● barber and beauty salon ● esthetic salon, relaxation salon ● event hall ● Korean akasuri scrubbing ● massage ● Japanese restaurant ● Japanese banquet room ● café ● convenience store

Service

- Internet Usage
- (partial)
- Language Services
-
- Management Support
-
- Universal Accessibility
-
- Credit Cards Accepted
-

Premier Hotel Nakajima Park Sapporo



- Address...1-21, Minami 10 Nishi 6, Chuo-ku, Sapporo
- Tel...+81-11-561-1000
- Fax...+81-11-521-5522
- URL...<https://premier.premierhotel-group.com/nakajimaparksapporo/>
- E-mail...info-nakajimapark@premierhotelgroup.com

Access

[Subway] 3 mins. walk from Nakajima Koen Station on the Nanboku Line.

[Taxi] 10 mins. ride from Sapporo JR Station

Parking

Available (83 spaces) with fee 350 yen/hour. 200 yen/hour thereafter. Fee for banquet guests: 200 yen/3 hrs. Fee for restaurant guest spending 3,000 yen or more: 200 yen/3 hrs. Overnight guests 1,000yen/night

Convention Rooms

| Name | Area (m ²) | Ceiling | Floor load | Dinner (people) | Buffet (people) | School (people) | Theater (people) | Basic rate (¥) |
|-----------|------------------------|---------|------------|-----------------|-----------------|-----------------|------------------|----------------|
| ●Soleil | [2F] 291 | | | 180 | 200 | 170 | 250 | 528,000 |
| ●Lumiere | [3F] 220 | | | 100 | 120 | 100 | 120 | 396,000 |
| ●Montagne | [2F] 53 | | | 30 | 40 | 30 | 40 | 105,600 |
| ●Fontaine | [2F] 53 | | | 30 | 40 | 30 | 40 | 105,600 |
| ●Etoile | [3F] 82 | | | 40 | 50 | 45 | 50 | 176,000 |

Basic rates are for 8 hours' usage, tax not included. Please contact each facility directly for specific rates.

Hotel accommodation

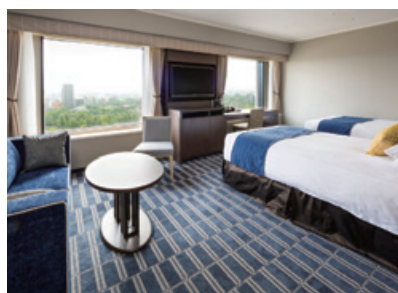
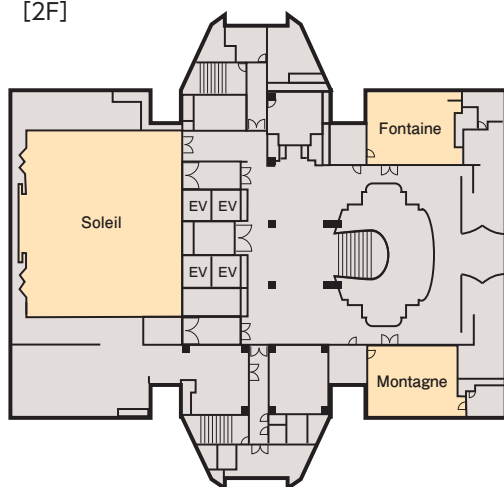
| Guestroom type | No. of rooms | No. of people | Notes |
|----------------|--------------|---------------|-------|
| ●Premier | 8 | 16 | |
| ●Suite | 4 | 10 | |
| ●Single | 21 | 21 | |
| ●Twin | 164 | 328 | |
| ●Double | 24 | 48 | |
| ●Family | 7 | 28 | |
| ●Total | 228 | 451 | |

Restaurants and Bars

| Type | Number | Capacity | Notes |
|-------------|--------|----------|-------|
| ●Restaurant | 3 | 166 | |
| ●Bar | 1 | 18 | |
| ●Tea Lounge | 1 | 58 | |

Main Floor Plan

[2F]



Special Features

Next to the lush green of the spacious Nakajima Park, this Next to the lush greenery of the spacious Nakajima Park, this romantic new modern urban hotel is surrounded by nature. Guests can enjoy birdsongs and natural beauty while staying in the heart of Sapporo. Guests can enjoy birdsong and natural beauty while staying in the heart of Sapporo. Perfectly located for both business and sightseeing, the hotel is just 3 minutes' walk from Nakajima Koen Subway Station, and is within easy walking distance of Susukino entertainment district.

Facilities/Notes

Main Facilities

Screen, video projector, white board, etc. (with fee).

Other Facilities

- Catering service (for 30~200 people).

Service

Internet Usage

High-speed cabled LAN connection available (free of charge). Hotel-wide Wi-Fi coverage.



Management Support

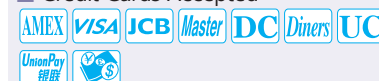


Universal Accessibility

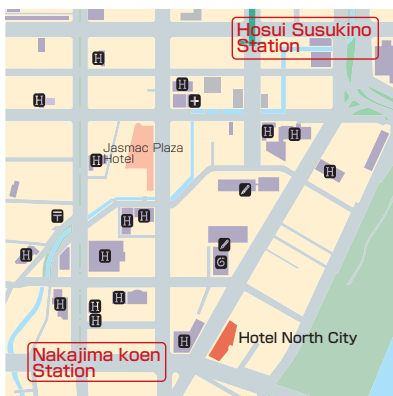
(First floor only)



Credit Cards Accepted



Hotel North City



- Address...Minami 9 Nishi 1, Chuo-ku, Sapporo
- Tel...+81-11-512-9748
- Fax...+81-11-512-9755
- URL...<http://www.northcity.or.jp>
- E-mail...info@northcity.or.jp
- Access
 - [Subway] 2 mins. walk from Nakajima Koen Station on the Nanboku Line.
 - [Taxi] 5 mins. ride from Sapporo JR Station
 - [Highway] 10 mins. drive from Sapporo Kita Interchange (IC) on the Hokkaido (Do-o) Expressway
- Parking
 - 60 spaces, with fee: 300 yen/hour. Overnight parking for hotel guests: 700 yen/night.

Convention Rooms

| Name | Area (m ²) | Ceiling | Floor load | Dinner (people) | Buffet (people) | School (people) | Theater (people) | Basic rate (¥) |
|---------------------------------|------------------------|---------|------------|-----------------|-----------------|-----------------|------------------|----------------|
| ● Kinju | 292 | | | 220 | 240 | 230 | 300 | 68,310 |
| ● Moiwa | 185 | | | 120 | 140 | 144 | 180 | 40,986 |
| ● Ashiribetsu | 103 | | | 70 | | 54 | 100 | 24,948 |
| ● Yotsumine | 22 | | | 12 | | | | 9,504 |
| ● Goten | 36 | | | 20 | | | 40 | 13,662 |
| ● Rera Pirika | about 104 | | | 77 | | | | 26,136 |
| ● Fushiko (Japanese, 20 tatami) | about 33 | | | 22 | | | | 3,564 |
| ● Hamanasu | 28 | | | | | 12 | | 10,692 |

Basic rates are for 8 hours' usage. Tax and service charge included. Please contact each facility directly for specific rates.

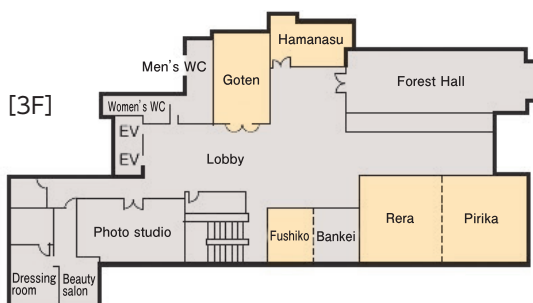
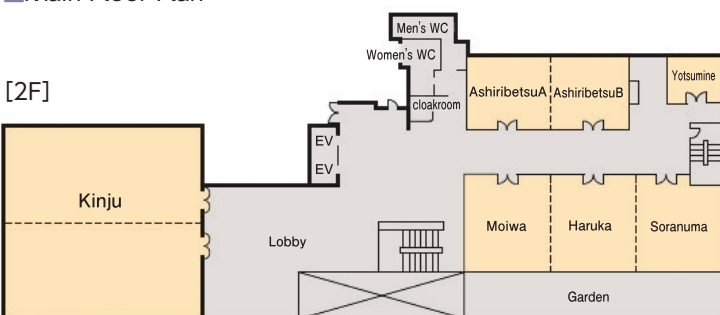
Hotel accommodation

| Guestroom type | No. of rooms | No. of people | Notes |
|----------------|--------------|---|-------|
| ● Suite | 2 | 4 | |
| ● Single | 66 | 66 | |
| ● Twin | 34 | 68 including triple | |
| ● Other | 8 | 19 including rooms for the disabled, and others | |
| ● Total | 110 | 157 | |

Restaurants and Bars

| Type | Number | Capacity | Notes |
|--------------|--------|----------|-------|
| ● Restaurant | 1 | 82 | |

Main Floor Plan



Special Features

This hotel is located near one of Sapporo's primary green spaces, Nakajima Park, and also the Toyohira River, where salmon swim. Perfectly located as a city hotel, it is also within a few minutes' walking distance of entertainment district Susukino.

Facilities/Notes

Main Equipment for Loan or Rent

PC projector

Other Facilities

- Chapel ● Photo studio ● Dressing room
- Beauty salon

Service

Internet Usage



Management Support



Universal Accessibility



Credit Cards Accepted



Hotel Lifort Sapporo



●Address...Minami 10 Nishi 1, Chuo-ku, Sapporo

●Tel...+81-11-521-5211

●Fax...+81-11-521-5215

●URL...<https://hotel-lifort-sapporo.jp>

●E-mail...hanbai@hotel-lifort-sapporo.jp

●Access

[Subway] 3 mins. walk from Nakajima Koen Station exit 1, on the Nanboku Line.

[Bus] Use Chuo Bus stop Nakajima Koen Mae

[Taxi] 10 mins. ride from Sapporo JR Station

●Parking

150 spaces, with fee: 100 yen/hour for conference and banquet guests. Overnight parking for guests, 500 yen/night (14:00~11:00 a.m. the next day)

Convention Rooms

| Name | Area (m ²) | Ceiling | Floor load | Dinner (people) | Buffet (people) | School (people) | Theater (people) | Basic rate (¥) |
|-----------------------------------|------------------------|---------|------------|-----------------|-----------------|-----------------|------------------|----------------|
| ●Lifort Hall | [2F] 877 | 7 | | 600 | 900 | 700 | 1,000 | 198,000 |
| ●Banquet Room Animato | [4F] 240 | 3.4 | | 160 | 180 | 180 | 250 | 52,800 |
| ●Banquet Room Grave | [4F] 125 | 3.4 | | 70 | 80 | 80 | 100 | 33,000 |
| ●Japanese-style Banquet Room Aogi | [3F] 113 | 2.7 | | 70 | | | | 26,500 |
| ●Sky Hall Sala | [17F] 170 | 4.2 | | 80 | 80 | | | 39,600 |

Basic rates are for 3 hours' usage, tax and service charge not included. Please contact each facility directly for specific rates.

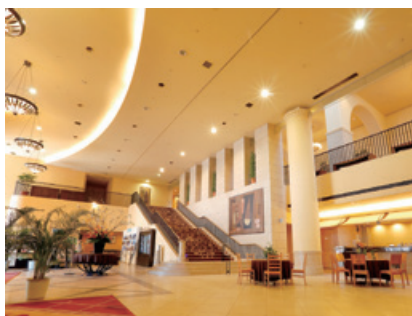
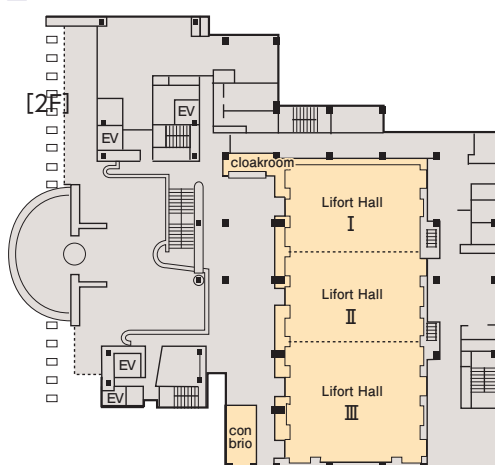
Hotel accommodation

| Guestroom type | No. of rooms | No. of people | Notes |
|-----------------|--------------|---------------|--|
| ●Japanese-style | 5 | 31 | 2 rooms of 21-tatami size, 2 rooms of 12-tatami size, 1 room of 8-tatami size. |
| ●Suite | | | |
| ●Single | 121 | 121 | |
| ●Twin | 74 | 148 | |
| ●Other | 10 | 28 | Large twin, Comfort room, etc. |
| ●Total | 210 | 328 | |

Restaurants and Bars

| Type | Number | Capacity | Notes |
|-------------|--------|----------|-------|
| ●Restaurant | 1 | 106 | |
| ●Bar | | | |
| ●Tea Lounge | | | |
| ●Shop | 1 | | |

Main Floor Plan



Special Features

The hotel, surrounded by Nakajima Park and the Toyohira River, offers a quiet and calm environment where guests can enjoy the four seasons, with cherry blossoms in the spring, deep green in the summer, and brightly colored leaves in the autumn. Nakajima Park is home to the Hokkaido Museum of Literature, "Kitara" Concert Hall and other facilities. The hotel is just a three-minute walk from Nakajima Koen Subway Station.

Facilities/Notes

Room Notes

Rates at left are for 3 hours' usage (tax and service charge not included).

Main Facilities

[Lifort Hall] Lighting and sound systems, projector, outlets (parallel outlets: 20A/ 2 circuits; parallel/cross outlets: 20A/ 6 circuits; special electric outlets: 50A/ 3 circuits), motorized stage rigging (Hall I: 1 baton 7m in length; Hall II: 2 batons 9m in length; Hall III: 1 baton 7m in length), electric screen 3m x 2.3m (150 inch), portable stage 1.22m x 2.44m (height 45cm, 60cm, 75cm, 90cm).

Other Facilities

- Beauty salon ●Dressing room ●Chapel
- Shinzen wedding ceremony room
- No steps in front of main entrance

Service

Internet Usage



Universal Accessibility



Credit Cards Accepted

