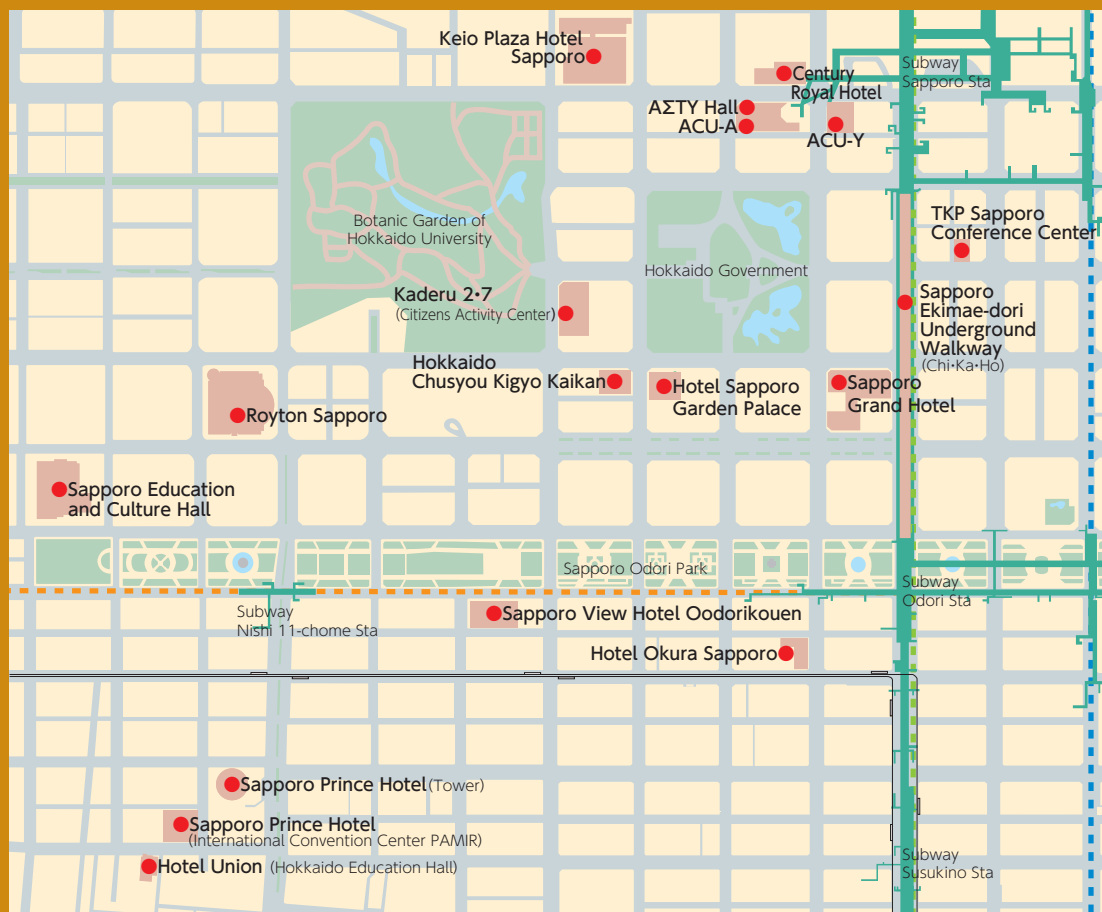
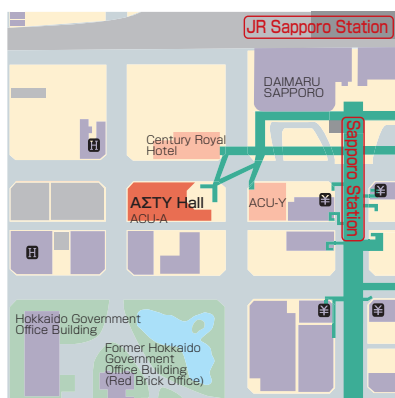


# Central Part West Area

AΣTY Hall.....	10
Kaderu 2・7 (Citizens Activity Center) .....	11
Keio Plaza Hotel Sapporo .....	12
Hotel Sapporo Garden Palace .....	13
Sapporo Grand Hotel .....	14
Sapporo View Hotel Oodorikouen ..	15
Sapporo Education and Culture Hall .....	16
Sapporo Prince Hotel.....	17
Century Royal Hotel .....	18
Sapporo Ekimae-dori Underground Walkway (Chi・Ka・Ho) ...	19
Hotel Union (Hokkaido Education Hall) ..	20
Hokkaido Chusyou Kigyo Kaikan .	21
Hotel Okura Sapporo .....	22
Royton Sapporo .....	23
TKP Sapporo Conference Center ....	24
Advanced Center for Universities (ACU-A) .....	25
Advanced Center for Universities (ACU-Y) .....	26





- Address...Asty45 Bldg., Kita 4 Nishi 5, Chuo-ku, Sapporo
- Tel...+81-11-205-5630
- Fax...+81-11-242-4107
- Access
  - [Subway] 3 mins. walk from Sapporo Subway Station on the Nanboku Line.
  - [JR] 5 mins. walk from Sapporo JR Station west ticket gate
- Parking
  - 70 spaces, with fee: 400 yen/hour

## Convention Rooms

Name	Area (m <sup>2</sup> )	Ceiling	Floor load	Dinner (people)	Buffet (people)	School (people)	Theater (people)
● AΣTY Hall (A Hall) [4F]	432	3.05m				200	300
● AΣTY Hall (B Hall) [4F]	270	3.05m				100	150

Please contact each facility directly for specific rates.

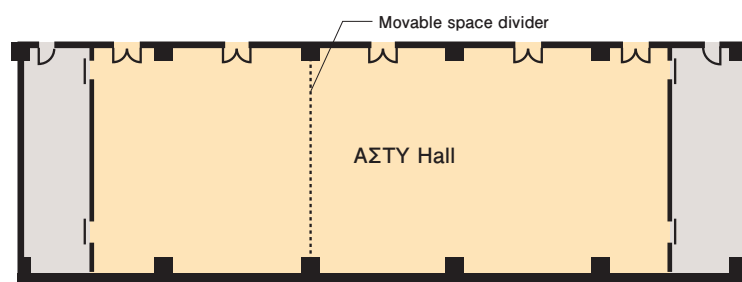
## Hotel accommodation

Guestroom type	No. of rooms	No. of people	Notes
No accommodation facilities			

## Restaurants and Bars

Type	Number	Capacity	Notes
● Restaurant			
● Bar			
● Tea Lounge			
● Shop			Food area and shopping mall located on the 1st floor and basement floor.

## Main Floor Plan [4F]



## Special Features

Direct connection to the Sapporo Station underground street Apia. Very good ease of access.

## Facilities/Notes

### Room Notes

Usage fee estimate will be provided based on the number of hours in use, for 4th floor Hall A/B, except for exhibitions. 4th floor Hall A (432m<sup>2</sup>) can be used as Hall B (270m<sup>2</sup>) with the use of the space dividing wall.

### Main Facilities

4th floor Hall A/B features a spotlight, and fluorescent lights have been added. When Hall A is rented (432m<sup>2</sup>), the movable dividing wall can be used at any of four possible locations, as required.

## Service

### Universal Accessibility





- Address...Kita 2 Nishi 7, Chuo-ku, Sapporo
- Tel...+81-11-204-5100
- Fax...+81-11-271-9827
- URL...<http://homepage.kaderu27.or.jp/>
- E-mail...[info@kaderu27.or.jp](mailto:info@kaderu27.or.jp)

## ● Access

[Public Underground Walkway] 4 mins. walk from Exit 1  
[Subway] 9mins. walk from Sapporo JR Station exit 10.  
[JR] 13 mins. walk from Sapporo JR Station.south exit  
[Bus] 4 mins. walk from Kita 1 Nishi 7 Bus Stop, by JR Bus or Chuo Bus.

[Taxi] 3 mins. ride from Sapporo JR Station.

## ● Parking

Available (max. vehicle height 2.0m) 8:30-21:30 with fee: 300 yen/first hour, and subsequently 150 yen/30 mins. Overnight parking 610 yen (21:30-8:30 a.m. next day)

## ■ Convention Rooms

■ Name	■ Area (m <sup>2</sup> )	■ Ceiling	■ Floor load	■ Dinner (people)	■ Buffet (people)	■ School (people)	■ Theater (people)	■ Basic rate (¥)
● Hall [1F]	1,827						521	(144,300)
● Recreation Training Room [1F]	169					50		23,200
● Large Conference Room [4F]	306					216		38,500
● Exhibition Hall [1F]	313							23,100
● 520 Training Room [5F]	175					108		23,000
● 820 Training Room [8F]	245					144		32,600

Basic rates shown are for full-day usage (9:00~21:00), tax included. See notes at right for further details about figures in parentheses. Please contact each facility directly for specific rates.

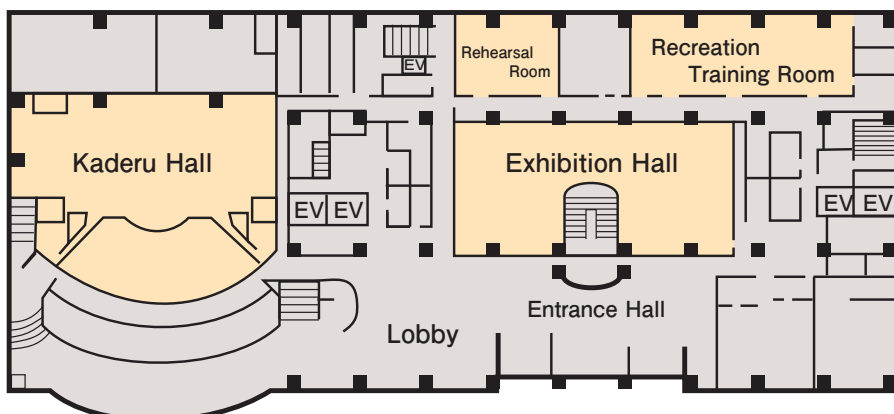
## ■ Hotel accommodation

■ Guestroom type	■ No. of rooms	■ No. of people	■ Notes
No accommodation facilities			

## ■ Restaurants and Bars

■ Type	■ Number	■ Capacity	■ Notes
● Cafe	1	70	

## ■ Main Floor Plan [1F]



## Main Facilities

The facility has 36 rooms, including a hall for 521 people, a rehearsal room, an exhibition hall, a conference room, and training rooms (holding from 15 to 216 people). The hall features 22 wheelchair-friendly seats, and 42 seats with equipment for the hard of hearing.

## Facilities/Notes

### ■ Room Notes

Basic rates shown are for full-day usage between the hours of 9:00 and 21:00. The weekend/holiday rate for the hall is 173,200 yen.

### ■ Other Facilities

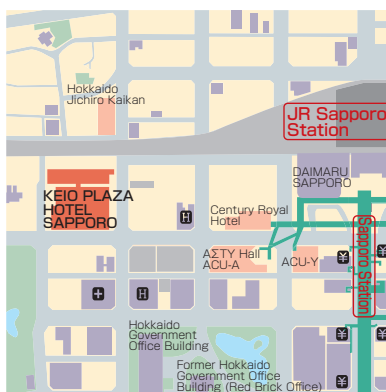
● Lifelong Learning Promotion Center, study space. ● Citizens Activity Center. ● Hokkaido Ainu Center. ● Materials exhibition room. Women's Plaza, Communication Floor. ● Social and welfare groups, etc.

## Service

### ■ Universal Accessibility



# Keio Plaza Hotel Sapporo



- Address...2-1, Kita 5 Nishi 7, Chuo-ku, Sapporo
- Tel...+81-11-271-0111
- Fax...+81-11-271-7943 (Convention)  
+81-11-221-1488 (Hotel accommodation)
- URL...<https://www.keioplazasapporo.co.jp/>
- Access  
[Subway] 5 mins. walk from Sapporo Subway Station on the Nanboku Line.  
[JR] 5 mins. walk from Sapporo JR Station west ticket gate.
- Parking  
300 spaces, with fee: 500 yen/hour. Discount given to users of facilities.

## Convention Rooms

Name	Area (m <sup>2</sup> )	Ceiling	Floor load	Dinner (people)	Buffet (people)	School (people)	Theater (people)	Basic rate (¥)
● Ougi Room [3F]	310	3.5m		200	300	280	350	750,000
● Miyabi Room [3F]	310	3.5m		200	300	280	350	750,000
● Rose Room [2F]	200	3m		100	120	120	150	550,000
● Plaza Hall [B1]	538	8.1m		270	300	250	500	900,000
● Eminence Hall [2F]	1,000	6m		800	1,200	1,000	1,500	2,400,000

Basic rates are for full-day usage. Please contact each facility directly for specific rates.

## Hotel accommodation

Guestroom type	No. of rooms	No. of people	Notes
● Suite	10	24	
● Single	96	96	
● Twin	242	484	
● Double	81	162	
● Triple-Quadruple	65	220	
Total	494	986	

## Restaurants and Bars

Type	Number	Capacity	Notes
● Restaurant	5	470	
● Bar	1	42	
● Tea Lounge	1	81	
● Pancake restaurant	1		

## Special Features

This hotel boasts a large number of guestrooms and banquet rooms, as well as a broad selection of Japanese, Western and Chinese restaurants, bars, and lounges. A health club is available at a special discount for guests. Conveniently located near the Hokkaido Government Building, Hokkaido University, and the city center. The hotel features many suite rooms, and universal rooms are also available. Experienced staff provide impeccable services at any convention. This hotel conforms with Sapporo City's universal accessibility recommendations.

## Facilities/Notes

### Room Notes

Rates at left are for full-day usage. Twenty separate events can be held simultaneously.

### Main Facilities

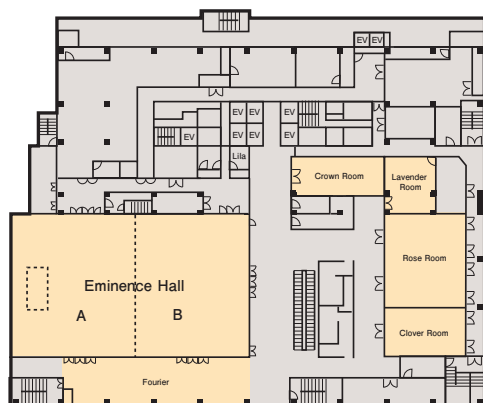
[Plaza Hall] Service elevator available from the B1 floor to the 2nd floor. Width 2,450mm, depth 6,875 mm, ceiling height 2,400 mm, load capacity 4,850 kg. Built-in 300 inch screen. [Eminence Hall] Service elevator available from the B1 floor to the 2nd floor. Width 2,450mm, depth 6,875 mm, ceiling height 2,400 mm, load capacity 4,850 kg. Two simultaneous interpretation booths, stage with rising platform 7,200x3,000x900 mm.

### Other Facilities

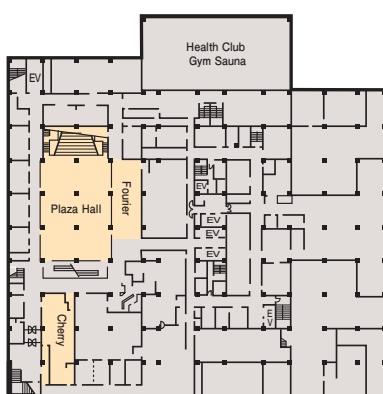
● Chapel. ● Sports and fitness (pool, sauna, machine gym). ● Shopping arcade.

## Main Floor Plan

[2F]



[B1]



## Service

### Internet Usage

Wi-Fi

### Language Services

Chinese (Taiwan)

### Management Support

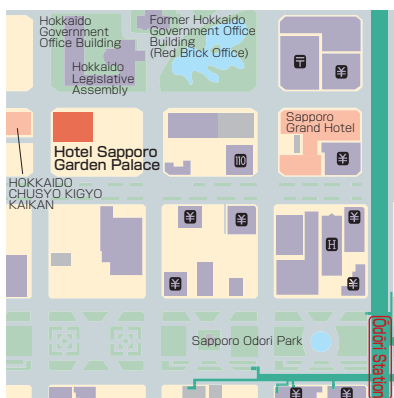
### Universal Accessibility

### Credit Cards Accepted

AMEX VISA JCB Master DC Diners UC TC



# Hotel Sapporo Garden Palace



- Address...3-1, Kita 1 Nishi 6, Chuo-ku, Sapporo
- Tel...+81-11-261-5311
- Fax...+81-11-251-2938
- URL...<https://www.hotelgp-sapporo.com/>
- Access
- [Subway] 5 mins. walk from Odori Station on the Nanboku, Toho and Tozai Lines.
- [JR] 7 mins. walk from Sapporo JR Station south exit
- [Taxi] 3 mins. ride from Sapporo JR Station (650 yen)
- Parking
- 72 spaces, with fee: 400 yen/hour. Special price for event guests: 300 yen for up to 3 hours.

## Convention Rooms

Name	Area (m <sup>2</sup> )	Ceiling	Floor load	Dinner (people)	Buffet (people)	School (people)	Theater (people)	Basic rate (¥)
● Houou	[2F] 741	5.6m		430	800	522	900	680,000
● Heian	[4F] 174	2.6m		100	150	120	190	192,000
● Shinju	[4F] 119	2.6m		60	100	90	100	120,000
● Takasago	[4F] 87	2.6m		40		42	100	96,000
● Hamanasu	[5F] 48	2.6m		30		24		44,000
● Suzuran	[5F] 48	2.6m		30		24		44,000
● Rindo	[5F] 36	2.6m		20		18		44,000
● Ayame	[5F] 48	2.6m		30		24		44,000

Basic rates are for 8 hours' usage, including tax. Please contact each facility directly for specific rates.

## Hotel accommodation

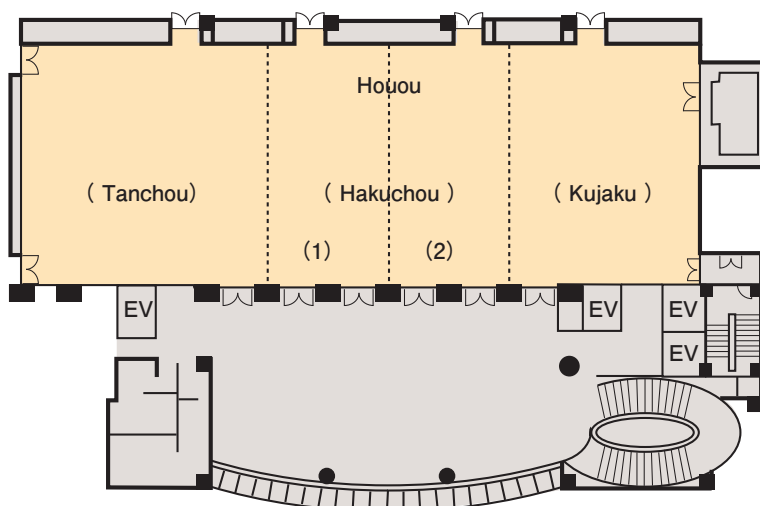
Guestroom type	No. of rooms	No. of people	Notes
● Japanese-style	2	8	
● Suite	3	7	
● Single	87	87	
● Twin	72	144	
● Total	164	246	

## Restaurants and Bars

Type	Number	Capacity	Notes
● Restaurant	5	240	
● Tea Lounge			
● Coin Laundry			



## Main Floor Plan [2F]



## Special Features

Very conveniently located in the Sapporo city center, near the Hokkaido Government Building and Odori Park.

## Facilities/Notes

### Room Notes

The Houou Room can be divided into up to four parts, and the Heian Room into two parts.

### Other Facilities

[Houou] Microphones, sound system.  
[Heian] Microphones, sound system.  
[Shinju] Microphones, sound system.

### Main Equipment for Loan or Rent

OHP, slide projector, screen, TV monitor, video projector, stage, speaker's stand, laser pointer.

## Service

### Internet Usage



### Management Support



### Universal Accessibility



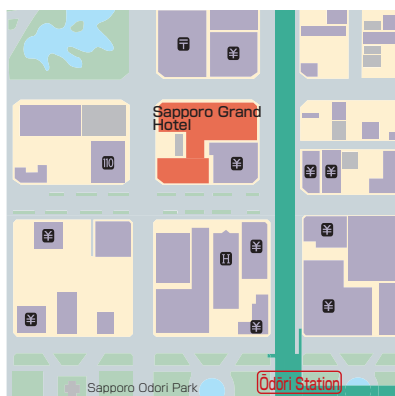
### Credit Cards Accepted



Credit cards accepted for overnight stay and restaurant payment



# Sapporo Grand Hotel



- Address...Kita 1 Nishi 4, Chuo-ku, Sapporo
- Tel...+81-11-261-3311
- Fax...+81-11-231-0388
- URL...<https://www.grand1934.com/>
- Access
  - [Subway] 5 mins. walk from Odori Station on the Nanboku Line.
  - [JR] 8 mins. walk from Sapporo JR Station south exit
- Parking
  - 180 spaces, with fee: 420 yen/hour.

## Convention Rooms

Name	Area (m <sup>2</sup> )	Ceiling	Floor load	Dinner (people)	Buffet (people)	School (people)	Theater (people)	Basic rate (¥)
● Grand Hall	[2F] 760	6m		530	1,000	468	900	(3,006,300)
● Kinshi Room	[2F] 449	5.5m		320	400	288	440	(1,777,600)
● Koyo Room	[3F] 149	2.8m		96	120	72	144	(537,900)
● Ginsen Room	[3F] 283	3m		192	210	144	300	(1,309,000)
● Crystal Hall	[B1] 312	Center: 2.7m Periphery: 2.4m		192	220	104	240	(543,400)

For rates in parentheses, please see details at right. Tax and service charges not included. Please contact each facility directly for specific rates.

## Hotel accommodation

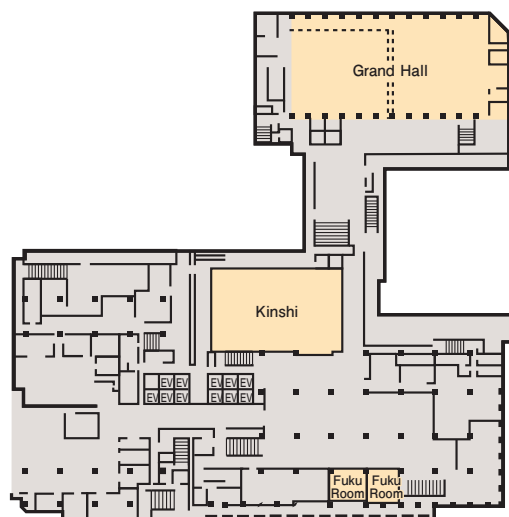
Guestroom type	No. of rooms	No. of people	Notes
● Suite	6	12	
● Single	28	28	
● Twin	339	678	
● Double	123	240	
● Triple	4	12	
● Quad	4	16	
● Total	504	986	



## Restaurants and Bars

Type	Number	Capacity	Notes
● Restaurant	4	514	
● Bar	2	115	
● Tea Lounge	1	108	
● Shop	1		
● Starbucks Coffee		52	

## Main Floor Plan [2F]



## Special Features

Conveniently located, this hotel is a two- to ten-minute walk from all forms of transportation, such as JR train, subway, and bus, and a one- to five-minute walk from government buildings, financial institutions, hospitals, and large and small shops. This was Hokkaido's first Western-style hotel when built in 1934.

## Facilities/Notes

### Room Notes

Charges shown are current as of April, 2018. Please contact the hotel for details. Rates shown are for full-day usage (9:00~21:00).

### Other Facilities

- Memorial library.
- Business center.
- Granvista Gallery Sapporo

## Service

### Internet Usage



### Language Services



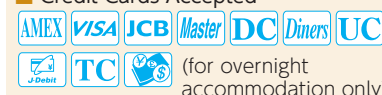
### Management Support



### Universal Accessibility



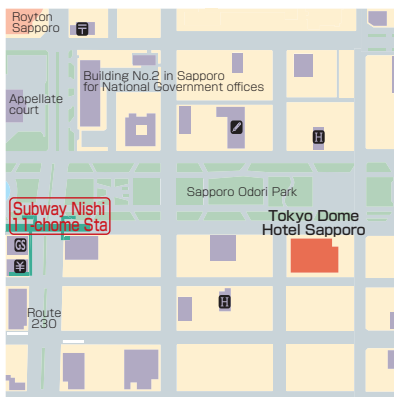
### Credit Cards Accepted



(for overnight accommodation only)



# Sapporo View Hotel Oodorikouen



- Address...1, Odori Nishi 8, Chuo-ku, Sapporo
- Tel...+81-11-261-0111 (Main)
- Fax...+81-11-261-5650
- URL...<https://www.viewhotels.co.jp/sapporo/>
- E-mail...Please inquire through the website.
- Access  
[Subway] 3 mins. walk from Nishi 11-chome Subway Station on the Tozai Line.  
[Taxi] 5 mins. from Sapporo JR Station
- Parking  
56 spaces with charges (Special rates are available for the users of facilities.)

## Convention Rooms

Name	Area (m <sup>2</sup> )	Ceiling	Floor load	Dinner (people)	Buffet (people)	School (people)	Theater (people)	Basic rate (¥)
● Peerage Hall [B2]	800	5.3m		500	700	600	900	1,500,000
● Crest Hall [B2]	290	5.3m		180	230	180	300	600,000
● Sakura Room [4F]	117	3.7m		60	70	60	80	200,000
● Katsura Room [4F]	52	3.7m		30	30	18	40	100,000
● Hinoki Room [4F]	52	2.5m		30	30	21	40	100,000

Basic rates are for all day use. Tax and service charges of 10% are not included.

## Hotel accommodation

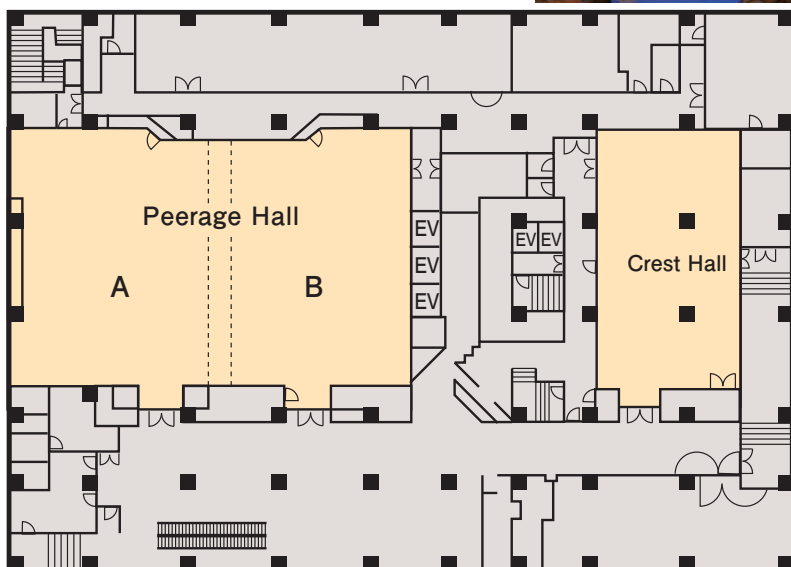
Guestroom type	No. of rooms	No. of people	Notes
● Japanese-style	2	8	
● Suite	2	4	
● Single	78	150	Including 72 rooms with three-quarter beds
● Double	28	56	
● Twin	220	440	Japanese/Western-style rooms, connecting rooms, three beds, four beds, universal rooms
● Other	17	60	
● Total	347	718	

## Restaurants and Bars

Type	Number	Capacity	Notes
● Restaurant	2	242	Private rooms, bars and tea lounges are available.



## Main Floor Plan [B2]



## Special Features

Facing Odori Park in the center of Sapporo, this hotel has excellent access to transportation. It's within walking distance of Odori Subway Station and Nishi juitchome Subway Station.

## Facilities/Notes

### Room Notes

Rates are for all-day usage. The Peerage Hall and the Sakura Room each can be divided into two separate spaces.

## Service

### Internet Usage

✎ Only in the first floor lobby and the guest room, Wi-Fi is available in the first floor lobby, the guest rooms, the second basement floor, and the banquet rooms on the fourth floor.

✎ Undercellar and the fourth floor banquet room are correspondence with tie LAN cable

### Language Services



### Management Support



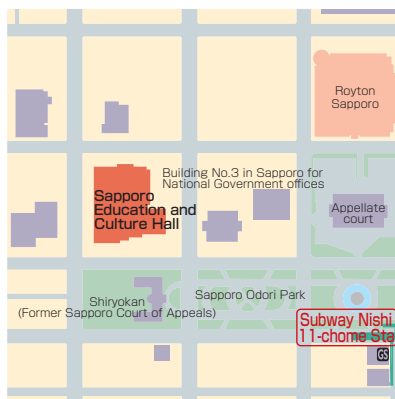
### Universal Accessibility



### Credit Cards Accepted







- Address...Kita 1 Nishi 13, Chuo-ku, Sapporo
- Tel...+81-11-271-5821
- Fax...+81-11-271-1916
- URL...<https://www.kyobun.org>
- E-mail...[inquiry@kyobun.org](mailto:inquiry@kyobun.org)
- Access
  - [Subway] 5 mins. walk from Nishi 11-chome Subway Station on the Tozai Line.  
(Take the Subway Nanboku Line from Sapporo JR Station to Odori Subway Station to transfer to the Tozai Line.)
  - [Bus] 1 mins. walk from Kita 1-jo Nishi 12-chome bus stop where JR Bus and Chuo Bus arrive.
  - [Taxi] 10 mins. from Sapporo JR Station (Approximately 1,000yen)
- Parking
  - 35 spaces in summer, 29 in winter for commercial use only (Visitors are to park in nearby pay parking lots)

## Convention Rooms

Name	Area (m <sup>2</sup> )	Ceiling	Floor load	Dinner (people)	Buffet (people)	School (people)	Theater (people)	Basic rate (¥)
● Large Hall [1~2F]							1,100	(193,900)
● Small Hall [1F]							360	(86,800)
● Training Room 301 [3F]	218					135		20,100
● Training Room 302 [3F]	131.1					72		13,100
● Training Room 303 [3F]	39.5					24		4,000
● Training Room 304 [3F]	40.7					24		4,000
● Training Room 305 [3F]	244.9					156		25,200
● Training Room 401 [4F]	147.4					72		16,100
● Training Room 402 [4F]	123.1					54		12,200
● Training Room 403 [4F]	210.8					84		19,400
● Auditorium [4F]	210.8					156		21,200

Basic rates are for the use from 9am to 9pm. Please see Facilities/Notes for the rates in ( ). Tax included.

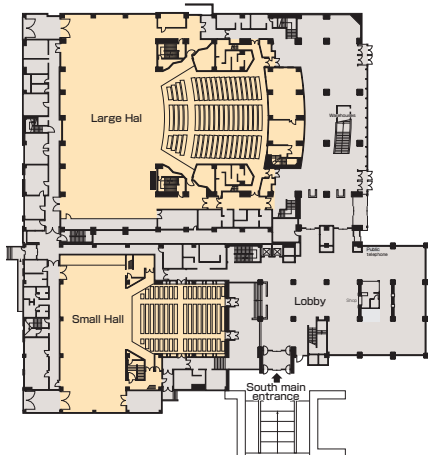
## Hotel accommodation

Guestroom type	No. of rooms	No. of people	Notes
No accommodation facilities.			

## Restaurants and Bars

Type	Number	Capacity	Notes
● Restaurant	1	50	Light meals & drink
● Bar			
● Tea Lounge			
● Shop	1		Theater tickets and business-related goods are available

## Main Floor Plan [1F]



## Special Features

Located in the city center, the hall has good access to government offices, banks, major private companies, accommodations and other facilities, which enables functional scheduling. In addition to large and small halls, there are a number of training rooms that can accommodate 24 to 156 people.

## Facilities/Notes

● **Room Notes**  
Rates shown for Large & Small Halls are for weekday use (use from 9am to 9pm). There are fixed seats in Large & Small Halls and Auditorium. Rates will be increased for events that collect admission fees.

● **Main Facilities**  
[Large Hall] Orchestra pit, runaway, big & small lifts  
[Training Room] Lecture table, white board  
● **Main Equipment for Loan or Rent**  
Various lighting systems, sound system, stage equipment, liquid-crystal projector, OHP, screen, video & DVD player, etc.

● **Other Facilities**  
Nursery room, gallery

## Service

● **Internet Usage**  
Wi-Fi Available (in restaurant)  
There are information outlets in each room. By consulting with the facility staff, making a contract with NTT Higashi Nihon for B-Flet's, construction by our maintenance company and making a contract with a provider, all in advance, internet connection will be available with the minimum amount of in-room wiring. All costs are to be covered by users.

● **Language Services**  
Floor map offers information in English, Korean and Chinese.

● **Management Support**  
Installation service of copy machines, sending & receiving of FAX (bothwith charges)

● **Universal Accessibility( in some areas ) WC**



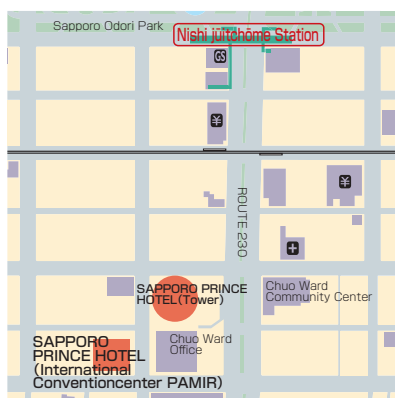
Restroom for physically disabled people and ostomates.



## Sapporo Prince Hotel



Sapporo Prince Hotel (Tower)



- Address...Minami 2 Nishi 11, Chuo-ku, Sapporo
- Tel...+81-11-241-1111
- Fax...+81-11-271-6649 (convention)  
+81-11-231-5994 (hotel accommodation)
- URL...<https://www.princehotels.co.jp/sapporo/>
- Access  
[Subway] 3 mins. walk from Nishi 11-Chome Station on the Tozai Line.  
[JR] 36 mins. train ride from New Chitose Airport to Sapporo JR Station by airport express  
[Bus] Bus service is operated between the Sapporo Prince Hotel and New Chitose Airport Adults 1,030 yen Children 520 yen.  
\*From April 1, 2019: Adults 1,100 yen; Children 550 yen  
[Taxi] One-hour taxi ride from New Chitose Airport (approx. 13,000 yen) . ride from Sapporo JR Station (1,300 yen)
- Parking  
177 spaces, with fee: 400 yen/hour. Parking for convention use: 200 yen/3 hours.

## Convention Rooms

Name	Area (m <sup>2</sup> )	Ceiling	Floor load	Dinner (people)	Buffet (people)	School (people)	Theater (people)	Basic rate (¥)
● 6F/3F Large Banquet Halls	1,000	8.3(6F), 6.3(3F)m		600	1,000	720	1,120	1,930,000
● 6F 3 rooms	750	8.3m		450	750	500	840	1,496,000
● 6F 2 rooms/ 3F 3 rooms	500	8.3(6F)m		300	500	340	560	968,000
● 6F 1 room	250	8.3m		150	250	130	280	484,000
● 3F 5 rooms	825	6.3m		500	800	550	920	1,584,000
● 3F 4 rooms	660	6.3m		400	640	460	740	1,320,000
● 3F 2 rooms	330	6.3m		200	320	200	370	616,000
● 3F 1 room	165	6.3m		100	160	100	180	308,000

Basic rates are shown for 8 hours' usage, tax not included. Please contact each facility directly for specific rates.

## Hotel accommodation

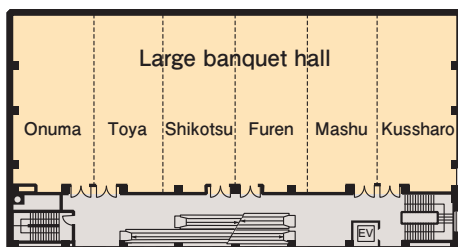
Guestroom type	No. of rooms	No. of people	Notes
● Suite	12	24	6 Royal Suites.
● Twin	477	954	252 Standard twin rooms, 189 Superior twin, 36 Deluxe twin rooms.
● Other	98	196	33 Deluxe double rooms, 63 One-queen rooms, 2 Heartful rooms.
● Total	587	1,174	

## Restaurants and Bars

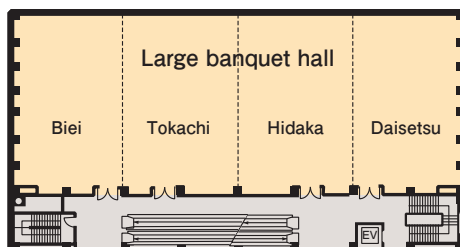
Type	Number	Capacity	Notes
● Restaurant	4	472	(including private rooms)
● Bar	1	80	
● Tea Lounge	1	54	
● Shop	1		

## Main Floor Plan

[3F]



[6F]



Pamir International Hall



Buffet-style banquet

## Special Features

The hotel offers two large banquet halls of 1,000 square meters each, perfectly suited for national conventions as well as international conferences, with simultaneous interpretation booths available. Each of the halls can be partitioned, which enables them to serve various gatherings of all sizes, including parties, dinners, meetings, presentations and exhibitions. Upon request, a catering service of your choice can be provided to suit various budgets.

## Facilities/Notes

## Room Notes

The halls listed to the left are all within Pamir International Hall, a free-standing building. It is also possible to reserve the entire building.

## Main Equipment for Loan or Rent

LCD projector (8000 ANSI, PC-friendly), sound systems, banquet and meeting equipment.

## Other Facilities

● Wedding rooms (sanctuary and chapel), Lounge, Wedding/banquet reception counter, dressing room, waiting room, special beauty salon, photo studio.

## Internet usage

All the group's hotels (including this hotel) and golf courses are supported by an online reservation system. Password-protected Wi-Fi for all banquet halls. Free Wi-Fi is provided in all guestrooms, and can also provide morning wake-up calls in eight different languages (Japanese, English, French, German, Chinese, Korean, Russian and Spanish).

## Service

## Internet Usage

● Coin-operated internet 2 computers/100 yen/ 10mins  
Tower 1st floor lobby  
All rooms equipped with cable LAN and Wi-Fi free of charge

## Language Services

English-, Chinese- and Korean-speaking staff (not available for interpretation at conventions), TV broadcast in English, Chinese and Korean.

## Management Support



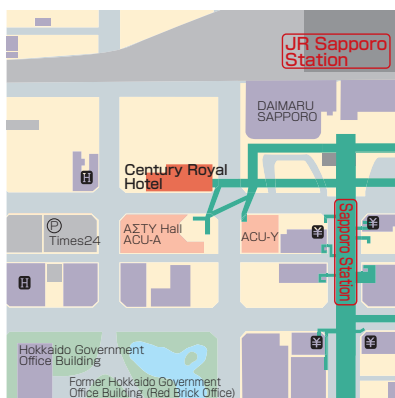
## Universal Accessibility



## Credit Cards Accepted



# Century Royal Hotel



● Address...Kita 5 Nishi 5, Chuo-ku, Sapporo  
● Tel...+81-11-221-2121 (Main)  
+81-11-221-3002 (Sales)

● Fax...+81-11-210-9337 (Sales)

● URL...<http://www.cr-hotel.com>

● E-mail...[banquet@cr-hotel.com](mailto:banquet@cr-hotel.com)

## ● Access

[Subway] 3 mins. walk from Sapporo Subway Station on the Nanboku Line, directly connected by underground concourse.

[JR] 3 mins. walk from Sapporo JR Station, directly connected by underground concourse.

## ● Parking

30 spaces, with fee: 400 yen/hour. Discount for overnight guests (1,300 yen/night). Contract parking also available.

## ■ Convention Rooms

Name	Area (m <sup>2</sup> )	Ceiling	Floor load	Dinner (people)	Buffet (people)	School (people)	Theater (people)	Basic rate (¥)
● Grace [20F]	303	2.9m		200	250	250	450	143,000
● Noble [20F]	223	2.9m		140	180	160	300	121,000
● Elegance Hall [3F]	188	2.45m		120	150	135	250	88,000
● Luminous Hall [3F]	201	2.45m		100	140	63	132	88,000

Basic rates shown are for 2 hours' usage, tax not included.. Please contact each facility directly for specific rates.

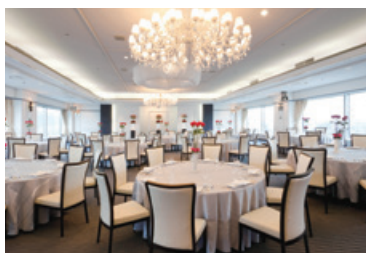
## ■ Hotel accommodation

Guestroom type	No. of rooms	No. of people	Notes
● Suite	2	4	
● Single	43	43	
● Twin	243	486	
● Other	12	24	
● Total	300	557	



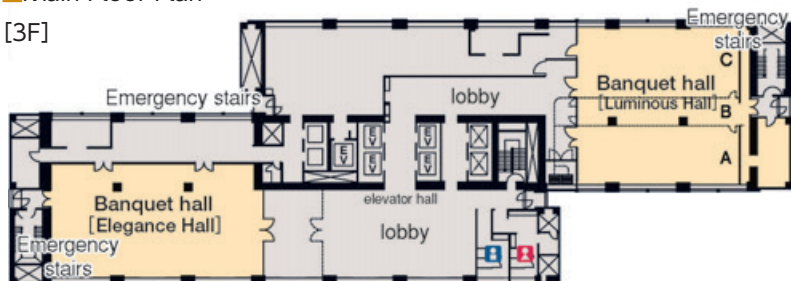
## ■ Restaurants and Bars

Type	Number	Capacity	Notes
● Restaurant	3	268	
● Tea Lounge	1	40	
● Convenience store	1		

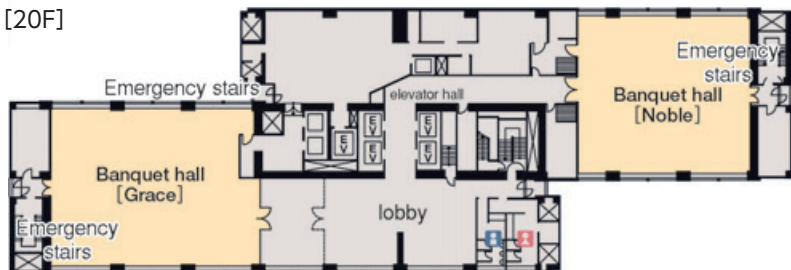


## ■ Main Floor Plan

[3F]



[20F]



## Special Features

This perfectly located hotel is a three-minute walk along an underground concourse directly connected to Sapporo JR and subway stations. The hotel offers a choice of four banquet halls on the 20th floor and 3rd floor. Guests can enjoy beautiful daytime and night views of the city from Grace, the 20th floor hall that was remodeled in August 2017. Luminous on the third floor can be divided into multiple spaces depending on the number of people. The four different-type halls create a pleasant atmosphere at various parties and ceremonies. The 300 guestrooms are equipped with free internet connection (wired LAN and wireless LAN), trouser press, and TVs in all bathrooms.

The restaurants of the hotel include Rondo on the 23rd floor, which is Hokkaido's only rotating sky restaurant with a 360-degree panorama view of the city, Kitanoji, which blends Japanese and Western cuisines, and Yuyo Terrace Sapporo, which receives good reviews in Japan and elsewhere for its breakfast.

## Facilities/Notes

### ■ Room Notes

The Grace and Noble banquet halls are on the 20th floor, with a beautiful view. The Luminous can be partitioned.

### ■ Main Equipment for Loan or Rent

LCD projector, screen, white board, etc.

### ■ Other Facilities

● Bridal chapel ● dressing room ● photo room  
● charging for electric cars

### ■ Other equipments

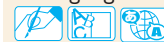
Some Braille signs available on elevators, etc.

## Service

### ■ Internet Usage



### ■ Language Services



Hotel signs, restaurant menus and guest information are available in English. The guestrooms offer two channels of Chinese language TV broadcast.

### ■ Management Support



### ■ Universal Accessibility



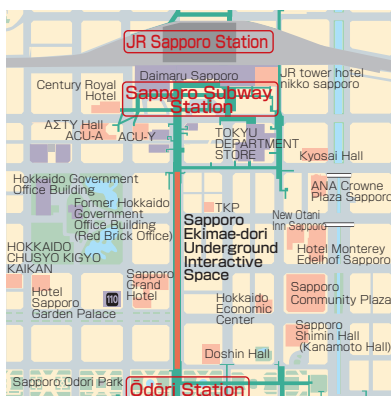
### ■ Credit Cards Accepted



\*There are terms of use for VISA.



# Sapporo Ekimae-dori Underground Walkway (Chi·Ka·Ho)



- Designated administrator... Sapporo Ekimae-dori Urban Development Co., Ltd.
- Address... Sapporo Ekimae Fujii Bldg. 8F, Kita 3-jo Nishi 3-chôme 1, Chuo-ku, Sapporo (contact)
- Tel... +81-11-221-6406
- Fax... +81-11-210-6408
- URL... <https://www.sapporo-chikamichi.jp/>
- E-mail... [banquet@cr-hotel.com](mailto:banquet@cr-hotel.com)
- Access
  - [Subway] Sapporo and Odori subway stations on the Namboku Line and Odori Subway Station on the Tozai Line
  - [JR] Sapporo JR Station.
- Parking
  - No parking facilities.

## Convention Rooms

Name	Area (m <sup>2</sup> )	Ceiling	Floor load	Dinner (people)	Buffet (people)	School (people)	Theater (people)	Basic rate (¥)
● Kita 3-jo Square (west)	300							150,000
● Kita-Odori Square (east)	130							65,000
● Kita-Odori Square (west)	100							50,000
● Relaxation Space	24							7,200

The basic rates are for 5:45 to 24:30 on weekdays. For the rates for holidays, refer to the Facilities/Notes column. Tax included.

## Hotel accommodation

Guestroom type	No. of rooms	No. of people	Notes
			No accommodation available.

## Restaurants and Bars

Type	Number	Capacity	Notes
			There are no attached eating or drinking establishments.



## Special Features

The Sapporo Ekimae-dori Underground Walkway, which has underground squares, connects JR Sapporo Station and Sapporo Subway Station on the Namboku Line with the Odori area. The 520-m-long walkway connects directly to several buildings along the way, allowing users to move around downtown Sapporo without going above ground.

The underground squares are open spaces along the walkway, so it is impossible to hold closed events there as one might hold in a rental event space in a building. However, the squares are unaffected by weather and have lots of foot traffic throughout the year, with pedestrians from all walks of life using them. The squares are suitable for promotional activities that involve unspecified numbers of people. The Kita 3-jo and Kita-Odori squares are equipped with a video system (separate use fee) and provide spaces where numerous people can gather for an event or a performance. The Relaxation Spaces are too small for performances, but they are not set back from pedestrian traffic, so they easily attract the attention of passers-by. The walkway has more traffic in the snowy winter (approx. 80,000 people/day) than in summer (approx. 50,000 people/day), and it has more traffic on weekdays than on weekends, as the area is a business district.

The squares are often used by companies, administrative bodies and various other groups, as well as by individuals. If they are used by an administrative body for a non-profit project, the usage fees may be reduced depending on the usage.

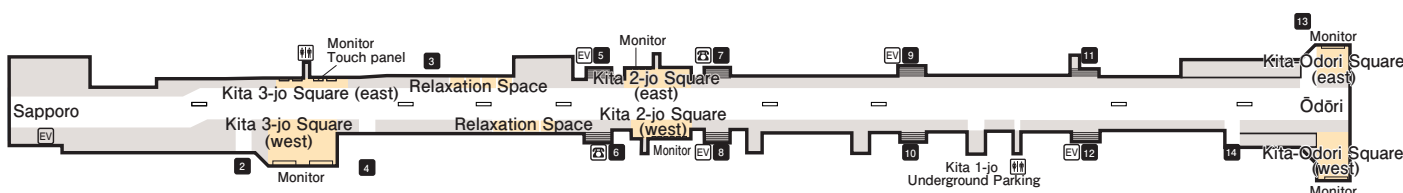
## Facilities/Notes

- Room Notes
  - Use fees on holidays: Kita 3-jo Square (west): 180,000 yen (The use fee for the video system at the Kita 3-jo and Kita-Odori squares is separately charged.) / Kita-Odori Square (east): 78,000 yen / Kita-Odori Square (west): 60,000 yen / Relaxation Space: 10,800 yen
- Main Equipment for Loan or Rent
  - The Kita 3-jo and Kita-Odori squares are equipped with a video system (separate use fee). Panel sets, stacking chairs, spotlights, stages, a sound system and other systems (separate use fees) are available.

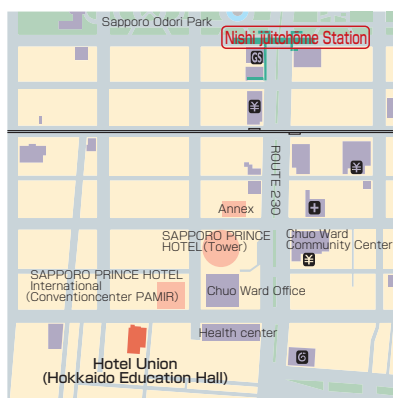
## Service

- Internet Usage
  -
- Universal Accessibility
  - 
  - 
  -

## Main Floor Plan







- Address...Minami 3 Nishi 12, Chuo-ku, Sapporo
- Tel...+81-11-561-6161
- Fax...+81-11-561-1661
- Access  
[Subway] 6 mins. walk from Nishi 11-Chome Station on the Tozai Line.  
[Taxi] 10 mins. ride from Sapporo JR Station
- Parking  
With fee: 200 yen/hour. Free parking up to 2 hours for conference attendees.

## Convention Rooms

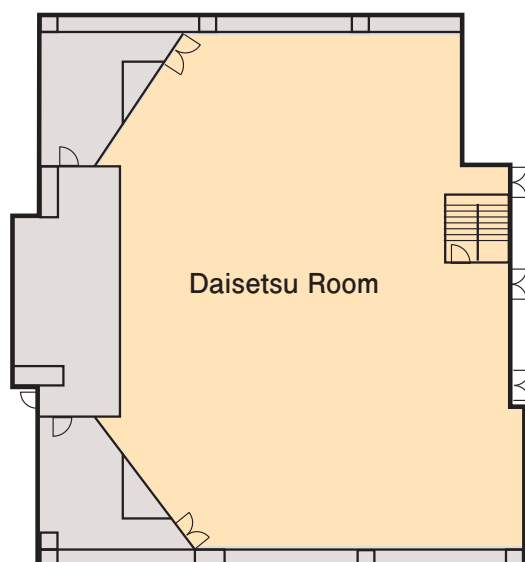
Name	Area (m <sup>2</sup> )	Ceiling	Floor load	Dinner (people)	Buffet (people)	School (people)	Theater (people)	Basic rate (¥)
● Daisetsu	[7F] 330	3.5m		220	350	250	280	(110,000)
● Taiki	[4F] 139	2.6m		70	150	100	120	(64,000)
● Yuki	[4F] 96	2.6m		50	100	80	100	(50,000)

Basic rates shown are for 8 hours' usage, tax not included.. For rates in parentheses, please see further details at right. Please contact each facility directly for specific rates.

## Restaurants and Bars

Type	Number	Capacity	Notes
● Restaurant	1	100	
● Bar			
● Tea Lounge			
● Shop			

## Main Floor Plan [7F]



## Main Facilities

A training facility suitable for small- to medium-sized events. Conveniently located with good access and attractive rates.

## Facilities/Notes

### Room Notes

50% discount for group members.

### Main Facilities

Microphones, blackboard, whiteboard, video, data projector, screen.

## Service

### Universal Accessibility



# Hokkaido Chusyou Kigyo Kaikan



Presto 1·7 Bldg



- Address...2nd Floor Presto 1·7 Bldg., Kita 1 Nishi 7, Chuo-ku, Sapporo
- Tel...+81-11-231-7141
- Fax...+81-11-231-7142
- URL...<http://www.hck-kaikan.com>
- Access
  - [Subway] 8 mins. walk from Sapporo Subway Station on the Nanboku Line, 9 mins. walk from Odori Station.
  - [JR] About 12 mins. walk from Sapporo JR Station
- Parking
  - Parking lots (with fee) are available nearby.

## ■ Convention Rooms (Provided by Hokkaido SME Association~Presto 1·7 Bldg., 2F)

■ Name	■ Area (m <sup>2</sup> )	■ Ceiling	■ Floor load	■ Dinner (people)	■ Buffet (people)	■ School (people)	■ Theater (people)	■ Basic rate (¥)
● Conference Room A	85					63		25,500
● Conference Room B	58					36		17,400
● Conference Room C	58					36		17,400
● Conference Room D	59					36		15,000
● Conference Room E	41					24		15,000
● Conference Room F	89					60		26,700

Basic rates are for the times 9:00~17:00, tax not included.. Rooms can also be rented for just the morning or afternoon periods.  
Please contact each facility directly for specific rates.

## ■ Hotel accommodation

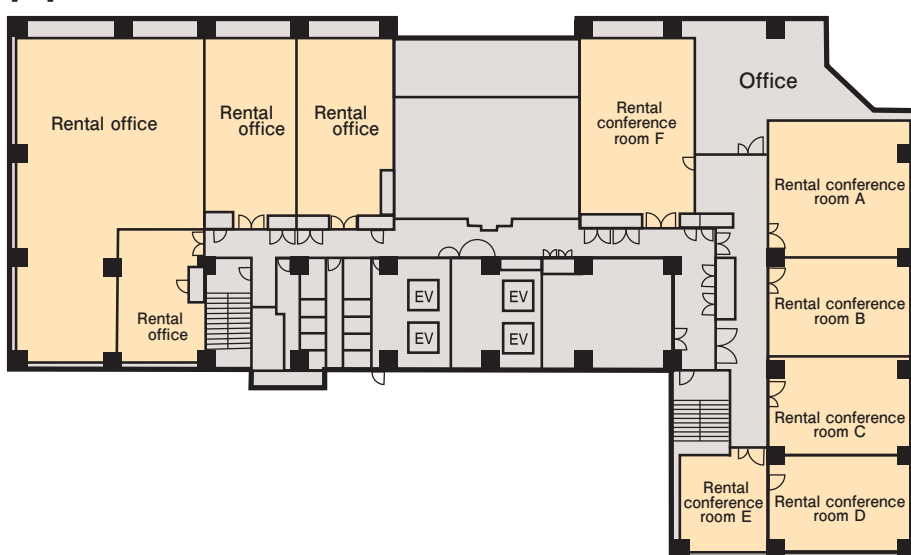
■ Guestroom type	■ No. of rooms	■ No. of people	■ Notes
No accommodation available.			

## ■ Restaurants and Bars

■ Type	■ Number	■ Capacity	■ Notes
There are no attached eating or drinking establishments.			

## ■ Main Floor Plan (Provided by Hokkaido SME Association~Presto 1·7 Bldg., 2F)

[2F]



## Special Features

This facility is in a quiet location near the Hokkaido Government Building, offering a relaxed atmosphere and rental conference rooms for meetings. Conference rooms A through D can be connected to form one large conference room accommodating 180 people.

## Facilities/Notes

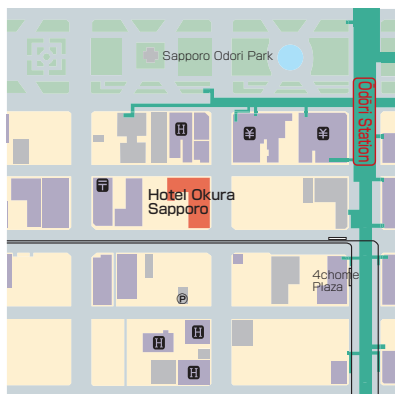
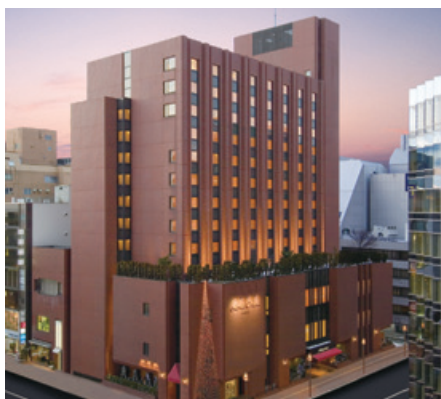
- Room Notes
  - Conference rooms A through E can be connected together.
- Main Facilities(with fee)
  - microphones, projector, screen

## Service

- Universal Accessibility

(Bldg., 1F)

# Hotel Okura Sapporo



- Address...9-1, Minami 1 Nishi 5, Chuo-ku, Sapporo
- Tel...+81-11-221-2333
- Fax...+81-11-221-0819
- URL...<https://www.sapporo-hotelokura.co.jp>
- E-mail...[gmooffice@sapporo.hotelokura.co.jp](mailto:gmooffice@sapporo.hotelokura.co.jp)
- Access
  - [Subway] 1 min. walk from Odori Station.
  - [JR] 15 min. walk from Sapporo JR Station
  - [Taxi] 5 mins. ride from Sapporo JR Station.
- Parking
  - Connected parking area. Discount available for those using the facility.

## Convention Rooms

Name	Area (m <sup>2</sup> )	Ceiling	Floor load	Dinner (people)	Buffet (people)	School (people)	Theater (people)	Basic rate (¥)
● Fontaine [2F]	442	3.6m		250	350	300	450	900,000
● Chelsea [3F]	165	2.8m		100	120	100	150	450,000
● Oak [3F]	58	3.3m		30	30	24	40	135,000
● Maple [3F]	33	3.3m		10		9	20	63,000
● Tribeca [B2]	250	2.8m		120	150	120	180	600,000
● Brooklyn [B2]	48	2.8m		30				135,000
● Hudson [B2]	30	2.8m		10				63,000

Basic rates are for all-day usage, tax not included. Please contact each facility directly for specific rates.

## Hotel accommodation

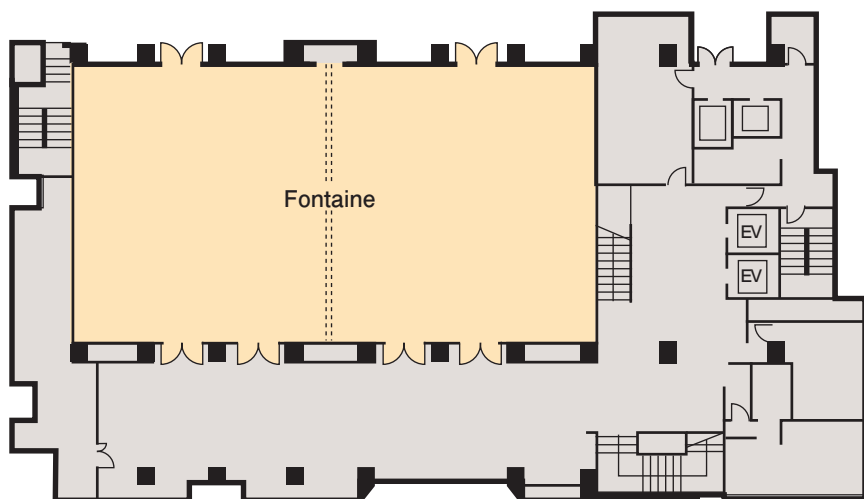
Guestroom type	No. of rooms	No. of people	Notes
● Japanese-style			
● Suite	3	6	
● Single			
● Twin	97	194	
● Other	47	94	double
● Total	147	294	



## Restaurants and Bars

Type	Number	Capacity	Notes
● Restaurant	3	250	Restaurant Continental, Chinese restaurant Toh-Ka-Lin, Japanese restaurant Suginome.
● Bar	1	32	
● Tea Lounge	1	22	
● Shop	2		Accessory boutique, Hokkaido product shop

## Main Floor Plan [2F]



## Special Features

Situated in the Odori area, the center of the city, the hotel has good access to both sightseeing spots and business districts. Guests can easily walk to Odori Park (well-known for the Snow Festival and White Illumination), the Clock Tower and the Susukino entertainment district. With its serene atmosphere, the Hotel Okura welcomes guests in its unique style.

## Facilities/Notes

### Room Notes

[Fontaine] Large screens (200 inch and 170 inch), DLP projector, high-speed optical fiber broadband, Wi-Fi available.

### Other Facilities

Banquet hall, chapel, beauty salon, esthetic salon, wedding dress boutique, photo studio.

## Service

### Internet Usage



### Language Services



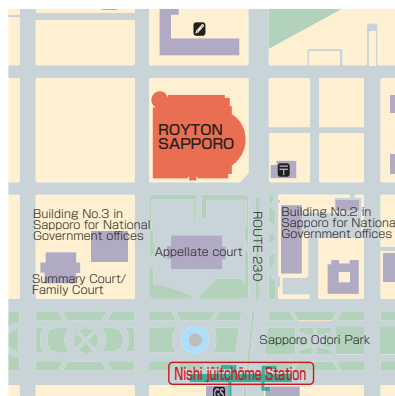
### Universal Accessibility



### Credit Cards Accepted







- Address...Kita 1 Nishi 11, Chuo-ku, Sapporo
- Tel...+81-11-271-2711
- Fax...+81-11-207-3344
- URL...<https://www.daiwaresort.jp/royton/index.html>
- E-mail...royton@daiwaresort.co.jp
- Access
  - [Subway] 3 mins. walk from Nishi 11-Chome Station on the Tozai Line.
  - [Taxi] 5 mins. ride from Sapporo JR Station
- Parking
  - 231 spaces (including front parking area), with fee: 400 yen for first hour, subsequently 200 yen/30 mins.

## Convention Rooms

Name	Area (m <sup>2</sup> )	Ceiling	Floor load	Dinner (people)	Buffet (people)	School (people)	Theater (people)
● Royton Hall [3F]	1,607	8m		1,260	2,000	1,134	2,014
● Empress Hall [2F]	336	5m		216	250	234	300
● Regent Hall [2F]	336	5m		216	250	240	300
● Highness Hall [2F]	301	5m		216	250	195	300

Basic rates are for 8 hours' usage, tax and service charge not included. Please contact each facility directly for specific rates.

## Hotel accommodation

Guestroom type	No. of rooms	No. of people	Notes
● Royal Suite	2(1 non-smoking room)	4	
● Suite	8(4 non-smoking room)	16	
● Exceed Twin	18(9 non-smoking room)	36	
● Exceed double	2(1 non-smoking room)	4	
● Standard Twin	204(143 non-smoking room)	408	
● Standard double	12(9 non-smoking room)	20	
● Large double	12(9 non-smoking room)	24	
● Connecting Room	36(36 non-smoking room)	76	
● Total	294(212 non-smoking room)	588	

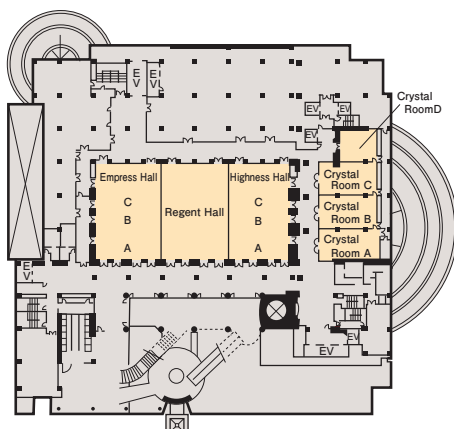
## Restaurants and Bars

Type	Number	Capacity
● Restaurant	3	364
● Bar	1	40
● Shop	1	

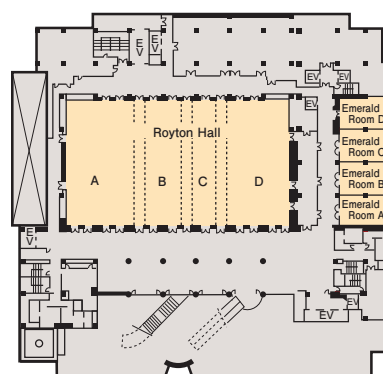


## Main Floor Plan

[2F]



[3F]



## Special Features

This hotel offers a large hall measuring 54 meters in width, 32 meters in depth and 8 meters in height, and three medium-sized halls of 340 square meters each. Two 200-inch video projector screens are provided. Guestrooms can accommodate 584 guests in total.

## Facilities/Notes

### Room Notes

In addition to the rooms listed, there are 8 meeting rooms, and a small banquet room on the 20th floor.

### Other Facilities

● Fitness club (athletic, gym, sauna, 25m pool, Jacuzzi, etc.)

## Service

### Internet Usage

Online homepage; reservations for accommodation can be made by email.

### Language Services



### Management Support



### Universal Accessibility



### Credit Cards Accepted



# TKP Conference Center



- Address...Sapporo Kogure Bldg. 6F/7F,  
Kita 3-jo Nishi 3-chome 1-6,  
Chuo-ku, Sapporo
- Tel...+81-11-252-3165  
(TKP Sapporo Reservation Center)
- Fax...+81-11-233-3835
- URL...<https://www.kashikaigishitsu.net/facilitys/cc-sapporo/>
- Access  
[Subway] A 4-minute walk from Sapporo Station  
on the Namboku Line  
[JR] A 5-minute walk from the South Gate of JR  
Sapporo Station
- Parking  
no parking facilities.  
Please use a neighboring parking space.

## Convention Rooms

Name	Area (m <sup>2</sup> )	Ceiling	Floor load	Dinner (people)	Buffet (people)	School (people)	Theater (people)	Basic rate (¥)
● Conference Room 6A [6F]	176	2.6m	300t/m <sup>2</sup>			165	180	186,400
● Conference Room 6B [6F]	101	2.6m	300t/m <sup>2</sup>			93	100	110,400
● Conference Room 6C [6F]	50	2.6m	300t/m <sup>2</sup>			42	55	53,600
● Conference Room 6D [6F]	19	2.6m	300t/m <sup>2</sup>					34,400
● Conference Room 6E [6F]	22	2.6m	300t/m <sup>2</sup>					36,000
● Conference Room A [7F]	82	2.6m	300t/m <sup>2</sup>			69	87	85,600
● Conference Room 7B [7F]	67	2.6m	300t/m <sup>2</sup>			51	78	72,000
● Conference Room 7C [7F]	65	2.6m	300t/m <sup>2</sup>			51	65	72,000
● Conference Room 7D [7F]	45	2.6m	300t/m <sup>2</sup>			30	45	46,400
● Conference Room 7E [7F]	78	2.6m	300t/m <sup>2</sup>			78	95	93,600

## Hotel accommodation

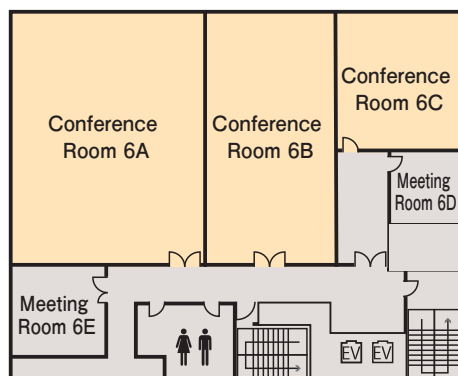
Guestroom type	No. of rooms	No. of people	Notes
No accommodation facilities			

## Restaurants and Bars

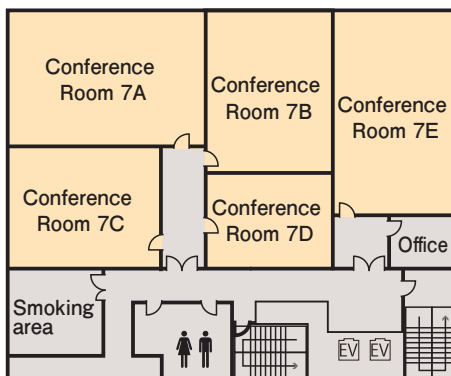
Type	Number	Capacity	Notes
There are no attached eating or drinking establishments.			

## Main Floor Plan

[6F]



[7F]



## Special Features

This facility is a five-minute walk from the South Gate of JR Sapporo Station in the city center, and is also conveniently located for guests travelling from New Chitose Airport. The atmosphere inside the facility is quiet, and a chic hybrid space and white-base bright conference rooms are available. There are 10 small and large rooms, which can accommodate 12 to 180 people.

## Facilities/Notes

### Room Notes

10 conference rooms and automatic vending machines are available.

## Service

### Internet Usage

Optional wired and wireless LANs

### Language Services

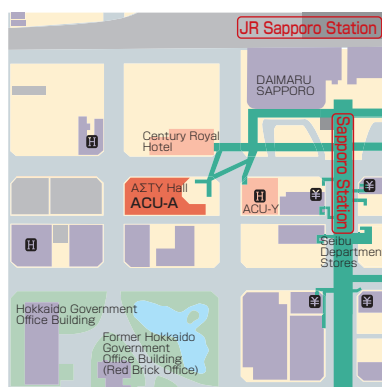


### Management Support



### Credit Cards Accepted





- Address...Asty45 Bldg. 12F and 16F, Kita 4 Nishi 5, Chuo-ku, Sapporo
- Tel...+81-11-272-3838
- Fax...+81-11-272-3278
- URL...<https://www.acu-h.jp/>
- Access
- [Subway] 5 mins. walk from Sapporo Subway Station on the Nanboku and Toho Lines (connected underground).
- [JR] 5 mins. walk from Sapporo JR Station west ticket gate (connected underground)
- Parking
- Available! No special discount for use of this facility.

## Convention Rooms

Name	Area (m <sup>2</sup> )	Ceiling	Dinner (people)	Buffet (people)	School (people)	Theater (people)	Basic rate (¥)
● Large Training room 1614	320				285	320	268,300
● Large Training room 1606	220				150	215	179,000
● Medium Training room 1206	178				120	168	153,300
● Medium Training room 1605	110				78	110	136,400
● Small Training room 1203	66				36	59	78,500

Basic rates for weekdays, 9:00~21:00, including tax. Please contact each facility directly for specific rates.

## Hotel accommodation

Guestroom type	No. of rooms	No. of people	Notes
No accommodation facilities			

## Restaurants and Bars

Type	Number	Capacity	Notes
The 16th floor lounge, multi-purpose lounge, and Skyroom can be used for banquets and events, for a maximum of 160 people eating while standing.			



## Main Floor Plan

[12F]



[16F]



## Special Features

Featuring good access from Sapporo Station, 5 mins. on foot with a direct connection underground, this facility can be used for a variety of purposes, such as conferences, study events, seminars, company orientation, interviews, etc. From the largest hall accommodating more than 300 people, to the medium-sized halls perfect in size for seminars, a premium room for special guests, conference rooms for small group sessions, and lounge spaces suitable for gatherings after the conference, this facility can meet a wide variety of customers' needs and wishes.

This facility is used as a satellite campus by four universities, and can be used for academic or research conferences, medical lectures, as a testing site for university entrance examinations or certification examinations, and for a variety of other academic uses.

Services can include the ordering of coffee, bento lunch boxes, and catering for your event. Our experienced staff is ready to support you from the planning stage through to the end of your event.

## Facilities/Notes

### Room Notes

The rates at left are for full-day (9:00~21:00) usage on weekdays.

### Main Facilities

● Large training room 1614 - LCD projector (6000 lumens), 150 inch wide screen.

● Large Training Room 1606 - LCD Projector (5200 lumens), 120 inch wide screen.

● Also available for the training rooms are an additional movable LCD projector (Wide/HDMI, max. 5100 lumens), a short-focus LCD projector with a 52-inch LCD monitor, infrared wireless microphones, and other equipment. Details and fees can be viewed on the Hall webpage.

### Other Notes

Large equipment can be brought into the hall via the service entrance. Please speak to staff beforehand if this is required.

## Service

### Internet Usage



### Management Support



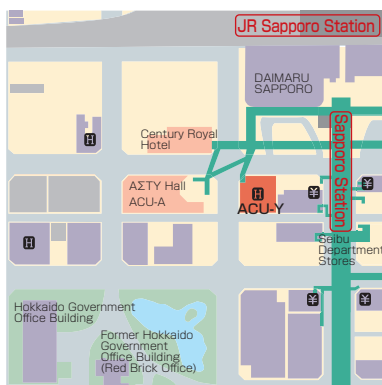
Bento lunch boxes, movable panels, etc., available for a fee.

### Universal Accessibility



Elevator





- Address...Yomiuri Hokkaido Bldg. 3F, Kita 4 Nishi 4, Chuo-ku, Sapporo
- Tel...+81-11-272-3838
- Fax...+81-11-272-3278
- URL...<https://www.acu-h.jp/>
- Access
- [Subway] 5 mins. walk from Sapporo Subway Station on the Nanboku and Toho Lines (directly connected to the subway) .
- [JR] 5 mins. walk from Sapporo JR Station west ticket gate (directly connected to the subway) .
- Parking
- Neighboring parking

## Convention Rooms

Name	Area (m <sup>2</sup> )	Ceiling	Floor load	Dinner (people)	Buffet (people)	School (people)	Theater (people)	Basic rate (¥)
● Large training room Y0313	199					150	215	231,100
● Mid-size training room Y0305	151					102	144	188,900
● Small training room Y0306	65					45	48	110,600
● Multipurpose room Y0302	45					20(Single-seat chairs)	35	81,200
● Y Lounge Y0300	73						40(Stand-up meal style)	49,300

Basic rates for weekdays, 9:00~21:00, including tax.

## Hotel accommodation

Guestroom type	No. of rooms	No. of people	Notes
No accommodation available.			

## Restaurants and Bars

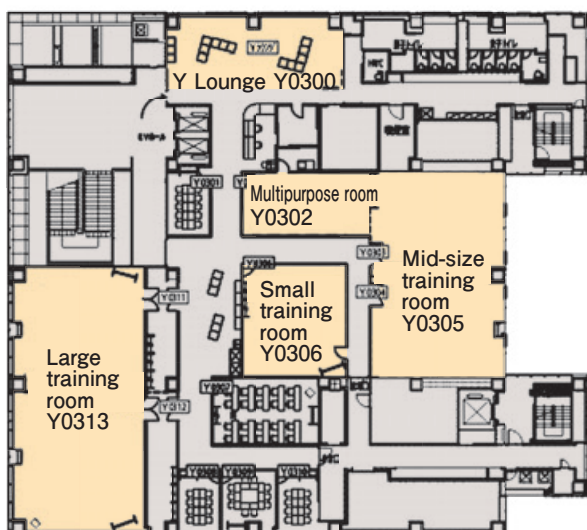
Type	Number	Capacity	Notes
It is possible to have a social gathering at Y Lounge or in a multipurpose room. Up to 40 people can be accommodated for a stand-up party.			



Lounge  
Training room



## 主会場平面図



Catering service

## Special Features

- ACU-Y on a lower floor
- To meet the needs of more customers, this facility was established on the third floor of the Yomiuri Hokkaido Building in September 2016. With wide, accessible stairs, it flexibly accommodates various events.
- The large training room is equipped with a convenient tablet-based audio control system, loudspeakers that take the sonic palette into consideration, and an entry system that enables sound reproduction from an iPad. An HDBaseT system has been installed in large training room Y0313 and mid-size training room Y0305, enabling HD movies and sound to be transmitted.
- The floor can be reserved. There is one main entry (up to two entries can be opened), an exclusive restroom and a smoking room. Reservation of the entire floor enables tight security for room access management.
- Adjoining a kitchen, multipurpose room Y0302 allows users to make simple dishes. Catered stand-up parties can be held. The facility is extensively used for various events.

## Facilities/Notes

- Room Notes
- Rates on the left are for all-day usage on weekdays (9:00 - 21:00). Use of the kitchen with multipurpose room Y0302 incurs a separate charge. Y Lounge Y0300 is available only at night.
- Main Facilities
- A large LCD projector, an audio system and other equipment necessary for conferences are prepared for smooth training and conferences. All rooms have Internet access, and Wi-Fi can be used on the entire floor. (Two Wi-Fi lines and two fixed lines are available.)
- Smooth reservation management using a unique reservation system
- The ACU reservation management system is used to manage reservations, related meetings and billing, allowing an experienced reservation coordinator to provide total support for reserved events. Those who have enrolled as members under the system for companies can easily make an online reservation and follow procedures. Any inquiry can be answered quickly, and the user's access history will be stored for the convenience of subsequent uses.

## サービス

- Internet Usage
- Management Support
- Universal Accessibility