

## 面積計算 計算書

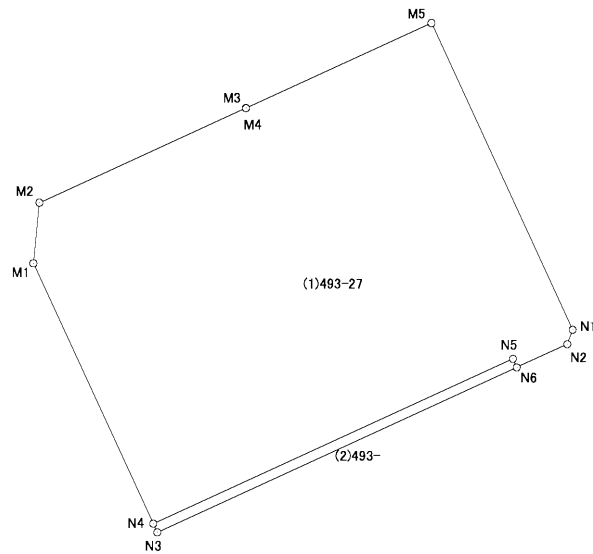
現場名: 市営住宅下野幌団地 (Gブロック) 用地確定測量

地番No: 8 地番名: (1)493-27

点名	Xn	Yn	距離	方向角	Yn+1-Yn-1	Xn × (Yn+1-Yn-1)
N4	-106964.354	-63499.889	92.895	335-19-10	-155.168	16597444.881472
M1	-106879.945	-63538.678	19.749	5-31-57	-36.885	3942266.771325
M2	-106860.288	-63536.771	73.591	65-19-13	68.776	-7349123.167488
M3	-106829.559	-63469.902	0.086	155-13-29	66.908	-7147752.133572
M4	-106829.637	-63469.866	66.059	65-19-12	60.061	-6416294.827857
M5	-106802.054	-63409.841	109.407	155-19-14	105.707	-11289724.722178
N1	-106901.468	-63364.159	5.000	200-19-36	43.945	-4697785.011260
N2	-106906.157	-63365.896	17.976	245-19-21	-18.071	1931901.163147
N6	-106913.662	-63382.230	3.065	335-18-59	-17.614	1883177.242468
N5	-106910.877	-63383.510	128.078	245-19-15	-117.659	12579026.876943

倍面積合計	32837.073000
1/2	16418.5365000

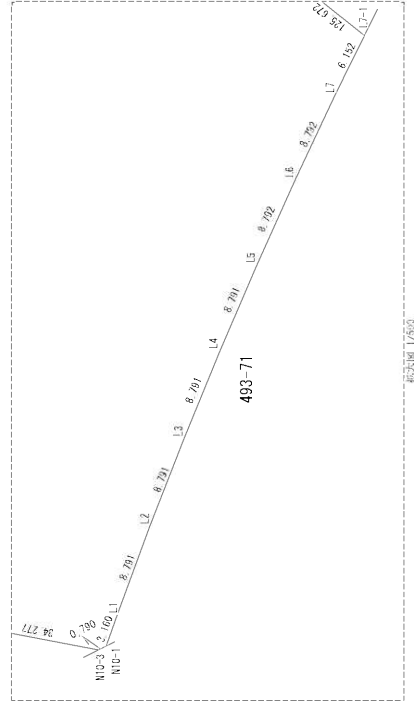
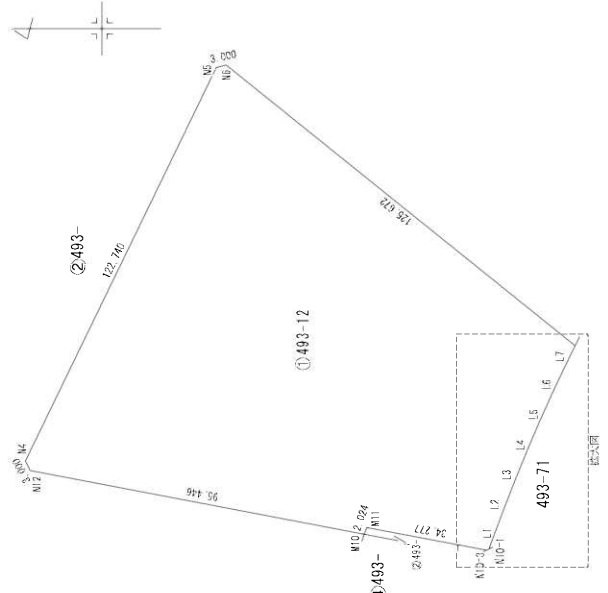
合計面積	16418.5365000
------	---------------



# 面積（座標法）計算書 S=1/1500

地番：①493-12

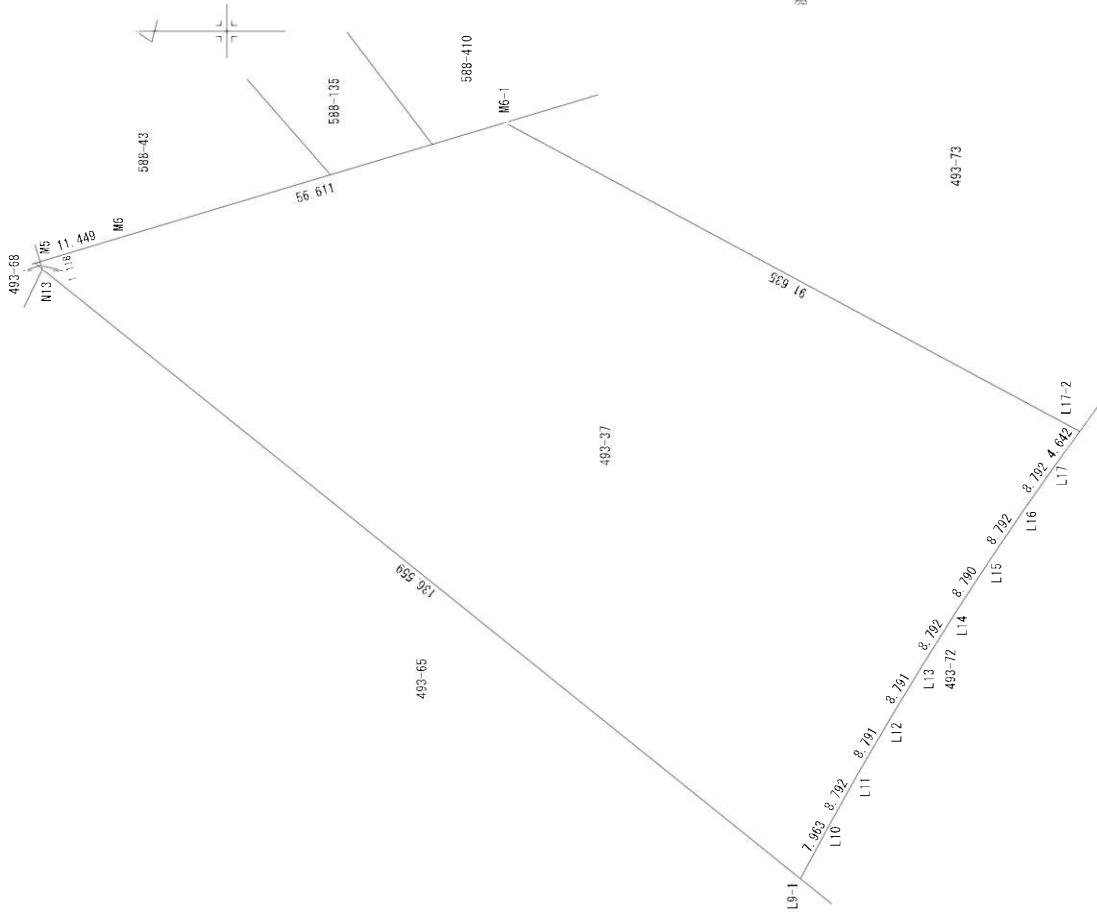
測点名	[1]	[2]	[3]	[4]	[2]*[3]	[1]*[4]	方向角	夾角	距離
	X(i)	X(i+1)-X(i-1)	Y(i)	Y(i+1)-Y(i-1)					
N4	-106403.783	-52.116-63116.860	113.164	3289398.275760	-12041077.699412		115-49-20	232-30-25	122.740
N5	-106457.246	-56.390-63006.376	111.143	3552929.542640	-11831977.692178		167-18-42	231-29-22	3.000
N6	-106460.173	-100.847-63005.717	-78.113	6353937.542299	8315923.493549		218-48-54	231-30-12	125.672
L7-1	-106558.093	-95.204-63084.489	-84.292	6005895.690756	8981994.775156		296-11-55	257-23-01	6.152
L7	-106555.377	6.459-63090.009	-13.475	-407498.368131	1435833.705075		295-11-53	178-59-58	8.792
L6	-106551.634	7.349-63097.964	-15.973	-463706.937436	1701949.249882		294-12-55	179-01-02	8.792
L5	-106548.028	7.072-63105.982	-16.097	-446285.504704	1715103.606716		293-13-12	179-00-17	8.791
L4	-106544.562	6.792-63114.061	-16.217	-428670.702312	1727833.161954		292-13-47	179-00-35	8.791
L3	-106541.236	6.510-63122.199	-16.332	-410925.515490	1740031.466352		291-14-06	179-00-19	8.791
L2	-106538.052	6.226-63130.393	-16.442	-393049.826818	1751698.650984		290-14-41	179-00-35	8.791
L1	-106535.010	4.110-63138.641	-11.222	-259499.814510	1195535.882220		289-45-14	179-30-33	3.160
N10-1	-106533.942	1.774-63141.615	-3.329	-112013.225010	354651.492918		333-18-19	223-33-05	0.790
N10-3	-106533.236	34.375-63141.970	6.075	-2170505.218750	-647189.408700		10-48-43	217-30-24	34.277
M1	-106499.567	34.354-63135.540	4.525	-2168958.341160	-481910.540675		289-46-39	98-57-56	2.024
M10	-106498.882	94.437-63137.445	16.000	-5962510.893465	-1703982.112000		10-48-44	261-02-05	95.446
N12	-106405.130	95.099-63119.540	20.585	-6002605.134460	-2190349.601050		63-18-55	232-30-11	2.999
合計			倍面積	-24068.430791	24068.430791				449.008
			面積	12034.2153955	12034.2153955				
			坪数	3640.35	3640.35				





# 面積(座標法)計算書

S=1/750



## 面積(座標法)計算書

所在地：厚別区厚別中央1条6丁目

測点番号：493-37

測点番号	X(i)	X(i+1)	X(i+1)-X(i)	Y(i)	Y(i+1)	Y(i+1)-Y(i)	[1]*[2]	[2]*[3]	[1]*[4]	方向角	夾角	距離
M13	-104457.264	106.727	-62387.973	86.668	-6722517.394371	-9225428.156352	-9225428.156352	-9225428.156352	73-06-16	214-17-19	1.118	
M5	-104456.939	-10.638	-62386.903	4.270	870054.674114	-465216.822430	-465216.822430	-465216.822430	183-14-51	270-08-35	11.449	
M6	-106167.902	-65.204	-62383.603	13.508	410683.850012	-2076976.832216	-2076976.832216	-2076976.832216	163-21-47	180-06-56	56.611	
M8-1	-105322.143	-134.963	-62367.365	-27.124	8496627.879285	2883006.606732	2883006.606732	2883006.606732	298-13-16	224-51-29	91.635	
L17-2	-105602.885	-78.003	-63010.727	-47.082	4915214.770362	5919077.031570	5919077.031570	5919077.031570	306-06-52	277-53-36	4.642	
L17	-105600.149	7.794	-63010.477	-10.941	-491134.833738	1166312.230299	1166312.230299	1166312.230299	305-07-18	179-09-26	8.792	
L16	-105595.091	9.990	-63021.888	-14.469	-624686.463320	1542394.371679	1542394.371679	1542394.371679	304-07-26	179-09-08	8.792	
L15	-105590.169	9.737	-63028.946	-14.639	-613712.847202	1662373.337601	1662373.337601	1662373.337601	302-06-08	179-09-40	8.790	
L14	-105585.354	9.483	-63036.307	-14.805	-597773.289281	1677996.165970	1677996.165970	1677996.165970	302-08-47	179-09-41	8.792	
L13	-105580.576	9.228	-63043.751	-14.967	-581641.646726	1695192.977692	1695192.977692	1695192.977692	301-09-18	179-09-31	8.791	
L12	-105576.128	8.965	-63051.274	-15.124	-565254.671410	1611857.359872	1611857.359872	1611857.359872	300-09-40	179-09-22	8.791	
L11	-105571.711	8.702	-63058.875	-15.278	-548738.370250	1628202.600638	1628202.600638	1628202.600638	299-10-07	179-09-27	8.792	
L10	-105567.426	8.045	-63066.562	-14.496	-507370.410840	15686114.892496	15686114.892496	15686114.892496	298-10-39	179-09-32	7.683	
L9-1	-105563.666	110.162	-63073.571	76.579	-6948310.728502	-8373666.310614	-8373666.310614	-8373666.310614	38-48-57	280-38-18	136.559	
合計				總面積	-10060.451867	19460.451867	19460.451867	19460.451867			371.517	
				面積	7230.2259335	7230.2259335	7230.2259335	7230.2259335				
				面積	2187.14	2187.14	2187.14	2187.14				

# 面積 (座標法) 計算書

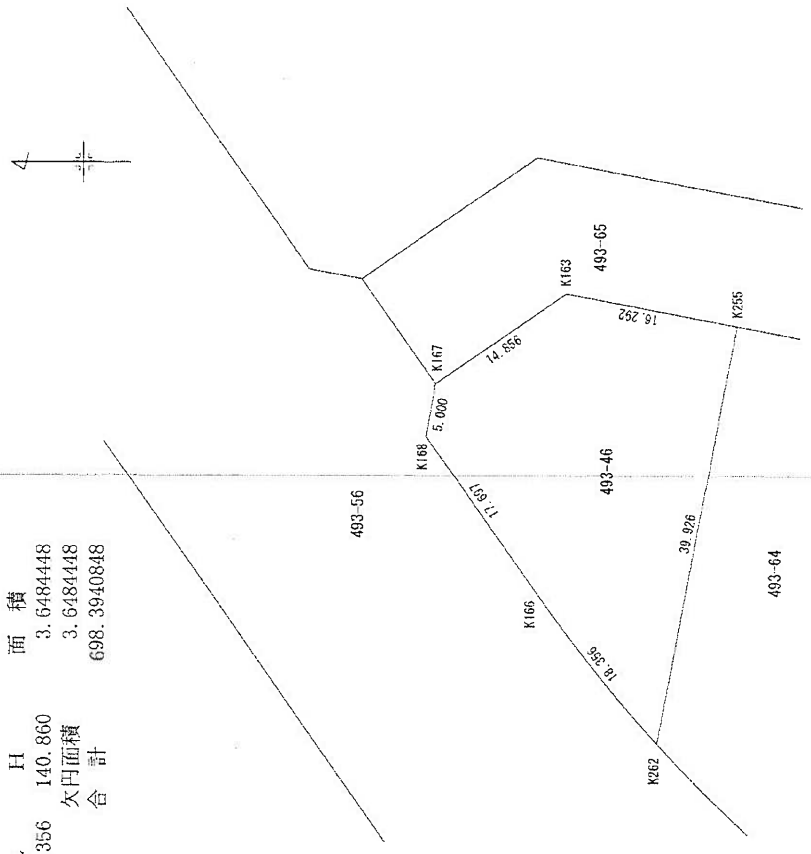
所在地: 厚別区厚別中央1条6丁目

地番: 493-46

測点名	[1] X(i)	[2] X(i+1)-X(i-1)	[3] Y(i)	[4] Y(i+1)-Y(i-1)	[2]*[3]	[1]*[4]	方向角	夾角	距離
K262	-106378.802	18.936-63167.377	18.936-63167.377	-24.857	-1196137.450872	2644257.881314	51-29-47	310-38-45	18.343
K166	-106367.382	21.558-63153.022	21.558-63153.022	28.860	-1361452.848276	-3069762.644520	55-02-57	183-33-10	17.697
K168	-106357.244	9.261-63138.517	9.261-63138.517	19.428	-584725.805937	-2066308.536432	100-06-03	225-03-06	5.000
K167	-106358.121	-13.071-63133.594	-13.071-63133.594	13.409	828519.207174	-1426156.044489	145-09-55	225-03-52	14.856
K163	-106370.315	-28.197-63125.108	-28.197-63125.108	5.429	1779938.670276	-577484.440135	190-48-53	225-38-58	16.292
K255	-106386.318	-8.487-63128.165	-8.487-63128.165	-42.269	535768.736355	4496843.275542	280-51-02	270-02-09	39.926
合計				倍面積 -1389.491280		1389.491280			112.115
				面積 694.7456400		694.7456400			
				坪数 210.16		210.16			

## 欠円面積成果表

地番 = 493-46	器械点	半径	弦長	I A	I A/2	T L	S L	C L	H	面積
K262	K166	-141.158	18.343	7-27-03	3-43-31	9.191	0.299	18.356	140.860	3.6484448
									欠円面積	3.6484448
									合計	698.3940848



# 面積 ( 座標法 ) 計算書

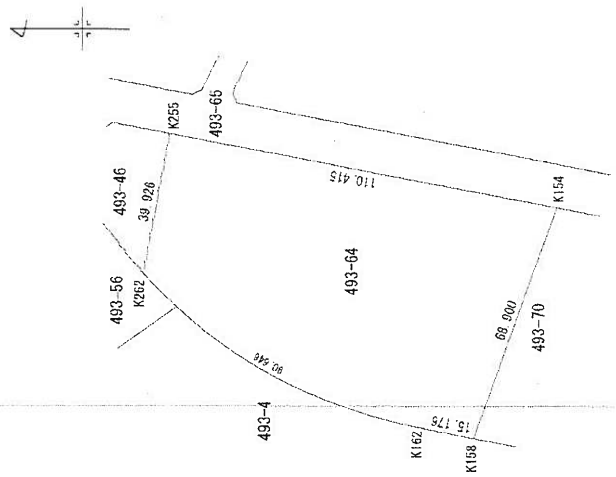
所在地：厚別区厚別中央1条6丁目

番：493-64

測点名	[1] X(i)	[2] X(i+1)-X(i-1)	[3] Y(i)	[4] Y(i+1)-Y(i-1)	[2]*[3]	[1]*[4]	方向角	夾角	距離
K158	-106471.469	38.210-63213.717		-61.989	-2415396.125570	6600059.891841	10-49-27	261-03-18	15.176
K162	-106456.563	92.667-63210.867		46.340	-5857561.412289	-4933197.129420	29-13-02	198-23-35	89.096
K262	-106378.802	70.245-63167.377		82.702	-4437192.397365	-8797739.683004	100-51-02	251-38-00	39.926
K255	-106386.318	-115.971-63128.165		18.499	7321036.423215	-1968040.496682	190-48-44	259-57-42	110.415
K154	-106494.773	-85.151-63148.878		-85.552	5377190.110578	9110840.819696	289-46-09	278-57-25	68.900
合計				倍面積	-11923.402431	11923.402431			323.513
				面積	5961.7012155	5961.7012155			
				坪数	1803.41	1803.41			

## 欠円面積成果表

地番 = 493-64	器械点	半径	弦長	I A	I A/2	T L	S L	C L	H	面積
K262	K262	-141.158	89.096	36-47-35	18-23-47	46.947	7.602	90.646	133.944	430.7221590
										欠円面積
										合計
										6392.4233745

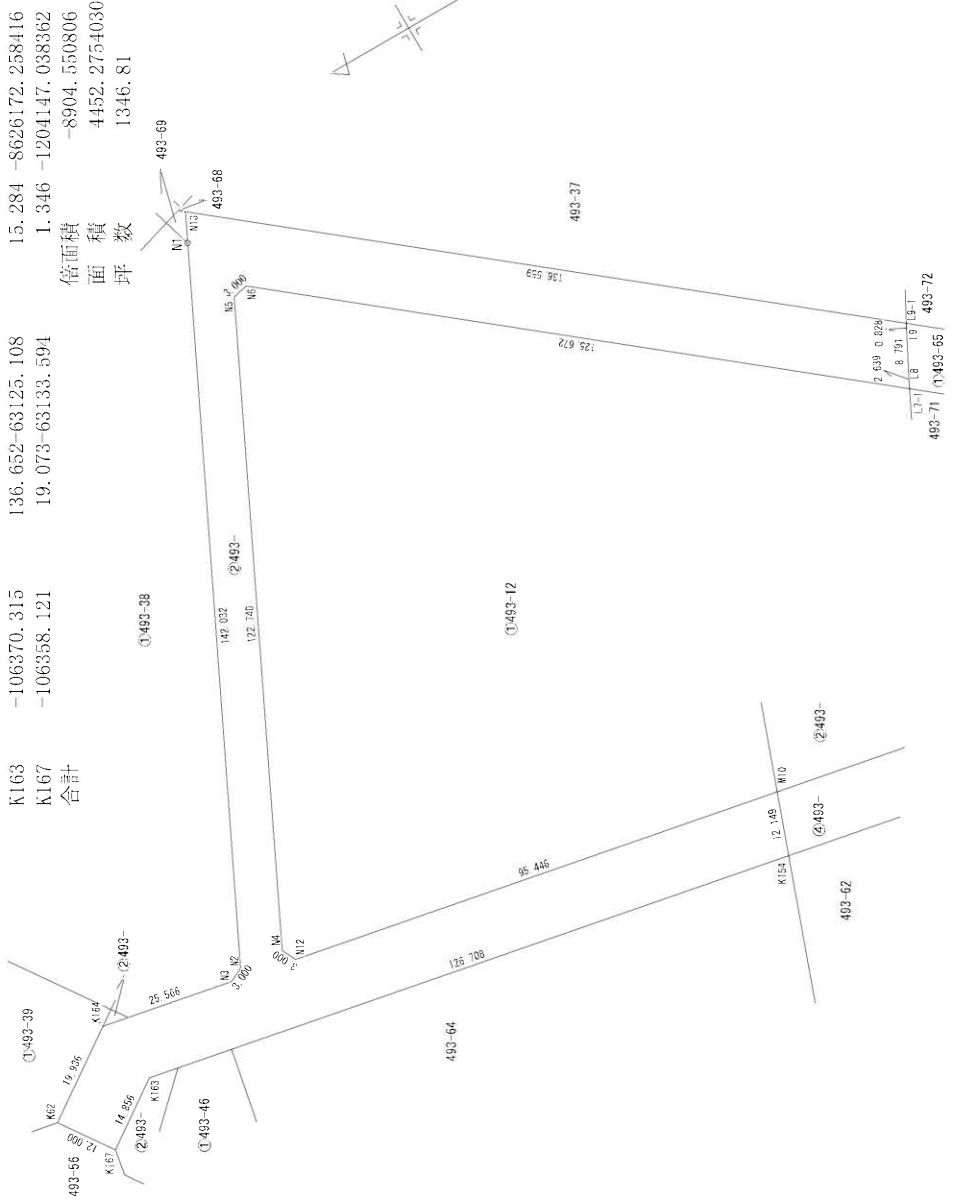


# 面積（座標法）計算書

S=1/1000

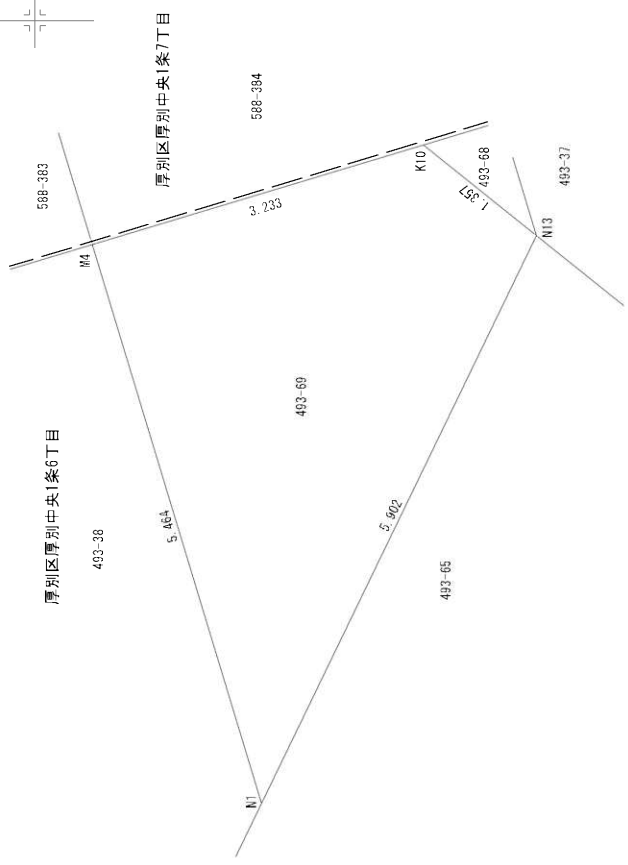
地番：②493-  
測点名

測点名	[1]	[2]	[3]	[4]	[1]*[3]	[2]*[3]	[1]*[4]	方向角	夾角	距離
	X(i)	X(i+1)-X(i-1)	Y(i)	Y(i+1)-Y(i-1)						
K62	-106351.242	-9.484-63123.762	21.220	598665.758808	-2256773.355240		145-09-49	270-08-32	19.936	
K164	-106367.605	-41.475-63112.374	6.592	2617585.711650	-701175.252160		190-48-45	225-38-56	25.566	
N3	-106392.717	-27.792-63117.170	-3.449	1754152.388640	366948.480933		153-18-55	142-30-10	3.000	
N2	-106395.397	-64.547-63115.823	129.197	4073937.027191	-13745966.106209		115-49-21	142-30-26	142.032	
N13	-106457.264	-168.269-62987.973	42.252	10598923.228737	-4498032.318528		218-48-57	282-59-36	136.559	
L9-1	-106563.666	-106.011-63073.571	-86.328	6686492.335281	9199428.158448		298-10-27	259-21-30	0.828	
L9	-106563.275	4.408-63074.301	-8.550	-278031.518808	911116.001250		297-11-20	179-00-53	8.791	
L8	-106559.258	5.182-63082.121	-10.188	-326891.551022	1085625.720504		296-11-46	179-00-26	2.639	
L7-1	-106558.093	99.085-63084.489	76.404	6250726.592565	-8141464.537572		38-48-54	282-37-08	125.672	
N6	-106460.173	100.847-63005.717	78.113	-6353937.542299	-8315923.493549		347-18-42	128-29-48	3.000	
N5	-106457.246	56.390-63006.376	-111.143	-3552929.542640	11831977.692178		295-49-20	128-30-38	122.740	
N4	-106403.783	52.116-63116.860	-113.164	-3289398.275760	12041077.699412		243-18-55	127-29-35	3.000	
N12	-106405.130	-95.099-63119.540	-20.585	6002603.134460	2190349.601050		190-48-44	127-29-49	95.446	
M10	-106498.882	-89.643-63137.445	-29.338	5659829.982135	3124464.200116		289-46-06	278-57-22	12.149	
K154	-106494.773	128.567-63148.878	12.337	-8118861.797826	-1313826.014501		10-48-45	261-02-39	126.708	
K163	-106370.315	136.652-63125.108	15.284	-8626172.258416	-1625763.894460		325-09-55	134-21-10	14.856	
K167	-106358.121	19.073-63133.594	1.346	-1204147.038362	-143158.030866		55-01-17	269-51-22	12.000	
合計				倍面積	-8904.650806		8904.650806			854.922
				面積	4452.2754030		4452.2754030			
				坪数	1346.81		1346.81			



# 面積（座標法）計算書

S=1/50



## 面積（座標法）計算書

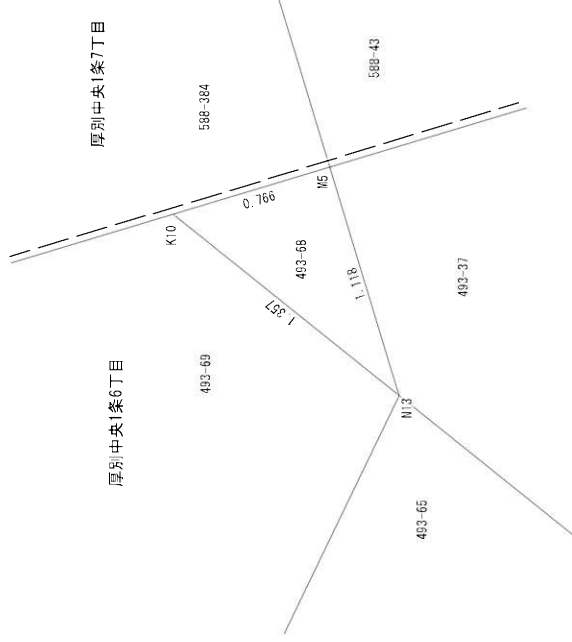
所在地：厚別区厚別中央1条6丁目  
 測点番：493-69

測点名	[1]	[2]	[3]	[4]	[1]*[4]	方向角	夾角	距離
N1	X(i)	X(i+1)-X(i-1)	Y(i)	Y(i+1)-Y(i-1)				
N1	-106454.693	4.154-62993.286	-0.083	-261674.110044	8835.739519	73-09-37	317-20-15	5.464
M4	-106453.110	-1.513-62988.056	6.162	95300.928728	-655964.063820	163-14-47	270-05-10	3.233
K10	-106456.206	-4.154-62987.124	0.083	261648.513096	-8835.865098	218-44-44	235-29-57	1.357
N13	-106457.264	1.513-62987.973	-6.162	-95300.803149	655989.660768	295-49-22	257-04-38	5.902
合計			倍面積	-25.471369	25.471369			15.956
			面積	12.7356845	12.7356845			
			坪數	3.85	3.85			



# 面積（座標法）計算書

S=1/25



## 面積（座標法）計算書

所在地：厚別区厚別中央1条6丁目

地番：493-68

測点名	[1]	[2]	[3]	[4]	[1]*[4]	方向角	夾角	距離
	X(i)	X(i+1)-X(i-1)	Y(i)	Y(i+1)-Y(i-1)				
N13	-106457.264	0.733-62987.973	973	-0.221	-46170.184209	38-44-44	325-38-28	1.357
K10	-106456.206	0.325-62987.124	124	1.070	-20470.815300	163-13-19	304-28-35	0.766
M5	-106456.939	-1.058-62986.903	903	-0.849	66640.143374	253-06-16	269-52-57	1.118
合計				倍面積	-0.856135			3.241
				面積	0.4280675			
				坪数	0.12			

# 面積（座標法）計算書 s=1/10

地番：③493-

測点名	[1] X(i)	[2] X(i+1)-X(i-1)	[3] Y(i)	[4] Y(i+1)-Y(i-1)	[1]*[4]	方向角	夾角	距離
N10-3	-106533.236	-0.166-63141.970	0.459	0.459	-48898.755324	153-18-19	322-24-14	0.790
N10-1	-106533.942	-0.540-63141.615	-0.104	-0.104	11079.529968	289-52-58	316-34-39	0.488
N10-2	-106533.776	0.706-63142.074	-0.355	-0.355	37819.490480	10-54-05	261-01-07	0.550
合計			倍面積	0.265124				1.828
			面積	0.1325620				
			坪数	0.04				

