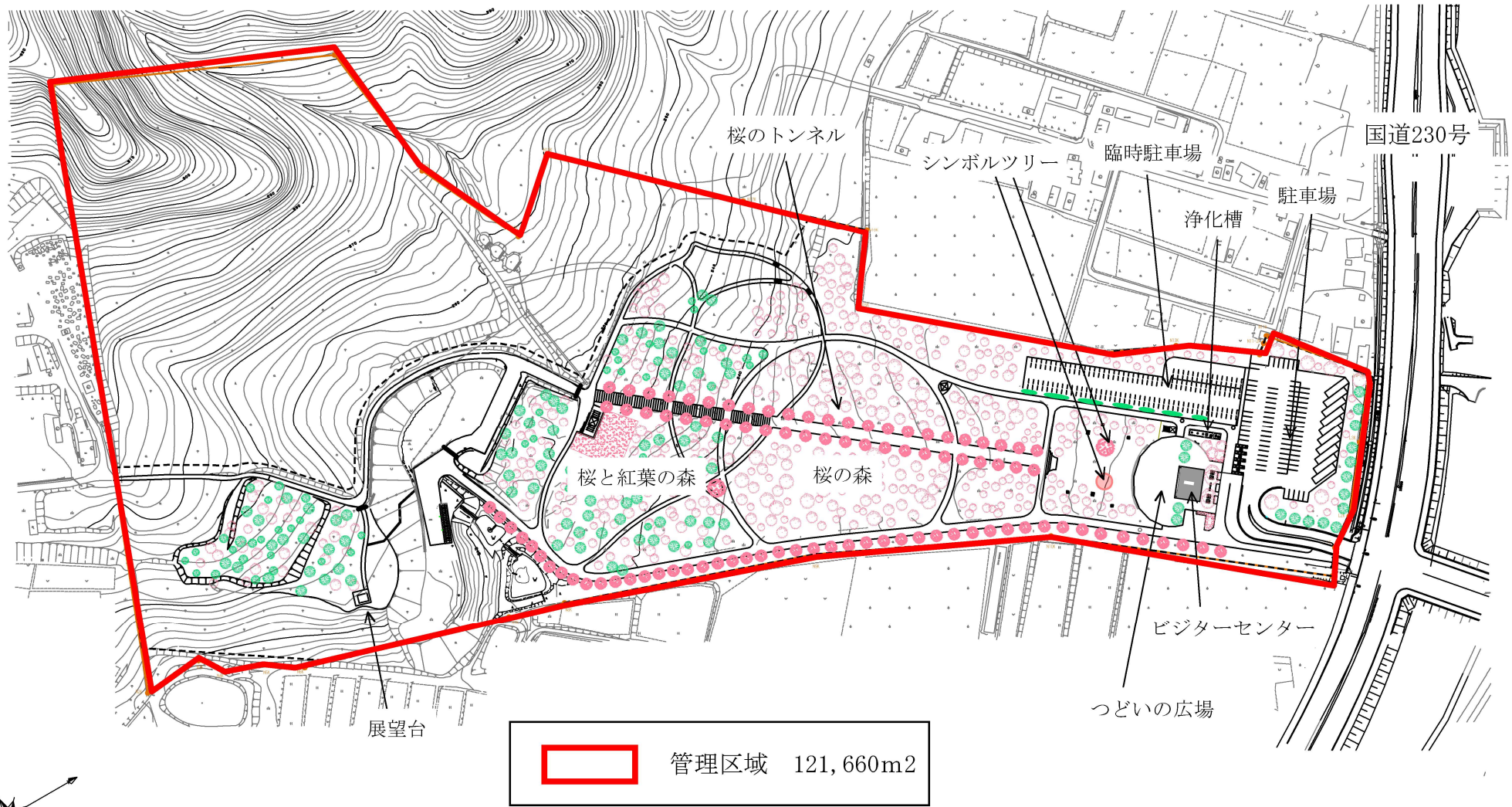
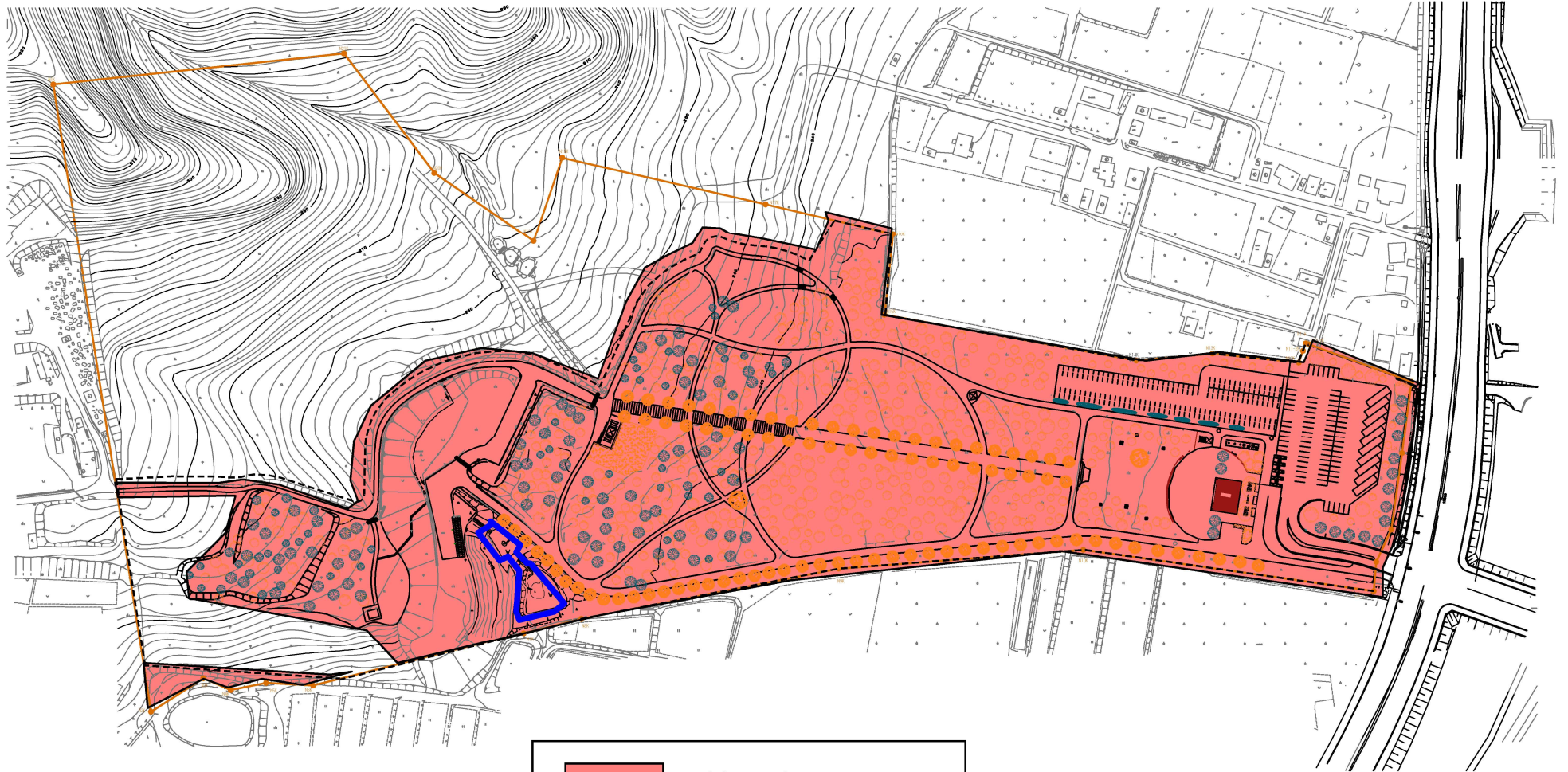




小金湯さくらの森  
管理区域図





小金湯さくらの森  
清掃区域図

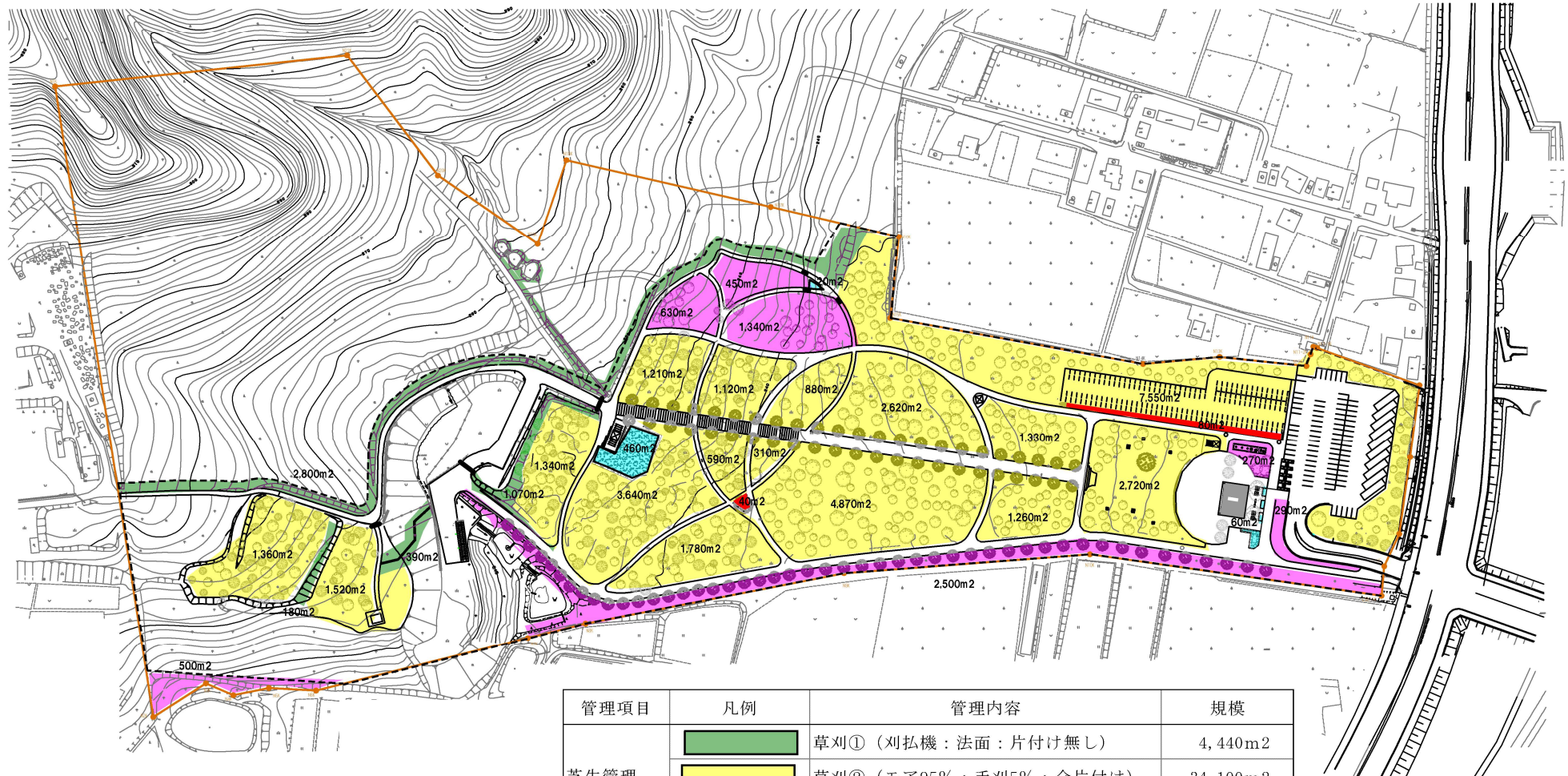







	清掃区域 72,230m <sup>2</sup>
	池清掃区域 一か所





小金湯さくらの森  
芝生・植栽管理



管理項目	凡例	管理内容	規模
芝生管理		草刈① (刈払機：法面：片付け無し)	4,440m <sup>2</sup>
		草刈② (モア95%：手刈5%：全片付け)	34,100m <sup>2</sup>
		草刈③ (刈払機95%：手刈5%：全片付け)	5,690m <sup>2</sup>
植栽管理		寄植刈込	120m <sup>2</sup>
		花壇除草A	540m <sup>2</sup>

