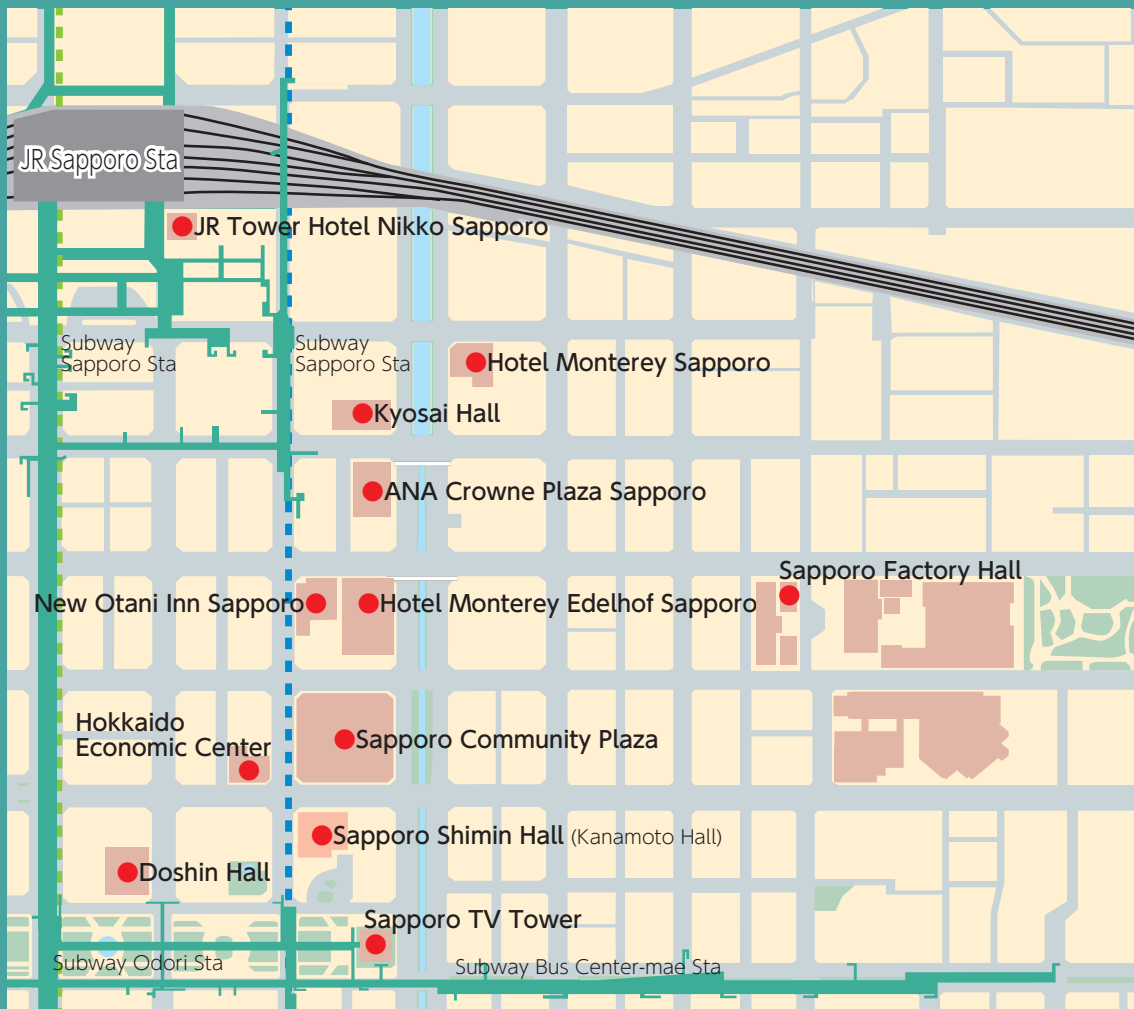
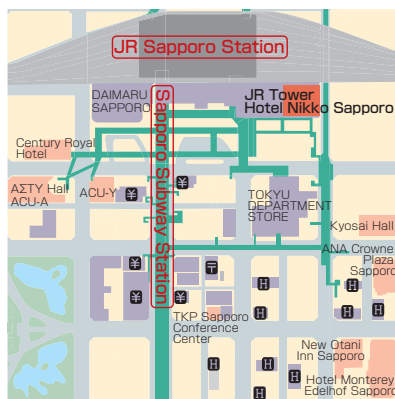


Central Part East Area

| | |
|--|----|
| JR Tower Hotel Nikko Sapporo ... | 28 |
| Kyosai Hall | 29 |
| ANA Crowne Plaza Sapporo | 30 |
| Sapporo Community Plaza..... | 31 |
| Sapporo Factory Hall..... | 32 |
| Sapporo Shimin Hall (Kanamoto Hall) | 33 |
| Doshin Hall | 34 |
| Hokkaido Economic Center | 35 |
| New Otani Inn Sapporo | 36 |
| Hotel Monterey Edelhof Sapporo ... | 37 |
| Hotel Monterey Sapporo..... | 38 |
| Sapporo TV Tower | 39 |



JR Tower Hotel Nikko Sapporo



- Address...5, Kita 5 Nishi 2, Chuo-ku, Sapporo
- Tel...+81-11-251-2222 (Main)
+81-11-251-6000 (Sales)
+81-11-251-2510 (Reservation)
- Fax...+81-11-251-6370
- URL...<https://www.jrhotels.co.jp>
- Access
- [Subway] 5 mins. walk from Sapporo Subway Station on the Nanboku Line.
- [JR] 3 mins. from Sapporo JR Station
- Parking
- 500 spaces in JR Tower East parking structure,
1,200 yen / night (Tax included)

Convention Rooms

| Name | Area (m ²) | Ceiling | Floor load | Dinner (people) | Buffet (people) | School (people) | Theater (people) | Basic rate (¥) |
|---------------|------------------------|---------|----------------------|-----------------|-----------------|-----------------|------------------|----------------|
| ● Taiyo [36F] | 304 | 3.3m | 360kg/m ² | 180 | 200 | 180 | 250 | 770,000 |
| ● Tsuki [36F] | 75 | 3.3m | 360kg/m ² | 40 | 40 | 42 | 70 | 220,000 |
| ● Hoshi [36F] | 60 | 3.3m | 360kg/m ² | 30 | 30 | 24 | 63 | 175,926 |

Basic rates are for all day use. Service charge is included. Tax is not included.

Hotel accommodation

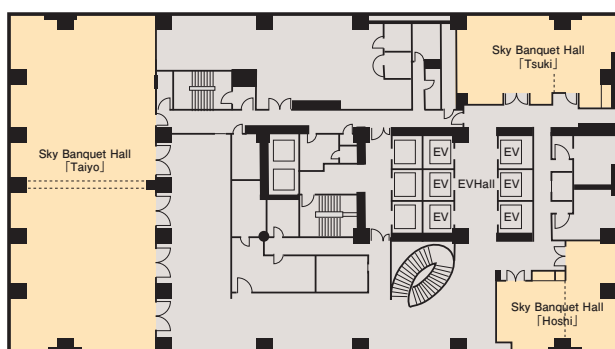
| Guestroom type | No. of rooms | No. of people | Notes |
|------------------|--------------|-----------------|-------|
| ● Japanese-style | | | |
| ● Suite | 2 | 4 | |
| ● Single | 45 | 45 | |
| ● Twin | 211 | 442 | |
| ● Other | 74 | 148 (74 Double) | |
| ● Total | 342 | 635 | |

Restaurants and Bars

| Type | Number | Capacity | Notes |
|--------------------|--------|----------|------------------|
| ● Restaurant | 2 | 146 | French, Japanese |
| ● Restaurant & Bar | 1 | 104 | |
| ● Tea Lounge | 1 | 45 | |



Main Floor Plan



Special Features

This landmark hotel in Sapporo opened in 2003 in the JR Tower commercial complex, which consists of four shopping malls, a department store, a multiplex cinema and medical facilities. With excellent access to Sapporo Station, a natural hot spring spa, four restaurants serving delicious Hokkaido food, and beautiful views from guest rooms on the upper floors, the attractive urban resort hotel guarantees the ultimate in relaxation.

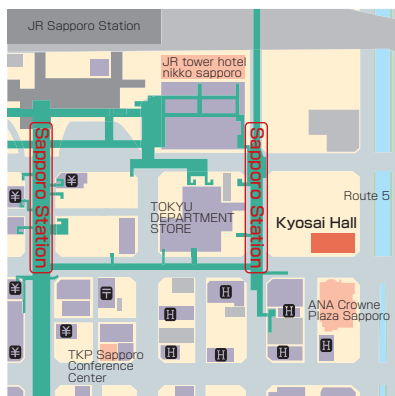
Facilities/Notes

- Room Notes
- Guest rooms on the 23rd floor and higher floors with night and daytime views of magnificent mountains and the Sea of Japan.
- Breakfast at restaurants with panoramic views from 150 m above ground (Restaurant & Bar Sky (buffet), Sky Restaurant Tancho (Japanese sets, rice porridge sets))
- A "sky banquet" plan featuring spectacular views from the banquet rooms on the 36th floor and Hokkaido food
- Excellent access: direct connection to JR Sapporo Station, a 10-minute walk to Hokkaido University (Main Gate) and an approximately 15-minute drive to the Sapporo Convention Center
- Main Equipment for Loan or Rent
- Microphones, wireless microphones, spot light, CD cassette deck, slide projector, liquid-crystal projector, screen, 120-inch electric screen, laser pointer, monitor TV, DVD deck, white board, lecture table, etc.

Service

- Internet Usage
- High-speed internet connection and Wi-Fi available in all guestrooms.
- Language Services
- English speaking staff are available. Signatures and documents in English are accepted.
- Universal Accessibility
-
- Credit Cards Accepted
-

Kyosai Hall



- Address...Kyosai Bldg. 6th floor, Kita 4 Nishi 1, Chuo-ku, Sapporo
 - Tel...+81-11-251-7333
 - Fax...+81-11-232-6900
 - URL...<http://www.kyosaihall.jp>
 - Access
 - [Subway] 5 mins. walk from Sapporo Subway Station on the Nanboku Line, and 2 mins. walk from Sapporo Subway Station on the Toho Line.
 - Parking
- No parking facilities. Nearby parking lots are available (with fee).

Convention Rooms

| Name | Area (m ²) | Ceiling | Floor load | Dinner (people) | Buffet (people) | School (people) | Theater (people) | Basic rate (¥) |
|--------------------|------------------------|---------|------------|-----------------|-----------------|-----------------|------------------|----------------|
| ● Kyosai Hall [6F] | 650 | | | | | | | (110,000) |

Basic rate shown is for usage from 9:00~16:00, tax not included. See information at right for more details on the rate in parentheses. Please contact each facility directly for specific rates.

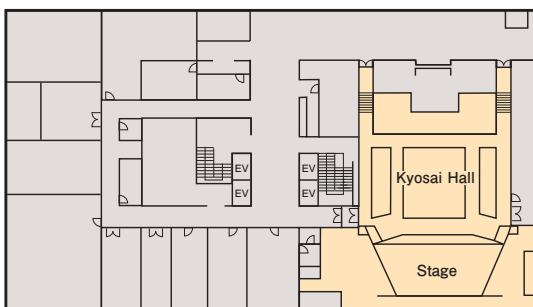
Hotel accommodation

| Guestroom type | No. of rooms | No. of people | Notes |
|----------------|--------------|---------------|-----------------------------|
| | | | No accommodation facilities |

Restaurants and Bars

| Type | Number | Capacity | Notes |
|--------------|--------|----------|-------|
| ● Restaurant | | | |
| ● Bar | | | |
| ● Tea Lounge | | | |
| ● Shop | 1 | | BF |

Main Floor Plan



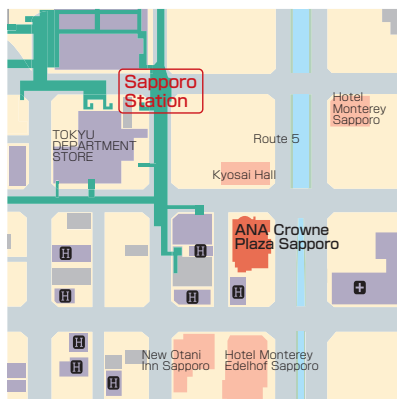
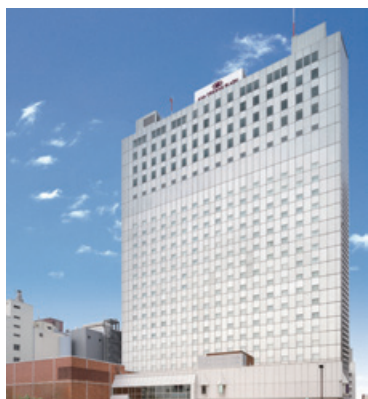
Special Features

This 650-seat hall is located near Sapporo Station, and can accommodate a variety of different types of events.

Facilities/Notes

Room Notes
Basic rate shown is for usage from 9:00-16:00. Please contact the hall directly for further details.

ANA Crowne Plaza Sapporo



- Address...2-9, Kita 3 Nishi 1, Chuo-ku, Sapporo
- Tel...+81-11-242-1885
- Fax...+81-11-221-4499
- URL...<https://www.anacpsapporo.com>
- E-mail...banquet-reservation@anahotel-sapporo.co.jp

● Access

[Subway] 1 min. walk from Sapporo Subway Station exit 21, on the Toho Line.

[JR] 7 mins. walk from Sapporo JR Station

● Parking

96 spaces, with fee:600 yen/ first hour, subsequently 200 yen/30 mins. Overnight guests 1500 yen/night. Banquet guests 200 yen/3 hours, 200 yen/each 30 mins, thereafter. Dining guests 200 yen/2 hours, 200 yen/each 30 mins, thereafter.

Convention Rooms

| Name | Area (m ²) | Ceiling | Floor load | Dinner (people) | Buffet (people) | School (people) | Theater (people) | Basic rate (¥) |
|-------------------|------------------------|---------|------------|-----------------|-----------------|-----------------|------------------|----------------|
| ● Hou [3F] | 512 | 4.1m | | 350 | 350 | 350 | 600 | 1,120,000 |
| ● Shoun [3F] | 213 | 2.7m | | 120 | 120 | 135 | 250 | 400,000 |
| ● Kujaku [3F] | 82 | 2.25m | | 40 | 40 | 42 | 80 | 152,000 |
| ● Hakuyo [24F] | 248 | 2.8m | | 160 | 180 | 165 | 300 | 480,000 |
| ● Shirakaba [23F] | 173 | 2.55m | | 120 | 120 | 105 | 200 | 320,000 |
| ● Katsura [23F] | 52 | 2.6m | | 30 | 40 | 30 | 50 | 96,000 |

Basic charges are for 8 hrs. usage, tax and service charge not included. Please contact each facility directly for specific rates.

Hotel accommodation

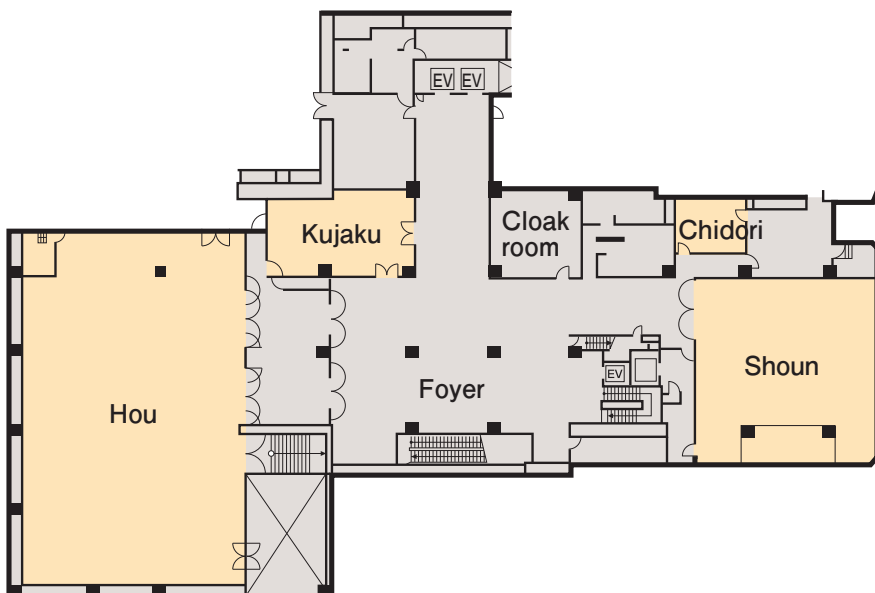
| Guestroom type | No. of rooms | No. of people | Notes |
|------------------|--------------|---------------|---|
| ● Japanese-style | | | |
| ● Suite | 2 | 4 | The figure for suite is an included number. |
| ● Single | 50 | 50 | |
| ● Twin | 362 | 724 | 46 double rooms |
| ● Other | | | |
| ● Total | 412 | 774 | |



Restaurants and Bars

| Type | Number | Capacity | Notes |
|--------------|--------|----------|-------|
| ● Restaurant | 4 | 291 | |
| ● Bar | 1 | 88 | |
| ● Lounge | 1 | 66 | |

Main Floor Plan [3F]



Special Features

ANA Crown Plaza Hotel Sapporo provides a large banquet hall accommodating 350 people, a Western-style banquet hall on an upper floor overlooking downtown Sapporo and a Japanese-style 110 tatami-mat banquet hall, one of the largest halls in the city. Various table plans can be used for dinners, lectures and conferences.

Facilities/Notes

■ Room Notes

In addition to the halls listed at left, the hotel has 11 other Western-style rooms, and four Japanese-style rooms ranging from 14 tatami to 110 tatami size.

■ Other Facilities

- Chapel

Service

■ Internet Usage

Wi-Fi available

■ Management Support



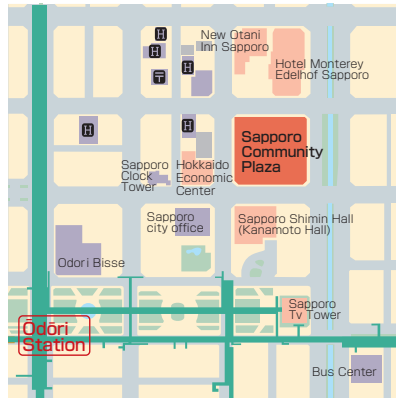
■ Universal Accessibility



■ Credit Cards Accepted



Sapporo Community Plaza



- Address...Kita 1 Nishi 1, Chuo-ku, Sapporo
- Tel...+81-11-271-1000
- Fax...+81-11-242-5656
- URL...<https://www.sapporo-community-plaza.jp>
- Access

[Subway] From Exit 30 of Odori Subway Station on the Tozai, Namboku or Toho line, follow the Nishi 2-chome Underground Walkway, which is directly connected to the facility. A 2-minute walk from Exit 31 [JR] A 10-minute walk from the South Gate of JR Sapporo Station

[Bus] A 2-minute walk from the Tokeidai-mae bus stop or the Kita 1-jo bus stop

● Parking

No parking facilities

*The paid lot on the second basement is the Times Station Sapporo Sosei Square lot, which is open around the clock.

Convention Rooms

| Name | Area (m ²) | Ceiling | Floor load | Dinner (people) | Buffet (people) | School (people) | Theater (people) | Basic rate (¥) |
|---------------------------------|------------------------|---------|------------|-----------------|-----------------|-----------------|------------------|----------------|
| ● Theater [4~9F] | | | | | | | 2,302 | 983,700 |
| ● Creative studio [3F] | 448 | | | | | 200 | 300 | 51,600 |
| ● Waiting room 301·302·303 [3F] | 20 | | | | | 12 | | 2,100 |
| ● Waiting room 401·402 [4F] | 85 | | | | | 42 | 48 | 11,400 |
| ● Waiting room 403·404 [4F] | 36 | | | | | 18 | | 4,400 |
| ● Waiting room 405 [4F] | 36 | | | | | 18 | | 4,300 |
| ● Waiting room 406 [4F] | 31 | | | | | 18 | | 3,700 |
| ● SCARTS Coat [1F] | 165 | | | | | 70 | 130 | 19,300 |
| ● SCARTS Studio1 [2F] | 82 | | | | | 30 | 40 | 8,600 |
| ● SCARTS Studio2 [2F] | 82 | | | | | 30 | 40 | 8,600 |
| ● SCARTS Meeting room 1·2 [2F] | 36 | | | | | 18 | | 3,700 |

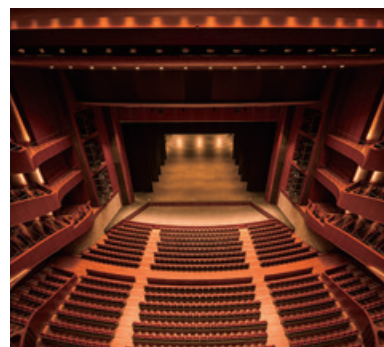
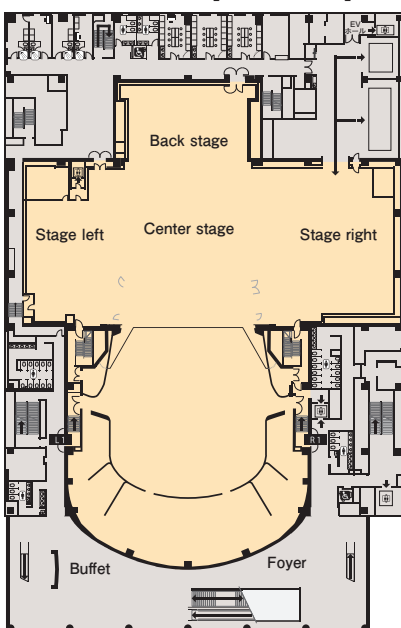
Hotel accommodation

| Guestroom type | No. of rooms | No. of people | Notes |
|-----------------------------|--------------|---------------|-------|
| No accommodation facilities | | | |

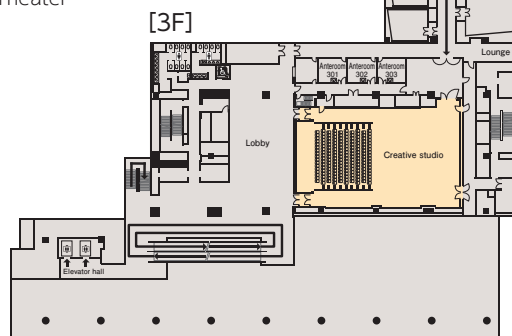
Restaurants and Bars

| Type | Number | Capacity | Notes |
|---------------------|--------|----------|---------------------------|
| ● Cafe[MORIHICO.] | 1 | | [1F]tel...+81-11-590-6540 |
| ● Restaurant[DAFNE] | 1 | | [2F]tel...+81-11-211-0813 |

Main Floor Plan [Theater 5F]



Theater



Special Features

The theater, which features Hokkaido's first "multifaceted" stage, can also be used for large-scale conferences and ceremonies. In addition to the theater, the Creative Studio, training rooms, waiting rooms and other rooms are available.

Facilities/Notes

■ Room Notes

Rates are for usage from 9:00 to 22:00.

For facilities other than the theater, extra fees are charged depending on the event's profits and admission fees.

[Theater] Extra fees are charged on Saturdays, Sundays and national holidays. A discount may be given depending on the admission fee and the number of seats.

[Creative Studio] There are 175 mobile stands. Waiting rooms #403 and #404, waiting rooms #405 and #406, SCARTS studios #1 and #2, SCARTS meeting rooms #1 and #2: Two rooms can be combined.

[School] classroom style using desks

[Theater] Only chairs are arranged.

■ Main Equipment for Loan or Rent

Refer to the "Rental Items" table.

Service

■ Internet Usage

Sapporo City Wi-Fi

■ Language Services

Available at the information counter on the first floor

■ Management Support

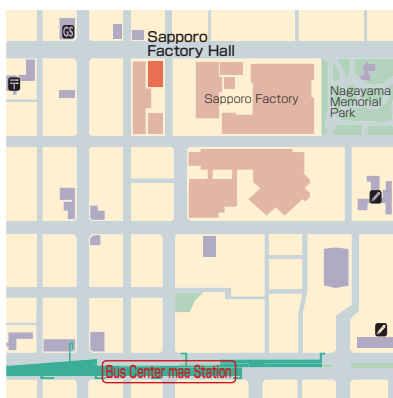
With fee

■ Universal Accessibility



Creative studio

Sapporo Factory Hall



- Address...Kita 2 Higashi 3, Chuo-ku, Sapporo
- Tel...+81-11-207-5233
- Fax...+81-11-207-4233
- URL...<https://sapporofactory.jp/hall/>
- Access
- [Subway] 3 mins. walk from Bus Center Mae Station on the Tozai Line.
- [JR] 12 mins. walk from Sapporo JR Station
- [Bus] Using the Factory line, get off at the Factory Mae bus stop
- [Taxi] 5 mins. ride from Sapporo JR Station
- Parking
- Available
- (Sapporo Factory parking No. 1, No. 2 and No. 4)

Convention Rooms

| Name | Area (m ²) | Ceiling | Floor load | Dinner (people) | Buffet (people) | School (people) | Theater (people) | Basic rate (¥) |
|--|------------------------|---------|------------|-----------------|-----------------|-----------------|------------------|----------------|
| ● Sapporo Factory Hall [1F] | 578 | 6m | | | | 360 | 660 | 400,000 |
| ● Hotel Clubby Guest House Barley [1F] | 230 | 2.7m | | | | 120 | 150 | 200,000 |

Please contact each facility directly for specific rates.

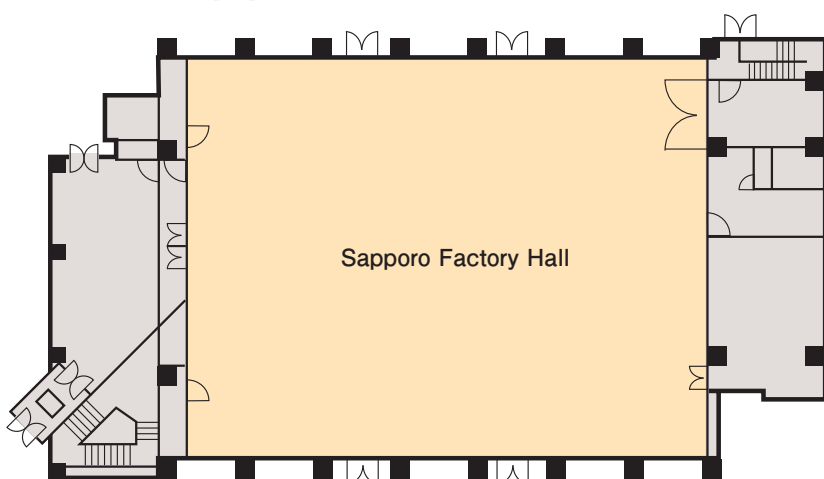
Hotel accommodation

| Guestroom type | No. of rooms | No. of people | Notes |
|----------------|--------------|---------------|---|
| ● Triple | 7 | | |
| ● Double | 14 | | |
| ● Single | 36 | | For details, see the website of Sapporo Factory Hall. |
| ● Twin | 59 | | https://clubby-sapporo.jp/ |
| ● Other | 2 | | |
| ● Total | 118 | | |

Restaurants and Bars

| Type | Number | Capacity | Notes |
|--------------|--------|----------|---|
| ● Restaurant | | | |
| ● Bar | | | For details, see the website of Sapporo Factory Hall. |
| ● Tea Lounge | | | https://clubby-sapporo.jp/ |
| ● Shop | | | |

Main Floor Plan [1F]






Special Features

Sapporo Factory features a red-brick structure that is a historical memorial and the glass-roofed atrium park that provides a comfortable space throughout the year. It is Japan's first full-scale festive center that has various city amenities including a hotel, offices, sports facilities, commercial establishments, restaurants and business pavilions.

Facilities/Notes

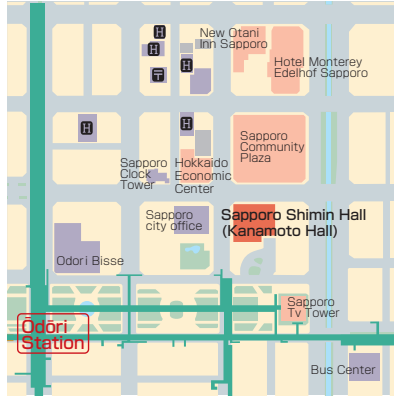
- Room Notes
- The Factory Hall can be used 24 hours a day.
- Main Facilities
- [Sapporo Factory Hall] Sound and lighting systems, removable stage. [Hotel Clubby Guest House Barley] Sound system, conference equipment
- Main Equipment for Loan or Rent
- Chairs, desks, lights, sound system.
- Other Facilities
- Sapporo Factory Fitness Club
- 25m pool, gym, running track, studio, natural hot spring, shop, etc.
- United Cinema Sapporo.
- Hokkaido Development Commission Brewery.

Service

- Internet Usage
- 
- Management Support
- 
- Universal Accessibility
- 



Sapporo Shimin Hall (Kanamoto Hall)



- Address...Kita 1 Nishi 1, Chuo-ku, Sapporo
 - Tel...+81-11-252-3700
 - Fax...+81-11-252-3900
 - URL...<https://www.sapporo-shiminhall.org/>
 - Access
 - [Subway] From Odori Subway Station on the Tozai, Namboku or Toho lines, use Exit 31.
 - [JR] 15 mins. walk from Sapporo JR Station
 - Parking
- Parking for five vehicles of the organizers using the large hall, six vehicles of the organizers using the conference rooms (one vehicle per room), two vehicles of those with disabilities
*There is no parking area for general visitors (participants).

Convention Rooms

| Name | Area (m ²) | Ceiling | Floor load | Dinner (people) | Buffet (people) | School (people) | Theater (people) | Basic rate (¥) |
|-----------------------|------------------------|---------|------------|-----------------|-----------------|-----------------|------------------|----------------|
| ● Hall | 512 | | | | | | 1,500 | 180,000 |
| ● Conference Room 1 | 130 | | | | | 88 | | 10,600 |
| ● Conference Room 2 | 110 | | | | | 74 | | 9,000 |
| ● Conference Room 1+2 | 240 | | | | | 162 | | 19,600 |
| ● Conference Room 3 | 50 | | | | | 24 | | 4,100 |
| ● Conference Room 4 | 50 | | | | | 24 | | 4,100 |
| ● Conference Room 5 | 40 | | | | | 18 | | 3,300 |
| ● Conference Room 5 | 40 | | | | | 18 | | 3,300 |

Basic rates for weekdays, 9:00~22:00, including tax.

Hotel accommodation

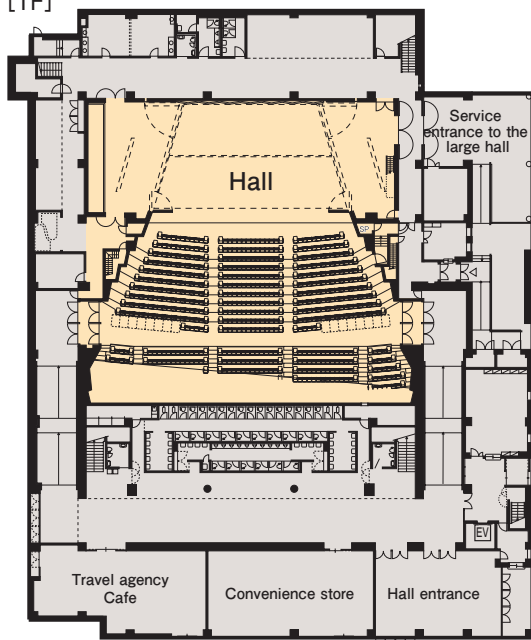
| Guestroom type | No. of rooms | No. of people | Notes |
|-----------------------------|--------------|---------------|-------|
| No accommodation facilities | | | |

Restaurants and Bars

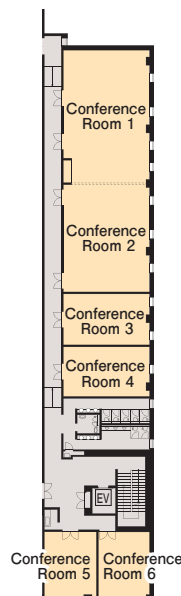
| Type | Number | Capacity | Notes |
|--------------|--------|----------|-------|
| ● Restaurant | | | |
| ● Bar | | | |
| ● Tea Lounge | | | |
| ● Shop | | | |

Main Floor Plan

[1F]



[2F]



Special Features

- Hall: used as a multipurpose hall by city residents. It can accommodate various events, such as school events, seminars and musical events.
- Conference rooms: The six small and large conference rooms are used for residents' clubs, seminars and various conferences.

Facilities/Notes

Room Notes

Hours

- Hall: 9:00 - 22:00

[Reservation dates for the large hall (lottery reception)]

The first day of the month a year before the date of use (the following weekday if the first day is a Saturday, a Sunday or a national holiday, or if the facility is closed the first day).

- Conference rooms: 9:00 - 21:00

[Reservation dates for conference rooms (lottery reception)]

Schedule: January 10 (reservations for April to September), July 10 (reservations for October to March)

*The following weekday if January 10 or July 10 is a Saturday, a Sunday or a national holiday.

Main Equipment for Loan or Rent

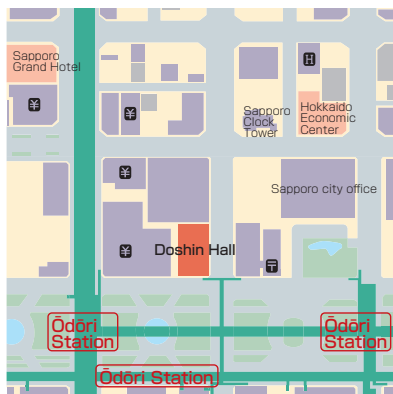
For rent: audio set (amplifier, cassette tape recorder), wireless microphone, microphone, mobile amplifier, projector, mobile screen, TV monitor, exhibition panel, power source for electrified instruments brought from outside, special power source.

Service

Universal Accessibility



Doshin Hall



- Address...Doshin Odori Bldg., 8F ,6, Odori Nishi 3, Chuo-ku, Sapporo
- Tel...+81-11-221-2422
- Fax...+81-11-221-2463
- URL...<https://www.doshin-acty.co.jp>
- Access
[Subway] 5 mins. walk from Odori Station
- Parking
No parking facilities

Convention Rooms

| Name | Area (m ²) | Ceiling | Floor load | Dinner (people) | Buffet (people) | School (people) | Theater (people) | Basic rate (¥) |
|-------------|------------------------|---------|------------|-----------------|-----------------|-----------------|------------------|----------------|
| Doshin Hall | | | | | | | | 700 (130,000) |

Basic charge for usage between the times 9:00~16:00. For charges in parentheses, please see details at right. Please contact each facility directly for specific rates.

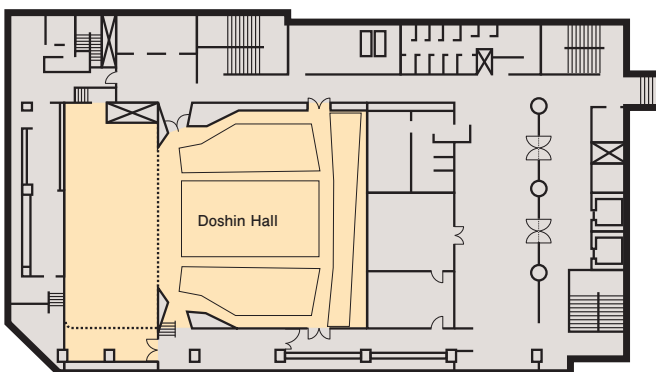
Hotel accommodation

| Guestroom type | No. of rooms | No. of people | Notes |
|-----------------------------|--------------|---------------|-------|
| No accommodation facilities | | | |

Restaurants and Bars

| Type | Number | Capacity | Notes |
|--|--------|----------|-------|
| No attached eating or drinking establishments. | | | |

Main Floor Plan [8F]



Special Features

This hall features the merit of being located right in the heart of the city. It is also adjacent to the Sapporo Clock Tower and Odori Park. This multipurpose hall in the center of Sapporo has excellent access to public transportation.

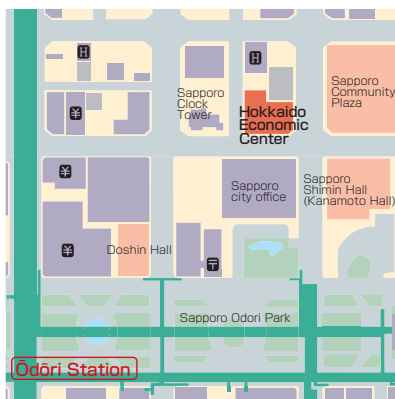
Facilities/Notes

Room Notes
Basic rates shown are for general functions not requiring an entrance fee, between the hours of 9:00~16:00. Different rental periods, such as morning, afternoon, night and all day, are also available. For details on use fees and other matters, feel free to contact us.

Service

■ Universal Accessibility





- Address...Kita 1 Nishi 2, Chuo-ku, Sapporo
Sapporo Center of Commerce and Industry, Finance Dept.
(contact, applications)
- Tel...+81-11-231-1355
- Fax...+81-11-222-5215
- URL...https://www.sapporo-cci.or.jp/web/service/ser_s.html
- Access
[Subway] 6 mins. walk from Odori Station on the Nanboku Line.
[JR] 10 mins. walk from Sapporo JR Station
[Taxi] 3 mins. ride from Sapporo JR Station
- Parking
No parking facilities.

Convention Rooms

| Name | Area (m ²) | Ceiling | Floor load | Dinner (people) | Buffet (people) | School (people) | Theater (people) | Basic rate (¥) |
|--------------------------|------------------------|---------|------------|-----------------|-----------------|-----------------|------------------|----------------|
| ● A Hall | [8F] 380 | | | | | (300) | 380 | (83,700) |
| ● B Hall | [8F] 359 | | | | | (292) | 380 | (78,300) |
| ● Conference Room 2 [8F] | 47 | | | | | 24 | | (14,400) |
| ● Conference Room 3 [8F] | 89 | | | | | 60 | | (26,100) |
| ● Conference Room 4 [8F] | 30 | | | | | 18 | | (11,700) |
| ● Conference Room 5 [7F] | 95 | | | | | 48 | | (25,200) |

The figure in the parentheses is the capacity when seats for three people are used.

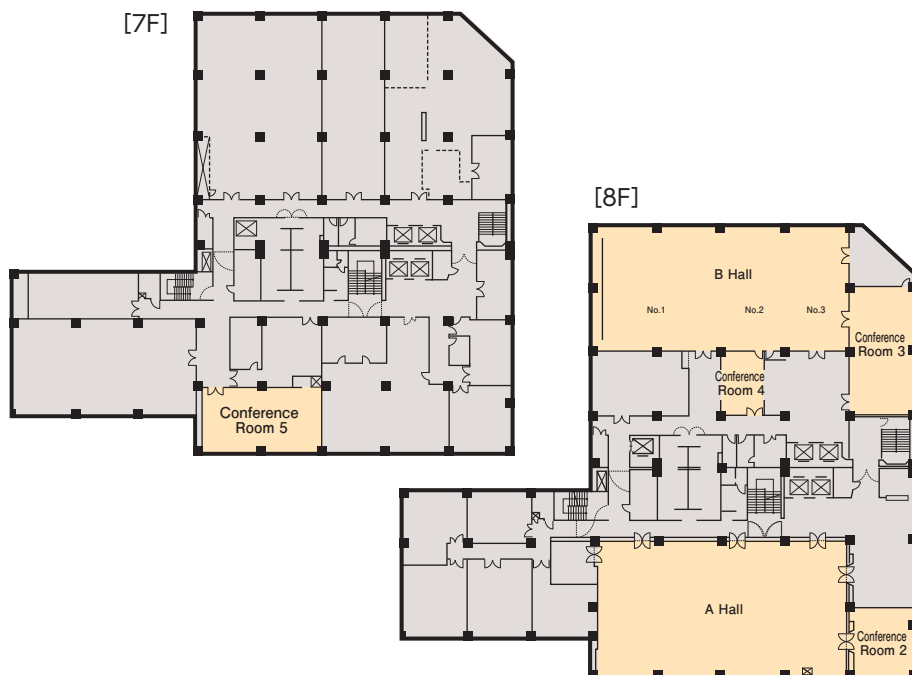
Hotel accommodation

| Guestroom type | No. of rooms | No. of people | Notes |
|-----------------------------|--------------|---------------|-------|
| No accommodation facilities | | | |

Restaurants and Bars

| Type | Number | Capacity | Notes |
|--------------|--------|----------|-------------|
| ● Restaurant | 1 | 40 | Restaurant |
| ● Bar | | | |
| ● Tea Lounge | 1 | 50 | Coffee shop |
| ● Shop | | | |

Main Floor Plan



Special Features

A general facility for the promotion of commerce and industry in Hokkaido, this building is located just to the east of the Clock Tower and north of the City Hall Building, and features exhibition halls, large and small conference rooms. It is conveniently located and readily accessible from Sapporo JR Station (10 mins. walk), Odori Subway Station (6 mins. walk), and city and private bus lines.

Facilities/Notes

Room Notes
The charges (before tax) shown are for members renting the facility between the hours of 9:00~17:00.



8F A Hall



7F Conference Room 5

New Otani Inn Sapporo



- Address... 1, Kita 2 Nishi 1, Chuo-ku, Sapporo
- Tel...+81-11-222-1111
- Fax...+81-11-222-5521
- URL...https://newotanisapporo.com
- E-mail...enkai@newotanisapporo.com

● Access

[Subway] 6 mins. walk from Sapporo Station on the Toho Line and Odori Station on the Nanboku Line .

[JR] 8 mins. walk from Sapporo JR Station

[Taxi] 5 mins. ride from Sapporo JR Station

● Parking

80 spaces, with fee: 600 yen/hour

Convention Rooms

| Name | Area (m ²) | Ceiling | Floor load | Dinner (people) | Buffet (people) | School (people) | Theater (people) | Basic rate (¥) |
|---------------------|------------------------|---------|------------|-----------------|-----------------|-----------------|------------------|----------------|
| ● Tsuru (Full Room) | 775 | 5.5m | | 500 | 600 | 500 | 1,000 | 1,600,000 |
| ● Tsuru (Higashi) | 380 | 5.5m | | 200 | 240 | 200 | 300 | 720,000 |
| ● Tsuru (Nishi) | 280 | 5.5m | | 150 | 180 | 150 | 200 | 640,000 |
| ● Tsuru (Naka) | 115 | 5.5m | | 70 | 80 | 70 | 100 | 240,000 |
| ● Hokuto Room | 184 | 2.6m | | 100 | 120 | 100 | 200 | 400,000 |
| ● Hokusei Room | 132 | 2.6m | | 70 | 80 | 70 | 120 | 280,000 |

Charges differ on Saturdays. Basic charges are for 8 hrs. usage, tax and service charge not included. Please contact each facility directly for specific rates.

Hotel accommodation

| Guestroom type | No. of rooms | No. of people | Notes |
|------------------|--------------|---------------|-------------------------|
| ● Japanese-style | 2 | 12 | |
| ● Suite | 1 | 2 | |
| ● Single | 40 | 40 | |
| ● Twin | 290 | 607 | (incl. 27 double rooms) |
| ● Other | 7 | 35 | |
| ● Total | 340 | 696 | |

Restaurants and Bars

| Type | Number | Capacity | Notes |
|--------------|--------|----------|----------------------------------|
| ● Restaurant | 1 | 150 | (including private dining rooms) |
| ● Bar | 1 | 40 | |
| ● Tea Lounge | 1 | 130 | |
| ● Shop | 1 | | |

Main Floor Plan [2F]



Tsuru (Full Room)



Hokuto Room

Special Features

Located in the center of Sapporo, this hotel is just a two minute-walk from the Sapporo Community Plaza. With a number of chain hotels in and outside of Japan, the hotel takes pride in its finely-tuned services. The highly skilled and helpful staff of the New Otani welcome guests with the hotel's unique atmosphere.

Facilities/Notes

■ Room Notes

In addition to the halls listed at left, there are nine other function halls ranging in size from 33 to 91 square meters.

■ Main Facilities

[Tsuru Room] Large screen, flag hanging hooks, BGM sound system, lighting system, spotlight, etc.

Service

■ Internet Usage



■ Language Services



■ Management Support



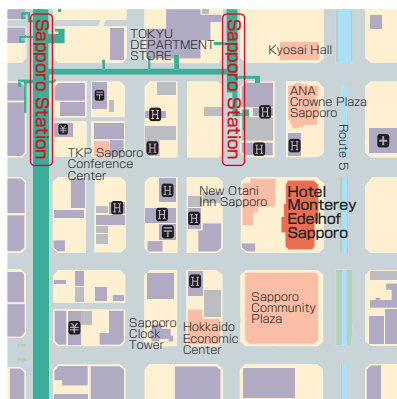
■ Universal Accessibility



■ Credit Cards Accepted



Hotel Monterey Edelfhof Sapporo



- Address...1, Kita 2 Nishi 1, Chuo-ku, Sapporo
- Tel...+81-11-242-7111
- Fax...+81-11-232-1212
- URL...<https://www.hotelmonterey.co.jp>
- Access
- [Subway] 3 mins. walk from Sapporo Subway Station, 7 mins. walk from Odori Station.
- [JR] 5 mins. walk from Sapporo JR Station
- [Taxi] 2 mins. ride from Sapporo JR Station
- Parking
- 50 spaces. Overnight parking fee 1,500 yen (tax included).

Convention Rooms

| Name | Area (m ²) | Ceiling | Floor load | Dinner (people) | Buffet (people) | School (people) | Theater (people) | Basic rate (¥) |
|-----------------|------------------------|---------|----------------------|-----------------|-----------------|-----------------|------------------|----------------|
| ● Belvedere | [13F] 493 | 4.7m | 360kg/m ² | 250 | 320 | 300 | 500 | 960,000 |
| ● Lucerna | [12F] 384 | 4.3m | 360kg/m ² | 180 | 250 | 220 | 320 | 640,000 |
| ● Berg | [12F] 262 | 3.7m | 360kg/m ² | 120 | 160 | 150 | 260 | 480,000 |
| ● Wagner House | [1F] 363 | 4.5m | 300kg/m ² | 110 | 150 | 80 | 150 | 640,000 |
| ● Himmel | [22F] 210 | 3.3m | 300kg/m ² | 80 | 100 | 60 | | 480,000 |
| ● Rilke/Moser | [12F] 56 | 3.8m | 300kg/m ² | 20 | 30 | 24 | 40 | 80,000 |
| ● Danube/Linz | [13F] 89 | 3.9m | 300kg/m ² | 40 | 60 | 40 | 60 | 160,000 |
| ● Mahler/Brahms | [12F] 101 | 4.0m | 300kg/m ² | 40 | 60 | 40 | 60 | 160,000 |

Basic charges are for 8 hrs. usage. Tax and service (10%) charged separately. Please contact each facility directly for specific rates.

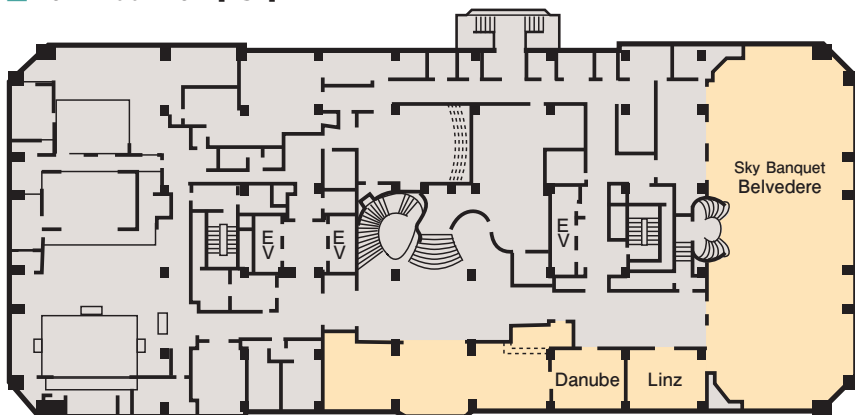
Hotel accommodation

| Guestroom type | No. of rooms | No. of people | Notes |
|------------------|--------------|---------------|----------------------------|
| ● Japanese-style | | | |
| ● Suite | | | |
| ● Single | 51 | 51 | |
| ● Twin | 129 | 258 | Some convertible to triple |
| ● Other | 1 | 2 | Luxury room |
| ● Total | 181 | 311 | |

Restaurants and Bars

| Type | Number | Capacity | Notes |
|--------------|--------|----------|-------------------|
| ● Restaurant | 2 | 140 | Japanese, Chinese |

Main Floor Plan [13F]



Special Features

The hotel's interior is designed around the theme of nineteenth-century Vienna. All guestrooms are located on the 16th floor and above, 60 meters or higher above the ground, commanding a fine view.

Facilities/Notes

Room Notes

Convention venues are situated on the 12th and 13th floors. Along with modern amenities, guests can enjoy a panoramic view of Sapporo and a fascinating night view from the Sky Banquet Room, at a height of 60 meters.

Main Equipment for Loan or Rent

Sound system, lighting system, electric screen (large and medium-sized halls only).

Other Facilities

14th floor [Karlovy Vary Spa] Large bath, open-air bath, sauna [Stone Spa Yu-no-Hana].

Service

Internet Usage

LAN connection available in function rooms

Universal Accessibility



Credit Cards Accepted



※(cards cannot be used for convention room rental)



Hotel Monterey Sapporo



- Address...3, Kita 4 Higashi 1, Chuo-ku, Sapporo
- Tel...+81-11-232-7111
- Fax...+81-11-242-2424
- URL...<https://www.hotelmonterey.co.jp>
- Access
- [Subway] 2 mins. walk from Sapporo Subway Station on the Toho Line.
- [JR] 5 mins. walk from Sapporo JR Station south exit
- Parking
- About 60 spaces. Overnight parking 1,500 yen.

Convention Rooms

| Name | Area (m ²) | Ceiling | Floor load | Dinner (people) | Buffet (people) | School (people) | Theater (people) | Basic rate (¥) |
|------------------------|------------------------|---------|----------------------|-----------------|-----------------|-----------------|------------------|----------------|
| ● Victoria Room [2F] | 384 | 3.8m | 360kg/m ² | 250 | 280 | 240 | 320 | 640,000 |
| ● Kensington Room [1F] | 308 | 4.0m | 360kg/m ² | 160 | 200 | 180 | 240 | 480,000 |
| ● Mayfair Hall [2F] | 110 | 3.7m | 300kg/m ² | 60 | 70 | 60 | 80 | 240,000 |

Basic rates are for 8 hours' usage. Tax and service (10%) charged separately. Please contact each facility directly for specific rates.

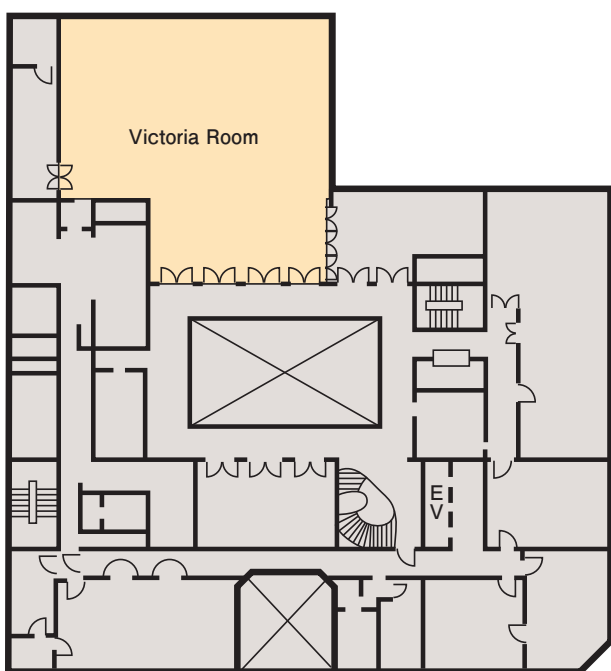
Hotel accommodation

| Guestroom type | No. of rooms | No. of people | Notes |
|------------------|--------------|---------------|-------------------------|
| ● Japanese-style | 2 | 4 | |
| ● Suite | 1 | 2 | |
| ● Single | 39 | 39 | |
| ● Twin | 208 | 416 | 142 Standard, 66 Deluxe |
| ● Total | 250 | 461 | |

Restaurants and Bars

| Type | Number | Capacity | Notes |
|--------------|--------|----------|---|
| ● Restaurant | 1 | 30 | Private rooms available (for up to 20 people) |

Main Floor Plan [2F]



Special Features

The hotel, inspired by the traditional designs of early modern England, boasts an impressive façade colored king's yellow and an indoor English "Winter Garden", around the atrium of which this European-style hotel is centered.

Facilities/Notes

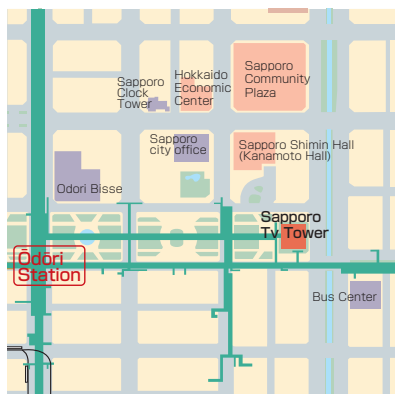
- Room Notes
- Each banquet room is elegantly adorned with paintings, traditional English antiques and gobelin tapestries.
- Main Equipment for Loan or Rent
- Electric screen, video projector, etc.

Service

- Internet Usage
 - High-speed wireless LAN (all rooms)
 - Language Services
 - English-speaking staff available
 - Universal Accessibility
 -
 - Credit Cards Accepted
 -
- ※ (cards cannot be used for convention room rental)



Sapporo TV Tower



- Address...Odori Nishi 1, Chuo-ku, Sapporo
- Tel...+81-11-241-1131
- Fax...+81-11-271-3680
- URL...<http://www.tv-tower.co.jp>
- Access
[Subway] 3 mins. walk from Odori Subway Station
- Parking
No parking facilities.

Convention Rooms

| Name | Area (m ²) | Ceiling | Floor load | Dinner (people) | Buffet (people) | School (people) | Theater (people) | Basic rate (¥) |
|------------------|------------------------|---------|------------|-----------------|-----------------|-----------------|------------------|-----------------------|
| ● Suzuran [2F] | 95.7 | 298cm | | 50 (5 tables) | | 40 | 60 | 48,600/day (5,400/hr) |
| ● Hamanasu [2F] | 72.72 | 298cm | | 36 (3 tables) | | 30 | 40 | 41,400/day (4,600/hr) |
| ● Acacia [2F] | 66.11 | 298cm | | 36 (3 tables) | | 30 | 40 | 41,400/day (4,600/hr) |
| ● Shirakaba [2F] | 95.86 | 298cm | | 50 (5 tables) | | 40 | 60 | 48,600/day (5,400/hr) |
| ● Lilac [2F] | 72.72 | 298cm | | 40 (4 tables) | | 30 | 40 | 50,400/day (5,600/hr) |

Tax included. Please contact each facility directly for specific rates.

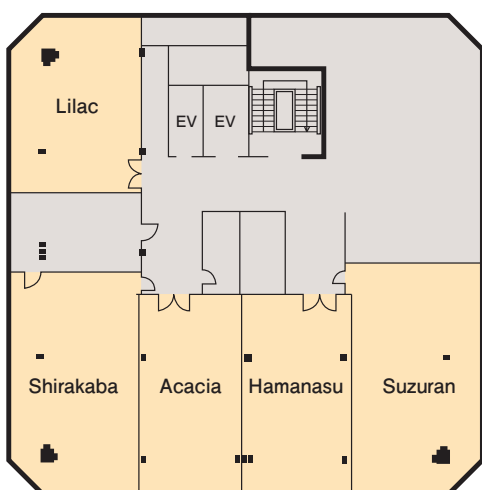
Hotel accommodation

| Guestroom type | No. of rooms | No. of people | Notes |
|-----------------------------|--------------|---------------|-------|
| No accommodation facilities | | | |

Restaurants and Bars

| Type | Number | Capacity | Notes |
|---|--------|----------|-------|
| Various banquet plans are available. Please contact us for details. | | | |




Main Floor Plan [2F]



Special Features

Standing at the junction of Odori Park and the Sosei River, the Sapporo TV Tower is a primary city landmark, with a fine view over the city center. The TV Tower's second floor (corresponding in a normal building to the 4th or 5th floor) contains several function rooms suitable for a variety of purposes. A variety of party and function plans are available, featuring Hokkaido foods. Guests from within Sapporo, and around or outside Hokkaido, can find their way easily to this location. Our staff awaits you, for the use of our venue as a conference hall or banquet room.

Facilities/Notes

- Room Notes
 - No service elevator. Basic sound system available.
- Service
- Internet Usage
 - No fixed internet connection.
 - Temporary connection available (please consult staff for details)
- Management Support
 - Upon request, staff can assist with running the function.
- Universal Accessibility
 -   
- Credit Cards Accepted
 - (no credit card payments)