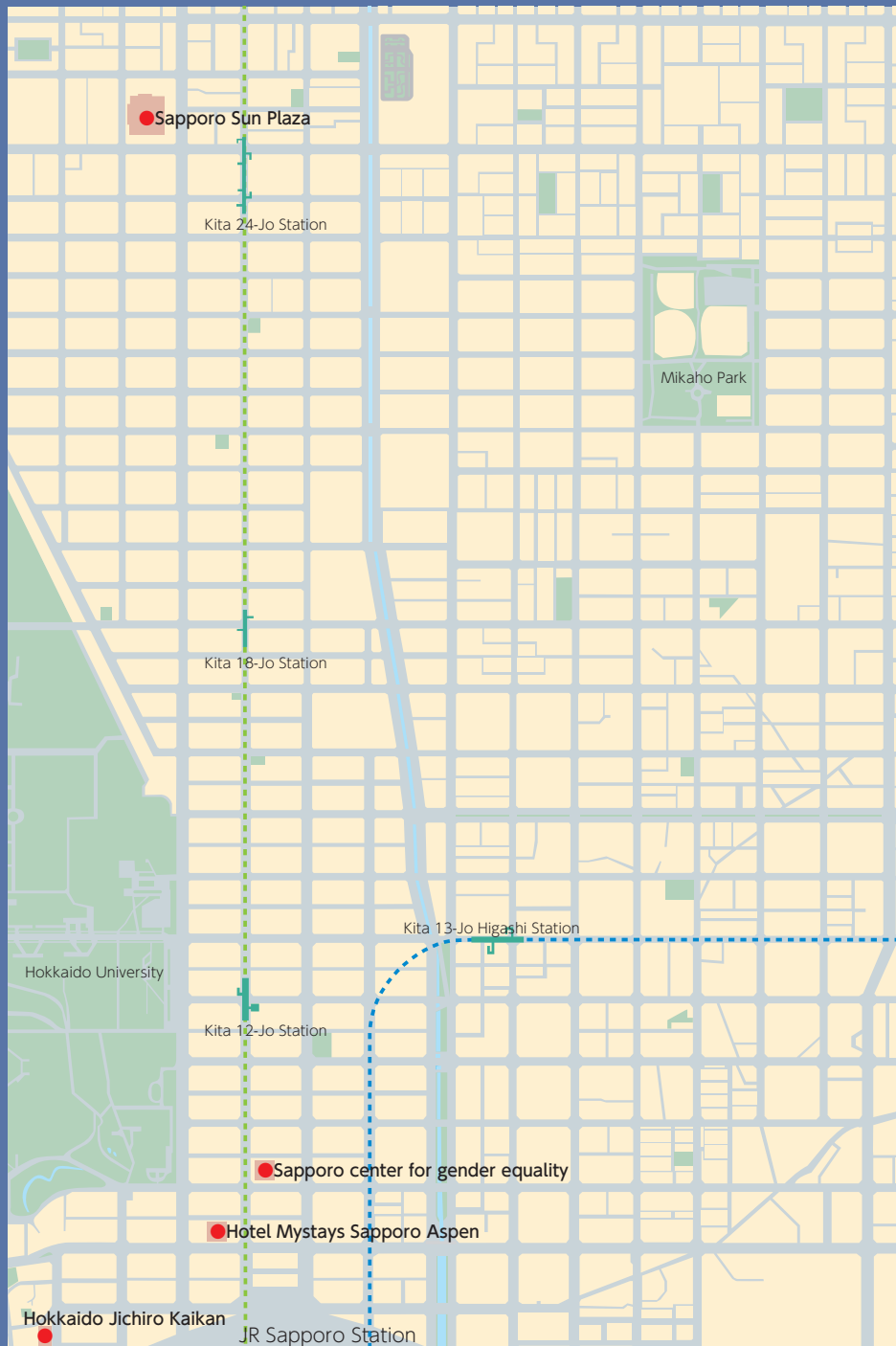
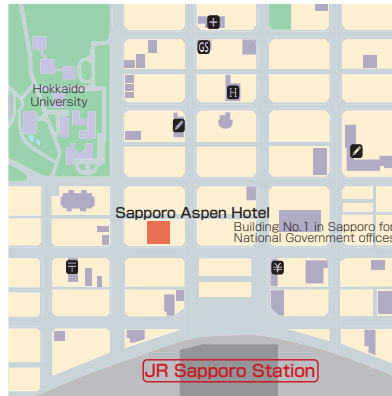


Central Part North Area

Hotel Mystays Sapporo Aspen	5
Sapporo Sunplaza	6
Hokkaido Jichiro Kaikan	7
Sapporo Center for Gender Equality	8



Hotel Mystays Sapporo Aspen



- Address...5, Kita 8 Nishi 4, Kita-ku, Sapporo
- Tel...+81-11-700-2111
- Fax...+81-11-700-2002
- E-mail...sapporo-aspen@mystays.com
- URL...<https://www.mystays.com/hotel-mystays-sapporo-aspen-hokkaido/>
- Access
 - [Subway] 5 mins. walk from Sapporo Subway Station on the Nanboku Line, 10 mins. walk from Sapporo Subway Station on the Toho Line.
 - [JR] 2 mins. walk from Sapporo JR Station north exit.
- Parking
50 spaces, with fee

Convention Rooms

Name	Area (m ²)	Ceiling	Floor load	Dinner (people)	Buffet (people)	School (people)	Theater (people)	Basic rate (¥)
Aspen [2F]	347	2.8m		190	220			47,000
Aspen A [2F]	174	2.8m		80	100	120	150	30,000
Aspen B [2F]	173	2.8m		70	80	60	100	24,000
Elm [2F]	71	2.8m		40	45	39	70	16,000
Maple [2F]	54	3m		30	35	30	45	13,000
Acacia [2F]	52	3m		30	35	30	45	13,000

Basic rates are for 2 hours' usage, tax included. Rates may change. Please contact each facility directly for specific rates.

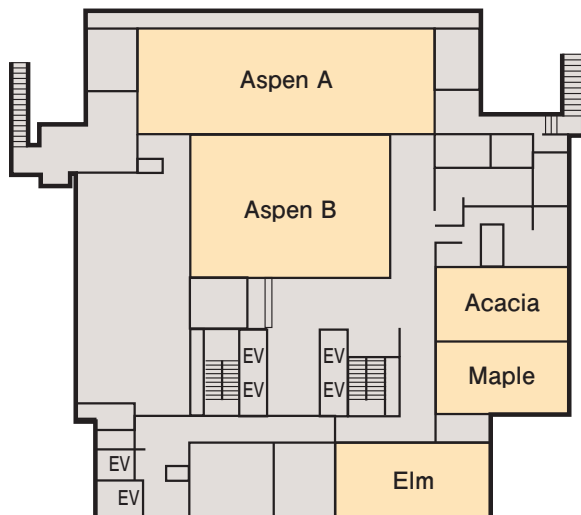
Hotel accommodation

Guestroom type	No. of rooms	No. of people	Notes
Double	68	136	
Single	12	12	
Twin	205	410	
Other	20	74	quadruple rooms, semi-double, double
Total	305	632	

Restaurants and Bars

Type	Number	Capacity	Notes
Bar			
Tea Lounge			
Shop	1		

Main Floor Plan [2F]



Special Features

Just 2 mins. walk from the north gate of Sapporo JR Station, the central access point of Hokkaido, the hotel is a serene space surrounded by nature, within reach of the famous row of poplar trees of Hokkaido University. We offer a convenient and pleasant stay for business travelers, and an enjoyable place for tourists to relax.

Facilities/Notes

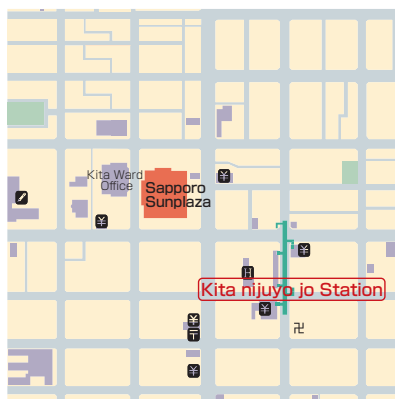
- Main Equipment for Loan or Rent(with fee)
Video deck, TV, screen, LCD projector, OHP, karaoke, etc.
- Other Facilities
● Rooms for banquets.

Service

- Language Services
- Universal Accessibility
- Credit Cards Accepted



Sapporo Sunplaza



- Address...Kita 24 Nishi 5, Kita-ku, Sapporo
 - Tel...+81-11-758-3111
 - Fax...+81-11-758-3119
 - URL...<https://www.s-sunplaza.or.jp/>
 - Access
 - [Subway] 3 mins. walk from Kita 24-jo Station on the Nanboku Line.
 - [JR] About 36 mins. ride by Rapid Airport Express from New Chitose Airport to Sapporo JR Station.
 - [Taxi] 10 mins. ride from Sapporo JR Station.
 - Parking
- 203 spaces, with fee: 300 yen/hour. Special rate for conference and banquet guests: 120 yen/ 2 hours.

Convention Rooms

Name	Area (m ²)	Ceiling	Floor load	Dinner (people)	Buffet (people)	School (people)	Theater (people)	Basic rate (¥)
● Sunplaza Hall								506 112,752
● Kinshi Room [2F]	452	5.4m	360kg/m ²	300	450	380	630	32,400
● Takasago Room [2F]	276	2.8m	360kg/m ²	150	150	180	320	19,000
● Gyokuyo Room [2F]	235	2.8m	360kg/m ²	120	120	150	270	17,000
● Heian Room [2F]	130	2.8m	360kg/m ²	60	60	80	140	9,800
● Matsu・Take [3F]	51	2.5m	360kg/m ²	20	20	25	50	4,600
● Ume [3F]	41	2.5m	360kg/m ²	20	30	25	40	4,100
● Fureai Hiroba [1F]	290		360kg/m ²					43,000 1Day

Tax included. Rates current as of April 1st, 2014. Please contact each facility directly for specific rates.

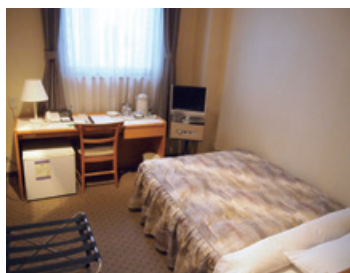
Hotel accommodation

Guestroom type	No. of rooms	No. of people	Notes
● Japanese-style			
● Suite			
● Single	30	30	
● Twin	27	54	
● Other	1	2	
● Total	58	86	

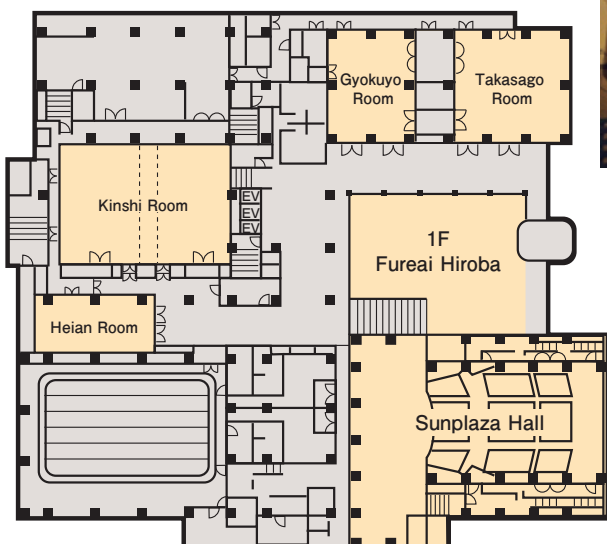


Restaurants and Bars

Type	Number	Capacity	Notes
● Restaurant	1	110	Japanese, Chinese and Western
● Bar			
● Tea Lounge			
● Shop			



Main Floor Plan [2F]



Special Features

This hotel features convenient access, standing only three minutes' walk from Kita 24-jo Subway Station on the Nanboku Line, and near the campus of Hokkaido University. The hotel prides itself on its reasonable rates, cleanliness, and kindness towards guests. Universally accessible rooms are available.

Sunplaza Hall (fixed seating), capacity 506 people. Basic rates shown are for one hour's use between 9am and 5pm. The rate shown for the Fureai Hiroba (communication space) is for full-day use.

Facilities/Notes

Room Notes

The rate for Sunplaza Hall is for weekday use, 9am to 9pm. The Saturday/Sunday/Holiday rate for the same time period is 150,336 yen. Please contact the facility directly for specific rates.

Main Facilities

[Kinshi Room] Screen (large) 2.4 x 7.4m (small) 2.3 x 1.8m, sound equipment, lights, BGM, sound recording equipment, adjustable lighting, movable telephone. [Takasago Room] Screen (small) 2.3 x 1.8m, sound equipment, lights, BGM, sound recording equipment, adjustable lights, movable telephone. [Gyokuyo Room] Screen (small) 2.3 x 1.8m, sound equipment, lights, BGM, sound recording equipment, adjustable lights, movable telephone. [Heian Room] Screen 1.5 x 1.7cm, sound equipment, lights, BGM, sound recording equipment, adjustable lights, movable telephone. [Matsu, Take] Movable telephone. [Ume] Movable telephone.

Main Equipment for Loan or Rent

Microphones (wireless, pin, etc.), OHP, blackboard, whiteboard, podium, lecture stand, screen, laser pointer, TV and video, video projector, slide projector, panels, etc.

Other Facilities

- Heated swimming pool (25 meters, 7 lanes).

Service

Internet Usage

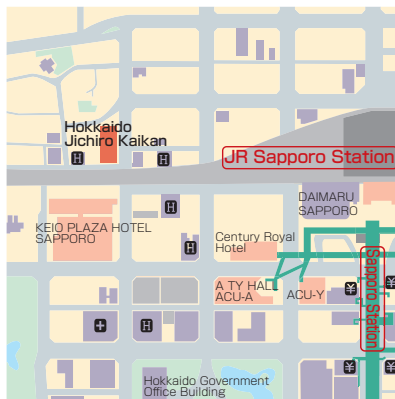


Universal Accessibility



Credit Cards Accepted





- Address...5-3, Kita 6 Nishi 7, Kita-ku, Sapporo
- Tel...+81-11-747-1457
- Fax...+81-11-747-6828
- URL...<http://h-jichirokaikan.jp/>
- Access
- [Subway] 8 mins. walk from Sapporo Subway Station on the Nanboku Line.
- [JR] 6 mins. walk from Sapporo JR Station west ticket gate.
- Parking
- no parking facilities.

Convention Rooms

Name	Area (m ²)	Ceiling	Floor load	Dinner (people)	Buffet (people)	School (people)	Basic rate (summer)	Basic rate (winter)
● Large Hall [5F]	499					360	84,000	92,000
● Conference Room 3 [5F]	39					24	14,000	15,000
● 4F Hall [4F]	304					252	72,000	78,500
● Conference Room 4 [4F]	71					48	21,000	23,000
● Conference Room 5 [4F]	49					28	15,000	16,000
● Medium Hall [3F]	285					150	60,000	65,500

Basic rates are for weekdays 9:00~17:00, for 8 hours' usage. Summer: April~Oct. Winter: Nov.~March. Tax not included. Please contact each facility directly for specific rates.

Hotel accommodation

Guestroom type	No. of rooms	No. of people	Notes
No accommodation facilities			

Restaurants and Bars

Type	Number	Capacity	Notes
● Restaurant	1	40	Ramen noodle restaurant [Tsukimiken] 1F
● Bar			
● Tea Lounge			
● Shop			

Special Features

The hall is just 6 mins. walk from Sapporo JR Station, and features full facilities and simple access.

Facilities/Notes

- Main Facilities
- Microphone, white board, 25 inch video, OHP, overhead camera, slide machine, screen, LCD projector, cassette tape deck, laser pointer, certificate tray, LAN cable, etc.
- Other Facilities
- Baby seats in the 4F and 5F women's restrooms.
- Wheelchair-accessible elevator.
- Sloped entrance walkway.
- Wheelchair-accessible toilet on floor B1.

Service

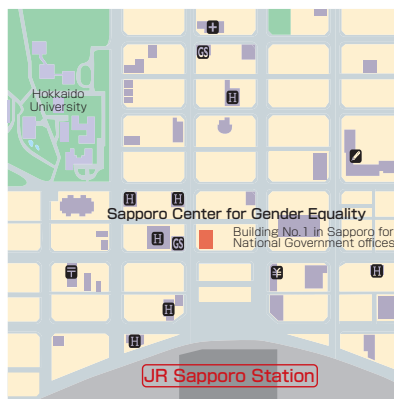
Fax and copy machines are available weekdays from 9:00~17:00.

Universal Accessibility



Main Floor Plan





●Address...Sapporo L-Plaza, Kita 8 Nishi 3, Kita-ku, Sapporo

●Tel...+81-11-728-1222

●Fax...+81-11-728-1229

●URL...<http://www.danjo.sl-plaza.jp>

●Access

[Subway] 7 mins. walk from Sapporo Subway Station on the Nanboku Line, 10 mins. walk from Sapporo Subway Station on the Toho Line.

[JR] 3 mins. walk from Sapporo JR Station north exit

●Parking

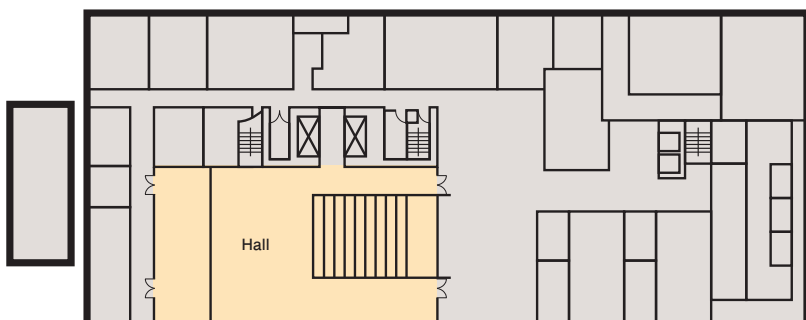
Sapporo L-Plaza, public parking, 100 yen/20 min. 25 general parking spaces available (no special parking for this facility)

Convention Rooms

Name	Area (m ²)	Ceiling	Floor load	Dinner (people)	Buffet (people)	School (people)	Theater (people)	Basic rate (¥)
●Hall [3F]	448	6.5m						320 See below

Morning rate (9:00~12:00): 12,100 yen. Afternoon rate (13:00~17:00): 16,200 yen. Evening rate (18:00~22:00): 16,200 yen. All day rate (9:00~22:00): 35,600 yen. Tax included. Please contact each facility directly for specific rates.

Main Floor Plan [2F]



Special Features

The Sapporo Center for Gender Equality is a facility which works on various fronts for the realization of gender equality in society. It can be used for speaking events and group performances. Due to the building structure, guests are kindly requested to refrain from activities causing vibration and a heavy bass sound. A variety of equipment such as lighting is available for use for a fee. No food or drink is allowed. When used for profit or by groups requiring an entrance or participation fee of 2001 yen or more, there will be an extra charge.

Facilities/Notes

Room Notes

[Number of uses allowed] When one group uses the facility multiple times in one month, the following rules apply: 1) Continuous use is allowed for a maximum of 4 days. 2) Periodic use is allowed a maximum of once a week. However, when an application has been made a month or more in advance, these limits may be exceeded.

[Usage not allowed] 1) When the contents of the usage may harm the public good. 2) When it is thought that the facilities or equipment may be harmed or lost during usage. 3) Usage for banquets or involving the drinking of alcohol. 4) Usage for events such as weddings or funerals. 5) Usage involving religious proselytizing. 6) Usage for sales events (with the exception of public sales events for the purpose of charity, by groups with the support, backing or leadership of the city)

Main Equipment for Loan or Rent

[Items with fee] Lighting equipment (Basic lighting set, mirror ball), projecting equipment (projector, slide projector, digital presenter, screen, recording system), hall equipment (gold screen, sound reflecting board), musical equipment (grand piano).

[Items without fee] Long table, pipe chairs, flat stand, red cloth, mats, floor cloth, triangle stand, music stands, podium, speaker's stand, flower stand, side stand, conductor's stand, scroll holder, wooden stand, box-shaped supports, music lights, wireless microphone, microphone with cable, pin microphone, partition panel, hanging sign panel, raised panels, white board.

Service

Management Support

Each group may have a 30 minute pre-viewing and explanation of the facilities and equipment, at a time when it is not in use. Please contact the center beforehand, if this service is needed.

Universal Accessibility



Ostomate-friendly toilet, Braille information board.