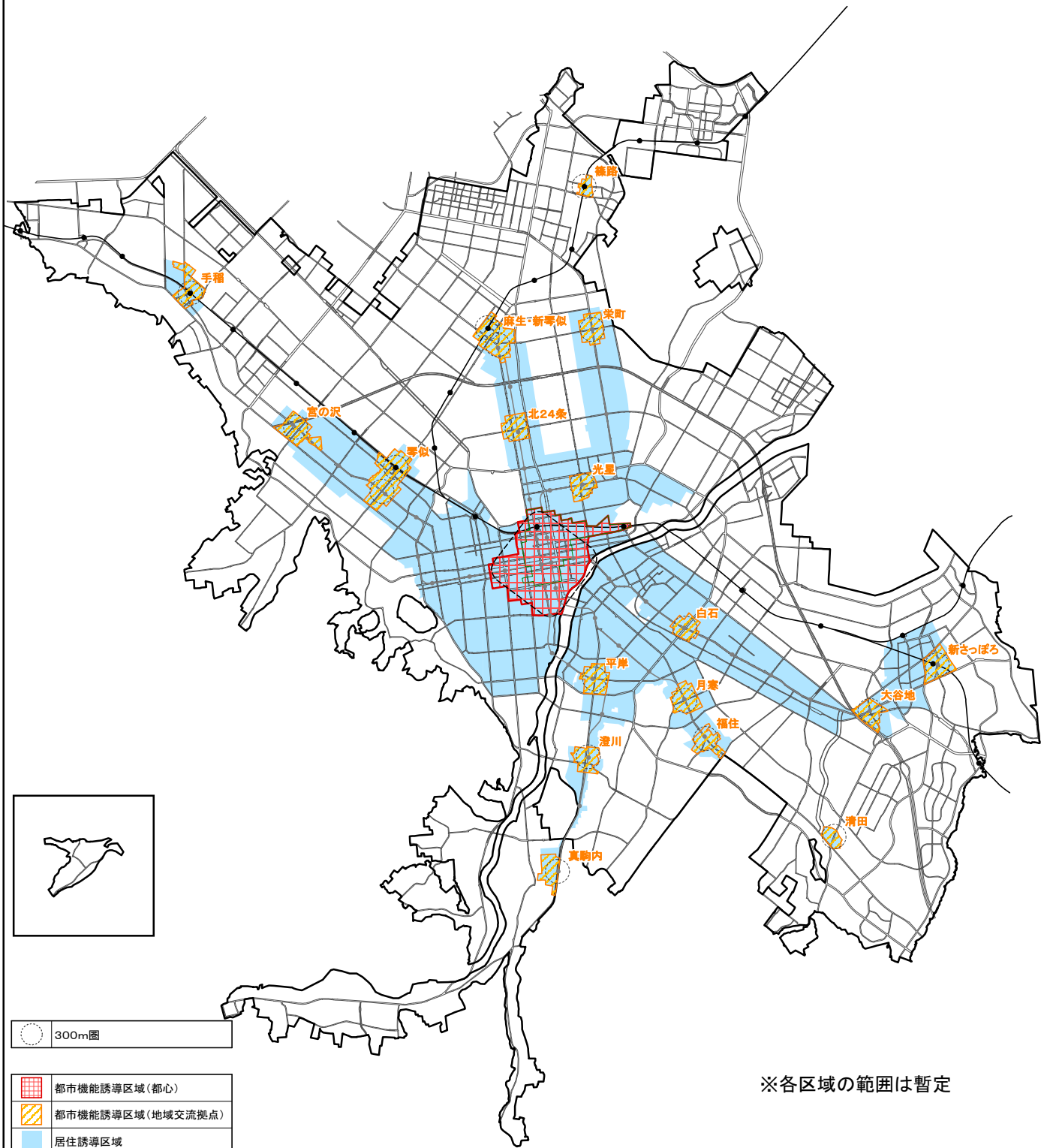


居住誘導区域及び都市機能誘導区域（案）



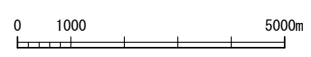
※各区域の範囲は暫定



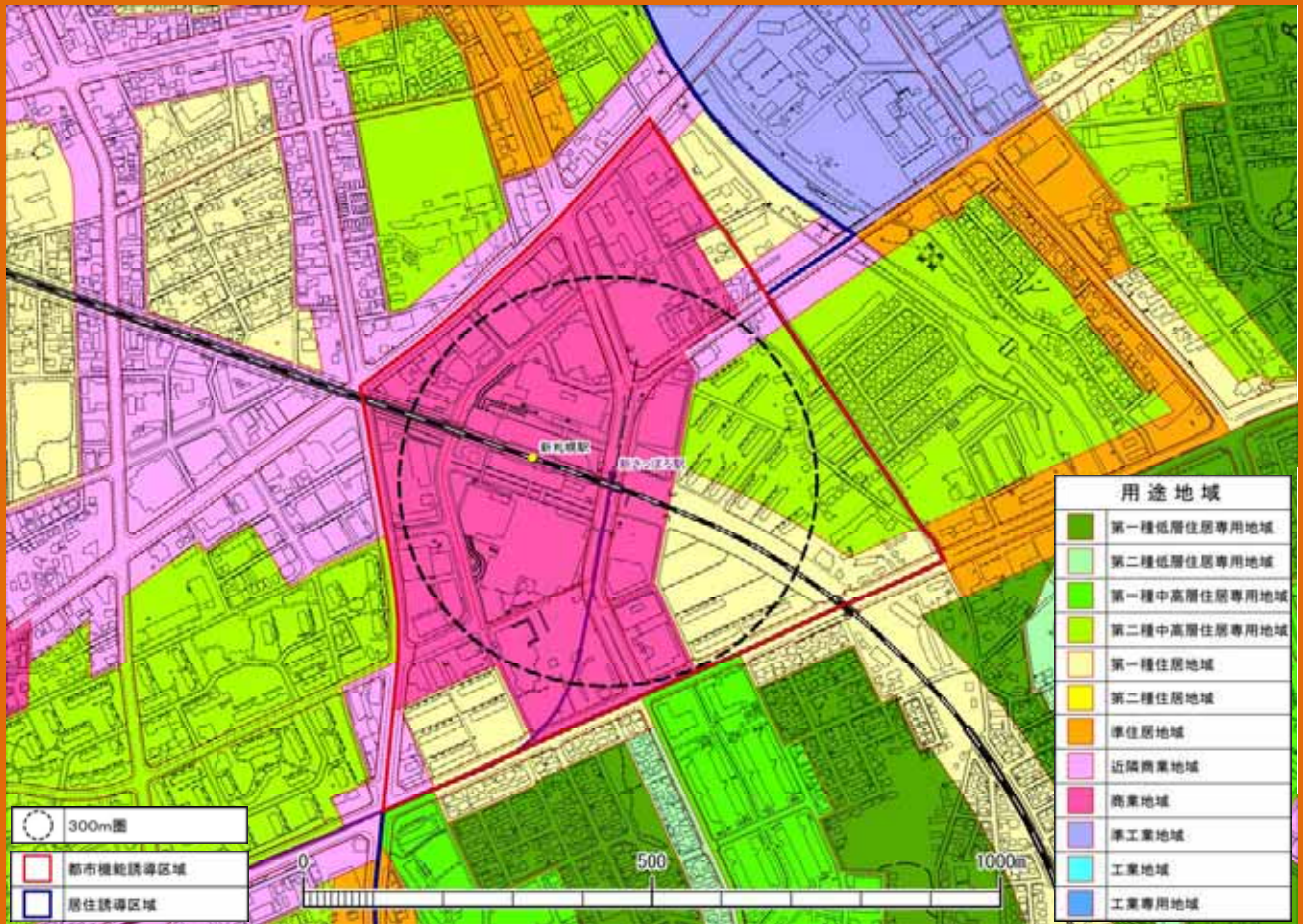
300m圏

- 都市機能誘導区域（都心）
- 都市機能誘導区域（地域交流拠点）
- 居住誘導区域
- 都市再生緊急整備地域
- 都心

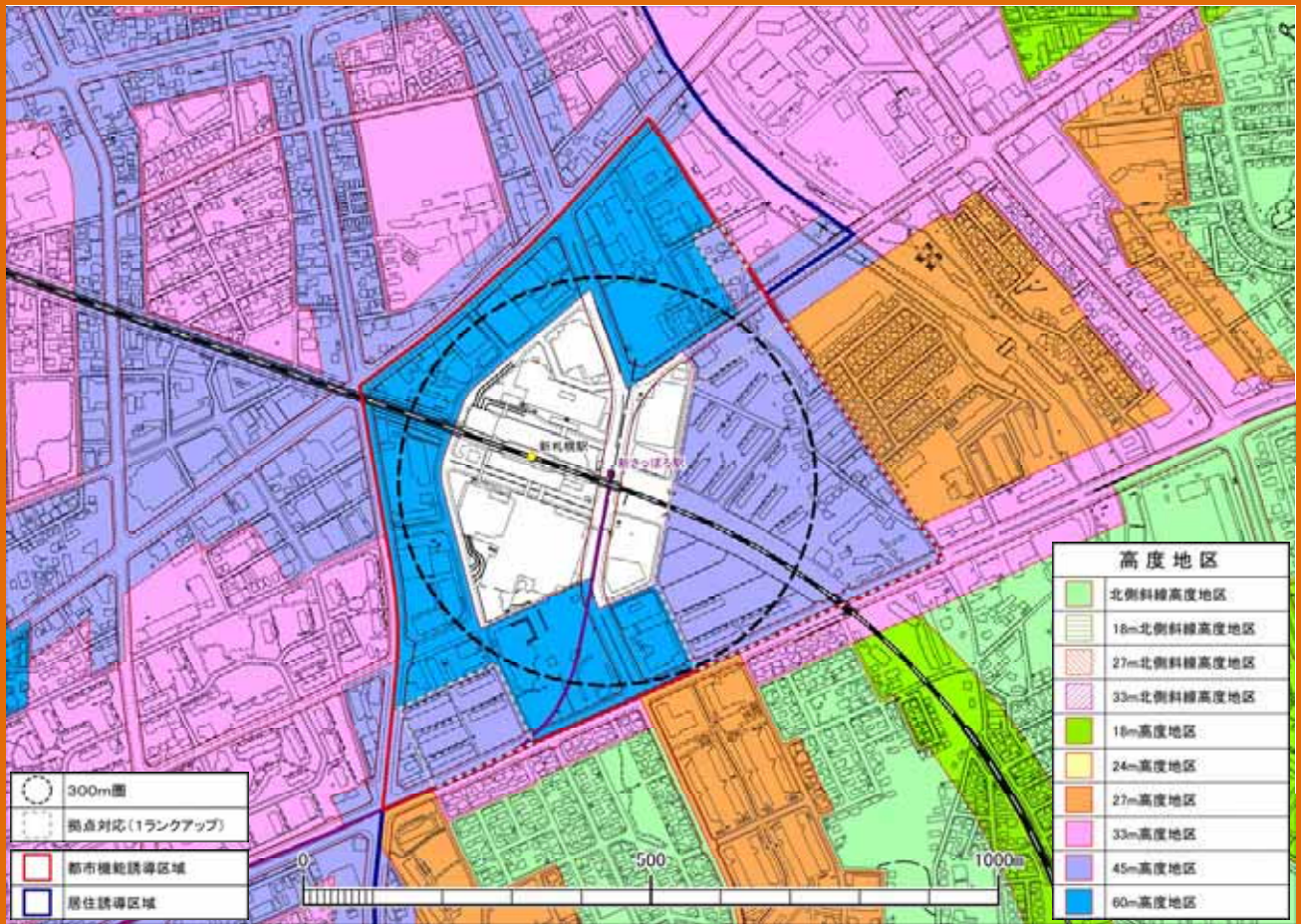
- 市街化区域
- JR
- 地下鉄



1 用途地域



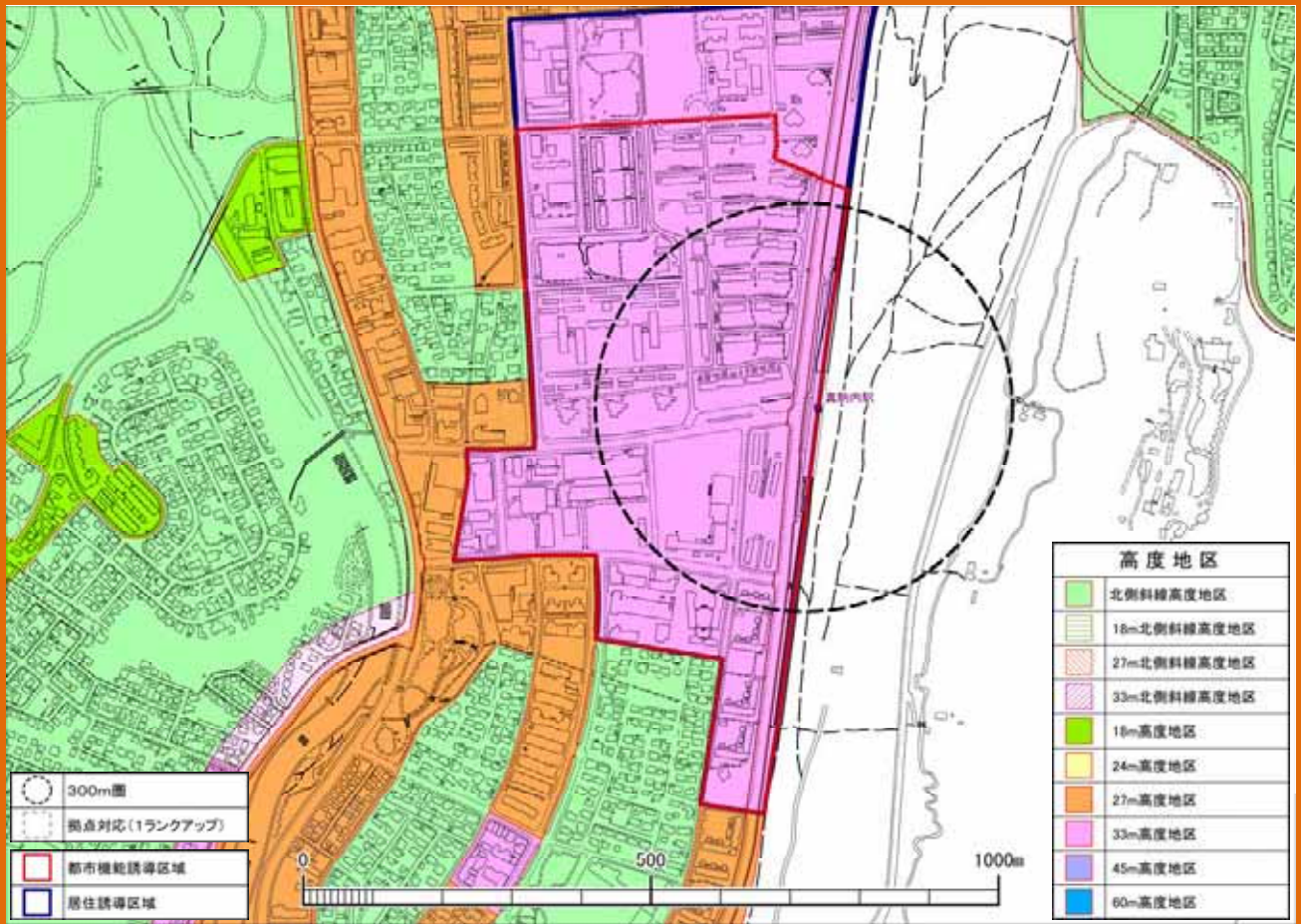
2 高度地区



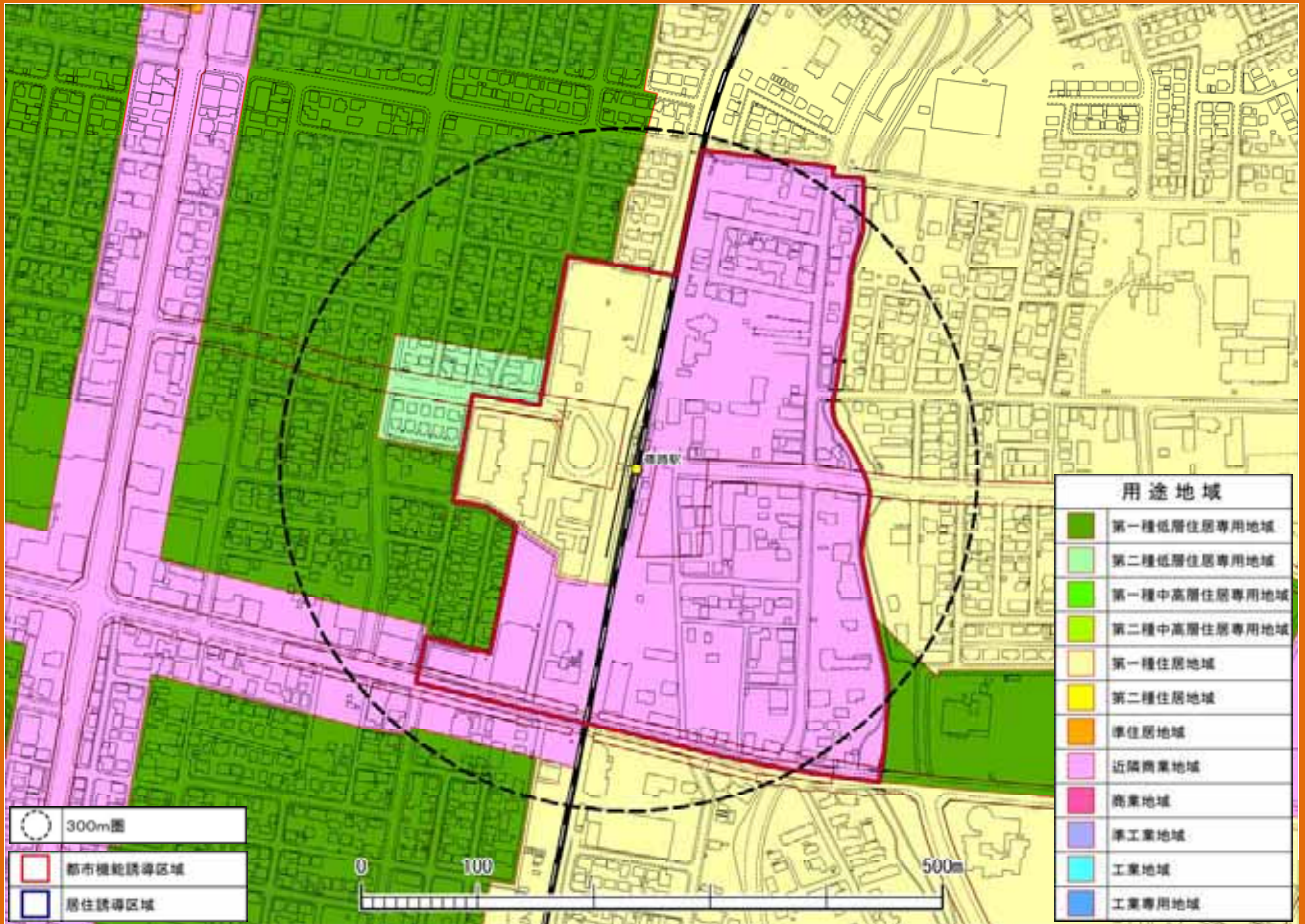
1 用途地域



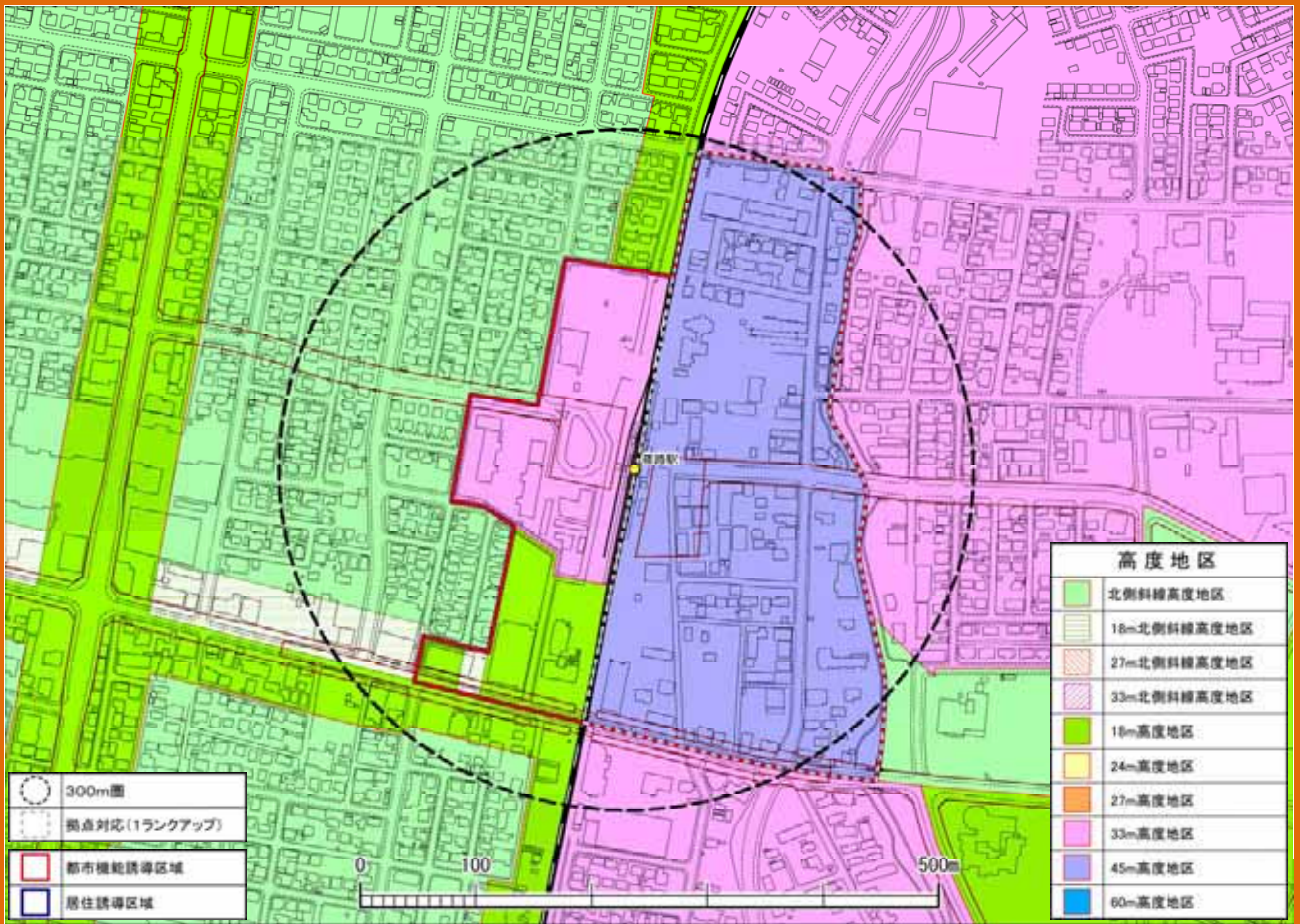
2 高度地区



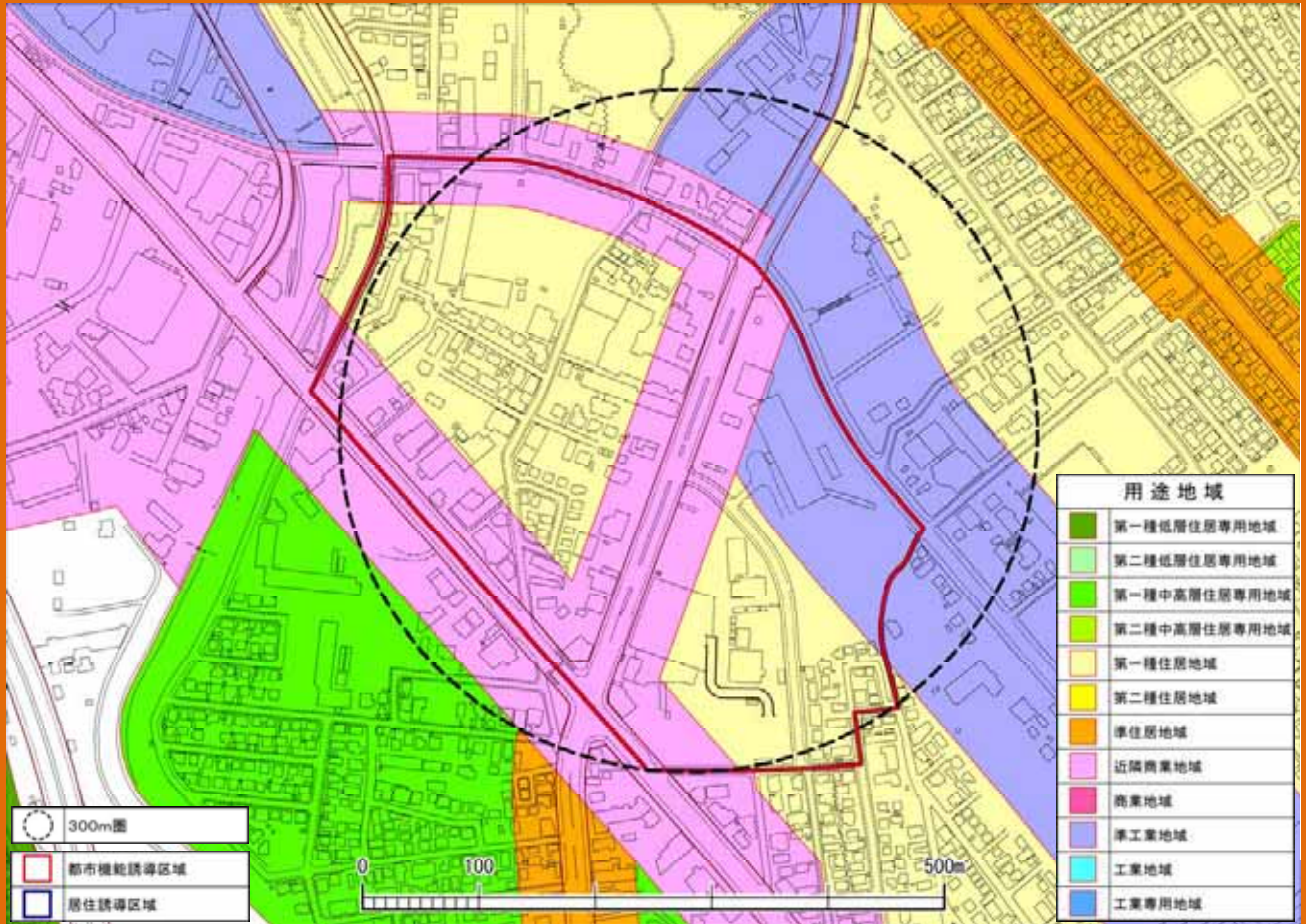
1 用途地域



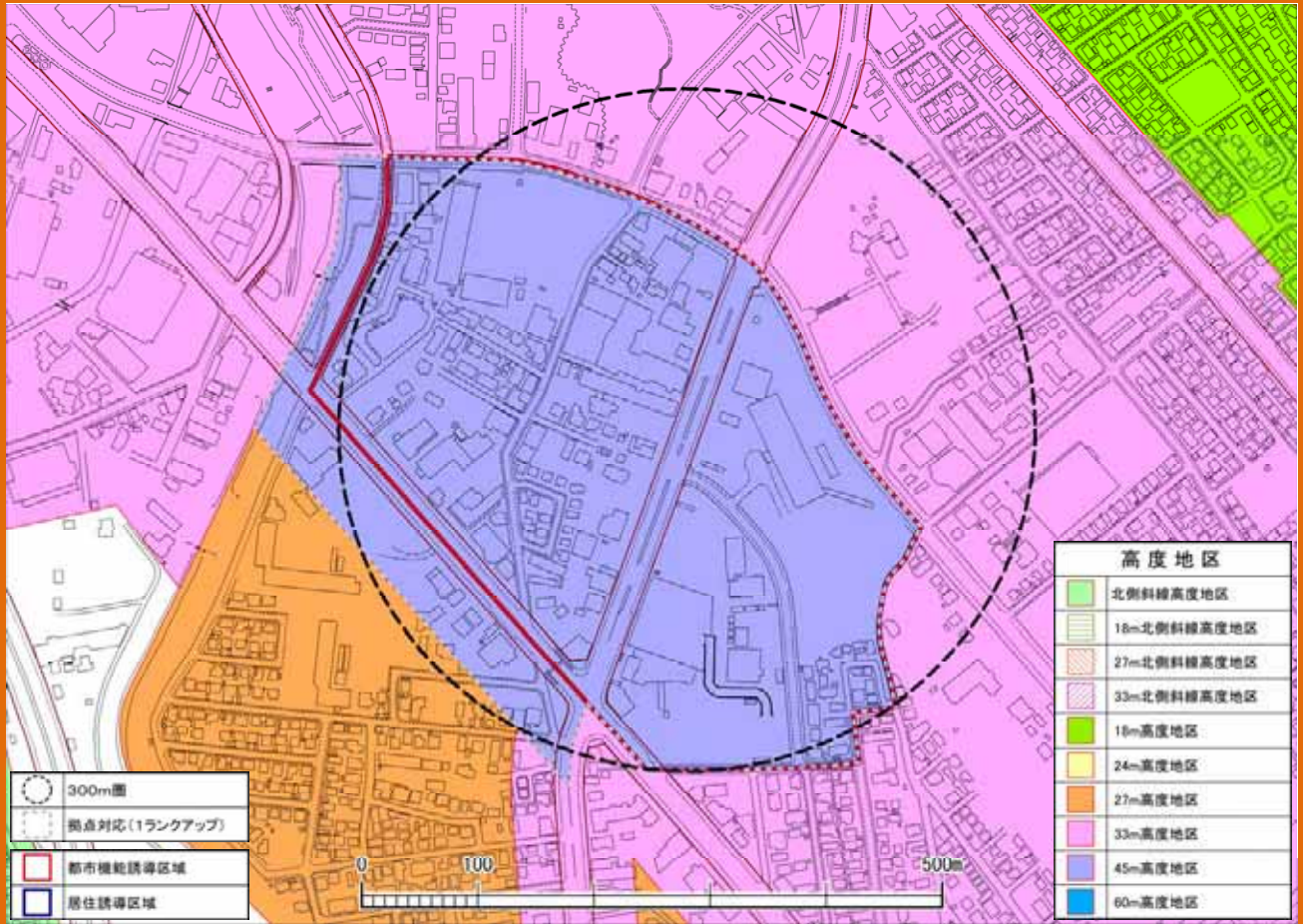
2 高度地区



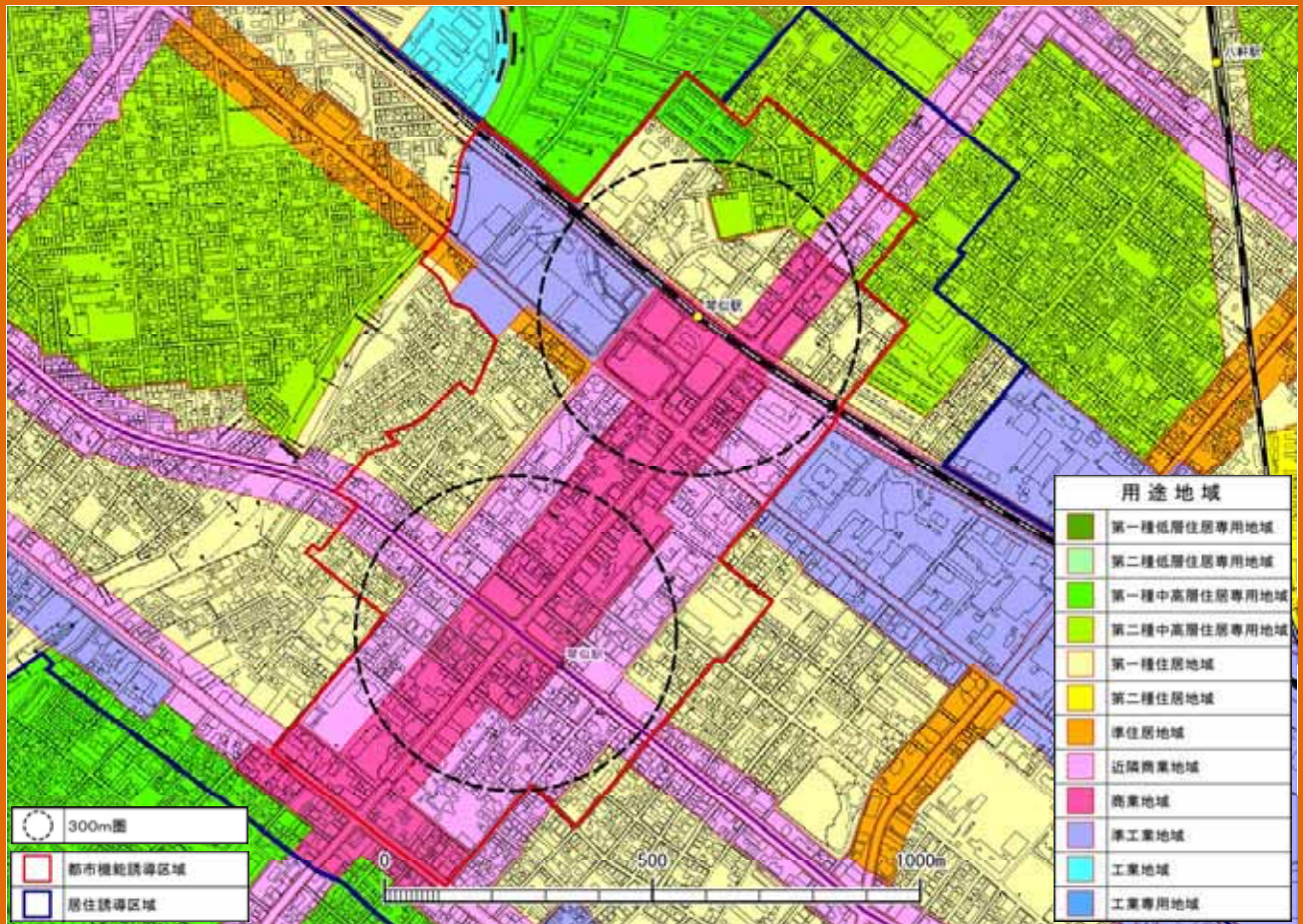
1 用途地域



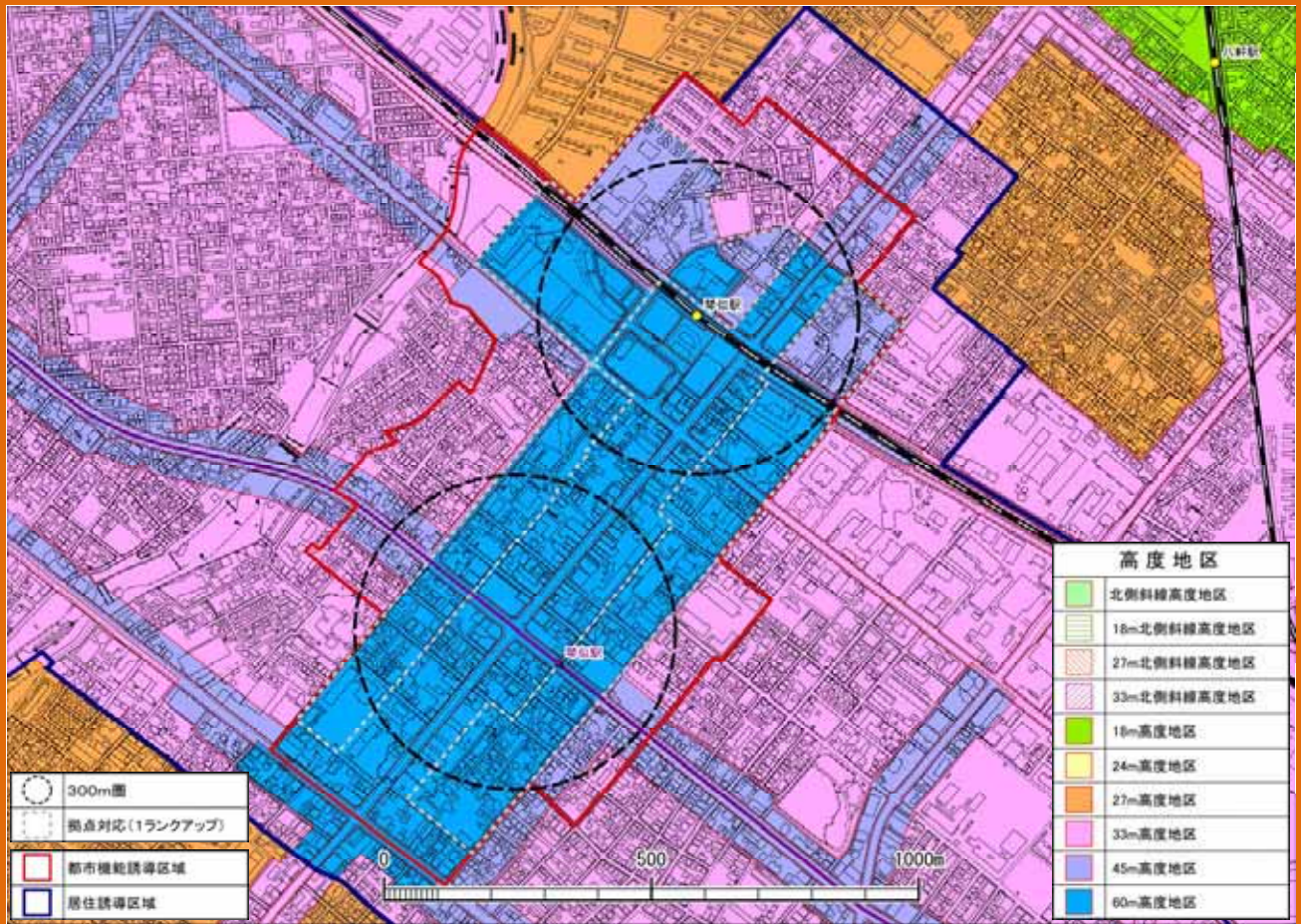
2 高度地区



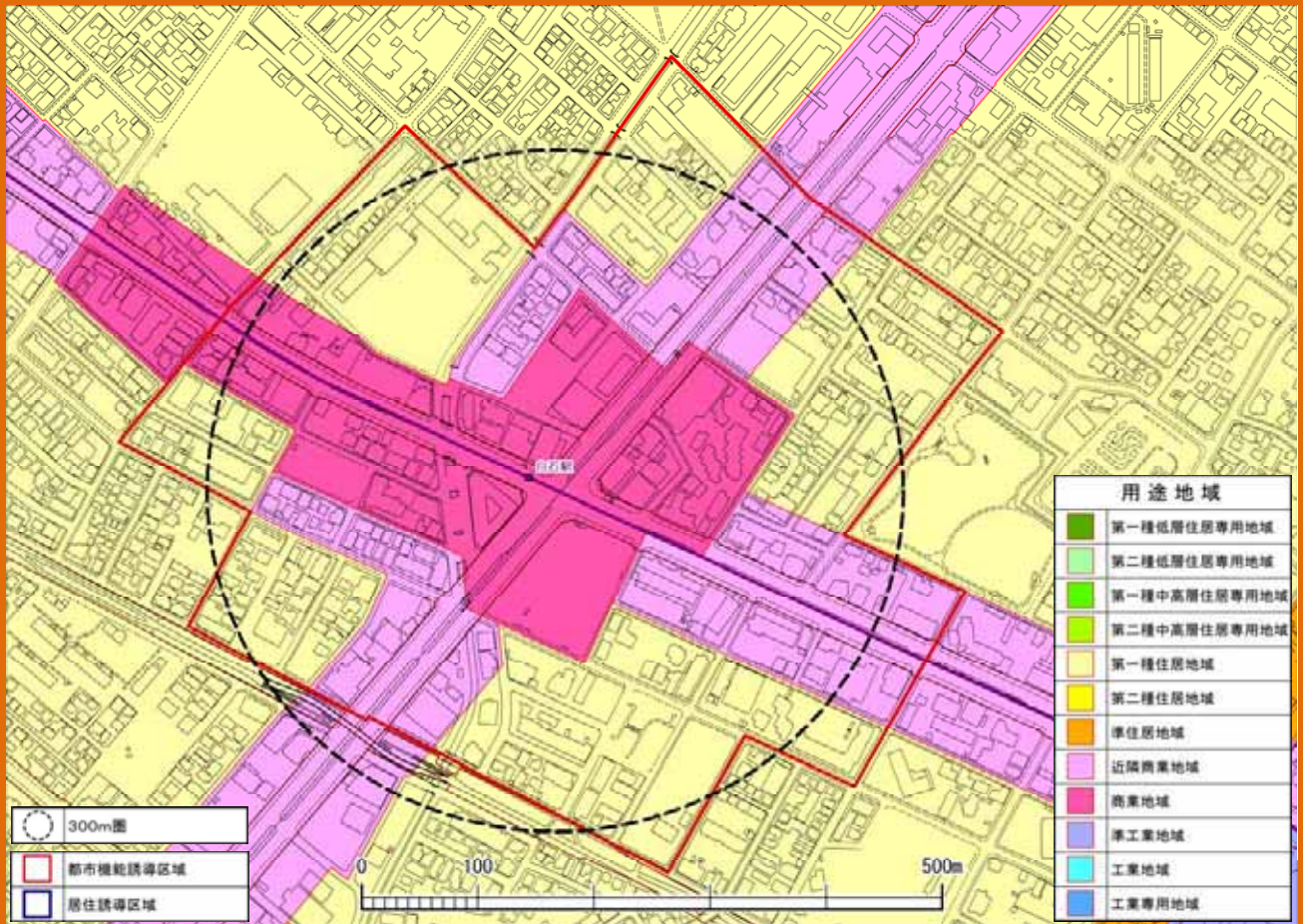
1 用途地域



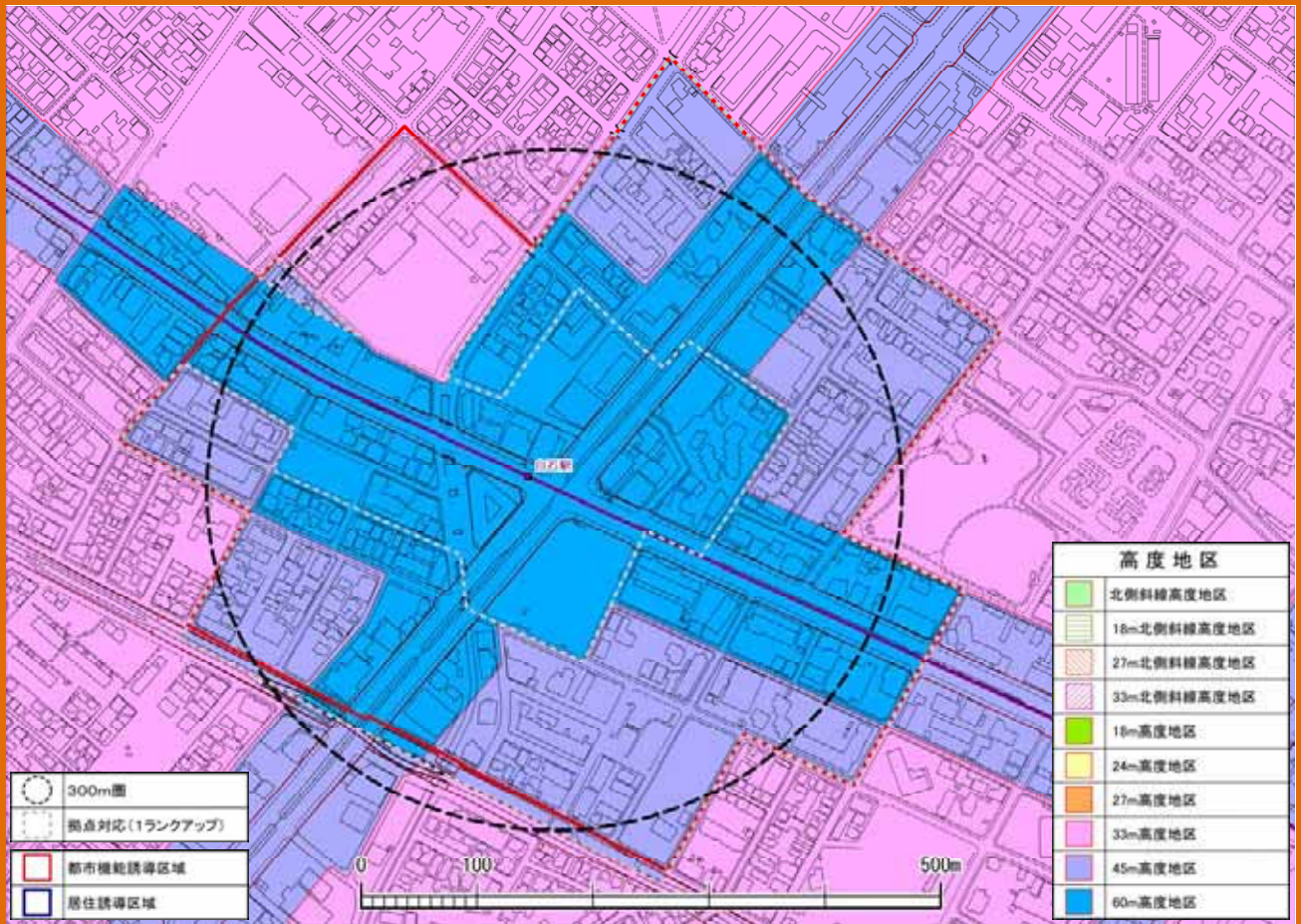
2 高度地区



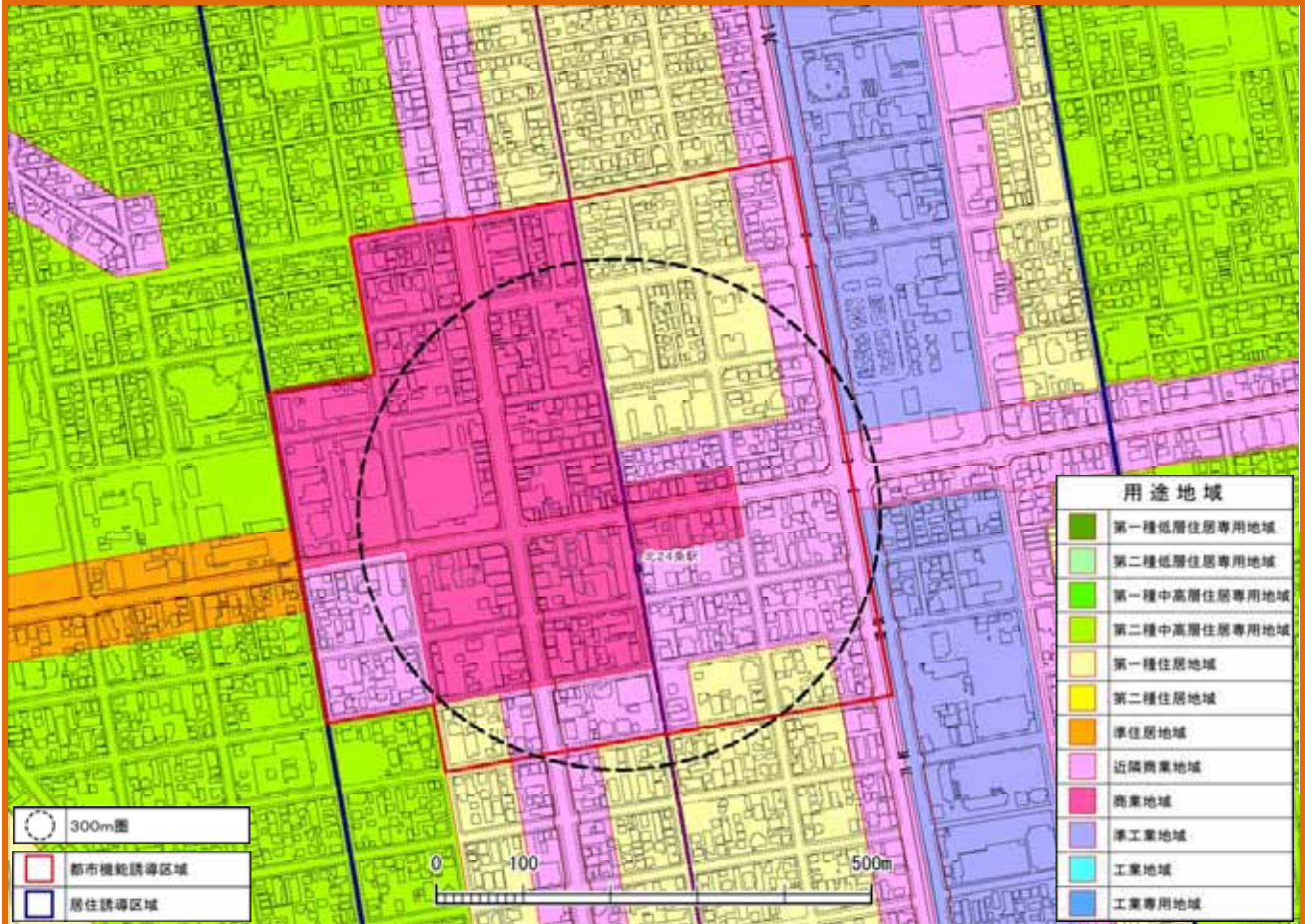
1 用途地域



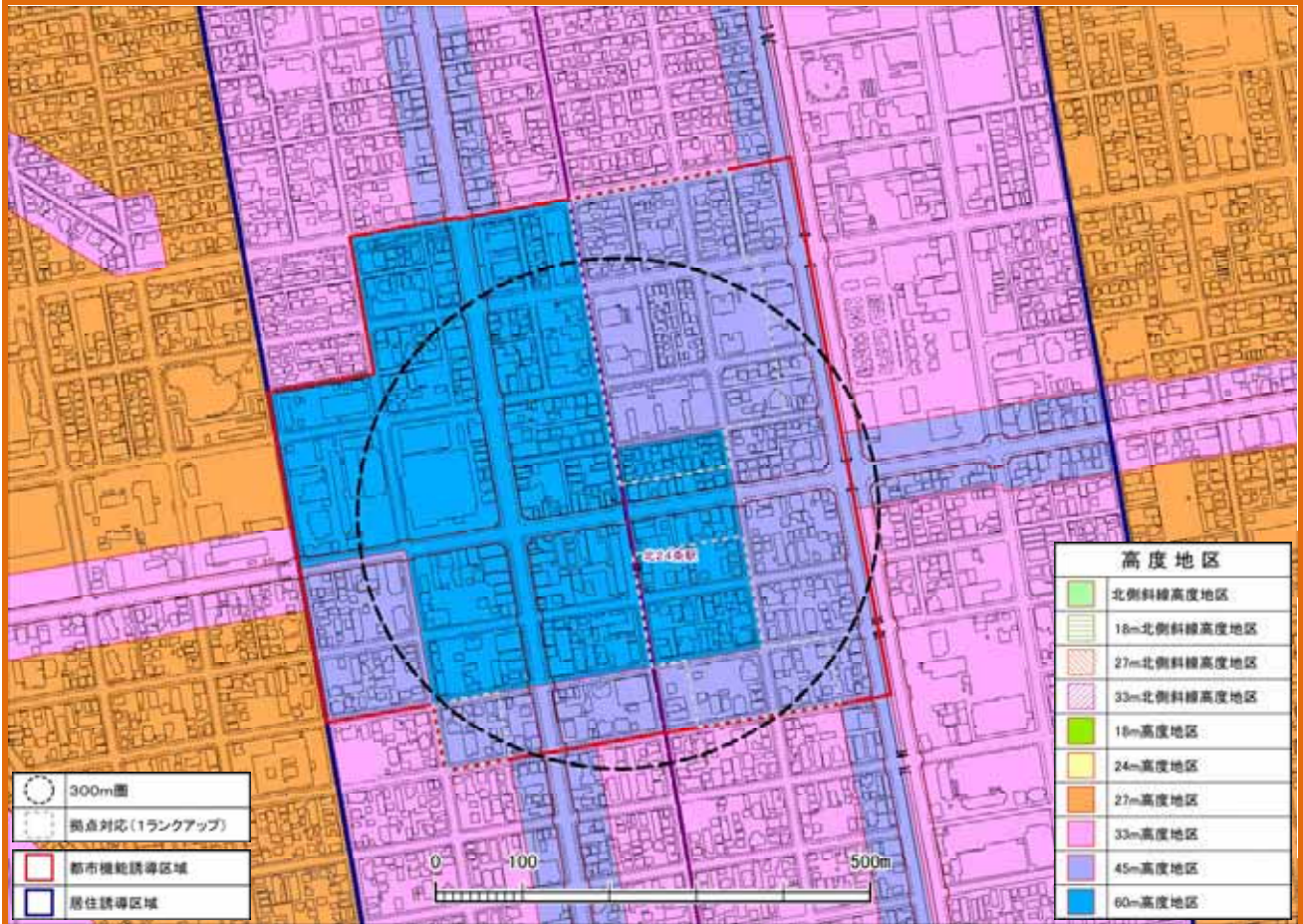
2 高度地区



1 用途地域

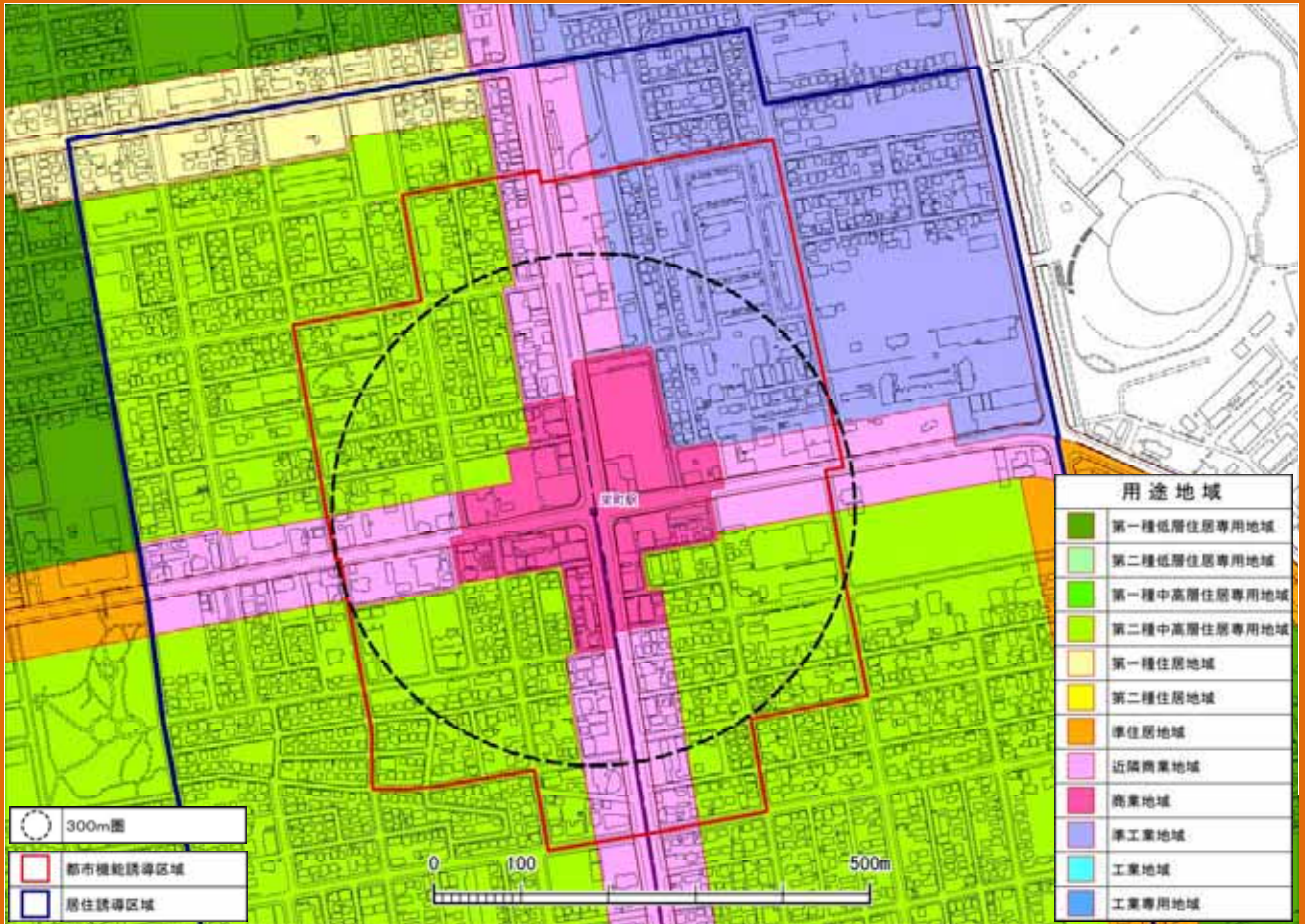


2 高度地区

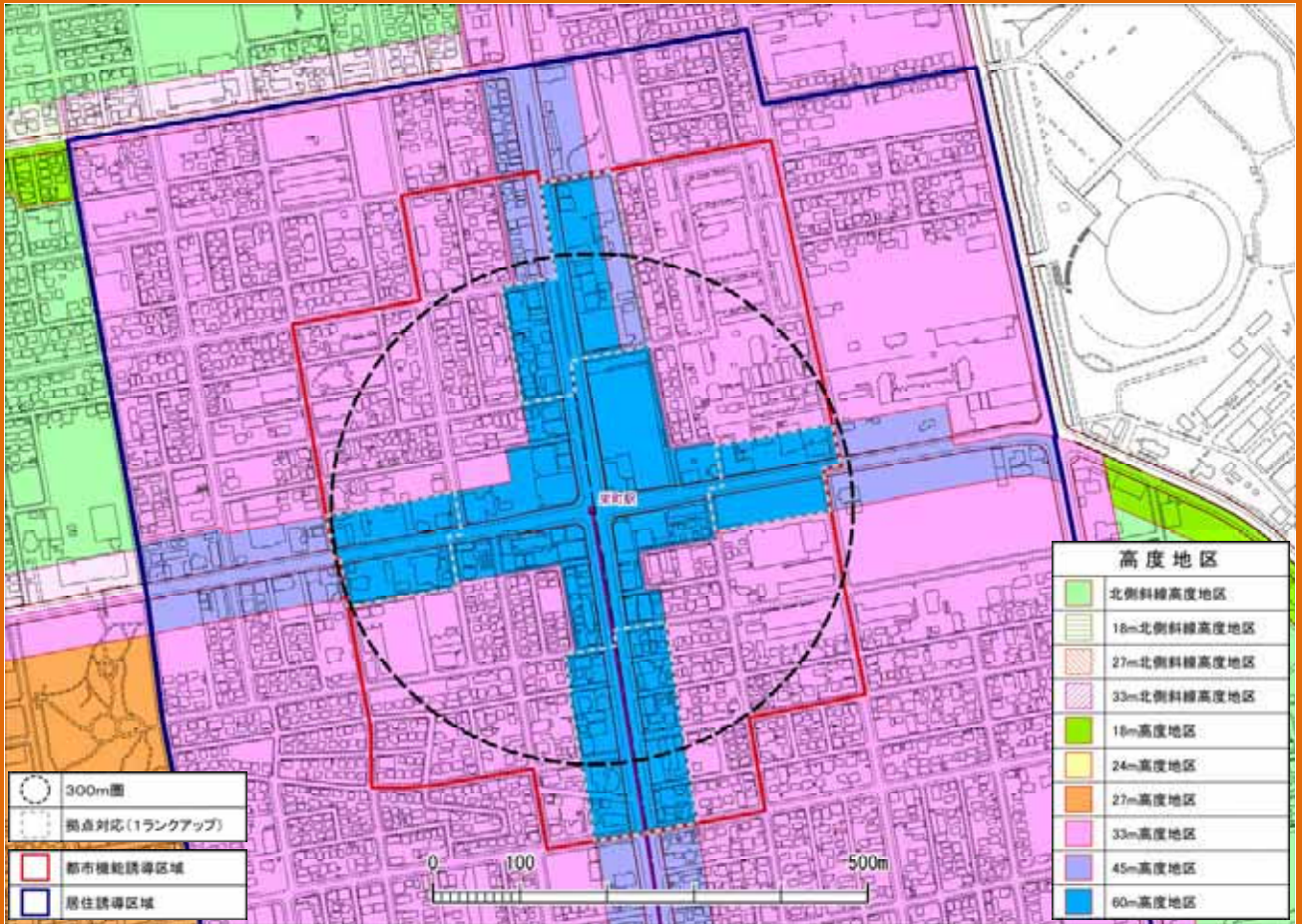




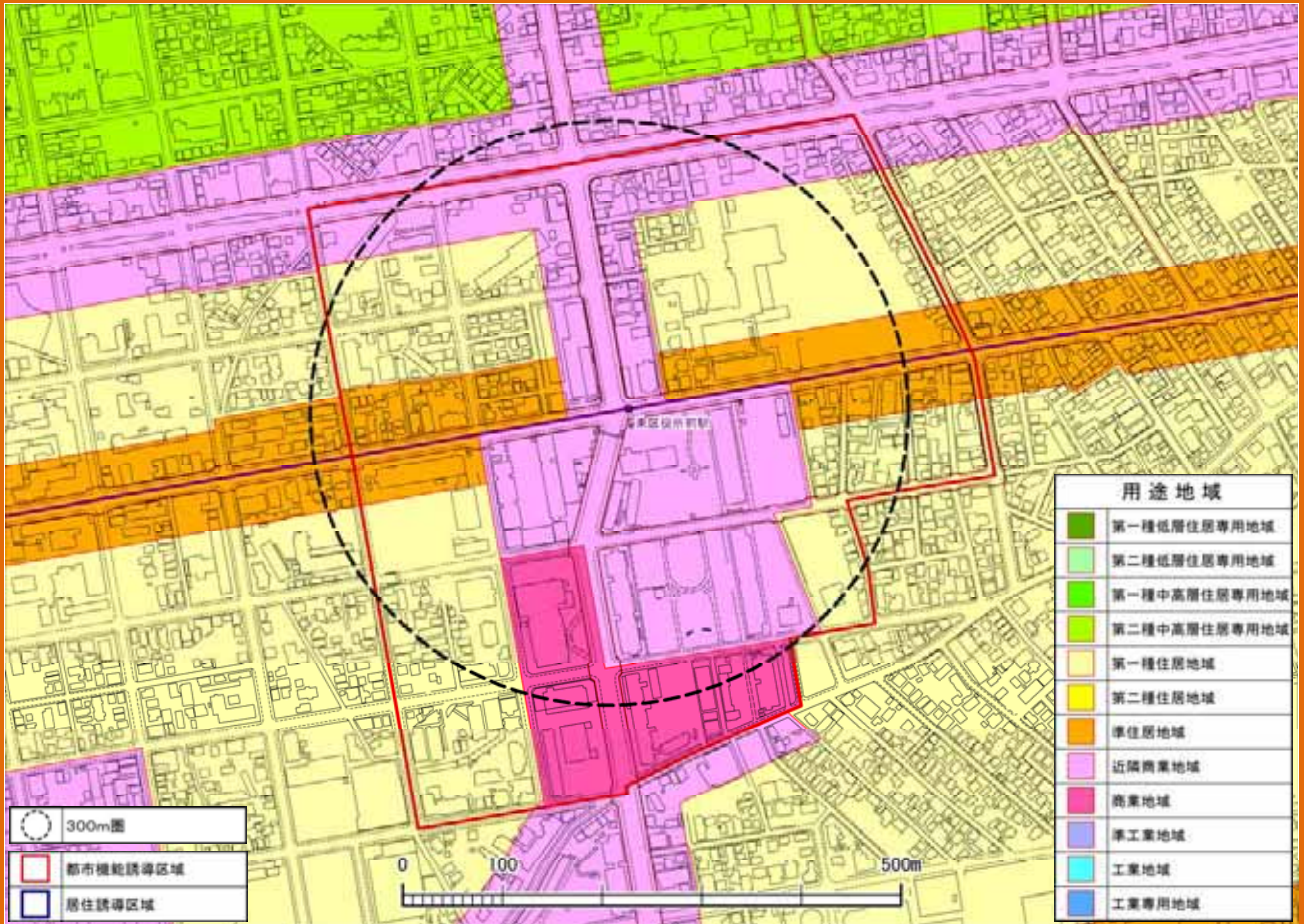
1 用途地域



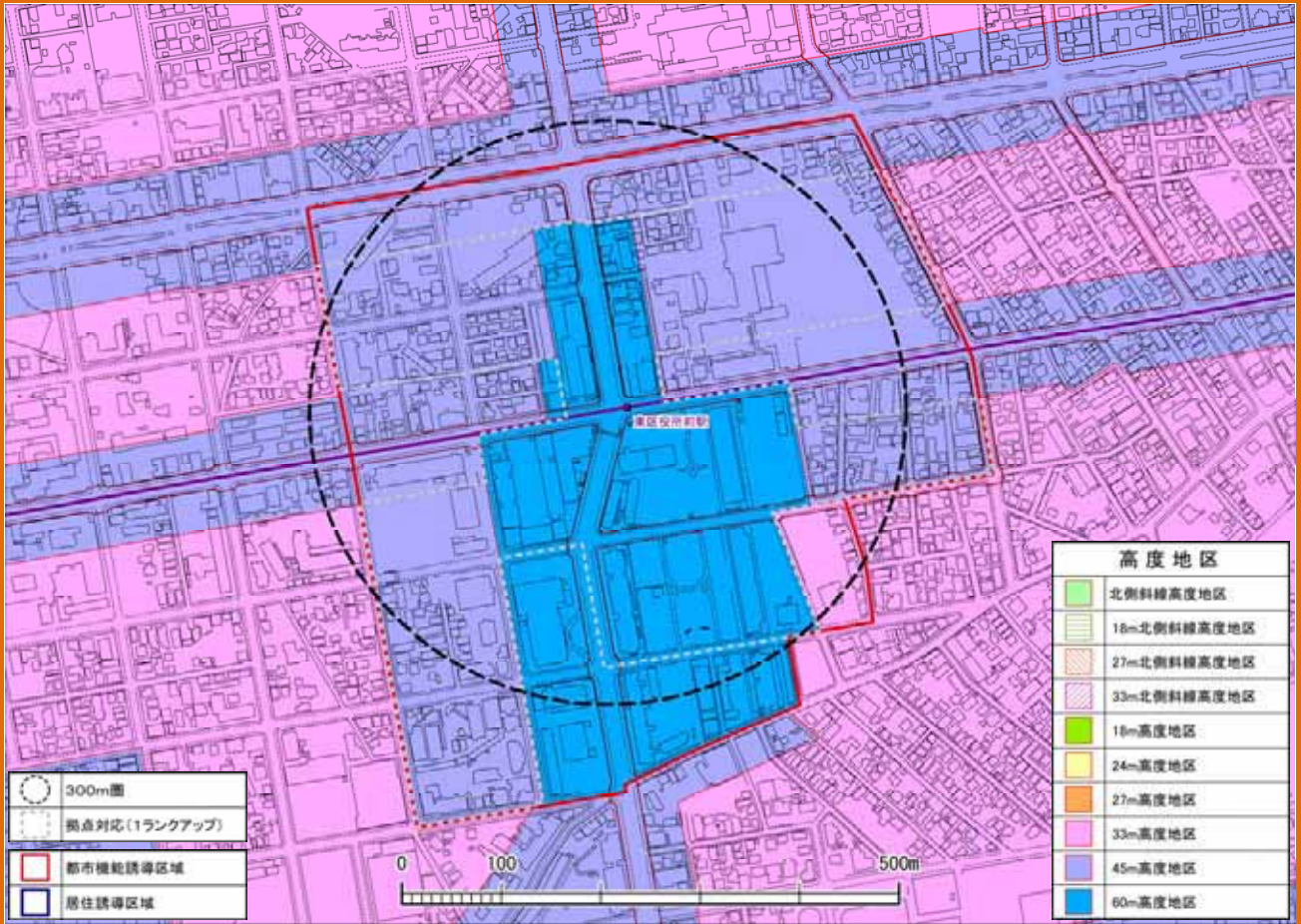
2 高度地区



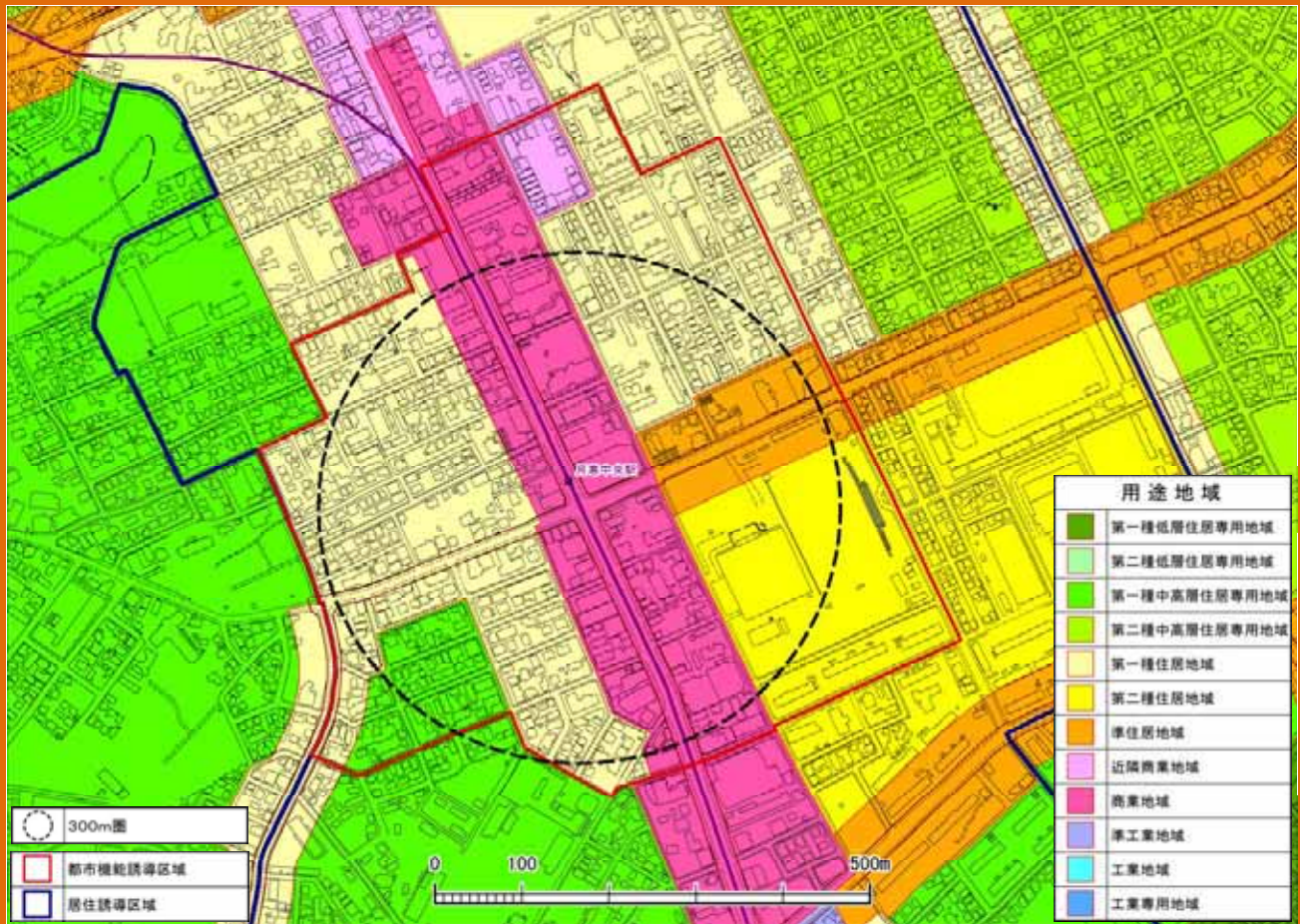
1 用途地域



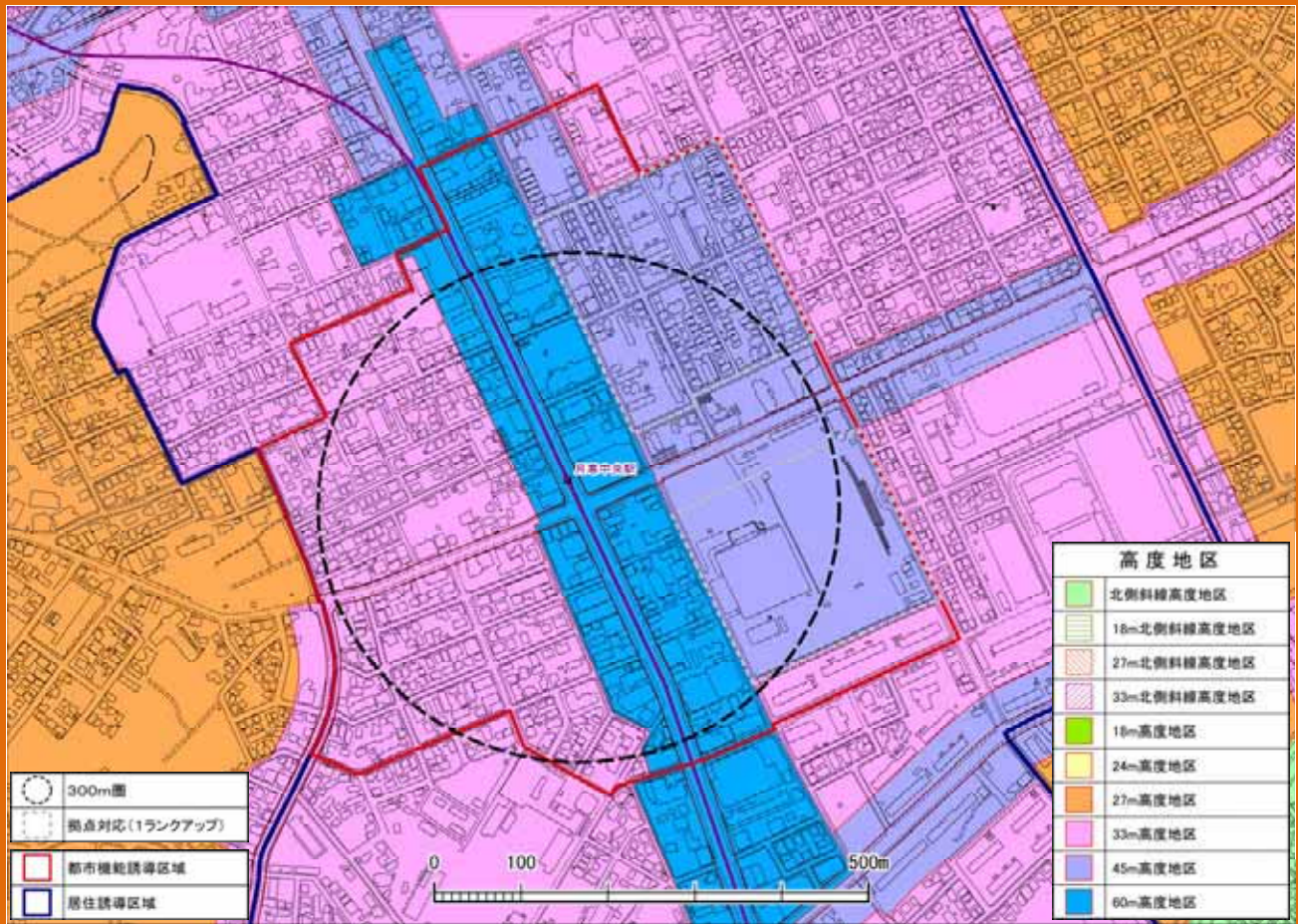
2 高度地区



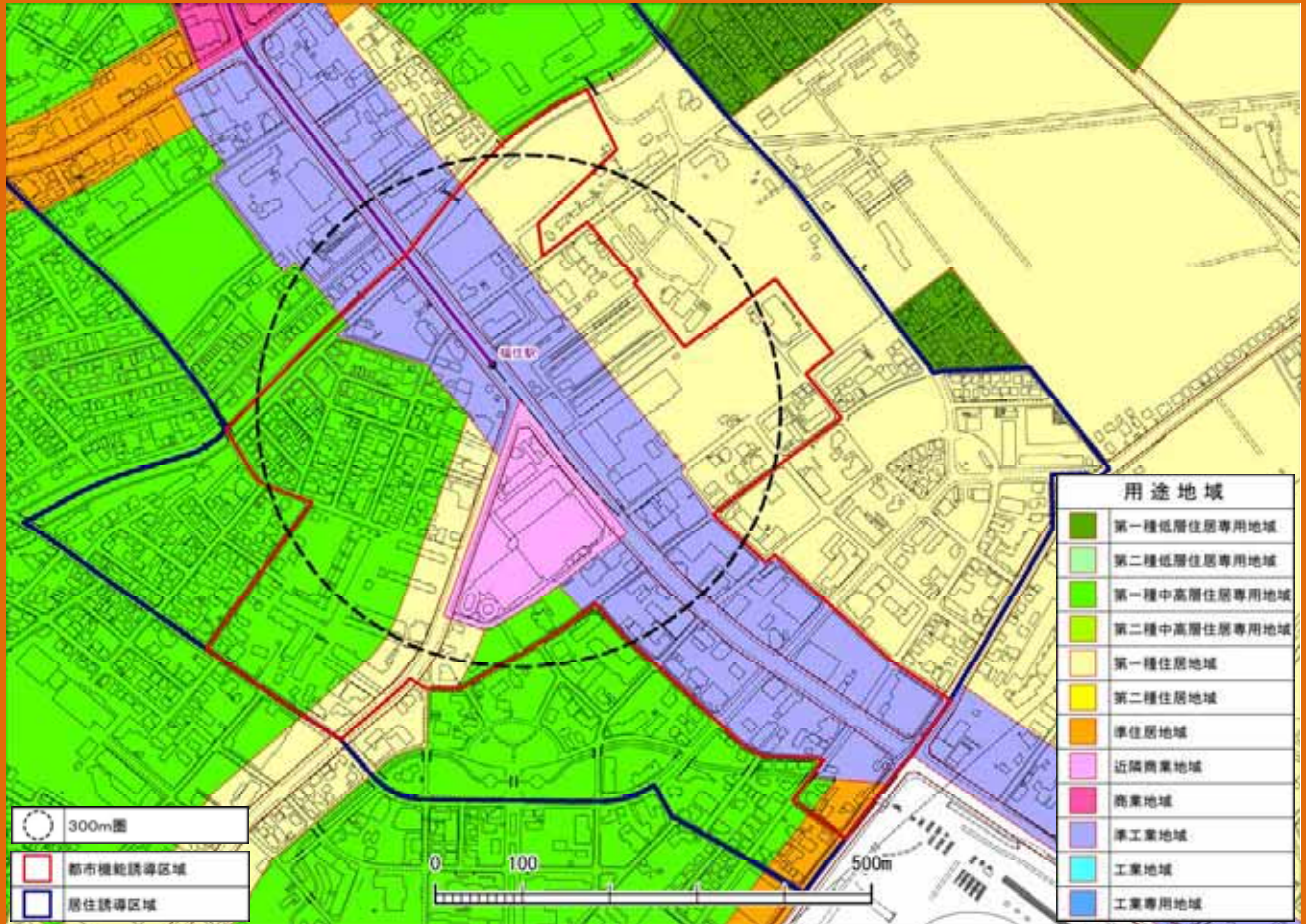
1 用途地域



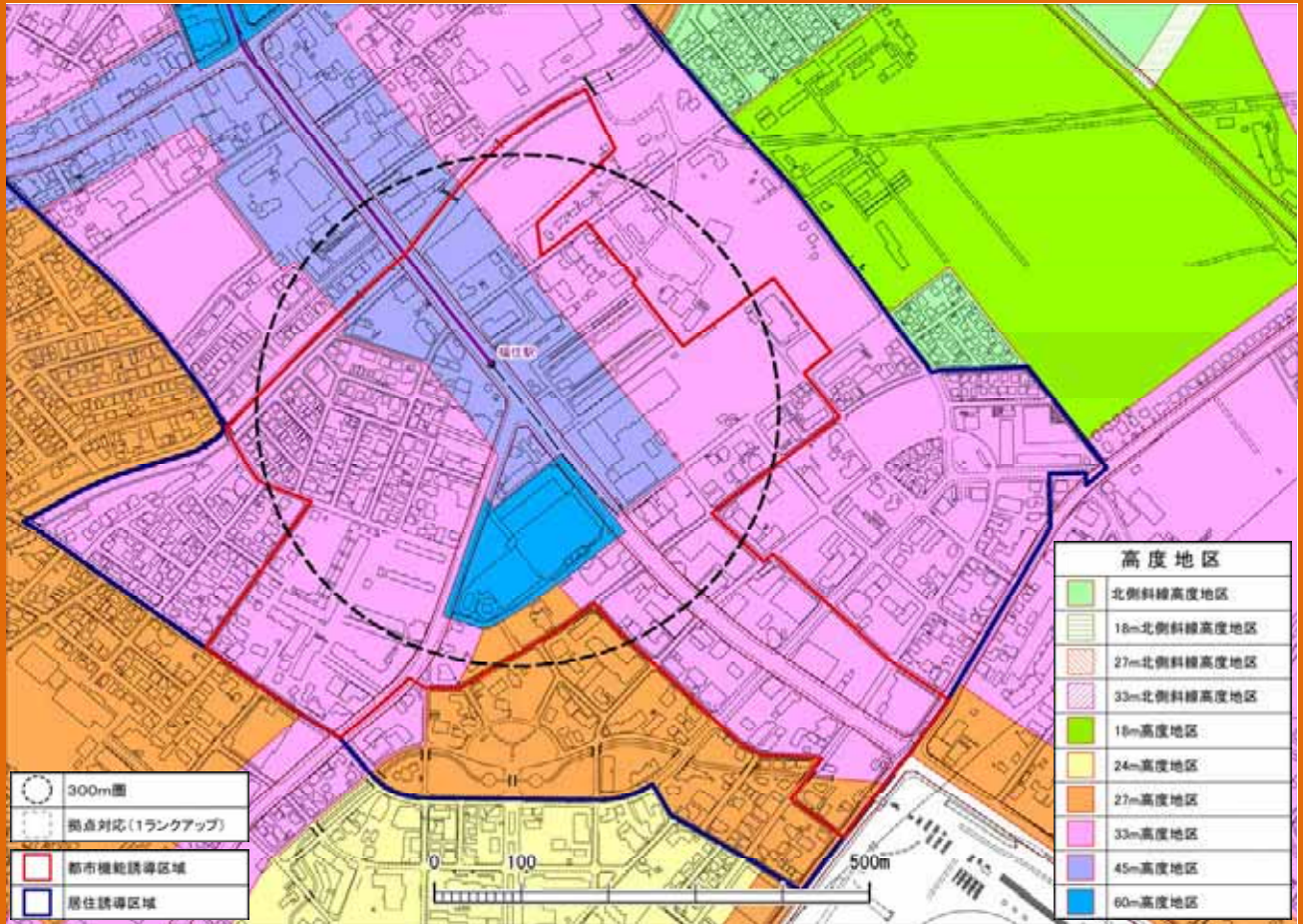
2 高度地区



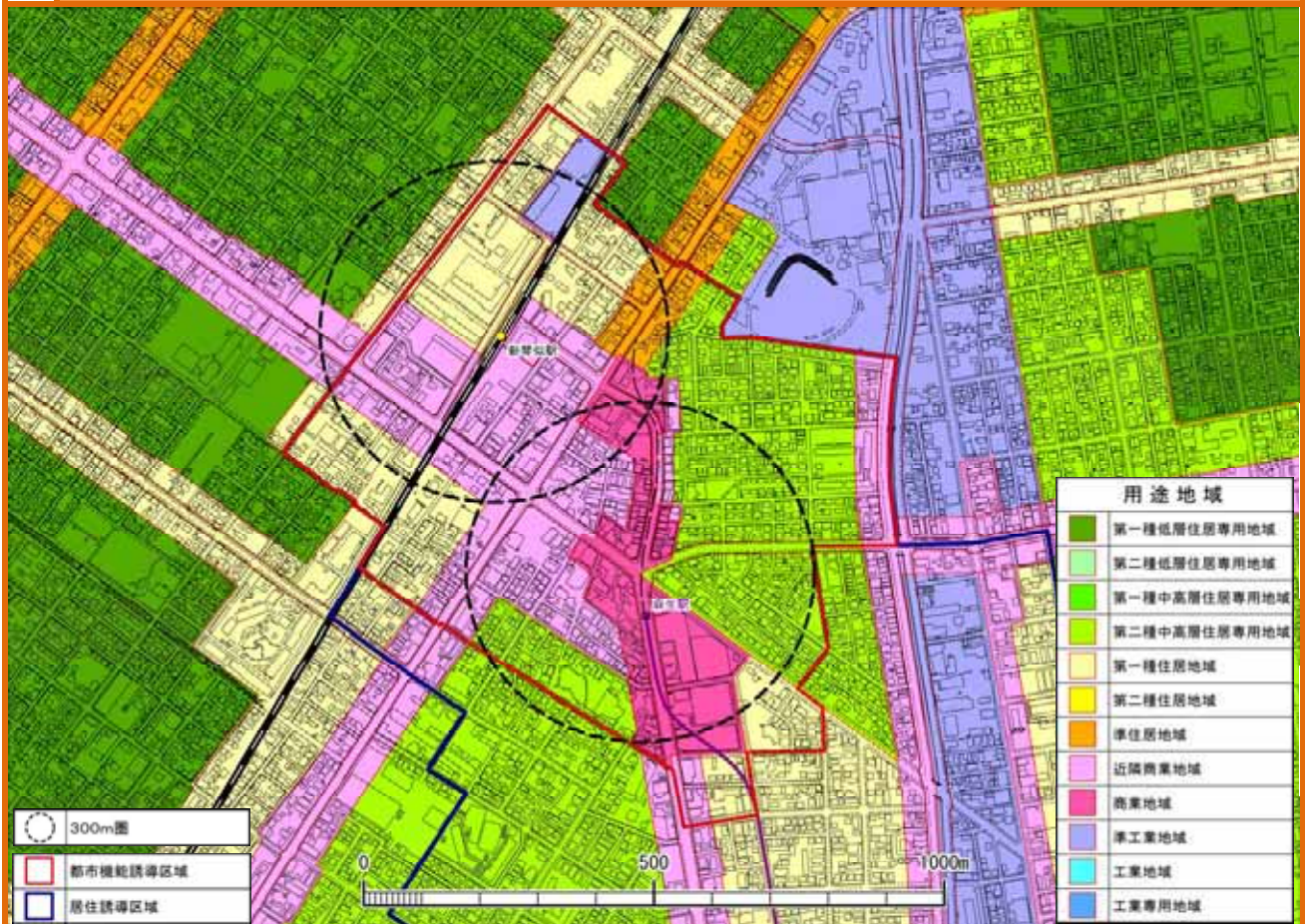
1 用途地域



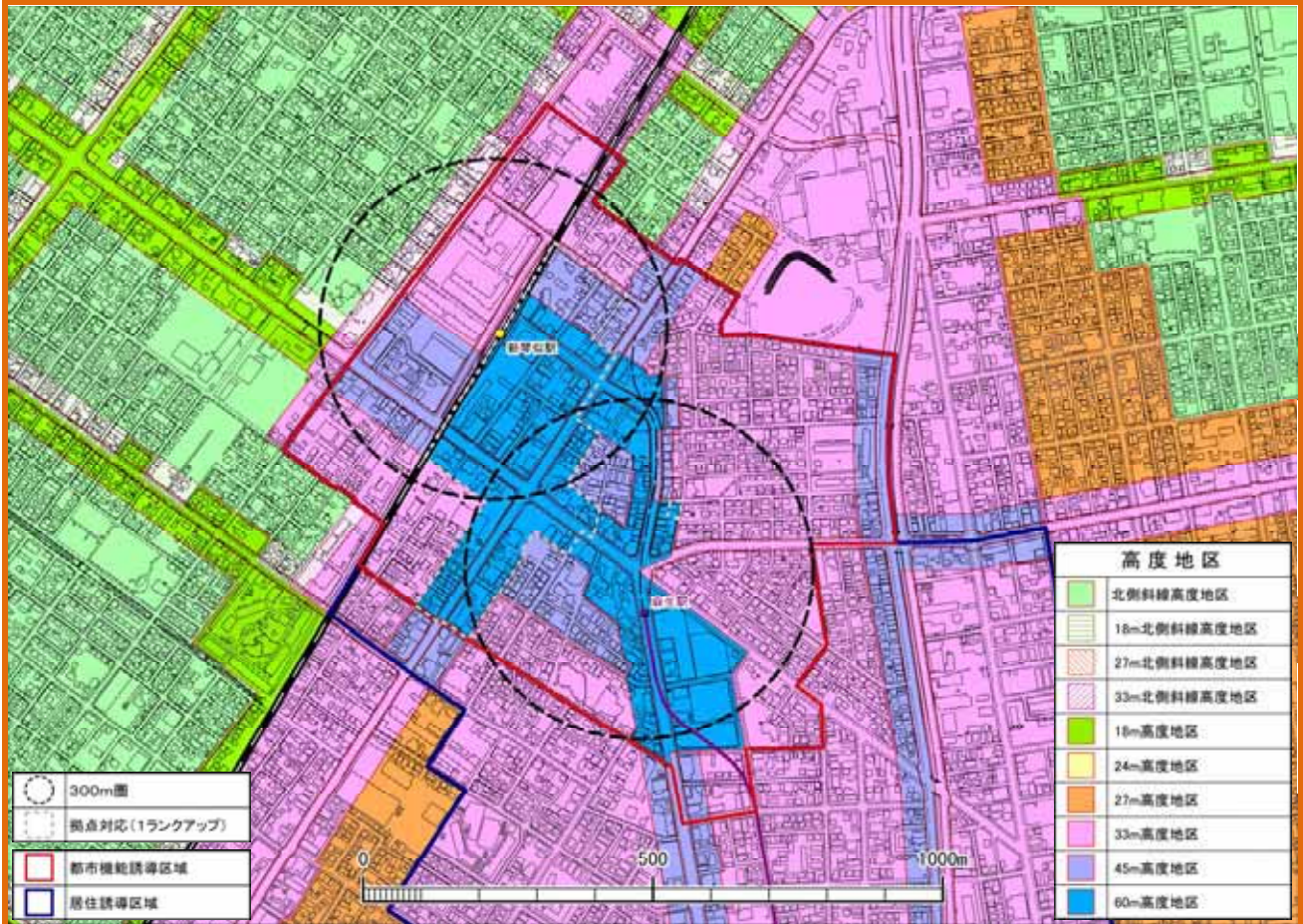
2 高度地区



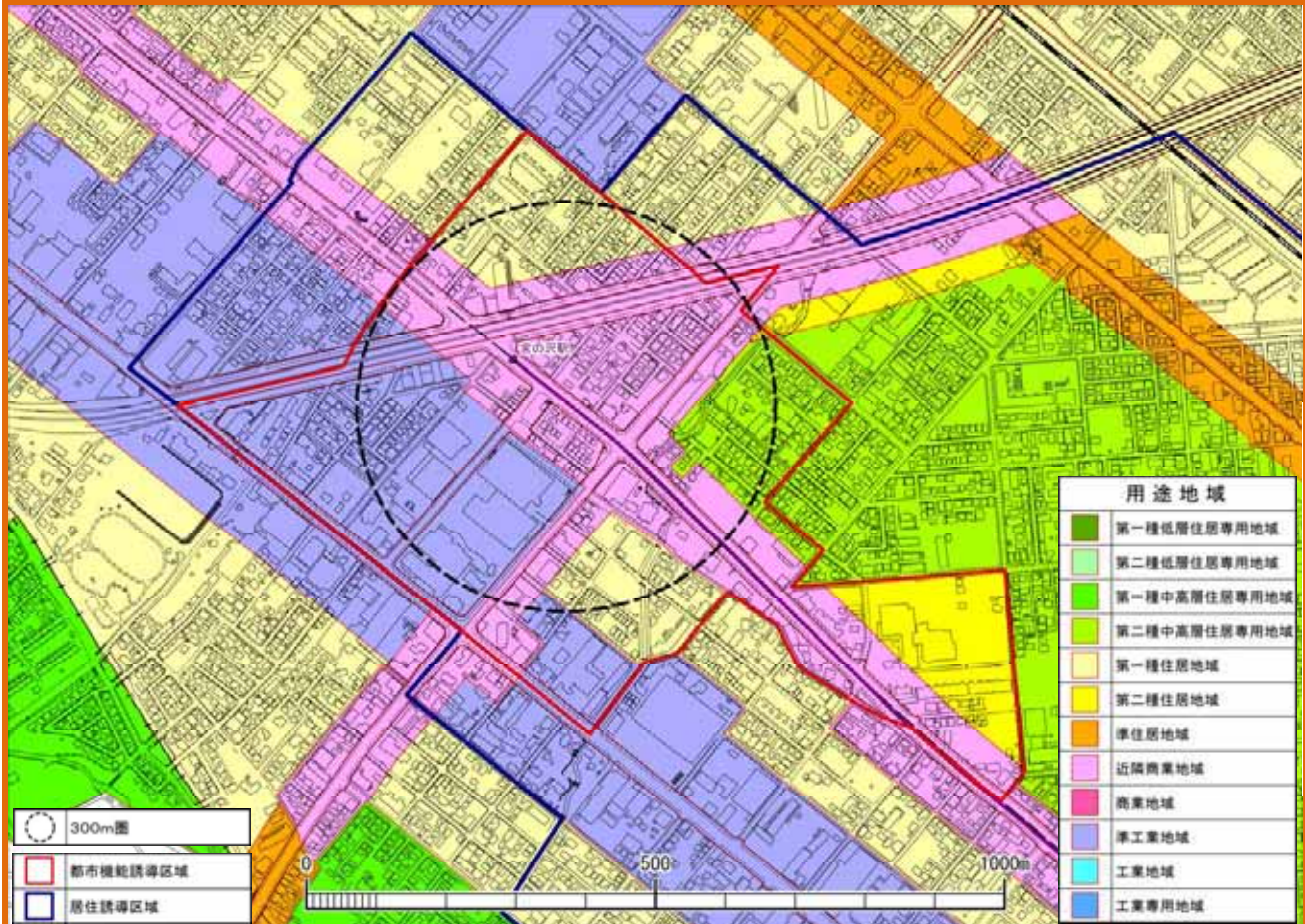
1 用途地域



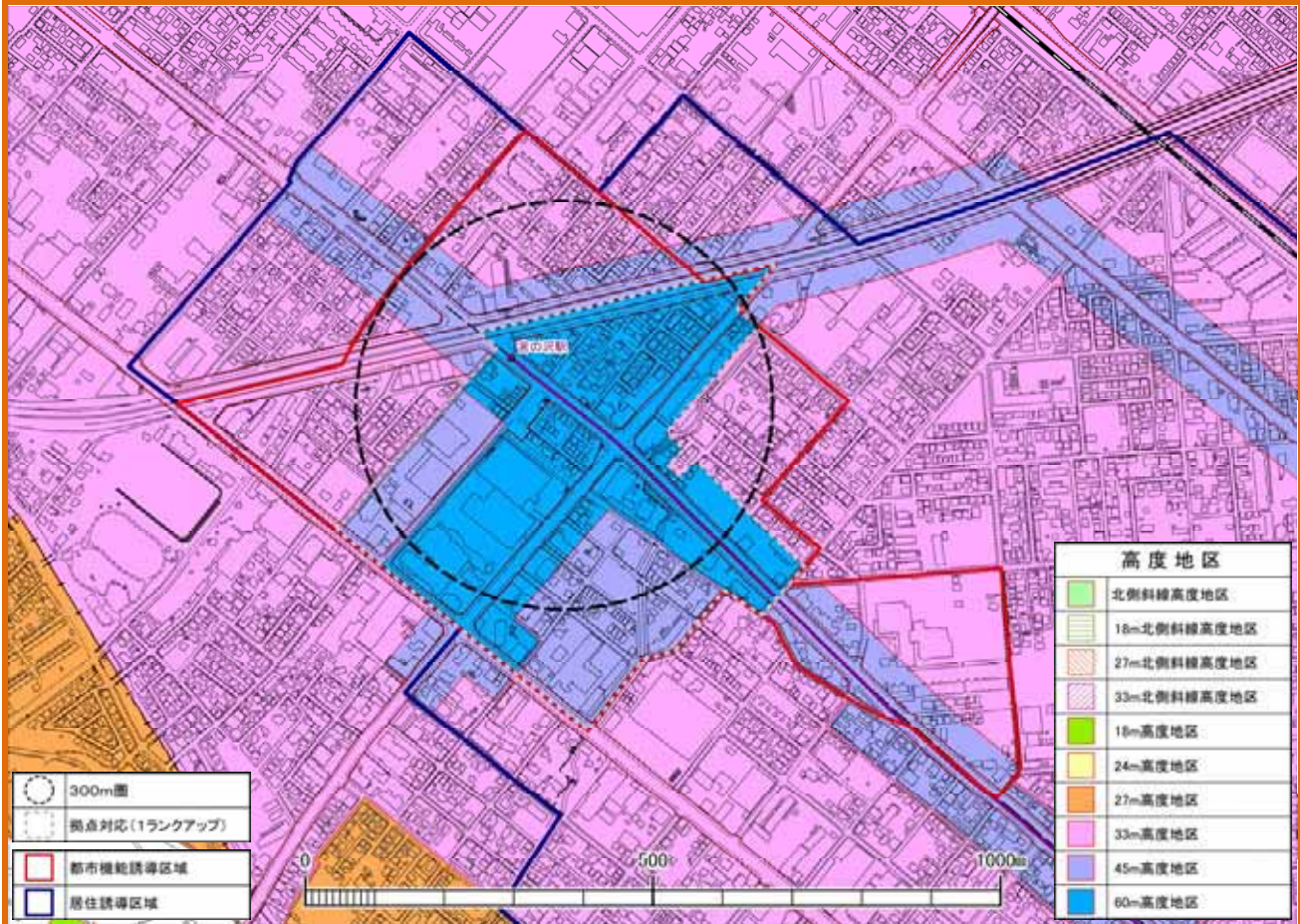
2 高度地区



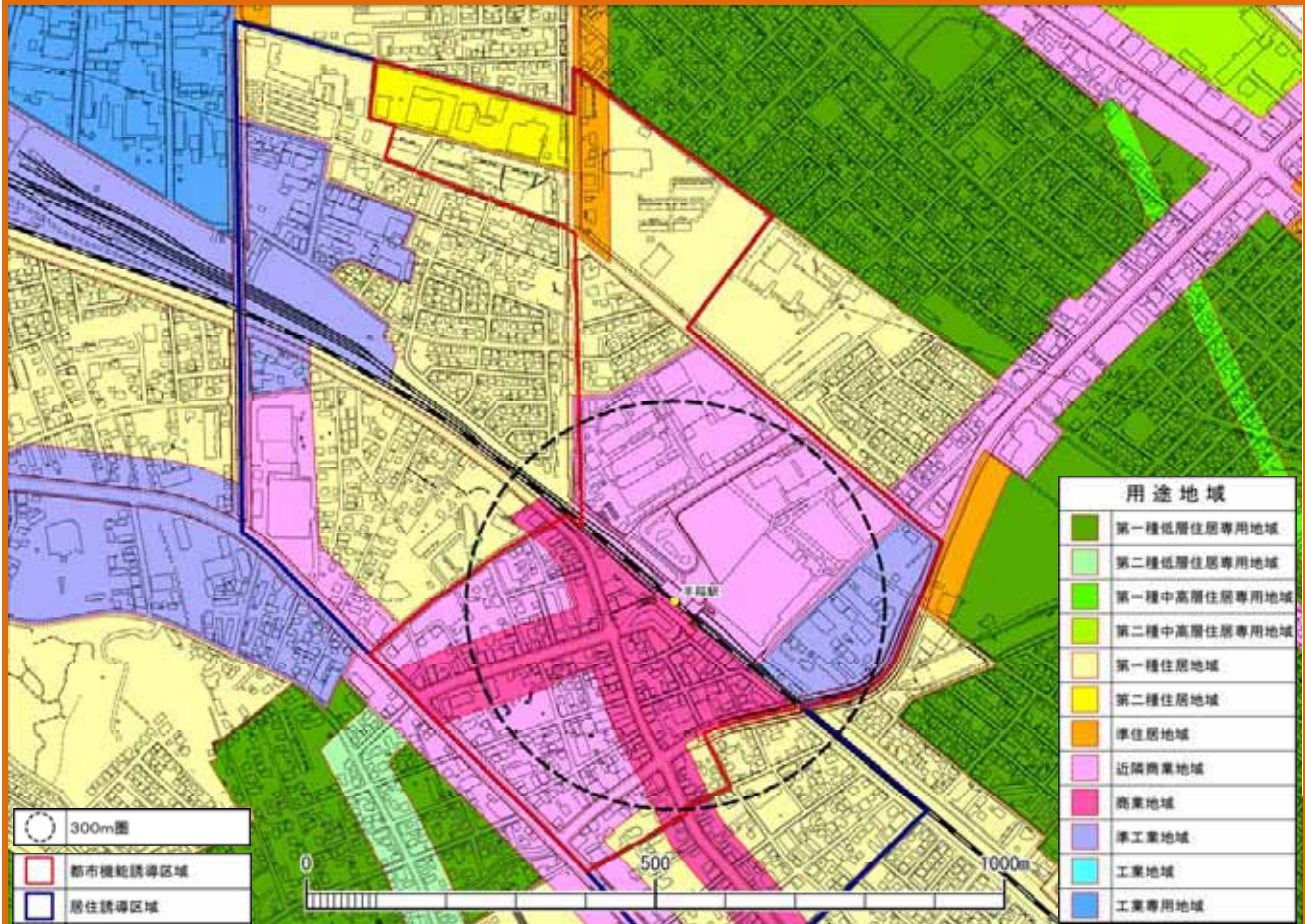
1 用途地域



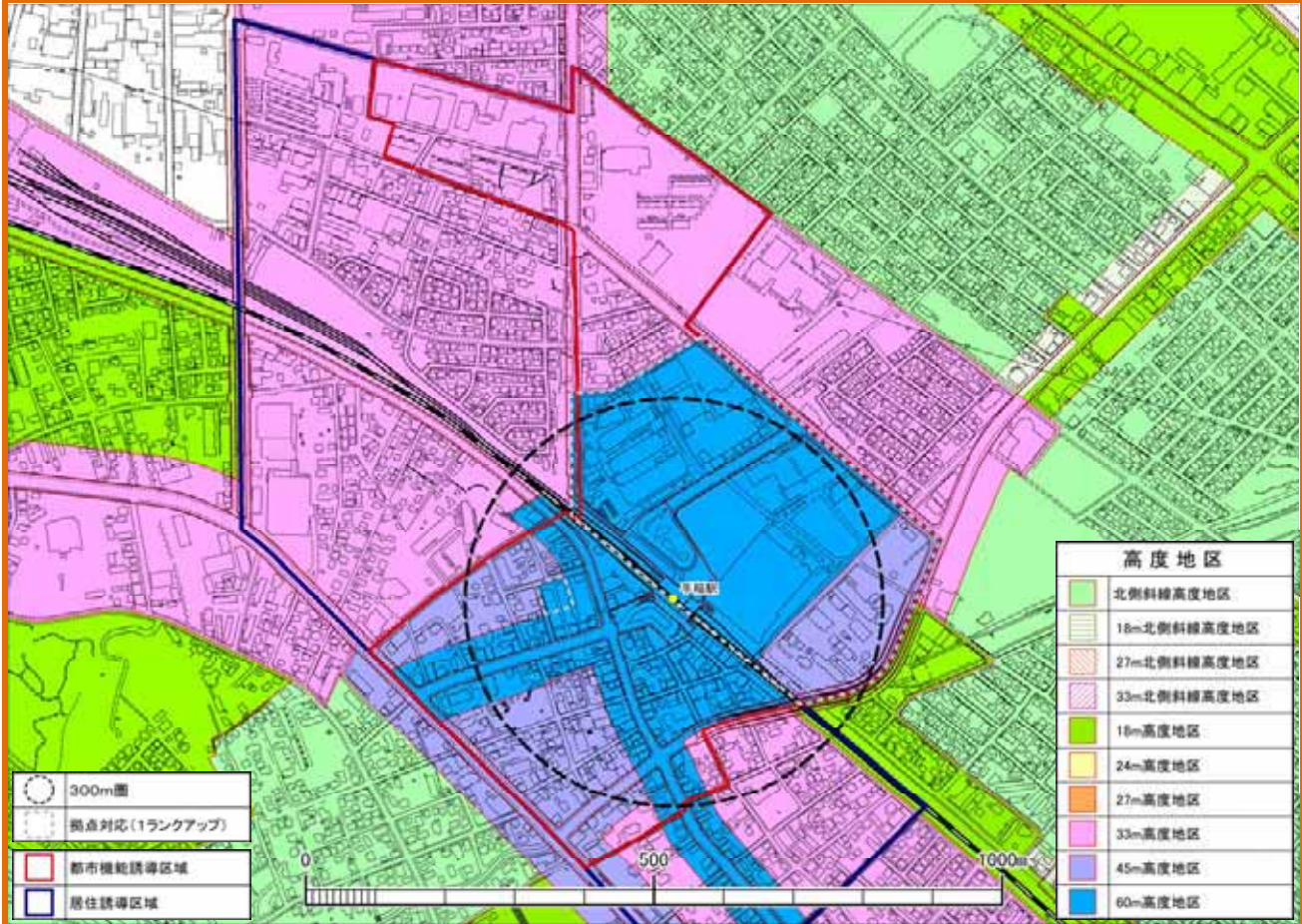
2 高度地区



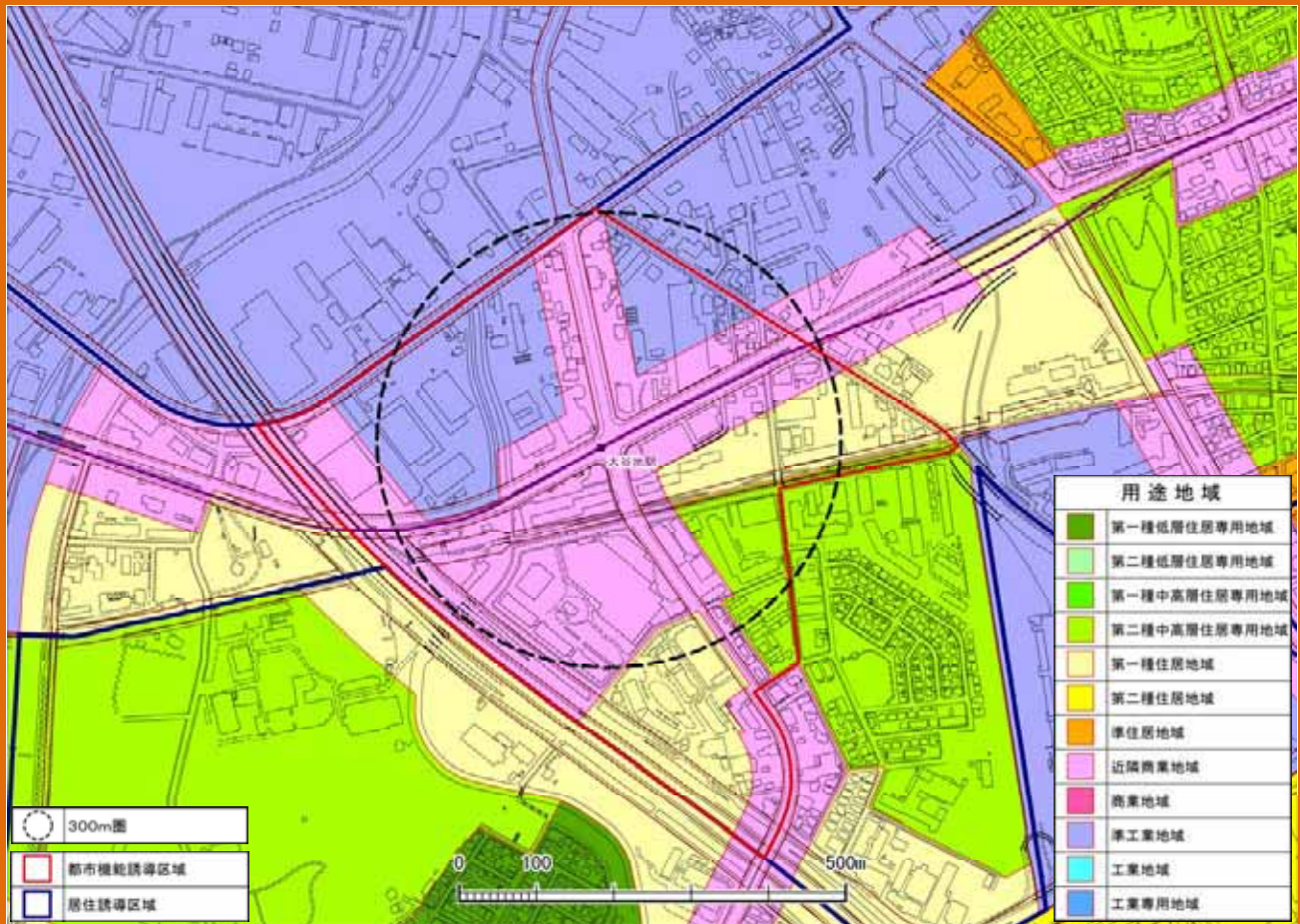
1 用途地域



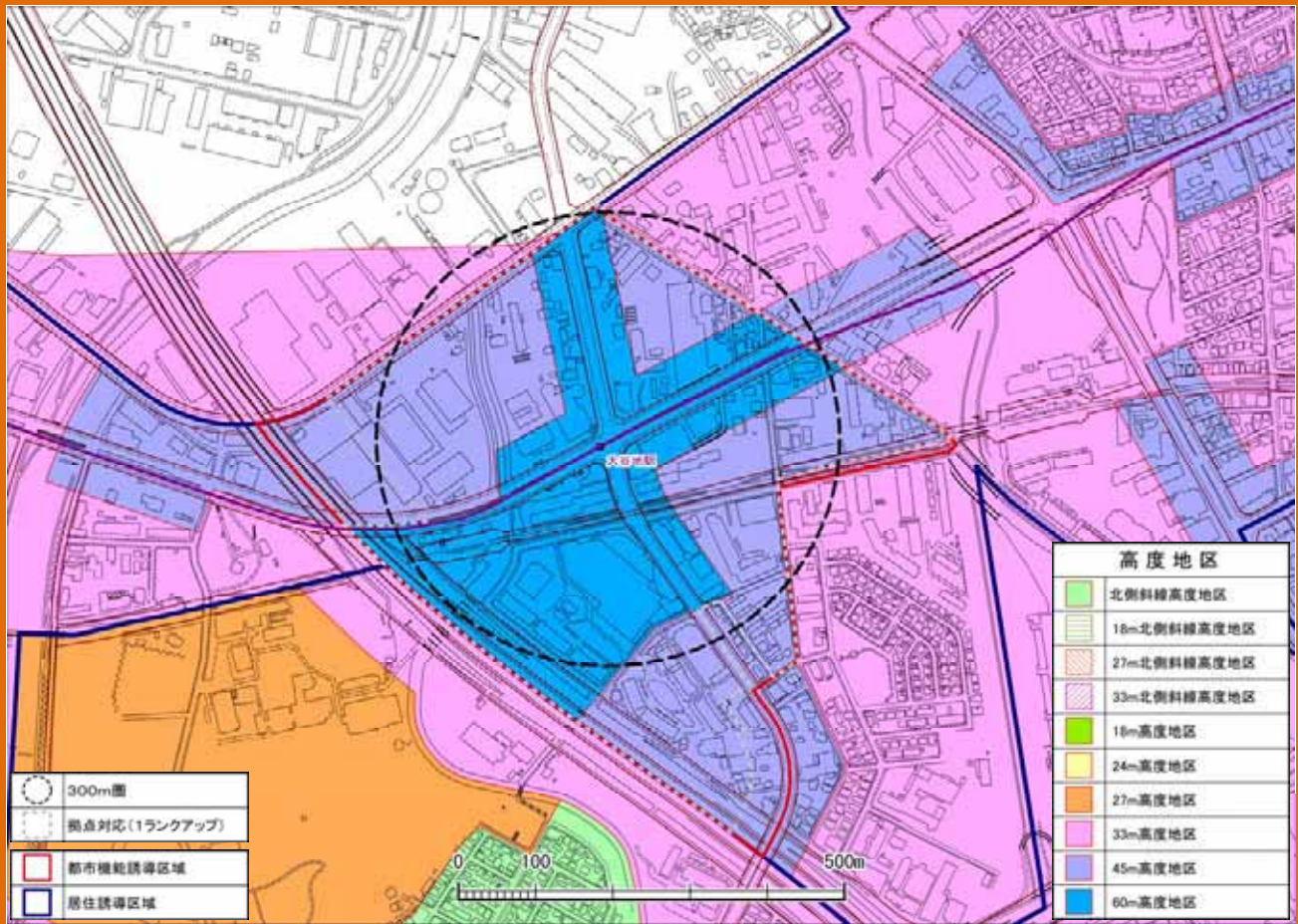
2 高度地区



1 用途地域

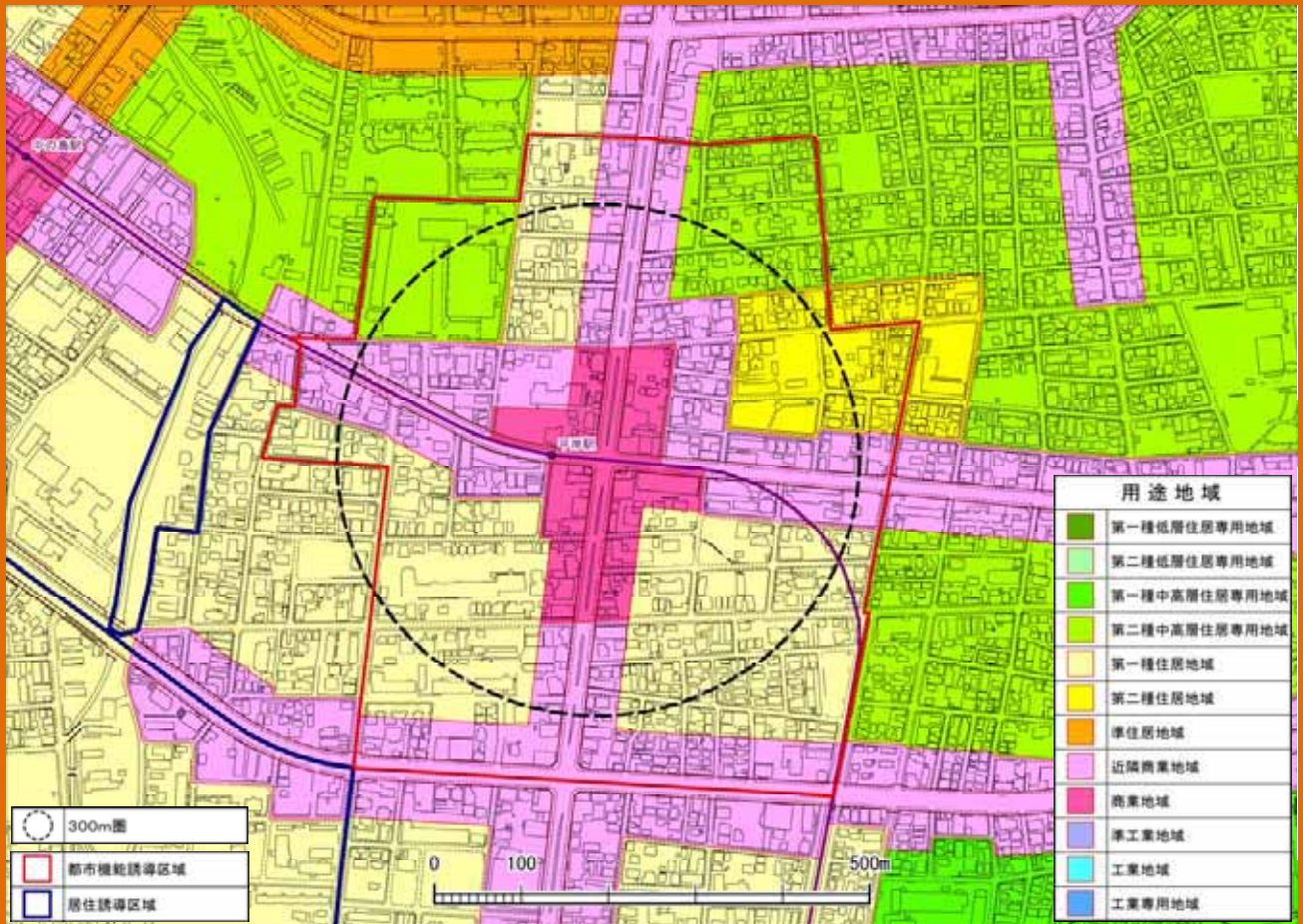


2 高度地区

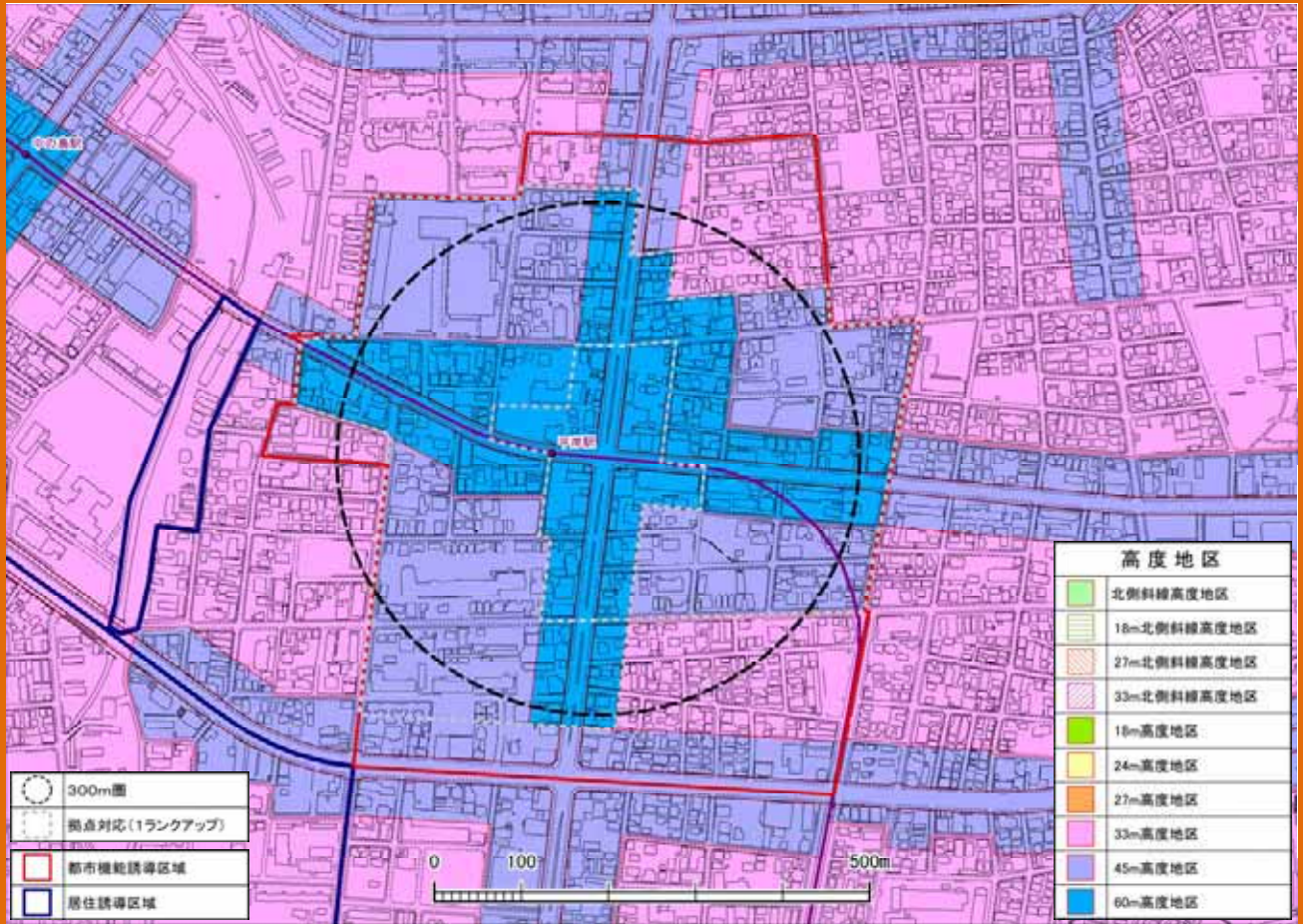




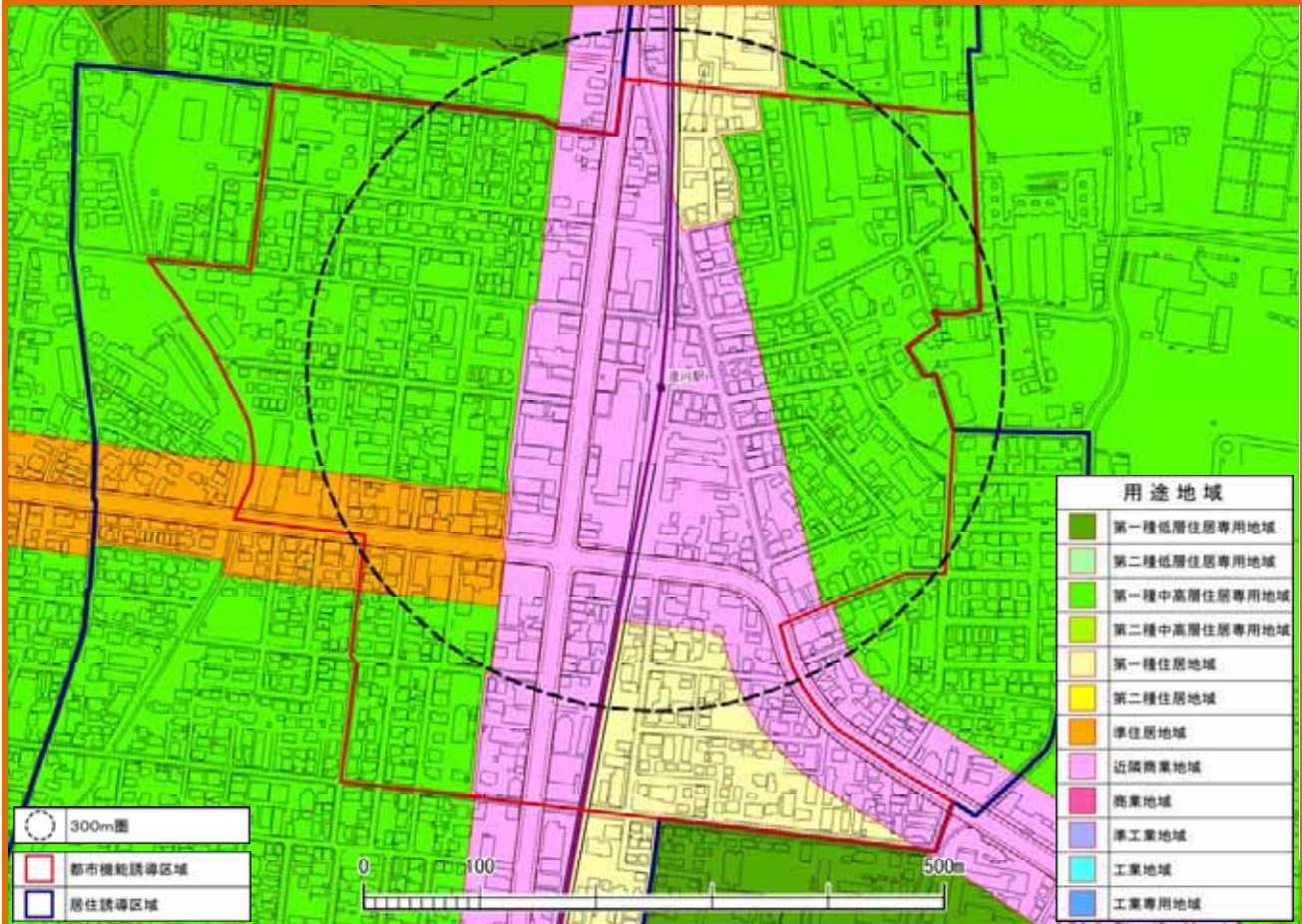
1 用途地域



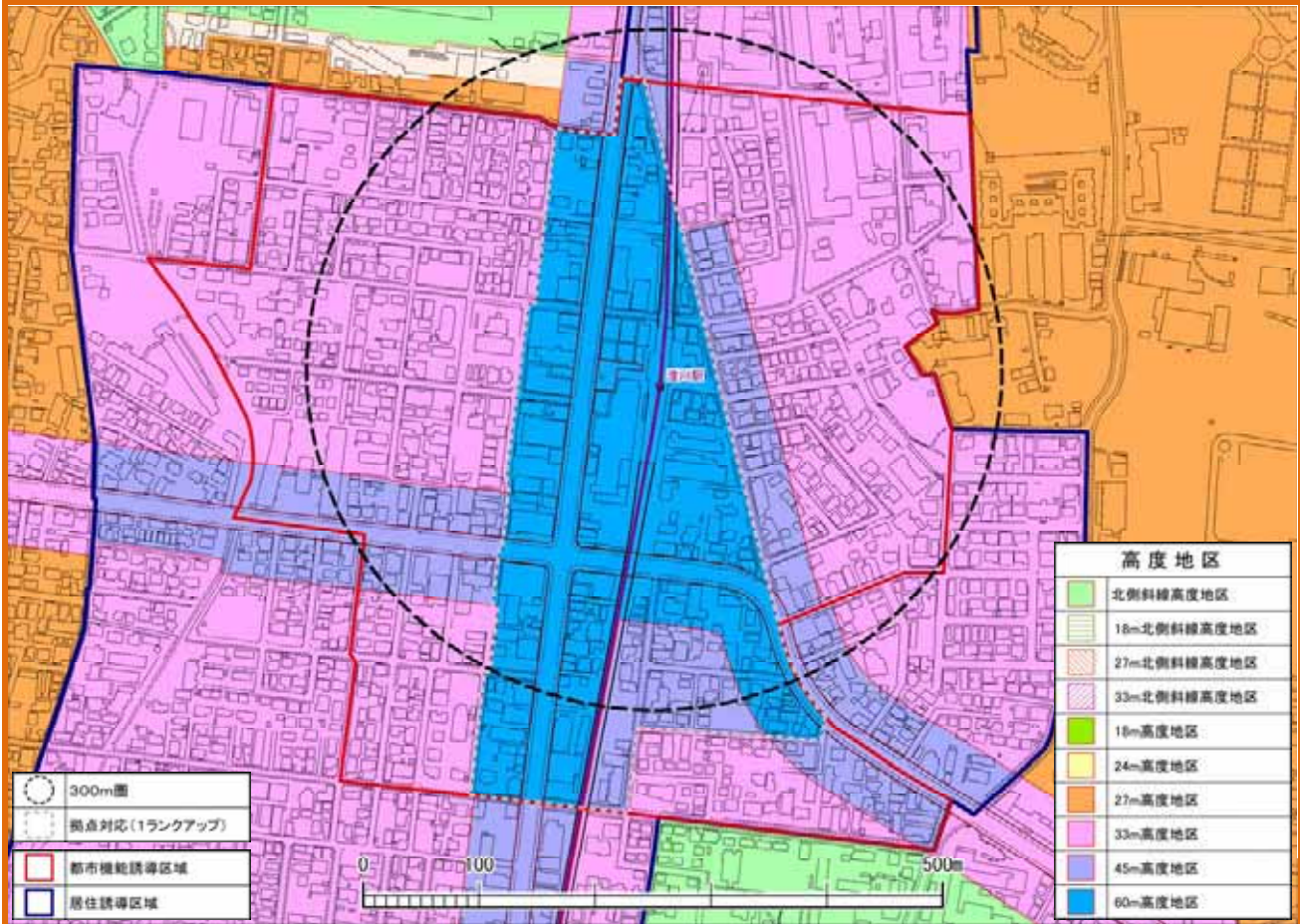
2 高度地区



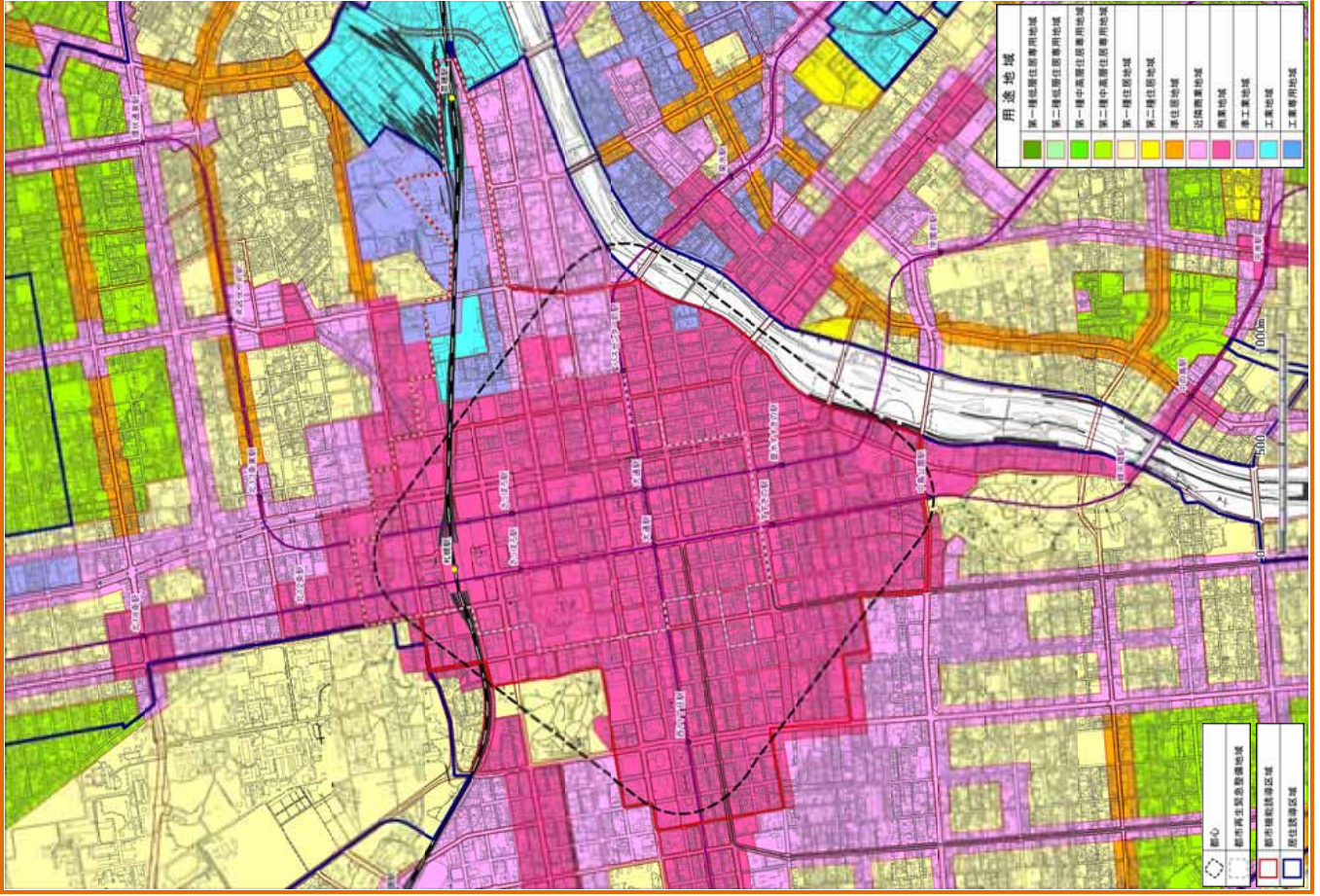
1 用途地域



2 高度地区



1 用途地域



2 高度地区

